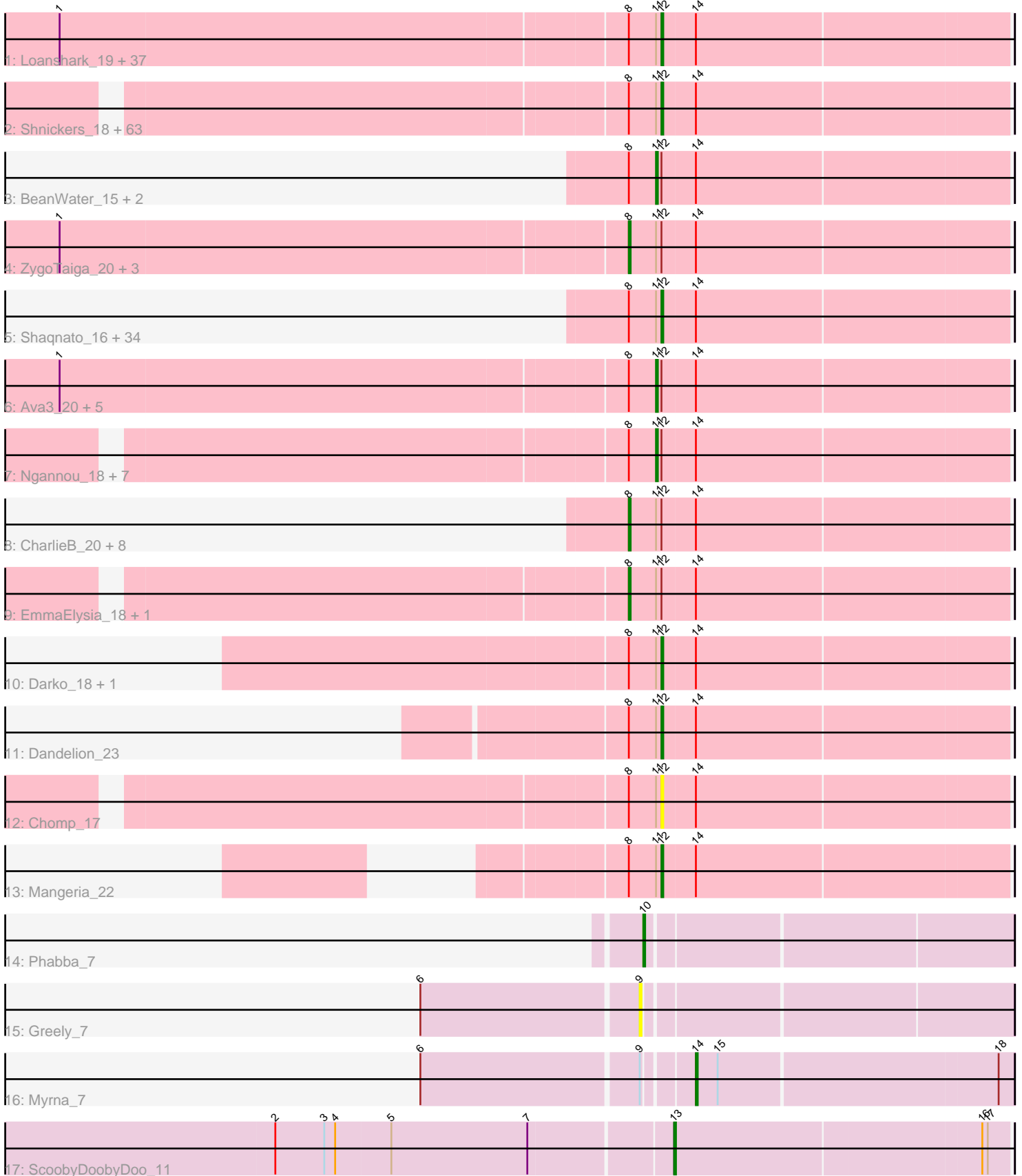


Pham 591



Note: Tracks are now grouped by subcluster and scaled. Switching in subcluster is indicated by changes in track color. Track scale is now set by default to display the region 30 bp upstream of start 1 to 30 bp downstream of the last possible start. If this default region is judged to be packed too tightly with annotated starts, the track will be further scaled to only show that region of the ORF with annotated starts. This action will be indicated by adding "Zoomed" to the title. For starts, yellow indicates the location of called starts comprised solely of Glimmer/GeneMark auto-annotations, green indicates the location of called starts with at least 1 manual gene annotation.

Pham 591 Report

This analysis was run 07/09/24 on database version 566.

Pham number 591 has 178 members, 17 are drafts.

Phages represented in each track:

- Track 1 : Loanshark_19, Megamind_19, EmToTheThree_22, Izajani_20, Delylah_22, TinyTim_19, Norm_19, Khaleesi_19, Roots515_19, YemiJoy2021_20, Asterius_19, NedWong_20, Pleione_21, ChaylaJr_18, Ewok_19, Burrough_20, Bipolarisk_19, Blackbrain_18, Bonray_19, Capablanca_20, ScottMcG_21, DrPhinkDaddy_19, Salacia_21, Jessibeth14_19, FudgeTart_20, SrishMeg2525_19, Delilah_19, FoxtrotP1_20, Iota_17, Maby2021_20, Issimir_19, McWolfish_19, YoungMoneyMata_19, Gizmo_21, ChickenPhender_18, Lee7_19, MikeLiesIn_20, PurduePete_19
- Track 2 : Shnickers_18, SilverDipper_19, CindyLou_18, Rizal_18, JPickles_18, Patter_18, Babyland_18, BackyardAgain_17, Naija_18, Cactojaque_17, Teardrop_18, StubbySaigey_19, Matsumoto_17, I3_21, Atlantean_18, Chargie21_18, Phlegm_20, Concombre_19, Spec_17, Napoleon13_18, Derek_19, InigoMontoya_20, EggyFarm_23, LifeSavor_19, Catera_18, ShiaLabeouf_18, Grasshills_23, Essence_18, Kboogie_19, Jedediah_19, Morizzled23_18, Amataga_18, JustHall_18, Dietrick_16, Guwapp_18, Melpomini_18, Turret_18, Trinitium_18, ErnieJ_22, SmallFry_18, Rahel_18, Quasimodo_18, Phusco_18, McGee_19, Willis_20, DirtMonster_17, Janiyra_18, Ghost_19, BigCity_23, Jaygup_18, Fludd_18, Shelob_22, Ading_18, Latch_18, Gamgam_18, Basquiat_18, Tortoise16_17, Pivoine_18, Audrick_20, Breeniome_19, ValleyTerrace_18, EasyJones_19, JayJay_21, Adlitam_18
- Track 3 : BeanWater_15, ET08_16, Sebata_21
- Track 4 : ZygoTaiga_20, Daffodil_21, Yucca_19, Erdmann_20
- Track 5 : Shaqnato_16, Bigswole_24, Halldule_16, LolaVinca_22, Koguma_16, MoMoMixon_21, Astraea_20, IkeLoa_15, JulietS_15, Spud_22, Caravan_19, NuevoMundo_23, Sprinklers_20, InterFolia_25, FrayBell_25, Ronan_15, LordLeafolot_25, Kamryn_18, Yassified_17, Blackdragon_16, RoMag_14, NoodleTree_18, Nidhogg_21, Sauce_21, Mikro_18, QBert_18, Specks_23, Naval22_21, BadAgartude_21, Tyke_21, StephanieG_20, Cali_21, Bxz1_21, Lukilu_14, Grungle_14
- Track 6 : Ava3_20, Zeenon_22, Zalkecks_21, ParkTD_19, Bread_20, Shrimp_19
- Track 7 : Ngannou_18, Bangla1971_18, ArcherS7_18, Jemmno_18, Nappy_21, Momo_18, Gabriel_19, Wally_18
- Track 8 : CharlieB_20, Drazdys_20, Rabinovish_19, Pier_21, LRRHood_18, LinStu_21, Phox_19, Pio_22, DTDevon_20
- Track 9 : EmmaElysia_18, Littleton_19
- Track 10 : Darko_18, BananaFence_21
- Track 11 : Dandelion_23

- Track 12 : Chomp_17
- Track 13 : Mangeria_22
- Track 14 : Phabba_7
- Track 15 : Greely_7
- Track 16 : Myrna_7
- Track 17 : ScoobyDoobyDoo_11

Summary of Final Annotations (See graph section above for start numbers):

The start number called the most often in the published annotations is 12, it was called in 126 of the 161 non-draft genes in the pham.

Genes that call this "Most Annotated" start:

- Ading_18, Adlitam_18, Amataga_18, Asterius_19, Astraea_20, Atlantean_18, Audrick_20, Babyland_18, BackyardAgain_17, BadAgartude_21, BananaFence_21, Basquiat_18, BigCity_23, Bigswole_24, Bipolarisk_19, Blackbrain_18, Blackdragon_16, Bonray_19, Breeniome_19, Burrough_20, Bxz1_21, Cactojaque_17, Cali_21, Capablanca_20, Caravan_19, Catera_18, Chargie21_18, ChaylaJr_18, ChickenPhender_18, Chomp_17, CindyLou_18, Concombre_19, Dandelion_23, Darko_18, Delilah_19, Delylah_22, Derek_19, Dietrick_16, DirtMonster_17, DrPhinkDaddy_19, EasyJones_19, EggyFarm_23, EmToTheThree_22, ErnieJ_22, Essence_18, Ewok_19, Fludd_18, FoxtrotP1_20, FrayBell_25, FudgeTart_20, Gamgam_18, Ghost_19, Gizmo_21, Grasshills_23, Grungle_14, Guwapp_18, Halldule_16, I3_21, IkeLoa_15, InigoMontoya_20, InterFolia_25, Iota_17, Issimir_19, Izajani_20, JPickles_18, Janiyra_18, JayJay_21, Jaygup_18, Jedediah_19, Jessibeth14_19, JulietS_15, JustHall_18, Kamryn_18, Kboogie_19, Khaleesi_19, Koguma_16, Latch_18, Lee7_19, LifeSavor_19, Loanshark_19, LolaVinca_22, LordLeafolot_25, Lukilu_14, Maby2021_20, Mangeria_22, Matsumoto_17, McGee_19, McWolfish_19, Megamind_19, Melpomini_18, MikeLiesIn_20, Mikro_18, MoMoMixon_21, Morizzled23_18, Naija_18, Napoleon13_18, Naval22_21, NedWong_20, Nidhogg_21, NoodleTree_18, Norm_19, NuevoMundo_23, Patter_18, Phlegm_20, Phusco_18, Pivoine_18, Pleione_21, PurduePete_19, QBert_18, Quasimodo_18, Rahel_18, Rizal_18, RoMag_14, Ronan_15, Roots515_19, Salacia_21, Sauce_21, ScottMcG_21, Shaqnato_16, Shelob_22, ShiaLabeouf_18, Shnickers_18, SilverDipper_19, SmallFry_18, Spec_17, Specks_23, Sprinklers_20, Spud_22, SrishMeg2525_19, StephanieG_20, StubbySaigey_19, Teardrop_18, TinyTim_19, Tortoise16_17, Trinitium_18, Turret_18, Tyke_21, ValleyTerrace_18, Willis_20, Yassified_17, YemiJoy2021_20, YoungMoneyMata_19,

Genes that have the "Most Annotated" start but do not call it:

- ArcherS7_18, Ava3_20, Bangla1971_18, BeanWater_15, Bread_20, CharlieB_20, DTDevon_20, Daffodil_21, Drazdys_20, ET08_16, EmmaElysia_18, Erdmann_20, Gabriel_19, Jemmno_18, LRRHood_18, LinStu_21, Littleton_19, Momo_18, Nappy_21, Ngannou_18, ParkTD_19, Phox_19, Pier_21, Pio_22, Rabinovish_19, Sebata_21, Shrimp_19, Wally_18, Yucca_19, Zalkecks_21, Zeenon_22, ZygoTaiga_20,

Genes that do not have the "Most Annotated" start:

- Greely_7, Myrna_7, Phabba_7, ScoobyDoobyDoo_11,

Summary by start number:

Start 8:

- Found in 174 of 178 (97.8%) of genes in pham
- Manual Annotations of this start: 15 of 161
- Called 8.6% of time when present
- Phage (with cluster) where this start called: CharlieB_20 (C1), DTDevon_20 (C1), Daffodil_21 (C1), Drazdys_20 (C1), EmmaElysia_18 (C1), Erdmann_20 (C1), LRRHood_18 (C1), LinStu_21 (C1), Littleton_19 (C1), Phox_19 (C1), Pier_21 (C1), Pio_22 (C1), Rabinovish_19 (C1), Yucca_19 (C1), ZygoTaiga_20 (C1),

Start 9:

- Found in 2 of 178 (1.1%) of genes in pham
- No Manual Annotations of this start.
- Called 50.0% of time when present
- Phage (with cluster) where this start called: Greely_7 (C2),

Start 10:

- Found in 1 of 178 (0.6%) of genes in pham
- Manual Annotations of this start: 1 of 161
- Called 100.0% of time when present
- Phage (with cluster) where this start called: Phabba_7 (C2),

Start 11:

- Found in 174 of 178 (97.8%) of genes in pham
- Manual Annotations of this start: 17 of 161
- Called 9.8% of time when present
- Phage (with cluster) where this start called: ArcherS7_18 (C1), Ava3_20 (C1), Bangla1971_18 (C1), BeanWater_15 (C1), Bread_20 (C1), ET08_16 (C1), Gabriel_19 (C1), Jemmno_18 (C1), Momo_18 (C1), Nappy_21 (C1), Ngannou_18 (C1), ParkTD_19 (C1), Sebata_21 (C1), Shrimp_19 (C1), Wally_18 (C1), Zalkecks_21 (C1), Zeenon_22 (C1),

Start 12:

- Found in 174 of 178 (97.8%) of genes in pham
- Manual Annotations of this start: 126 of 161
- Called 81.6% of time when present
- Phage (with cluster) where this start called: Ading_18 (C1), Adlitam_18 (C1), Amataga_18 (C1), Asterius_19 (C1), Astraea_20 (C1), Atlantean_18 (C1), Audrick_20 (C1), Babyland_18 (C1), BackyardAgain_17 (C1), BadAgartude_21 (C1), BananaFence_21 (C1), Basquiat_18 (C1), BigCity_23 (C1), Bigswole_24 (C1), Bipolarisk_19 (C1), Blackbrain_18 (C1), Blackdragon_16 (C1), Bonray_19 (C1), Breeniome_19 (C1), Burrough_20 (C1), Bxz1_21 (C1), Cactojaque_17 (C1), Cali_21 (C1), Capablanca_20 (C1), Caravan_19 (C1), Catera_18 (C1), Chargie21_18 (C1), ChaylaJr_18 (C1), ChickenPhender_18 (C1), Chomp_17 (C1), CindyLou_18 (C1), Concombre_19 (C1), Dandelion_23 (C1), Darko_18 (C1), Delilah_19 (C1), Delylah_22 (C1), Derek_19 (C1), Dietrick_16 (C1), DirtMonster_17 (C1), DrPhinkDaddy_19 (C1), EasyJones_19 (C1), EggyFarm_23 (C1), EmToTheThree_22 (C1), ErnieJ_22 (C1), Essence_18 (C1), Ewok_19 (C1), Fludd_18 (C1), FoxtrotP1_20 (C1), FrayBell_25 (C1), FudgeTart_20 (C1), Gamgam_18 (C1), Ghost_19 (C1), Gizmo_21 (C1), Grasshills_23 (C1), Grungle_14 (C1), Guwapp_18 (C1), Halldule_16 (C1), I3_21 (C1), IkeLoa_15 (C1), InigoMontoya_20 (C1), InterFolia_25 (C1), Iota_17

(C1), Issimir_19 (C1), Izajani_20 (C1), JPickles_18 (C1), Janiyra_18 (C1), JayJay_21 (C1), Jaygup_18 (C1), Jedediah_19 (C1), Jessibeth14_19 (C1), JulietS_15 (C1), JustHall_18 (C1), Kamryn_18 (C1), Kboogie_19 (C1), Khaleesi_19 (C1), Koguma_16 (C1), Latch_18 (C1), Lee7_19 (C1), LifeSavor_19 (C1), Loanshark_19 (C1), LolaVinca_22 (C1), LordLeafolot_25 (C1), Lukilu_14 (C1), Maby2021_20 (C1), Mangeria_22 (C1), Matsumoto_17 (C1), McGee_19 (C1), McWolfish_19 (C1), Megamind_19 (C1), Melpomini_18 (C1), MikeLiesIn_20 (C1), Mikro_18 (C1), MoMoMixon_21 (C1), Morizzled23_18 (C1), Naija_18 (C1), Napoleon13_18 (C1), Naval22_21 (C1), NedWong_20 (C1), Nidhogg_21 (C1), NoodleTree_18 (C1), Norm_19 (C1), NuevoMundo_23 (C1), Patter_18 (C1), Phlegm_20 (C1), Phusco_18 (C1), Pivoine_18 (C1), Pleione_21 (C1), PurduePete_19 (C1), QBert_18 (C1), Quasimodo_18 (C1), Rahel_18 (C1), Rizal_18 (C1), RoMag_14 (C1), Ronan_15 (C1), Roots515_19 (C1), Salacia_21 (C1), Sauce_21 (C1), ScottMcG_21 (C1), Shaqnto_16 (C1), Shelob_22 (C1), ShiaLabeouf_18 (C1), Shnickers_18 (C1), SilverDipper_19 (C1), SmallFry_18 (C1), Spec_17 (C1), Specks_23 (C1), Sprinklers_20 (C1), Spud_22 (C1), SrishMeg2525_19 (C1), StephanieG_20 (C1), StubbySaigey_19 (C1), Teardrop_18 (C1), TinyTim_19 (C1), Tortoise16_17 (C1), Trinitium_18 (C1), Turret_18 (C1), Tyke_21 (C1), ValleyTerrace_18 (C1), Willis_20 (C1), Yassified_17 (C1), YemiJoy2021_20 (C1), YoungMoneyMata_19 (C1),

Start 13:

- Found in 1 of 178 (0.6%) of genes in pham
- Manual Annotations of this start: 1 of 161
- Called 100.0% of time when present
- Phage (with cluster) where this start called: ScoobyDoobyDoo_11 (C2),

Start 14:

- Found in 175 of 178 (98.3%) of genes in pham
- Manual Annotations of this start: 1 of 161
- Called 0.6% of time when present
- Phage (with cluster) where this start called: Myrna_7 (C2),

Summary by clusters:

There are 2 clusters represented in this pham: C2, C1,

Info for manual annotations of cluster C1:

- Start number 8 was manually annotated 15 times for cluster C1.
- Start number 11 was manually annotated 17 times for cluster C1.
- Start number 12 was manually annotated 126 times for cluster C1.

Info for manual annotations of cluster C2:

- Start number 10 was manually annotated 1 time for cluster C2.
- Start number 13 was manually annotated 1 time for cluster C2.
- Start number 14 was manually annotated 1 time for cluster C2.

Gene Information:

Gene: Ading_18 Start: 5727, Stop: 5912, Start Num: 12

Candidate Starts for Ading_18:

(Start: 8 @5709 has 15 MA's), (Start: 11 @5724 has 17 MA's), (Start: 12 @5727 has 126 MA's), (Start: 14 @5745 has 1 MA's),

Gene: Adlitam_18 Start: 5744, Stop: 5929, Start Num: 12

Candidate Starts for Adlitam_18:

(Start: 8 @5726 has 15 MA's), (Start: 11 @5741 has 17 MA's), (Start: 12 @5744 has 126 MA's), (Start: 14 @5762 has 1 MA's),

Gene: Amataga_18 Start: 5748, Stop: 5933, Start Num: 12

Candidate Starts for Amataga_18:

(Start: 8 @5730 has 15 MA's), (Start: 11 @5745 has 17 MA's), (Start: 12 @5748 has 126 MA's), (Start: 14 @5766 has 1 MA's),

Gene: ArcherS7_18 Start: 5741, Stop: 5929, Start Num: 11

Candidate Starts for ArcherS7_18:

(Start: 8 @5726 has 15 MA's), (Start: 11 @5741 has 17 MA's), (Start: 12 @5744 has 126 MA's), (Start: 14 @5762 has 1 MA's),

Gene: Asterius_19 Start: 6858, Stop: 7043, Start Num: 12

Candidate Starts for Asterius_19:

(1, 6534), (Start: 8 @6840 has 15 MA's), (Start: 11 @6855 has 17 MA's), (Start: 12 @6858 has 126 MA's), (Start: 14 @6876 has 1 MA's),

Gene: Astraea_20 Start: 6465, Stop: 6650, Start Num: 12

Candidate Starts for Astraea_20:

(Start: 8 @6447 has 15 MA's), (Start: 11 @6462 has 17 MA's), (Start: 12 @6465 has 126 MA's), (Start: 14 @6483 has 1 MA's),

Gene: Atlantean_18 Start: 5748, Stop: 5933, Start Num: 12

Candidate Starts for Atlantean_18:

(Start: 8 @5730 has 15 MA's), (Start: 11 @5745 has 17 MA's), (Start: 12 @5748 has 126 MA's), (Start: 14 @5766 has 1 MA's),

Gene: Audrick_20 Start: 5727, Stop: 5912, Start Num: 12

Candidate Starts for Audrick_20:

(Start: 8 @5709 has 15 MA's), (Start: 11 @5724 has 17 MA's), (Start: 12 @5727 has 126 MA's), (Start: 14 @5745 has 1 MA's),

Gene: Ava3_20 Start: 6855, Stop: 7043, Start Num: 11

Candidate Starts for Ava3_20:

(1, 6534), (Start: 8 @6840 has 15 MA's), (Start: 11 @6855 has 17 MA's), (Start: 12 @6858 has 126 MA's), (Start: 14 @6876 has 1 MA's),

Gene: Babyland_18 Start: 5748, Stop: 5933, Start Num: 12

Candidate Starts for Babyland_18:

(Start: 8 @5730 has 15 MA's), (Start: 11 @5745 has 17 MA's), (Start: 12 @5748 has 126 MA's), (Start: 14 @5766 has 1 MA's),

Gene: BackyardAgain_17 Start: 5744, Stop: 5929, Start Num: 12

Candidate Starts for BackyardAgain_17:

(Start: 8 @5726 has 15 MA's), (Start: 11 @5741 has 17 MA's), (Start: 12 @5744 has 126 MA's), (Start: 14 @5762 has 1 MA's),

Gene: BadAgartude_21 Start: 7186, Stop: 7371, Start Num: 12
Candidate Starts for BadAgartude_21:
(Start: 8 @7168 has 15 MA's), (Start: 11 @7183 has 17 MA's), (Start: 12 @7186 has 126 MA's), (Start: 14 @7204 has 1 MA's),

Gene: BananaFence_21 Start: 6751, Stop: 6936, Start Num: 12
Candidate Starts for BananaFence_21:
(Start: 8 @6733 has 15 MA's), (Start: 11 @6748 has 17 MA's), (Start: 12 @6751 has 126 MA's), (Start: 14 @6769 has 1 MA's),

Gene: Bangla1971_18 Start: 5741, Stop: 5929, Start Num: 11
Candidate Starts for Bangla1971_18:
(Start: 8 @5726 has 15 MA's), (Start: 11 @5741 has 17 MA's), (Start: 12 @5744 has 126 MA's), (Start: 14 @5762 has 1 MA's),

Gene: Basquiat_18 Start: 5729, Stop: 5914, Start Num: 12
Candidate Starts for Basquiat_18:
(Start: 8 @5711 has 15 MA's), (Start: 11 @5726 has 17 MA's), (Start: 12 @5729 has 126 MA's), (Start: 14 @5747 has 1 MA's),

Gene: BeanWater_15 Start: 6165, Stop: 6353, Start Num: 11
Candidate Starts for BeanWater_15:
(Start: 8 @6150 has 15 MA's), (Start: 11 @6165 has 17 MA's), (Start: 12 @6168 has 126 MA's), (Start: 14 @6186 has 1 MA's),

Gene: BigCity_23 Start: 8118, Stop: 8303, Start Num: 12
Candidate Starts for BigCity_23:
(Start: 8 @8100 has 15 MA's), (Start: 11 @8115 has 17 MA's), (Start: 12 @8118 has 126 MA's), (Start: 14 @8136 has 1 MA's),

Gene: Bigswole_24 Start: 8181, Stop: 8366, Start Num: 12
Candidate Starts for Bigswole_24:
(Start: 8 @8163 has 15 MA's), (Start: 11 @8178 has 17 MA's), (Start: 12 @8181 has 126 MA's), (Start: 14 @8199 has 1 MA's),

Gene: Bipolarisk_19 Start: 6858, Stop: 7043, Start Num: 12
Candidate Starts for Bipolarisk_19:
(1, 6534), (Start: 8 @6840 has 15 MA's), (Start: 11 @6855 has 17 MA's), (Start: 12 @6858 has 126 MA's), (Start: 14 @6876 has 1 MA's),

Gene: Blackbrain_18 Start: 5789, Stop: 5974, Start Num: 12
Candidate Starts for Blackbrain_18:
(1, 5465), (Start: 8 @5771 has 15 MA's), (Start: 11 @5786 has 17 MA's), (Start: 12 @5789 has 126 MA's), (Start: 14 @5807 has 1 MA's),

Gene: Blackdragon_16 Start: 5595, Stop: 5780, Start Num: 12
Candidate Starts for Blackdragon_16:
(Start: 8 @5577 has 15 MA's), (Start: 11 @5592 has 17 MA's), (Start: 12 @5595 has 126 MA's), (Start: 14 @5613 has 1 MA's),

Gene: Bonray_19 Start: 6852, Stop: 7037, Start Num: 12
Candidate Starts for Bonray_19:

(1, 6528), (Start: 8 @6834 has 15 MA's), (Start: 11 @6849 has 17 MA's), (Start: 12 @6852 has 126 MA's), (Start: 14 @6870 has 1 MA's),

Gene: Bread_20 Start: 6855, Stop: 7043, Start Num: 11

Candidate Starts for Bread_20:

(1, 6534), (Start: 8 @6840 has 15 MA's), (Start: 11 @6855 has 17 MA's), (Start: 12 @6858 has 126 MA's), (Start: 14 @6876 has 1 MA's),

Gene: Breeniome_19 Start: 5744, Stop: 5929, Start Num: 12

Candidate Starts for Breeniome_19:

(Start: 8 @5726 has 15 MA's), (Start: 11 @5741 has 17 MA's), (Start: 12 @5744 has 126 MA's), (Start: 14 @5762 has 1 MA's),

Gene: Burrough_20 Start: 6858, Stop: 7043, Start Num: 12

Candidate Starts for Burrough_20:

(1, 6534), (Start: 8 @6840 has 15 MA's), (Start: 11 @6855 has 17 MA's), (Start: 12 @6858 has 126 MA's), (Start: 14 @6876 has 1 MA's),

Gene: Bxz1_21 Start: 7291, Stop: 7476, Start Num: 12

Candidate Starts for Bxz1_21:

(Start: 8 @7273 has 15 MA's), (Start: 11 @7288 has 17 MA's), (Start: 12 @7291 has 126 MA's), (Start: 14 @7309 has 1 MA's),

Gene: Cactojaque_17 Start: 5678, Stop: 5863, Start Num: 12

Candidate Starts for Cactojaque_17:

(Start: 8 @5660 has 15 MA's), (Start: 11 @5675 has 17 MA's), (Start: 12 @5678 has 126 MA's), (Start: 14 @5696 has 1 MA's),

Gene: Cali_21 Start: 8162, Stop: 8347, Start Num: 12

Candidate Starts for Cali_21:

(Start: 8 @8144 has 15 MA's), (Start: 11 @8159 has 17 MA's), (Start: 12 @8162 has 126 MA's), (Start: 14 @8180 has 1 MA's),

Gene: Capablanca_20 Start: 6873, Stop: 7058, Start Num: 12

Candidate Starts for Capablanca_20:

(1, 6549), (Start: 8 @6855 has 15 MA's), (Start: 11 @6870 has 17 MA's), (Start: 12 @6873 has 126 MA's), (Start: 14 @6891 has 1 MA's),

Gene: Caravan_19 Start: 6132, Stop: 6317, Start Num: 12

Candidate Starts for Caravan_19:

(Start: 8 @6114 has 15 MA's), (Start: 11 @6129 has 17 MA's), (Start: 12 @6132 has 126 MA's), (Start: 14 @6150 has 1 MA's),

Gene: Catera_18 Start: 5748, Stop: 5933, Start Num: 12

Candidate Starts for Catera_18:

(Start: 8 @5730 has 15 MA's), (Start: 11 @5745 has 17 MA's), (Start: 12 @5748 has 126 MA's), (Start: 14 @5766 has 1 MA's),

Gene: Chargie21_18 Start: 5729, Stop: 5914, Start Num: 12

Candidate Starts for Chargie21_18:

(Start: 8 @5711 has 15 MA's), (Start: 11 @5726 has 17 MA's), (Start: 12 @5729 has 126 MA's), (Start: 14 @5747 has 1 MA's),

Gene: CharlieB_20 Start: 6109, Stop: 6312, Start Num: 8
Candidate Starts for CharlieB_20:
(Start: 8 @6109 has 15 MA's), (Start: 11 @6124 has 17 MA's), (Start: 12 @6127 has 126 MA's), (Start: 14 @6145 has 1 MA's),

Gene: ChaylaJr_18 Start: 5816, Stop: 6001, Start Num: 12
Candidate Starts for ChaylaJr_18:
(1, 5492), (Start: 8 @5798 has 15 MA's), (Start: 11 @5813 has 17 MA's), (Start: 12 @5816 has 126 MA's), (Start: 14 @5834 has 1 MA's),

Gene: ChickenPhender_18 Start: 5774, Stop: 5959, Start Num: 12
Candidate Starts for ChickenPhender_18:
(1, 5450), (Start: 8 @5756 has 15 MA's), (Start: 11 @5771 has 17 MA's), (Start: 12 @5774 has 126 MA's), (Start: 14 @5792 has 1 MA's),

Gene: Chomp_17 Start: 5748, Stop: 5933, Start Num: 12
Candidate Starts for Chomp_17:
(Start: 8 @5730 has 15 MA's), (Start: 11 @5745 has 17 MA's), (Start: 12 @5748 has 126 MA's), (Start: 14 @5766 has 1 MA's),

Gene: CindyLou_18 Start: 5748, Stop: 5933, Start Num: 12
Candidate Starts for CindyLou_18:
(Start: 8 @5730 has 15 MA's), (Start: 11 @5745 has 17 MA's), (Start: 12 @5748 has 126 MA's), (Start: 14 @5766 has 1 MA's),

Gene: Concombre_19 Start: 6814, Stop: 6999, Start Num: 12
Candidate Starts for Concombre_19:
(Start: 8 @6796 has 15 MA's), (Start: 11 @6811 has 17 MA's), (Start: 12 @6814 has 126 MA's), (Start: 14 @6832 has 1 MA's),

Gene: DTDevon_20 Start: 6894, Stop: 7097, Start Num: 8
Candidate Starts for DTDevon_20:
(Start: 8 @6894 has 15 MA's), (Start: 11 @6909 has 17 MA's), (Start: 12 @6912 has 126 MA's), (Start: 14 @6930 has 1 MA's),

Gene: Daffodil_21 Start: 6840, Stop: 7043, Start Num: 8
Candidate Starts for Daffodil_21:
(1, 6534), (Start: 8 @6840 has 15 MA's), (Start: 11 @6855 has 17 MA's), (Start: 12 @6858 has 126 MA's), (Start: 14 @6876 has 1 MA's),

Gene: Dandelion_23 Start: 7641, Stop: 7826, Start Num: 12
Candidate Starts for Dandelion_23:
(Start: 8 @7623 has 15 MA's), (Start: 11 @7638 has 17 MA's), (Start: 12 @7641 has 126 MA's), (Start: 14 @7659 has 1 MA's),

Gene: Darko_18 Start: 6720, Stop: 6905, Start Num: 12
Candidate Starts for Darko_18:
(Start: 8 @6702 has 15 MA's), (Start: 11 @6717 has 17 MA's), (Start: 12 @6720 has 126 MA's), (Start: 14 @6738 has 1 MA's),

Gene: Delilah_19 Start: 6858, Stop: 7043, Start Num: 12
Candidate Starts for Delilah_19:

(1, 6534), (Start: 8 @6840 has 15 MA's), (Start: 11 @6855 has 17 MA's), (Start: 12 @6858 has 126 MA's), (Start: 14 @6876 has 1 MA's),

Gene: Delylah_22 Start: 6885, Stop: 7070, Start Num: 12

Candidate Starts for Delylah_22:

(1, 6561), (Start: 8 @6867 has 15 MA's), (Start: 11 @6882 has 17 MA's), (Start: 12 @6885 has 126 MA's), (Start: 14 @6903 has 1 MA's),

Gene: Derek_19 Start: 5744, Stop: 5929, Start Num: 12

Candidate Starts for Derek_19:

(Start: 8 @5726 has 15 MA's), (Start: 11 @5741 has 17 MA's), (Start: 12 @5744 has 126 MA's), (Start: 14 @5762 has 1 MA's),

Gene: Dietrick_16 Start: 5746, Stop: 5931, Start Num: 12

Candidate Starts for Dietrick_16:

(Start: 8 @5728 has 15 MA's), (Start: 11 @5743 has 17 MA's), (Start: 12 @5746 has 126 MA's), (Start: 14 @5764 has 1 MA's),

Gene: DirtMonster_17 Start: 6873, Stop: 7058, Start Num: 12

Candidate Starts for DirtMonster_17:

(Start: 8 @6855 has 15 MA's), (Start: 11 @6870 has 17 MA's), (Start: 12 @6873 has 126 MA's), (Start: 14 @6891 has 1 MA's),

Gene: DrPhinkDaddy_19 Start: 6858, Stop: 7043, Start Num: 12

Candidate Starts for DrPhinkDaddy_19:

(1, 6534), (Start: 8 @6840 has 15 MA's), (Start: 11 @6855 has 17 MA's), (Start: 12 @6858 has 126 MA's), (Start: 14 @6876 has 1 MA's),

Gene: Drazdys_20 Start: 6595, Stop: 6798, Start Num: 8

Candidate Starts for Drazdys_20:

(Start: 8 @6595 has 15 MA's), (Start: 11 @6610 has 17 MA's), (Start: 12 @6613 has 126 MA's), (Start: 14 @6631 has 1 MA's),

Gene: ET08_16 Start: 6552, Stop: 6740, Start Num: 11

Candidate Starts for ET08_16:

(Start: 8 @6537 has 15 MA's), (Start: 11 @6552 has 17 MA's), (Start: 12 @6555 has 126 MA's), (Start: 14 @6573 has 1 MA's),

Gene: EasyJones_19 Start: 5729, Stop: 5914, Start Num: 12

Candidate Starts for EasyJones_19:

(Start: 8 @5711 has 15 MA's), (Start: 11 @5726 has 17 MA's), (Start: 12 @5729 has 126 MA's), (Start: 14 @5747 has 1 MA's),

Gene: EggyFarm_23 Start: 8118, Stop: 8303, Start Num: 12

Candidate Starts for EggyFarm_23:

(Start: 8 @8100 has 15 MA's), (Start: 11 @8115 has 17 MA's), (Start: 12 @8118 has 126 MA's), (Start: 14 @8136 has 1 MA's),

Gene: EmToTheThree_22 Start: 8272, Stop: 8457, Start Num: 12

Candidate Starts for EmToTheThree_22:

(1, 7948), (Start: 8 @8254 has 15 MA's), (Start: 11 @8269 has 17 MA's), (Start: 12 @8272 has 126 MA's), (Start: 14 @8290 has 1 MA's),

Gene: EmmaElysia_18 Start: 5726, Stop: 5929, Start Num: 8
Candidate Starts for EmmaElysia_18:
(Start: 8 @5726 has 15 MA's), (Start: 11 @5741 has 17 MA's), (Start: 12 @5744 has 126 MA's), (Start: 14 @5762 has 1 MA's),

Gene: Erdmann_20 Start: 6840, Stop: 7043, Start Num: 8
Candidate Starts for Erdmann_20:
(1, 6534), (Start: 8 @6840 has 15 MA's), (Start: 11 @6855 has 17 MA's), (Start: 12 @6858 has 126 MA's), (Start: 14 @6876 has 1 MA's),

Gene: ErnieJ_22 Start: 6919, Stop: 7104, Start Num: 12
Candidate Starts for ErnieJ_22:
(Start: 8 @6901 has 15 MA's), (Start: 11 @6916 has 17 MA's), (Start: 12 @6919 has 126 MA's), (Start: 14 @6937 has 1 MA's),

Gene: Essence_18 Start: 5744, Stop: 5929, Start Num: 12
Candidate Starts for Essence_18:
(Start: 8 @5726 has 15 MA's), (Start: 11 @5741 has 17 MA's), (Start: 12 @5744 has 126 MA's), (Start: 14 @5762 has 1 MA's),

Gene: Ewok_19 Start: 6858, Stop: 7043, Start Num: 12
Candidate Starts for Ewok_19:
(1, 6534), (Start: 8 @6840 has 15 MA's), (Start: 11 @6855 has 17 MA's), (Start: 12 @6858 has 126 MA's), (Start: 14 @6876 has 1 MA's),

Gene: Fludd_18 Start: 5730, Stop: 5915, Start Num: 12
Candidate Starts for Fludd_18:
(Start: 8 @5712 has 15 MA's), (Start: 11 @5727 has 17 MA's), (Start: 12 @5730 has 126 MA's), (Start: 14 @5748 has 1 MA's),

Gene: FoxtrotP1_20 Start: 7417, Stop: 7602, Start Num: 12
Candidate Starts for FoxtrotP1_20:
(1, 7093), (Start: 8 @7399 has 15 MA's), (Start: 11 @7414 has 17 MA's), (Start: 12 @7417 has 126 MA's), (Start: 14 @7435 has 1 MA's),

Gene: FrayBell_25 Start: 8438, Stop: 8623, Start Num: 12
Candidate Starts for FrayBell_25:
(Start: 8 @8420 has 15 MA's), (Start: 11 @8435 has 17 MA's), (Start: 12 @8438 has 126 MA's), (Start: 14 @8456 has 1 MA's),

Gene: FudgeTart_20 Start: 6858, Stop: 7043, Start Num: 12
Candidate Starts for FudgeTart_20:
(1, 6534), (Start: 8 @6840 has 15 MA's), (Start: 11 @6855 has 17 MA's), (Start: 12 @6858 has 126 MA's), (Start: 14 @6876 has 1 MA's),

Gene: Gabriel_19 Start: 5741, Stop: 5929, Start Num: 11
Candidate Starts for Gabriel_19:
(Start: 8 @5726 has 15 MA's), (Start: 11 @5741 has 17 MA's), (Start: 12 @5744 has 126 MA's), (Start: 14 @5762 has 1 MA's),

Gene: Gamgam_18 Start: 5748, Stop: 5933, Start Num: 12
Candidate Starts for Gamgam_18:

(Start: 8 @5730 has 15 MA's), (Start: 11 @5745 has 17 MA's), (Start: 12 @5748 has 126 MA's), (Start: 14 @5766 has 1 MA's),

Gene: Ghost_19 Start: 5748, Stop: 5933, Start Num: 12

Candidate Starts for Ghost_19:

(Start: 8 @5730 has 15 MA's), (Start: 11 @5745 has 17 MA's), (Start: 12 @5748 has 126 MA's), (Start: 14 @5766 has 1 MA's),

Gene: Gizmo_21 Start: 6858, Stop: 7043, Start Num: 12

Candidate Starts for Gizmo_21:

(1, 6534), (Start: 8 @6840 has 15 MA's), (Start: 11 @6855 has 17 MA's), (Start: 12 @6858 has 126 MA's), (Start: 14 @6876 has 1 MA's),

Gene: Grasshills_23 Start: 8118, Stop: 8303, Start Num: 12

Candidate Starts for Grasshills_23:

(Start: 8 @8100 has 15 MA's), (Start: 11 @8115 has 17 MA's), (Start: 12 @8118 has 126 MA's), (Start: 14 @8136 has 1 MA's),

Gene: Greely_7 Start: 2638, Stop: 2832, Start Num: 9

Candidate Starts for Greely_7:

(6, 2521), (9, 2638),

Gene: Grungle_14 Start: 4697, Stop: 4882, Start Num: 12

Candidate Starts for Grungle_14:

(Start: 8 @4679 has 15 MA's), (Start: 11 @4694 has 17 MA's), (Start: 12 @4697 has 126 MA's), (Start: 14 @4715 has 1 MA's),

Gene: Guwapp_18 Start: 5744, Stop: 5929, Start Num: 12

Candidate Starts for Guwapp_18:

(Start: 8 @5726 has 15 MA's), (Start: 11 @5741 has 17 MA's), (Start: 12 @5744 has 126 MA's), (Start: 14 @5762 has 1 MA's),

Gene: Halldule_16 Start: 5340, Stop: 5525, Start Num: 12

Candidate Starts for Halldule_16:

(Start: 8 @5322 has 15 MA's), (Start: 11 @5337 has 17 MA's), (Start: 12 @5340 has 126 MA's), (Start: 14 @5358 has 1 MA's),

Gene: I3_21 Start: 7407, Stop: 7592, Start Num: 12

Candidate Starts for I3_21:

(Start: 8 @7389 has 15 MA's), (Start: 11 @7404 has 17 MA's), (Start: 12 @7407 has 126 MA's), (Start: 14 @7425 has 1 MA's),

Gene: IkeLoa_15 Start: 5874, Stop: 6059, Start Num: 12

Candidate Starts for IkeLoa_15:

(Start: 8 @5856 has 15 MA's), (Start: 11 @5871 has 17 MA's), (Start: 12 @5874 has 126 MA's), (Start: 14 @5892 has 1 MA's),

Gene: InigoMontoya_20 Start: 5748, Stop: 5933, Start Num: 12

Candidate Starts for InigoMontoya_20:

(Start: 8 @5730 has 15 MA's), (Start: 11 @5745 has 17 MA's), (Start: 12 @5748 has 126 MA's), (Start: 14 @5766 has 1 MA's),

Gene: InterFolia_25 Start: 8435, Stop: 8620, Start Num: 12

Candidate Starts for InterFolia_25:

(Start: 8 @8417 has 15 MA's), (Start: 11 @8432 has 17 MA's), (Start: 12 @8435 has 126 MA's), (Start: 14 @8453 has 1 MA's),

Gene: Iota_17 Start: 6637, Stop: 6822, Start Num: 12

Candidate Starts for Iota_17:

(1, 6313), (Start: 8 @6619 has 15 MA's), (Start: 11 @6634 has 17 MA's), (Start: 12 @6637 has 126 MA's), (Start: 14 @6655 has 1 MA's),

Gene: Issimir_19 Start: 6852, Stop: 7037, Start Num: 12

Candidate Starts for Issimir_19:

(1, 6528), (Start: 8 @6834 has 15 MA's), (Start: 11 @6849 has 17 MA's), (Start: 12 @6852 has 126 MA's), (Start: 14 @6870 has 1 MA's),

Gene: Izajani_20 Start: 6858, Stop: 7043, Start Num: 12

Candidate Starts for Izajani_20:

(1, 6534), (Start: 8 @6840 has 15 MA's), (Start: 11 @6855 has 17 MA's), (Start: 12 @6858 has 126 MA's), (Start: 14 @6876 has 1 MA's),

Gene: JPickles_18 Start: 5748, Stop: 5933, Start Num: 12

Candidate Starts for JPickles_18:

(Start: 8 @5730 has 15 MA's), (Start: 11 @5745 has 17 MA's), (Start: 12 @5748 has 126 MA's), (Start: 14 @5766 has 1 MA's),

Gene: Janiyra_18 Start: 5727, Stop: 5912, Start Num: 12

Candidate Starts for Janiyra_18:

(Start: 8 @5709 has 15 MA's), (Start: 11 @5724 has 17 MA's), (Start: 12 @5727 has 126 MA's), (Start: 14 @5745 has 1 MA's),

Gene: JayJay_21 Start: 6835, Stop: 7020, Start Num: 12

Candidate Starts for JayJay_21:

(Start: 8 @6817 has 15 MA's), (Start: 11 @6832 has 17 MA's), (Start: 12 @6835 has 126 MA's), (Start: 14 @6853 has 1 MA's),

Gene: Jaygup_18 Start: 5744, Stop: 5929, Start Num: 12

Candidate Starts for Jaygup_18:

(Start: 8 @5726 has 15 MA's), (Start: 11 @5741 has 17 MA's), (Start: 12 @5744 has 126 MA's), (Start: 14 @5762 has 1 MA's),

Gene: Jedediah_19 Start: 5748, Stop: 5933, Start Num: 12

Candidate Starts for Jedediah_19:

(Start: 8 @5730 has 15 MA's), (Start: 11 @5745 has 17 MA's), (Start: 12 @5748 has 126 MA's), (Start: 14 @5766 has 1 MA's),

Gene: Jemmno_18 Start: 5745, Stop: 5933, Start Num: 11

Candidate Starts for Jemmno_18:

(Start: 8 @5730 has 15 MA's), (Start: 11 @5745 has 17 MA's), (Start: 12 @5748 has 126 MA's), (Start: 14 @5766 has 1 MA's),

Gene: Jessibeth14_19 Start: 6858, Stop: 7043, Start Num: 12

Candidate Starts for Jessibeth14_19:

(1, 6534), (Start: 8 @6840 has 15 MA's), (Start: 11 @6855 has 17 MA's), (Start: 12 @6858 has 126 MA's), (Start: 14 @6876 has 1 MA's),

Gene: JulietS_15 Start: 4973, Stop: 5158, Start Num: 12

Candidate Starts for JulietS_15:

(Start: 8 @4955 has 15 MA's), (Start: 11 @4970 has 17 MA's), (Start: 12 @4973 has 126 MA's), (Start: 14 @4991 has 1 MA's),

Gene: JustHall_18 Start: 6743, Stop: 6928, Start Num: 12

Candidate Starts for JustHall_18:

(Start: 8 @6725 has 15 MA's), (Start: 11 @6740 has 17 MA's), (Start: 12 @6743 has 126 MA's), (Start: 14 @6761 has 1 MA's),

Gene: Kamryn_18 Start: 6078, Stop: 6263, Start Num: 12

Candidate Starts for Kamryn_18:

(Start: 8 @6060 has 15 MA's), (Start: 11 @6075 has 17 MA's), (Start: 12 @6078 has 126 MA's), (Start: 14 @6096 has 1 MA's),

Gene: Kboogie_19 Start: 5746, Stop: 5931, Start Num: 12

Candidate Starts for Kboogie_19:

(Start: 8 @5728 has 15 MA's), (Start: 11 @5743 has 17 MA's), (Start: 12 @5746 has 126 MA's), (Start: 14 @5764 has 1 MA's),

Gene: Khaleesi_19 Start: 6858, Stop: 7043, Start Num: 12

Candidate Starts for Khaleesi_19:

(1, 6534), (Start: 8 @6840 has 15 MA's), (Start: 11 @6855 has 17 MA's), (Start: 12 @6858 has 126 MA's), (Start: 14 @6876 has 1 MA's),

Gene: Koguma_16 Start: 5340, Stop: 5525, Start Num: 12

Candidate Starts for Koguma_16:

(Start: 8 @5322 has 15 MA's), (Start: 11 @5337 has 17 MA's), (Start: 12 @5340 has 126 MA's), (Start: 14 @5358 has 1 MA's),

Gene: LRRHood_18 Start: 7248, Stop: 7451, Start Num: 8

Candidate Starts for LRRHood_18:

(Start: 8 @7248 has 15 MA's), (Start: 11 @7263 has 17 MA's), (Start: 12 @7266 has 126 MA's), (Start: 14 @7284 has 1 MA's),

Gene: Latch_18 Start: 5748, Stop: 5933, Start Num: 12

Candidate Starts for Latch_18:

(Start: 8 @5730 has 15 MA's), (Start: 11 @5745 has 17 MA's), (Start: 12 @5748 has 126 MA's), (Start: 14 @5766 has 1 MA's),

Gene: Lee7_19 Start: 6858, Stop: 7043, Start Num: 12

Candidate Starts for Lee7_19:

(1, 6534), (Start: 8 @6840 has 15 MA's), (Start: 11 @6855 has 17 MA's), (Start: 12 @6858 has 126 MA's), (Start: 14 @6876 has 1 MA's),

Gene: LifeSavor_19 Start: 5744, Stop: 5929, Start Num: 12

Candidate Starts for LifeSavor_19:

(Start: 8 @5726 has 15 MA's), (Start: 11 @5741 has 17 MA's), (Start: 12 @5744 has 126 MA's), (Start: 14 @5762 has 1 MA's),

Gene: LinStu_21 Start: 7431, Stop: 7634, Start Num: 8

Candidate Starts for LinStu_21:

(Start: 8 @7431 has 15 MA's), (Start: 11 @7446 has 17 MA's), (Start: 12 @7449 has 126 MA's), (Start: 14 @7467 has 1 MA's),

Gene: Littleton_19 Start: 5730, Stop: 5933, Start Num: 8

Candidate Starts for Littleton_19:

(Start: 8 @5730 has 15 MA's), (Start: 11 @5745 has 17 MA's), (Start: 12 @5748 has 126 MA's), (Start: 14 @5766 has 1 MA's),

Gene: Loanshark_19 Start: 6858, Stop: 7043, Start Num: 12

Candidate Starts for Loanshark_19:

(1, 6534), (Start: 8 @6840 has 15 MA's), (Start: 11 @6855 has 17 MA's), (Start: 12 @6858 has 126 MA's), (Start: 14 @6876 has 1 MA's),

Gene: LolaVinca_22 Start: 7541, Stop: 7726, Start Num: 12

Candidate Starts for LolaVinca_22:

(Start: 8 @7523 has 15 MA's), (Start: 11 @7538 has 17 MA's), (Start: 12 @7541 has 126 MA's), (Start: 14 @7559 has 1 MA's),

Gene: LordLeafolot_25 Start: 8437, Stop: 8622, Start Num: 12

Candidate Starts for LordLeafolot_25:

(Start: 8 @8419 has 15 MA's), (Start: 11 @8434 has 17 MA's), (Start: 12 @8437 has 126 MA's), (Start: 14 @8455 has 1 MA's),

Gene: Lukilu_14 Start: 5690, Stop: 5875, Start Num: 12

Candidate Starts for Lukilu_14:

(Start: 8 @5672 has 15 MA's), (Start: 11 @5687 has 17 MA's), (Start: 12 @5690 has 126 MA's), (Start: 14 @5708 has 1 MA's),

Gene: Maby2021_20 Start: 6858, Stop: 7043, Start Num: 12

Candidate Starts for Maby2021_20:

(1, 6534), (Start: 8 @6840 has 15 MA's), (Start: 11 @6855 has 17 MA's), (Start: 12 @6858 has 126 MA's), (Start: 14 @6876 has 1 MA's),

Gene: Mangeria_22 Start: 7357, Stop: 7542, Start Num: 12

Candidate Starts for Mangeria_22:

(Start: 8 @7339 has 15 MA's), (Start: 11 @7354 has 17 MA's), (Start: 12 @7357 has 126 MA's), (Start: 14 @7375 has 1 MA's),

Gene: Matsumoto_17 Start: 5748, Stop: 5933, Start Num: 12

Candidate Starts for Matsumoto_17:

(Start: 8 @5730 has 15 MA's), (Start: 11 @5745 has 17 MA's), (Start: 12 @5748 has 126 MA's), (Start: 14 @5766 has 1 MA's),

Gene: McGee_19 Start: 5746, Stop: 5931, Start Num: 12

Candidate Starts for McGee_19:

(Start: 8 @5728 has 15 MA's), (Start: 11 @5743 has 17 MA's), (Start: 12 @5746 has 126 MA's), (Start: 14 @5764 has 1 MA's),

Gene: McWolfish_19 Start: 6858, Stop: 7043, Start Num: 12

Candidate Starts for McWolfish_19:

(1, 6534), (Start: 8 @6840 has 15 MA's), (Start: 11 @6855 has 17 MA's), (Start: 12 @6858 has 126 MA's), (Start: 14 @6876 has 1 MA's),

Gene: Megamind_19 Start: 6858, Stop: 7043, Start Num: 12
Candidate Starts for Megamind_19:
(1, 6534), (Start: 8 @6840 has 15 MA's), (Start: 11 @6855 has 17 MA's), (Start: 12 @6858 has 126 MA's), (Start: 14 @6876 has 1 MA's),

Gene: Melpomini_18 Start: 5727, Stop: 5912, Start Num: 12
Candidate Starts for Melpomini_18:
(Start: 8 @5709 has 15 MA's), (Start: 11 @5724 has 17 MA's), (Start: 12 @5727 has 126 MA's), (Start: 14 @5745 has 1 MA's),

Gene: MikeLiesIn_20 Start: 6858, Stop: 7043, Start Num: 12
Candidate Starts for MikeLiesIn_20:
(1, 6534), (Start: 8 @6840 has 15 MA's), (Start: 11 @6855 has 17 MA's), (Start: 12 @6858 has 126 MA's), (Start: 14 @6876 has 1 MA's),

Gene: Mikro_18 Start: 7074, Stop: 7259, Start Num: 12
Candidate Starts for Mikro_18:
(Start: 8 @7056 has 15 MA's), (Start: 11 @7071 has 17 MA's), (Start: 12 @7074 has 126 MA's), (Start: 14 @7092 has 1 MA's),

Gene: MoMoMixon_21 Start: 7181, Stop: 7366, Start Num: 12
Candidate Starts for MoMoMixon_21:
(Start: 8 @7163 has 15 MA's), (Start: 11 @7178 has 17 MA's), (Start: 12 @7181 has 126 MA's), (Start: 14 @7199 has 1 MA's),

Gene: Momo_18 Start: 5745, Stop: 5933, Start Num: 11
Candidate Starts for Momo_18:
(Start: 8 @5730 has 15 MA's), (Start: 11 @5745 has 17 MA's), (Start: 12 @5748 has 126 MA's), (Start: 14 @5766 has 1 MA's),

Gene: Morizzled23_18 Start: 5727, Stop: 5912, Start Num: 12
Candidate Starts for Morizzled23_18:
(Start: 8 @5709 has 15 MA's), (Start: 11 @5724 has 17 MA's), (Start: 12 @5727 has 126 MA's), (Start: 14 @5745 has 1 MA's),

Gene: Myrna_7 Start: 2809, Stop: 2979, Start Num: 14
Candidate Starts for Myrna_7:
(6, 2668), (9, 2785), (Start: 14 @2809 has 1 MA's), (15, 2821), (18, 2971),

Gene: Naija_18 Start: 5748, Stop: 5933, Start Num: 12
Candidate Starts for Naija_18:
(Start: 8 @5730 has 15 MA's), (Start: 11 @5745 has 17 MA's), (Start: 12 @5748 has 126 MA's), (Start: 14 @5766 has 1 MA's),

Gene: Napoleon13_18 Start: 5746, Stop: 5931, Start Num: 12
Candidate Starts for Napoleon13_18:
(Start: 8 @5728 has 15 MA's), (Start: 11 @5743 has 17 MA's), (Start: 12 @5746 has 126 MA's), (Start: 14 @5764 has 1 MA's),

Gene: Nappy_21 Start: 7028, Stop: 7216, Start Num: 11
Candidate Starts for Nappy_21:
(Start: 8 @7013 has 15 MA's), (Start: 11 @7028 has 17 MA's), (Start: 12 @7031 has 126 MA's), (Start: 14 @7049 has 1 MA's),

Gene: Naval22_21 Start: 7181, Stop: 7366, Start Num: 12

Candidate Starts for Naval22_21:

(Start: 8 @7163 has 15 MA's), (Start: 11 @7178 has 17 MA's), (Start: 12 @7181 has 126 MA's), (Start: 14 @7199 has 1 MA's),

Gene: NedWong_20 Start: 6858, Stop: 7043, Start Num: 12

Candidate Starts for NedWong_20:

(1, 6534), (Start: 8 @6840 has 15 MA's), (Start: 11 @6855 has 17 MA's), (Start: 12 @6858 has 126 MA's), (Start: 14 @6876 has 1 MA's),

Gene: Ngannou_18 Start: 5724, Stop: 5912, Start Num: 11

Candidate Starts for Ngannou_18:

(Start: 8 @5709 has 15 MA's), (Start: 11 @5724 has 17 MA's), (Start: 12 @5727 has 126 MA's), (Start: 14 @5745 has 1 MA's),

Gene: Nidhogg_21 Start: 7181, Stop: 7366, Start Num: 12

Candidate Starts for Nidhogg_21:

(Start: 8 @7163 has 15 MA's), (Start: 11 @7178 has 17 MA's), (Start: 12 @7181 has 126 MA's), (Start: 14 @7199 has 1 MA's),

Gene: NoodleTree_18 Start: 6075, Stop: 6260, Start Num: 12

Candidate Starts for NoodleTree_18:

(Start: 8 @6057 has 15 MA's), (Start: 11 @6072 has 17 MA's), (Start: 12 @6075 has 126 MA's), (Start: 14 @6093 has 1 MA's),

Gene: Norm_19 Start: 6858, Stop: 7043, Start Num: 12

Candidate Starts for Norm_19:

(1, 6534), (Start: 8 @6840 has 15 MA's), (Start: 11 @6855 has 17 MA's), (Start: 12 @6858 has 126 MA's), (Start: 14 @6876 has 1 MA's),

Gene: NuevoMundo_23 Start: 8183, Stop: 8368, Start Num: 12

Candidate Starts for NuevoMundo_23:

(Start: 8 @8165 has 15 MA's), (Start: 11 @8180 has 17 MA's), (Start: 12 @8183 has 126 MA's), (Start: 14 @8201 has 1 MA's),

Gene: ParkTD_19 Start: 6855, Stop: 7043, Start Num: 11

Candidate Starts for ParkTD_19:

(1, 6534), (Start: 8 @6840 has 15 MA's), (Start: 11 @6855 has 17 MA's), (Start: 12 @6858 has 126 MA's), (Start: 14 @6876 has 1 MA's),

Gene: Patter_18 Start: 5765, Stop: 5950, Start Num: 12

Candidate Starts for Patter_18:

(Start: 8 @5747 has 15 MA's), (Start: 11 @5762 has 17 MA's), (Start: 12 @5765 has 126 MA's), (Start: 14 @5783 has 1 MA's),

Gene: Phabba_7 Start: 2534, Stop: 2728, Start Num: 10

Candidate Starts for Phabba_7:

(Start: 10 @2534 has 1 MA's),

Gene: Phlegm_20 Start: 5748, Stop: 5933, Start Num: 12

Candidate Starts for Phlegm_20:

(Start: 8 @5730 has 15 MA's), (Start: 11 @5745 has 17 MA's), (Start: 12 @5748 has 126 MA's), (Start: 14 @5766 has 1 MA's),

Gene: Phox_19 Start: 7245, Stop: 7448, Start Num: 8

Candidate Starts for Phox_19:

(Start: 8 @7245 has 15 MA's), (Start: 11 @7260 has 17 MA's), (Start: 12 @7263 has 126 MA's), (Start: 14 @7281 has 1 MA's),

Gene: Phusco_18 Start: 5744, Stop: 5929, Start Num: 12

Candidate Starts for Phusco_18:

(Start: 8 @5726 has 15 MA's), (Start: 11 @5741 has 17 MA's), (Start: 12 @5744 has 126 MA's), (Start: 14 @5762 has 1 MA's),

Gene: Pier_21 Start: 6728, Stop: 6931, Start Num: 8

Candidate Starts for Pier_21:

(Start: 8 @6728 has 15 MA's), (Start: 11 @6743 has 17 MA's), (Start: 12 @6746 has 126 MA's), (Start: 14 @6764 has 1 MA's),

Gene: Pio_22 Start: 7662, Stop: 7865, Start Num: 8

Candidate Starts for Pio_22:

(Start: 8 @7662 has 15 MA's), (Start: 11 @7677 has 17 MA's), (Start: 12 @7680 has 126 MA's), (Start: 14 @7698 has 1 MA's),

Gene: Pivoine_18 Start: 5748, Stop: 5933, Start Num: 12

Candidate Starts for Pivoine_18:

(Start: 8 @5730 has 15 MA's), (Start: 11 @5745 has 17 MA's), (Start: 12 @5748 has 126 MA's), (Start: 14 @5766 has 1 MA's),

Gene: Pleione_21 Start: 6858, Stop: 7043, Start Num: 12

Candidate Starts for Pleione_21:

(1, 6534), (Start: 8 @6840 has 15 MA's), (Start: 11 @6855 has 17 MA's), (Start: 12 @6858 has 126 MA's), (Start: 14 @6876 has 1 MA's),

Gene: PurduePete_19 Start: 6858, Stop: 7043, Start Num: 12

Candidate Starts for PurduePete_19:

(1, 6534), (Start: 8 @6840 has 15 MA's), (Start: 11 @6855 has 17 MA's), (Start: 12 @6858 has 126 MA's), (Start: 14 @6876 has 1 MA's),

Gene: QBert_18 Start: 7263, Stop: 7448, Start Num: 12

Candidate Starts for QBert_18:

(Start: 8 @7245 has 15 MA's), (Start: 11 @7260 has 17 MA's), (Start: 12 @7263 has 126 MA's), (Start: 14 @7281 has 1 MA's),

Gene: Quasimodo_18 Start: 6747, Stop: 6932, Start Num: 12

Candidate Starts for Quasimodo_18:

(Start: 8 @6729 has 15 MA's), (Start: 11 @6744 has 17 MA's), (Start: 12 @6747 has 126 MA's), (Start: 14 @6765 has 1 MA's),

Gene: Rabinovish_19 Start: 7533, Stop: 7736, Start Num: 8

Candidate Starts for Rabinovish_19:

(Start: 8 @7533 has 15 MA's), (Start: 11 @7548 has 17 MA's), (Start: 12 @7551 has 126 MA's), (Start: 14 @7569 has 1 MA's),

Gene: Rahel_18 Start: 5744, Stop: 5929, Start Num: 12
Candidate Starts for Rahel_18:
(Start: 8 @5726 has 15 MA's), (Start: 11 @5741 has 17 MA's), (Start: 12 @5744 has 126 MA's), (Start: 14 @5762 has 1 MA's),

Gene: Rizal_18 Start: 5743, Stop: 5928, Start Num: 12
Candidate Starts for Rizal_18:
(Start: 8 @5725 has 15 MA's), (Start: 11 @5740 has 17 MA's), (Start: 12 @5743 has 126 MA's), (Start: 14 @5761 has 1 MA's),

Gene: RoMag_14 Start: 5825, Stop: 6010, Start Num: 12
Candidate Starts for RoMag_14:
(Start: 8 @5807 has 15 MA's), (Start: 11 @5822 has 17 MA's), (Start: 12 @5825 has 126 MA's), (Start: 14 @5843 has 1 MA's),

Gene: Ronan_15 Start: 4674, Stop: 4859, Start Num: 12
Candidate Starts for Ronan_15:
(Start: 8 @4656 has 15 MA's), (Start: 11 @4671 has 17 MA's), (Start: 12 @4674 has 126 MA's), (Start: 14 @4692 has 1 MA's),

Gene: Roots515_19 Start: 6857, Stop: 7042, Start Num: 12
Candidate Starts for Roots515_19:
(1, 6533), (Start: 8 @6839 has 15 MA's), (Start: 11 @6854 has 17 MA's), (Start: 12 @6857 has 126 MA's), (Start: 14 @6875 has 1 MA's),

Gene: Salacia_21 Start: 6858, Stop: 7043, Start Num: 12
Candidate Starts for Salacia_21:
(1, 6534), (Start: 8 @6840 has 15 MA's), (Start: 11 @6855 has 17 MA's), (Start: 12 @6858 has 126 MA's), (Start: 14 @6876 has 1 MA's),

Gene: Sauce_21 Start: 7226, Stop: 7411, Start Num: 12
Candidate Starts for Sauce_21:
(Start: 8 @7208 has 15 MA's), (Start: 11 @7223 has 17 MA's), (Start: 12 @7226 has 126 MA's), (Start: 14 @7244 has 1 MA's),

Gene: ScoobyDoobyDoo_11 Start: 3407, Stop: 3586, Start Num: 13
Candidate Starts for ScoobyDoobyDoo_11:
(2, 3194), (3, 3221), (4, 3227), (5, 3257), (7, 3332), (Start: 13 @3407 has 1 MA's), (16, 3572), (17, 3575),

Gene: ScottMcG_21 Start: 7414, Stop: 7599, Start Num: 12
Candidate Starts for ScottMcG_21:
(1, 7090), (Start: 8 @7396 has 15 MA's), (Start: 11 @7411 has 17 MA's), (Start: 12 @7414 has 126 MA's), (Start: 14 @7432 has 1 MA's),

Gene: Sebata_21 Start: 7446, Stop: 7634, Start Num: 11
Candidate Starts for Sebata_21:
(Start: 8 @7431 has 15 MA's), (Start: 11 @7446 has 17 MA's), (Start: 12 @7449 has 126 MA's), (Start: 14 @7467 has 1 MA's),

Gene: Shaqnato_16 Start: 5679, Stop: 5864, Start Num: 12
Candidate Starts for Shaqnato_16:

(Start: 8 @5661 has 15 MA's), (Start: 11 @5676 has 17 MA's), (Start: 12 @5679 has 126 MA's), (Start: 14 @5697 has 1 MA's),

Gene: Shelob_22 Start: 7987, Stop: 8172, Start Num: 12

Candidate Starts for Shelob_22:

(Start: 8 @7969 has 15 MA's), (Start: 11 @7984 has 17 MA's), (Start: 12 @7987 has 126 MA's), (Start: 14 @8005 has 1 MA's),

Gene: ShiaLabeouf_18 Start: 5744, Stop: 5929, Start Num: 12

Candidate Starts for ShiaLabeouf_18:

(Start: 8 @5726 has 15 MA's), (Start: 11 @5741 has 17 MA's), (Start: 12 @5744 has 126 MA's), (Start: 14 @5762 has 1 MA's),

Gene: Shnickers_18 Start: 5744, Stop: 5929, Start Num: 12

Candidate Starts for Shnickers_18:

(Start: 8 @5726 has 15 MA's), (Start: 11 @5741 has 17 MA's), (Start: 12 @5744 has 126 MA's), (Start: 14 @5762 has 1 MA's),

Gene: Shrimp_19 Start: 6859, Stop: 7047, Start Num: 11

Candidate Starts for Shrimp_19:

(1, 6538), (Start: 8 @6844 has 15 MA's), (Start: 11 @6859 has 17 MA's), (Start: 12 @6862 has 126 MA's), (Start: 14 @6880 has 1 MA's),

Gene: SilverDipper_19 Start: 5748, Stop: 5933, Start Num: 12

Candidate Starts for SilverDipper_19:

(Start: 8 @5730 has 15 MA's), (Start: 11 @5745 has 17 MA's), (Start: 12 @5748 has 126 MA's), (Start: 14 @5766 has 1 MA's),

Gene: SmallFry_18 Start: 5744, Stop: 5929, Start Num: 12

Candidate Starts for SmallFry_18:

(Start: 8 @5726 has 15 MA's), (Start: 11 @5741 has 17 MA's), (Start: 12 @5744 has 126 MA's), (Start: 14 @5762 has 1 MA's),

Gene: Spec_17 Start: 5744, Stop: 5929, Start Num: 12

Candidate Starts for Spec_17:

(Start: 8 @5726 has 15 MA's), (Start: 11 @5741 has 17 MA's), (Start: 12 @5744 has 126 MA's), (Start: 14 @5762 has 1 MA's),

Gene: Specks_23 Start: 7618, Stop: 7803, Start Num: 12

Candidate Starts for Specks_23:

(Start: 8 @7600 has 15 MA's), (Start: 11 @7615 has 17 MA's), (Start: 12 @7618 has 126 MA's), (Start: 14 @7636 has 1 MA's),

Gene: Sprinklers_20 Start: 6588, Stop: 6773, Start Num: 12

Candidate Starts for Sprinklers_20:

(Start: 8 @6570 has 15 MA's), (Start: 11 @6585 has 17 MA's), (Start: 12 @6588 has 126 MA's), (Start: 14 @6606 has 1 MA's),

Gene: Spud_22 Start: 7680, Stop: 7865, Start Num: 12

Candidate Starts for Spud_22:

(Start: 8 @7662 has 15 MA's), (Start: 11 @7677 has 17 MA's), (Start: 12 @7680 has 126 MA's), (Start: 14 @7698 has 1 MA's),

Gene: SrishMeg2525_19 Start: 6858, Stop: 7043, Start Num: 12
Candidate Starts for SrishMeg2525_19:
(1, 6534), (Start: 8 @6840 has 15 MA's), (Start: 11 @6855 has 17 MA's), (Start: 12 @6858 has 126 MA's), (Start: 14 @6876 has 1 MA's),

Gene: StephanieG_20 Start: 6771, Stop: 6956, Start Num: 12
Candidate Starts for StephanieG_20:
(Start: 8 @6753 has 15 MA's), (Start: 11 @6768 has 17 MA's), (Start: 12 @6771 has 126 MA's), (Start: 14 @6789 has 1 MA's),

Gene: StubbySaigey_19 Start: 5748, Stop: 5933, Start Num: 12
Candidate Starts for StubbySaigey_19:
(Start: 8 @5730 has 15 MA's), (Start: 11 @5745 has 17 MA's), (Start: 12 @5748 has 126 MA's), (Start: 14 @5766 has 1 MA's),

Gene: Teardrop_18 Start: 5744, Stop: 5929, Start Num: 12
Candidate Starts for Teardrop_18:
(Start: 8 @5726 has 15 MA's), (Start: 11 @5741 has 17 MA's), (Start: 12 @5744 has 126 MA's), (Start: 14 @5762 has 1 MA's),

Gene: TinyTim_19 Start: 6858, Stop: 7043, Start Num: 12
Candidate Starts for TinyTim_19:
(1, 6534), (Start: 8 @6840 has 15 MA's), (Start: 11 @6855 has 17 MA's), (Start: 12 @6858 has 126 MA's), (Start: 14 @6876 has 1 MA's),

Gene: Tortoise16_17 Start: 5744, Stop: 5929, Start Num: 12
Candidate Starts for Tortoise16_17:
(Start: 8 @5726 has 15 MA's), (Start: 11 @5741 has 17 MA's), (Start: 12 @5744 has 126 MA's), (Start: 14 @5762 has 1 MA's),

Gene: Trinitium_18 Start: 5744, Stop: 5929, Start Num: 12
Candidate Starts for Trinitium_18:
(Start: 8 @5726 has 15 MA's), (Start: 11 @5741 has 17 MA's), (Start: 12 @5744 has 126 MA's), (Start: 14 @5762 has 1 MA's),

Gene: Turret_18 Start: 5727, Stop: 5912, Start Num: 12
Candidate Starts for Turret_18:
(Start: 8 @5709 has 15 MA's), (Start: 11 @5724 has 17 MA's), (Start: 12 @5727 has 126 MA's), (Start: 14 @5745 has 1 MA's),

Gene: Tyke_21 Start: 7156, Stop: 7341, Start Num: 12
Candidate Starts for Tyke_21:
(Start: 8 @7138 has 15 MA's), (Start: 11 @7153 has 17 MA's), (Start: 12 @7156 has 126 MA's), (Start: 14 @7174 has 1 MA's),

Gene: ValleyTerrace_18 Start: 5748, Stop: 5933, Start Num: 12
Candidate Starts for ValleyTerrace_18:
(Start: 8 @5730 has 15 MA's), (Start: 11 @5745 has 17 MA's), (Start: 12 @5748 has 126 MA's), (Start: 14 @5766 has 1 MA's),

Gene: Wally_18 Start: 5745, Stop: 5933, Start Num: 11
Candidate Starts for Wally_18:

(Start: 8 @5730 has 15 MA's), (Start: 11 @5745 has 17 MA's), (Start: 12 @5748 has 126 MA's), (Start: 14 @5766 has 1 MA's),

Gene: Willis_20 Start: 6753, Stop: 6938, Start Num: 12

Candidate Starts for Willis_20:

(Start: 8 @6735 has 15 MA's), (Start: 11 @6750 has 17 MA's), (Start: 12 @6753 has 126 MA's), (Start: 14 @6771 has 1 MA's),

Gene: Yassified_17 Start: 5751, Stop: 5936, Start Num: 12

Candidate Starts for Yassified_17:

(Start: 8 @5733 has 15 MA's), (Start: 11 @5748 has 17 MA's), (Start: 12 @5751 has 126 MA's), (Start: 14 @5769 has 1 MA's),

Gene: YemiJoy2021_20 Start: 6858, Stop: 7043, Start Num: 12

Candidate Starts for YemiJoy2021_20:

(1, 6534), (Start: 8 @6840 has 15 MA's), (Start: 11 @6855 has 17 MA's), (Start: 12 @6858 has 126 MA's), (Start: 14 @6876 has 1 MA's),

Gene: YoungMoneyMata_19 Start: 5791, Stop: 5976, Start Num: 12

Candidate Starts for YoungMoneyMata_19:

(1, 5467), (Start: 8 @5773 has 15 MA's), (Start: 11 @5788 has 17 MA's), (Start: 12 @5791 has 126 MA's), (Start: 14 @5809 has 1 MA's),

Gene: Yucca_19 Start: 6762, Stop: 6965, Start Num: 8

Candidate Starts for Yucca_19:

(1, 6456), (Start: 8 @6762 has 15 MA's), (Start: 11 @6777 has 17 MA's), (Start: 12 @6780 has 126 MA's), (Start: 14 @6798 has 1 MA's),

Gene: Zalkecks_21 Start: 6855, Stop: 7043, Start Num: 11

Candidate Starts for Zalkecks_21:

(1, 6534), (Start: 8 @6840 has 15 MA's), (Start: 11 @6855 has 17 MA's), (Start: 12 @6858 has 126 MA's), (Start: 14 @6876 has 1 MA's),

Gene: Zeenon_22 Start: 6856, Stop: 7044, Start Num: 11

Candidate Starts for Zeenon_22:

(1, 6535), (Start: 8 @6841 has 15 MA's), (Start: 11 @6856 has 17 MA's), (Start: 12 @6859 has 126 MA's), (Start: 14 @6877 has 1 MA's),

Gene: ZygoTaiga_20 Start: 6840, Stop: 7043, Start Num: 8

Candidate Starts for ZygoTaiga_20:

(1, 6534), (Start: 8 @6840 has 15 MA's), (Start: 11 @6855 has 17 MA's), (Start: 12 @6858 has 126 MA's), (Start: 14 @6876 has 1 MA's),