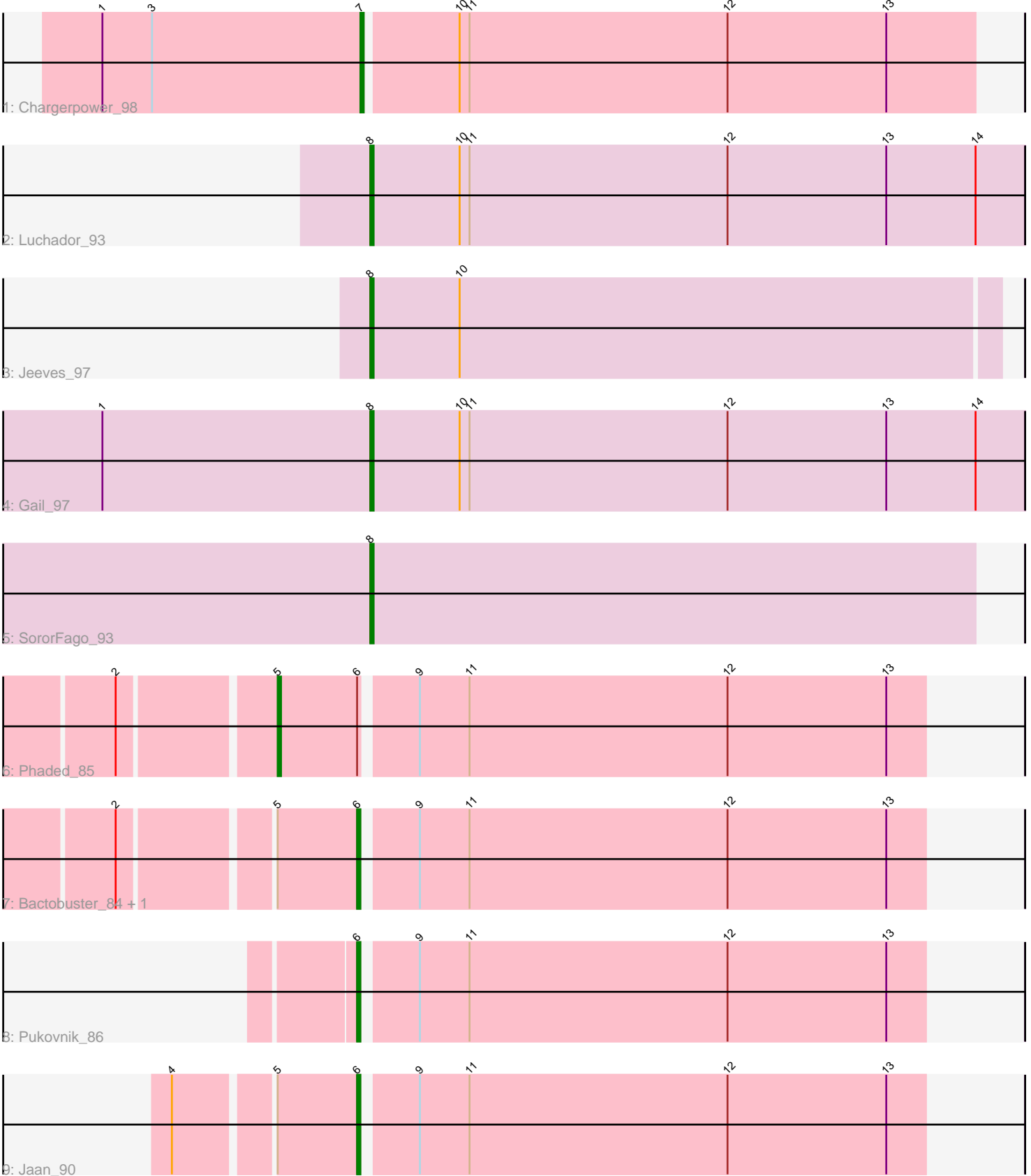


Pham 6533



Note: Tracks are now grouped by subcluster and scaled. Switching in subcluster is indicated by changes in track color. Track scale is now set by default to display the region 30 bp upstream of start 1 to 30 bp downstream of the last possible start. If this default region is judged to be packed too tightly with annotated starts, the track will be further scaled to only show that region of the ORF with annotated starts. This action will be indicated by adding "Zoomed" to the title. For starts, yellow indicates the location of called starts comprised solely of Glimmer/GeneMark auto-annotations, green indicates the location of called starts with at least 1 manual gene annotation.

## Pham 6533 Report

This analysis was run 04/05/24 on database version 557.

Pham number 6533 has 10 members, 1 are drafts.

Phages represented in each track:

- Track 1 : Chargerpower\_98
- Track 2 : Luchador\_93
- Track 3 : Jeeves\_97
- Track 4 : Gail\_97
- Track 5 : SororFago\_93
- Track 6 : Phaded\_85
- Track 7 : Bactobuster\_84, Landor\_89
- Track 8 : Pukovnik\_86
- Track 9 : Jaan\_90

### ***Summary of Final Annotations (See graph section above for start numbers):***

The start number called the most often in the published annotations is 8, it was called in 4 of the 9 non-draft genes in the pham.

Genes that call this "Most Annotated" start:

- Gail\_97, Jeeves\_97, Luchador\_93, SororFago\_93,

Genes that have the "Most Annotated" start but do not call it:

- 

Genes that do not have the "Most Annotated" start:

- Bactobuster\_84, Chargerpower\_98, Jaan\_90, Landor\_89, Phaded\_85, Pukovnik\_86,

### **Summary by start number:**

Start 5:

- Found in 4 of 10 ( 40.0% ) of genes in pham
- Manual Annotations of this start: 1 of 9
- Called 25.0% of time when present
- Phage (with cluster) where this start called: Phaded\_85 (A2),

Start 6:

- Found in 5 of 10 ( 50.0% ) of genes in pham
- Manual Annotations of this start: 3 of 9
- Called 80.0% of time when present
- Phage (with cluster) where this start called: Bactobuster\_84 (A2), Jaan\_90 (A2), Landor\_89 (A2), Pukovnik\_86 (A2),

Start 7:

- Found in 1 of 10 ( 10.0% ) of genes in pham
- Manual Annotations of this start: 1 of 9
- Called 100.0% of time when present
- Phage (with cluster) where this start called: Chargerpower\_98 (A),

Start 8:

- Found in 4 of 10 ( 40.0% ) of genes in pham
- Manual Annotations of this start: 4 of 9
- Called 100.0% of time when present
- Phage (with cluster) where this start called: Gail\_97 (A14), Jeeves\_97 (A14), Luchador\_93 (A14), SororFago\_93 (A14),

### **Summary by clusters:**

There are 3 clusters represented in this pham: A, A14, A2,

Info for manual annotations of cluster A:

- Start number 7 was manually annotated 1 time for cluster A.

Info for manual annotations of cluster A14:

- Start number 8 was manually annotated 4 times for cluster A14.

Info for manual annotations of cluster A2:

- Start number 5 was manually annotated 1 time for cluster A2.
- Start number 6 was manually annotated 3 times for cluster A2.

### **Gene Information:**

Gene: Bactobuster\_84 Start: 49415, Stop: 49248, Start Num: 6

Candidate Starts for Bactobuster\_84:

(2, 49481), (Start: 5 @49439 has 1 MA's), (Start: 6 @49415 has 3 MA's), (9, 49400), (11, 49385), (12, 49307), (13, 49259),

Gene: Chargerpower\_98 Start: 50825, Stop: 50643, Start Num: 7

Candidate Starts for Chargerpower\_98:

(1, 50903), (3, 50888), (Start: 7 @50825 has 1 MA's), (10, 50798), (11, 50795), (12, 50717), (13, 50669),

Gene: Gail\_97 Start: 50817, Stop: 50620, Start Num: 8

Candidate Starts for Gail\_97:

(1, 50898), (Start: 8 @50817 has 4 MA's), (10, 50790), (11, 50787), (12, 50709), (13, 50661), (14, 50634),

Gene: Jaan\_90 Start: 51045, Stop: 50878, Start Num: 6

Candidate Starts for Jaan\_90:

(4, 51096), (Start: 5 @51069 has 1 MA's), (Start: 6 @51045 has 3 MA's), (9, 51030), (11, 51015), (12, 50937), (13, 50889),

Gene: Jeeves\_97 Start: 49618, Stop: 49430, Start Num: 8

Candidate Starts for Jeeves\_97:

(Start: 8 @49618 has 4 MA's), (10, 49591),

Gene: Landor\_89 Start: 50961, Stop: 50794, Start Num: 6

Candidate Starts for Landor\_89:

(2, 51027), (Start: 5 @50985 has 1 MA's), (Start: 6 @50961 has 3 MA's), (9, 50946), (11, 50931), (12, 50853), (13, 50805),

Gene: Luchador\_93 Start: 50531, Stop: 50334, Start Num: 8

Candidate Starts for Luchador\_93:

(Start: 8 @50531 has 4 MA's), (10, 50504), (11, 50501), (12, 50423), (13, 50375), (14, 50348),

Gene: Phaded\_85 Start: 51010, Stop: 50819, Start Num: 5

Candidate Starts for Phaded\_85:

(2, 51052), (Start: 5 @51010 has 1 MA's), (Start: 6 @50986 has 3 MA's), (9, 50971), (11, 50956), (12, 50878), (13, 50830),

Gene: Pukovnik\_86 Start: 50448, Stop: 50281, Start Num: 6

Candidate Starts for Pukovnik\_86:

(Start: 6 @50448 has 3 MA's), (9, 50433), (11, 50418), (12, 50340), (13, 50292),

Gene: SororFago\_93 Start: 50394, Stop: 50212, Start Num: 8

Candidate Starts for SororFago\_93:

(Start: 8 @50394 has 4 MA's),