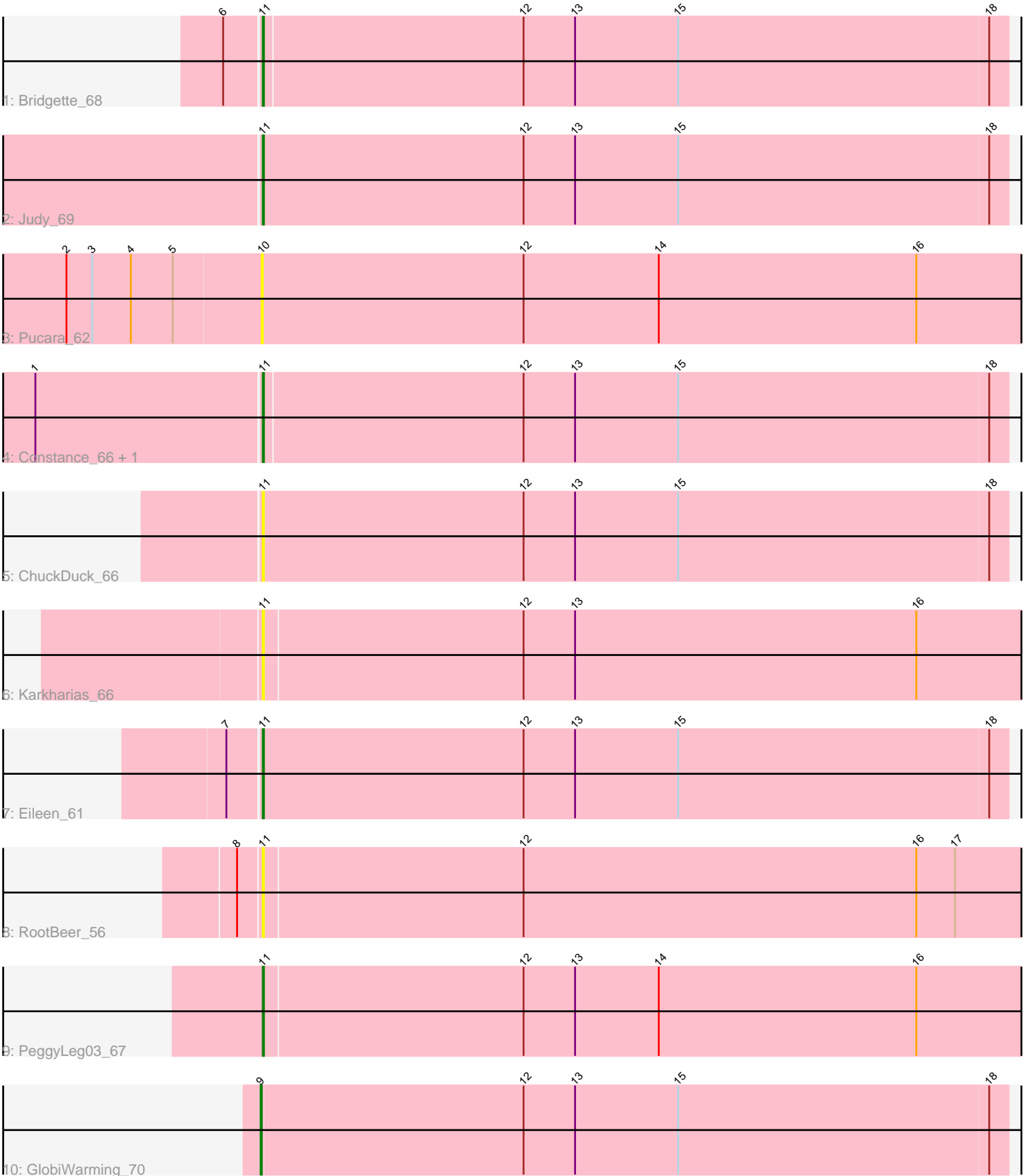


Pham 6712



Note: Tracks are now grouped by subcluster and scaled. Switching in subcluster is indicated by changes in track color. Track scale is now set by default to display the region 30 bp upstream of start 1 to 30 bp downstream of the last possible start. If this default region is judged to be packed too tightly with annotated starts, the track will be further scaled to only show that region of the ORF with annotated starts. This action will be indicated by adding "Zoomed" to the title. For starts, yellow indicates the location of called starts comprised solely of Glimmer/GeneMark auto-annotations, green indicates the location of called starts with at least 1 manual gene annotation.

Pham 6712 Report

This analysis was run 04/05/24 on database version 557.

Pham number 6712 has 11 members, 4 are drafts.

Phages represented in each track:

- Track 1 : Bridgette_68
- Track 2 : Judy_69
- Track 3 : Pucara_62
- Track 4 : Constance_66, Peas_67
- Track 5 : ChuckDuck_66
- Track 6 : Karkharias_66
- Track 7 : Eileen_61
- Track 8 : RootBeer_56
- Track 9 : PeggyLeg03_67
- Track 10 : GlobiWarming_70

Summary of Final Annotations (See graph section above for start numbers):

The start number called the most often in the published annotations is 11, it was called in 6 of the 7 non-draft genes in the pham.

Genes that call this "Most Annotated" start:

- Bridgette_68, ChuckDuck_66, Constance_66, Eileen_61, Judy_69, Karkharias_66, Peas_67, PeggyLeg03_67, RootBeer_56,

Genes that have the "Most Annotated" start but do not call it:

-

Genes that do not have the "Most Annotated" start:

- GlobiWarming_70, Pucara_62,

Summary by start number:

Start 9:

- Found in 1 of 11 (9.1%) of genes in pham
- Manual Annotations of this start: 1 of 7
- Called 100.0% of time when present
- Phage (with cluster) where this start called: GlobiWarming_70 (FA),

Start 10:

- Found in 1 of 11 (9.1%) of genes in pham
- No Manual Annotations of this start.
- Called 100.0% of time when present
- Phage (with cluster) where this start called: Pucara_62 (FA),

Start 11:

- Found in 9 of 11 (81.8%) of genes in pham
- Manual Annotations of this start: 6 of 7
- Called 100.0% of time when present
- Phage (with cluster) where this start called: Bridgette_68 (FA), ChuckDuck_66 (FA), Constance_66 (FA), Eileen_61 (FA), Judy_69 (FA), Karkharias_66 (FA), Peas_67 (FA), PeggyLeg03_67 (FA), RootBeer_56 (FA),

Summary by clusters:

There is one cluster represented in this pham: FA

Info for manual annotations of cluster FA:

- Start number 9 was manually annotated 1 time for cluster FA.
- Start number 11 was manually annotated 6 times for cluster FA.

Gene Information:

Gene: Bridgette_68 Start: 41435, Stop: 42124, Start Num: 11

Candidate Starts for Bridgette_68:

(6, 41402), (Start: 11 @41435 has 6 MA's), (12, 41675), (13, 41723), (15, 41819), (18, 42107),

Gene: ChuckDuck_66 Start: 41142, Stop: 41834, Start Num: 11

Candidate Starts for ChuckDuck_66:

(Start: 11 @41142 has 6 MA's), (12, 41385), (13, 41433), (15, 41529), (18, 41817),

Gene: Constance_66 Start: 41824, Stop: 42513, Start Num: 11

Candidate Starts for Constance_66:

(1, 41617), (Start: 11 @41824 has 6 MA's), (12, 42064), (13, 42112), (15, 42208), (18, 42496),

Gene: Eileen_61 Start: 39257, Stop: 39949, Start Num: 11

Candidate Starts for Eileen_61:

(7, 39227), (Start: 11 @39257 has 6 MA's), (12, 39500), (13, 39548), (15, 39644), (18, 39932),

Gene: GlobiWarming_70 Start: 40938, Stop: 41630, Start Num: 9

Candidate Starts for GlobiWarming_70:

(Start: 9 @40938 has 1 MA's), (12, 41181), (13, 41229), (15, 41325), (18, 41613),

Gene: Judy_69 Start: 41758, Stop: 42450, Start Num: 11

Candidate Starts for Judy_69:

(Start: 11 @41758 has 6 MA's), (12, 42001), (13, 42049), (15, 42145), (18, 42433),

Gene: Karkharias_66 Start: 40785, Stop: 41498, Start Num: 11

Candidate Starts for Karkharias_66:

(Start: 11 @40785 has 6 MA's), (12, 41025), (13, 41073), (16, 41391),

Gene: Peas_67 Start: 42462, Stop: 43151, Start Num: 11

Candidate Starts for Peas_67:

(1, 42255), (Start: 11 @42462 has 6 MA's), (12, 42702), (13, 42750), (15, 42846), (18, 43134),

Gene: PeggyLeg03_67 Start: 41546, Stop: 42259, Start Num: 11

Candidate Starts for PeggyLeg03_67:

(Start: 11 @41546 has 6 MA's), (12, 41786), (13, 41834), (14, 41912), (16, 42152),

Gene: Pucara_62 Start: 40913, Stop: 41629, Start Num: 10

Candidate Starts for Pucara_62:

(2, 40733), (3, 40757), (4, 40793), (5, 40832), (10, 40913), (12, 41156), (14, 41282), (16, 41522),

Gene: RootBeer_56 Start: 37821, Stop: 38534, Start Num: 11

Candidate Starts for RootBeer_56:

(8, 37800), (Start: 11 @37821 has 6 MA's), (12, 38061), (16, 38427), (17, 38463),