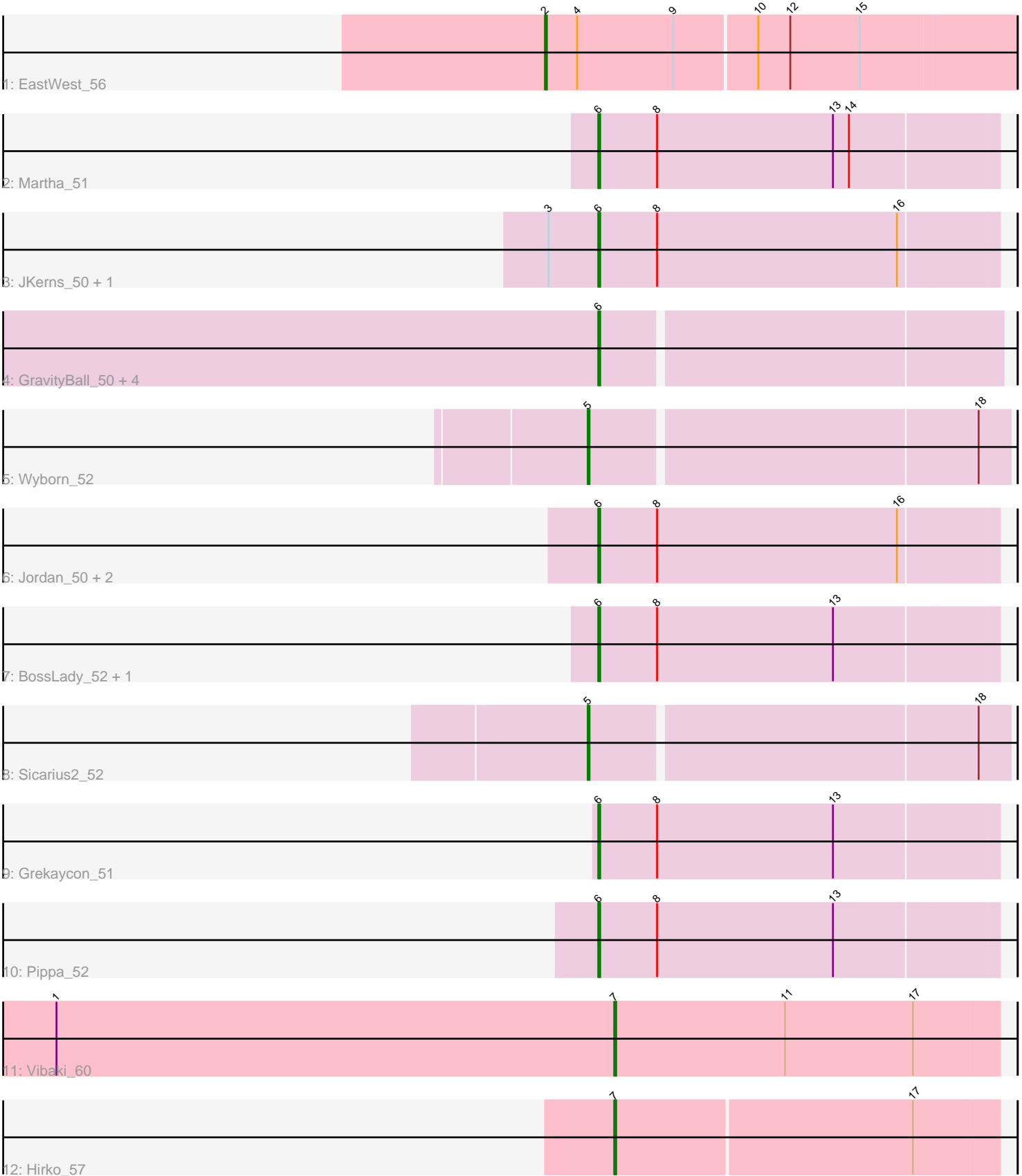


Pham 67640



Note: Tracks are now grouped by subcluster and scaled. Switching in subcluster is indicated by changes in track color. Track scale is now set by default to display the region 30 bp upstream of start 1 to 30 bp downstream of the last possible start. If this default region is judged to be packed too tightly with annotated starts, the track will be further scaled to only show that region of the ORF with annotated starts. This action will be indicated by adding "Zoomed" to the title. For starts, yellow indicates the location of called starts comprised solely of Glimmer/GeneMark auto-annotations, green indicates the location of called starts with at least 1 manual gene annotation.

Pham 67640 Report

This analysis was run 04/05/24 on database version 557.

Pham number 67640 has 20 members, 1 are drafts.

Phages represented in each track:

- Track 1 : EastWest_56
- Track 2 : Martha_51
- Track 3 : JKerns_50, Sonny_50
- Track 4 : GravityBall_50, StevieBAY_50, BarretLemon_50, Timinator_50, LeeroyJ_50
- Track 5 : Wyborn_52
- Track 6 : Jordan_50, Zartrosa_50, Shade_50
- Track 7 : BossLady_52, TaeYoung_52
- Track 8 : Sicarius2_52
- Track 9 : Grekaycon_51
- Track 10 : Pippa_52
- Track 11 : Vibaki_60
- Track 12 : Hirko_57

Summary of Final Annotations (See graph section above for start numbers):

The start number called the most often in the published annotations is 6, it was called in 14 of the 19 non-draft genes in the pham.

Genes that call this "Most Annotated" start:

- BarretLemon_50, BossLady_52, GravityBall_50, Grekaycon_51, JKerns_50, Jordan_50, LeeroyJ_50, Martha_51, Pippa_52, Shade_50, Sonny_50, StevieBAY_50, TaeYoung_52, Timinator_50, Zartrosa_50,

Genes that have the "Most Annotated" start but do not call it:

-

Genes that do not have the "Most Annotated" start:

- EastWest_56, Hirko_57, Sicarius2_52, Vibaki_60, Wyborn_52,

Summary by start number:

Start 2:

- Found in 1 of 20 (5.0%) of genes in pham

- Manual Annotations of this start: 1 of 19
- Called 100.0% of time when present
- Phage (with cluster) where this start called: EastWest_56 (AO),

Start 5:

- Found in 2 of 20 (10.0%) of genes in pham
- Manual Annotations of this start: 2 of 19
- Called 100.0% of time when present
- Phage (with cluster) where this start called: Sicarius2_52 (AO2), Wyborn_52 (AO2),

Start 6:

- Found in 15 of 20 (75.0%) of genes in pham
- Manual Annotations of this start: 14 of 19
- Called 100.0% of time when present
- Phage (with cluster) where this start called: BarretLemon_50 (AO2), BossLady_52 (AO2), GravityBall_50 (AO2), Grekaycon_51 (AO2), JKerns_50 (AO2), Jordan_50 (AO2), LeeroyJ_50 (AO2), Martha_51 (AO2), Pippa_52 (AO2), Shade_50 (AO2), Sonny_50 (AO2), StevieBAY_50 (AO2), TaeYoung_52 (AO2), Timinator_50 (AO2), Zartrosa_50 (AO2),

Start 7:

- Found in 2 of 20 (10.0%) of genes in pham
- Manual Annotations of this start: 2 of 19
- Called 100.0% of time when present
- Phage (with cluster) where this start called: Hirko_57 (FL), Vibaki_60 (FL),

Summary by clusters:

There are 3 clusters represented in this pham: FL, AO2, AO,

Info for manual annotations of cluster AO:

- Start number 2 was manually annotated 1 time for cluster AO.

Info for manual annotations of cluster AO2:

- Start number 5 was manually annotated 2 times for cluster AO2.
- Start number 6 was manually annotated 14 times for cluster AO2.

Info for manual annotations of cluster FL:

- Start number 7 was manually annotated 2 times for cluster FL.

Gene Information:

Gene: BarretLemon_50 Start: 37269, Stop: 37487, Start Num: 6

Candidate Starts for BarretLemon_50:

(Start: 6 @37269 has 14 MA's),

Gene: BossLady_52 Start: 37535, Stop: 37756, Start Num: 6

Candidate Starts for BossLady_52:

(Start: 6 @37535 has 14 MA's), (8, 37568), (13, 37667),

Gene: EastWest_56 Start: 37663, Stop: 37923, Start Num: 2

Candidate Starts for EastWest_56:

(Start: 2 @37663 has 1 MA's), (4, 37681), (9, 37735), (10, 37780), (12, 37798), (15, 37837),

Gene: GravityBall_50 Start: 37365, Stop: 37583, Start Num: 6

Candidate Starts for GravityBall_50:

(Start: 6 @37365 has 14 MA's),

Gene: Grekaycon_51 Start: 37434, Stop: 37655, Start Num: 6

Candidate Starts for Grekaycon_51:

(Start: 6 @37434 has 14 MA's), (8, 37467), (13, 37566),

Gene: Hirko_57 Start: 40976, Stop: 41188, Start Num: 7

Candidate Starts for Hirko_57:

(Start: 7 @40976 has 2 MA's), (17, 41141),

Gene: JKerns_50 Start: 37523, Stop: 37744, Start Num: 6

Candidate Starts for JKerns_50:

(3, 37496), (Start: 6 @37523 has 14 MA's), (8, 37556), (16, 37691),

Gene: Jordan_50 Start: 37326, Stop: 37547, Start Num: 6

Candidate Starts for Jordan_50:

(Start: 6 @37326 has 14 MA's), (8, 37359), (16, 37494),

Gene: LeeroyJ_50 Start: 37298, Stop: 37516, Start Num: 6

Candidate Starts for LeeroyJ_50:

(Start: 6 @37298 has 14 MA's),

Gene: Martha_51 Start: 37548, Stop: 37769, Start Num: 6

Candidate Starts for Martha_51:

(Start: 6 @37548 has 14 MA's), (8, 37581), (13, 37680), (14, 37689),

Gene: Pippa_52 Start: 37798, Stop: 38019, Start Num: 6

Candidate Starts for Pippa_52:

(Start: 6 @37798 has 14 MA's), (8, 37831), (13, 37930),

Gene: Shade_50 Start: 37251, Stop: 37472, Start Num: 6

Candidate Starts for Shade_50:

(Start: 6 @37251 has 14 MA's), (8, 37284), (16, 37419),

Gene: Sicarius2_52 Start: 36462, Stop: 36689, Start Num: 5

Candidate Starts for Sicarius2_52:

(Start: 5 @36462 has 2 MA's), (18, 36672),

Gene: Sonny_50 Start: 37362, Stop: 37583, Start Num: 6

Candidate Starts for Sonny_50:

(3, 37335), (Start: 6 @37362 has 14 MA's), (8, 37395), (16, 37530),

Gene: StevieBAY_50 Start: 37362, Stop: 37580, Start Num: 6

Candidate Starts for StevieBAY_50:

(Start: 6 @37362 has 14 MA's),

Gene: TaeYoung_52 Start: 37503, Stop: 37724, Start Num: 6

Candidate Starts for TaeYoung_52:

(Start: 6 @37503 has 14 MA's), (8, 37536), (13, 37635),

Gene: Timinator_50 Start: 37229, Stop: 37447, Start Num: 6

Candidate Starts for Timinator_50:

(Start: 6 @37229 has 14 MA's),

Gene: Vibaki_60 Start: 41157, Stop: 41372, Start Num: 7

Candidate Starts for Vibaki_60:

(1, 40845), (Start: 7 @41157 has 2 MA's), (11, 41253), (17, 41325),

Gene: Wyborn_52 Start: 37442, Stop: 37669, Start Num: 5

Candidate Starts for Wyborn_52:

(Start: 5 @37442 has 2 MA's), (18, 37652),

Gene: Zartrosa_50 Start: 37302, Stop: 37523, Start Num: 6

Candidate Starts for Zartrosa_50:

(Start: 6 @37302 has 14 MA's), (8, 37335), (16, 37470),