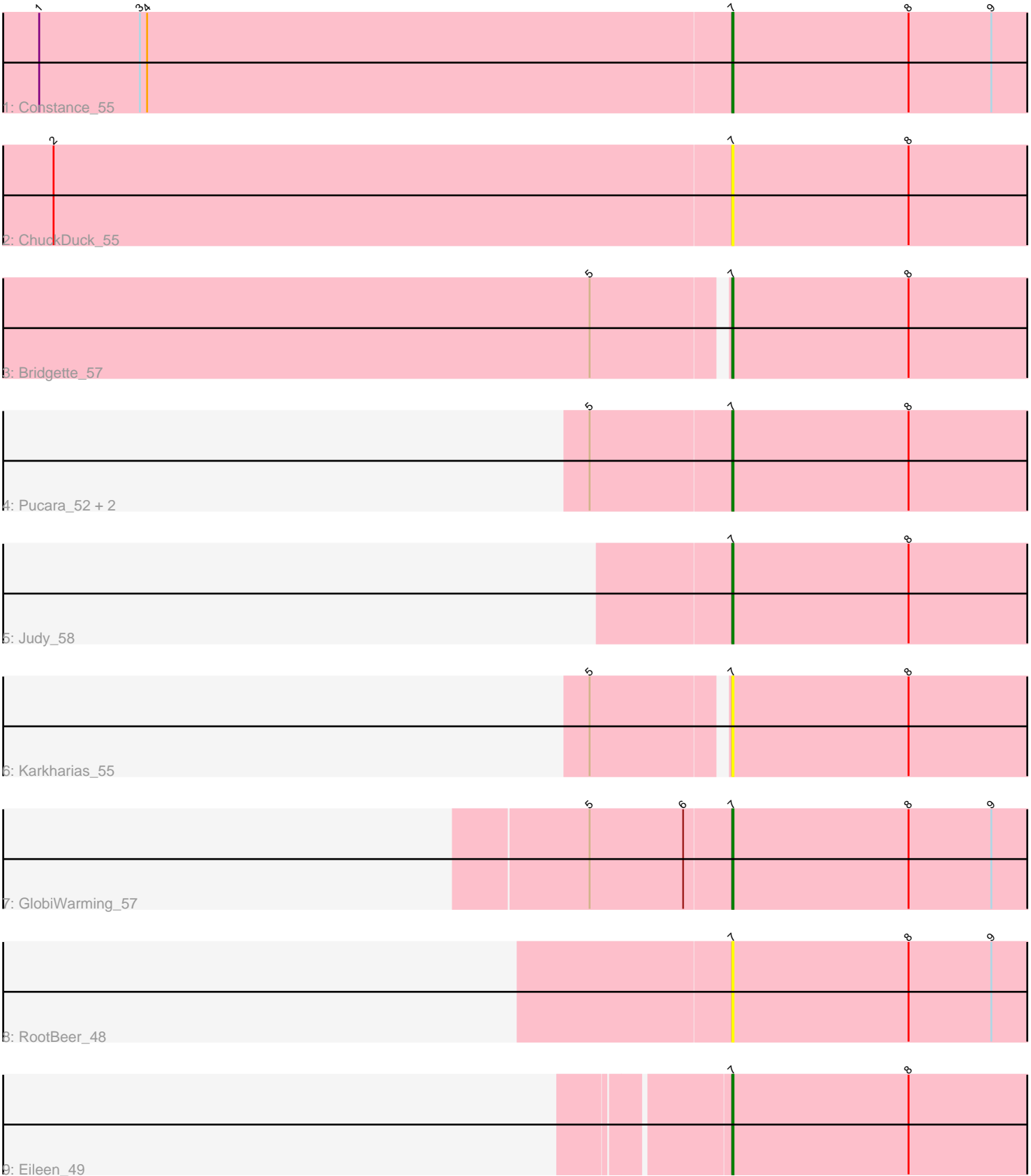


Pham 7130



Note: Tracks are now grouped by subcluster and scaled. Switching in subcluster is indicated by changes in track color. Track scale is now set by default to display the region 30 bp upstream of start 1 to 30 bp downstream of the last possible start. If this default region is judged to be packed too tightly with annotated starts, the track will be further scaled to only show that region of the ORF with annotated starts. This action will be indicated by adding "Zoomed" to the title. For starts, yellow indicates the location of called starts comprised solely of Glimmer/GeneMark auto-annotations, green indicates the location of called starts with at least 1 manual gene annotation.

Pham 7130 Report

This analysis was run 04/28/24 on database version 559.

Pham number 7130 has 11 members, 4 are drafts.

Phages represented in each track:

- Track 1 : Constance_55
- Track 2 : ChuckDuck_55
- Track 3 : Bridgette_57
- Track 4 : Pucara_52, PeggyLeg03_55, Peas_54
- Track 5 : Judy_58
- Track 6 : Karkharias_55
- Track 7 : GlobiWarming_57
- Track 8 : RootBeer_48
- Track 9 : Eileen_49

Summary of Final Annotations (See graph section above for start numbers):

The start number called the most often in the published annotations is 7, it was called in 7 of the 7 non-draft genes in the pham.

Genes that call this "Most Annotated" start:

- Bridgette_57, ChuckDuck_55, Constance_55, Eileen_49, GlobiWarming_57, Judy_58, Karkharias_55, Peas_54, PeggyLeg03_55, Pucara_52, RootBeer_48,

Genes that have the "Most Annotated" start but do not call it:

-

Genes that do not have the "Most Annotated" start:

-

Summary by start number:

Start 7:

- Found in 11 of 11 (100.0%) of genes in pham
- Manual Annotations of this start: 7 of 7
- Called 100.0% of time when present
- Phage (with cluster) where this start called: Bridgette_57 (FA), ChuckDuck_55 (FA), Constance_55 (FA), Eileen_49 (FA), GlobiWarming_57 (FA), Judy_58 (FA), Karkharias_55 (FA), Peas_54 (FA), PeggyLeg03_55 (FA), Pucara_52 (FA),

RootBeer_48 (FA),

Summary by clusters:

There is one cluster represented in this pham: FA

Info for manual annotations of cluster FA:

- Start number 7 was manually annotated 7 times for cluster FA.

Gene Information:

Gene: Bridgette_57 Start: 35900, Stop: 36190, Start Num: 7

Candidate Starts for Bridgette_57:

(5, 35795), (Start: 7 @35900 has 7 MA's), (8, 36047),

Gene: ChuckDuck_55 Start: 35640, Stop: 35930, Start Num: 7

Candidate Starts for ChuckDuck_55:

(2, 35076), (Start: 7 @35640 has 7 MA's), (8, 35787),

Gene: Constance_55 Start: 36217, Stop: 36507, Start Num: 7

Candidate Starts for Constance_55:

(1, 35641), (3, 35725), (4, 35731), (Start: 7 @36217 has 7 MA's), (8, 36364), (9, 36433),

Gene: Eileen_49 Start: 32922, Stop: 33212, Start Num: 7

Candidate Starts for Eileen_49:

(Start: 7 @32922 has 7 MA's), (8, 33069),

Gene: GlobiWarming_57 Start: 35263, Stop: 35553, Start Num: 7

Candidate Starts for GlobiWarming_57:

(5, 35146), (6, 35224), (Start: 7 @35263 has 7 MA's), (8, 35410), (9, 35479),

Gene: Judy_58 Start: 36330, Stop: 36620, Start Num: 7

Candidate Starts for Judy_58:

(Start: 7 @36330 has 7 MA's), (8, 36477),

Gene: Karkharias_55 Start: 35073, Stop: 35363, Start Num: 7

Candidate Starts for Karkharias_55:

(5, 34968), (Start: 7 @35073 has 7 MA's), (8, 35220),

Gene: Peas_54 Start: 36814, Stop: 37104, Start Num: 7

Candidate Starts for Peas_54:

(5, 36697), (Start: 7 @36814 has 7 MA's), (8, 36961),

Gene: PeggyLeg03_55 Start: 35554, Stop: 35844, Start Num: 7

Candidate Starts for PeggyLeg03_55:

(5, 35437), (Start: 7 @35554 has 7 MA's), (8, 35701),

Gene: Pucara_52 Start: 35159, Stop: 35449, Start Num: 7

Candidate Starts for Pucara_52:

(5, 35042), (Start: 7 @35159 has 7 MA's), (8, 35306),

Gene: RootBeer_48 Start: 32407, Stop: 32697, Start Num: 7
Candidate Starts for RootBeer_48:
(Start: 7 @32407 has 7 MA's), (8, 32554), (9, 32623),