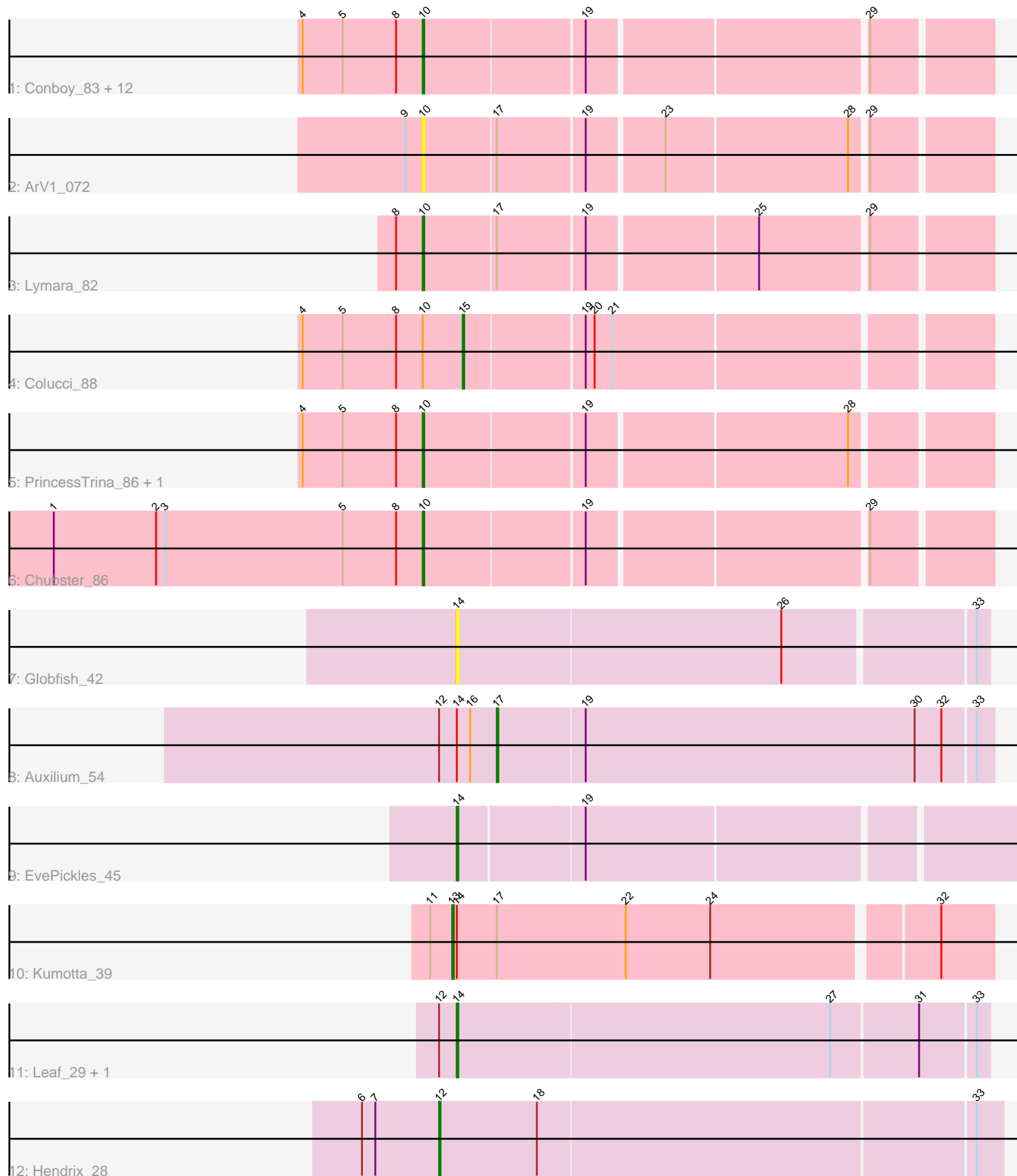


# Pham 86319



Note: Tracks are now grouped by subcluster and scaled. Switching in subcluster is indicated by changes in track color. Track scale is now set by default to display the region 30 bp upstream of start 1 to 30 bp downstream of the last possible start. If this default region is judged to be packed too tightly with annotated starts, the track will be further scaled to only show that region of the ORF with annotated starts. This action will be indicated by adding "Zoomed" to the title. For starts, yellow indicates the location of called starts comprised solely of Glimmer/GeneMark auto-annotations, green indicates the location of called starts with at least 1 manual gene annotation.

## Pham 86319 Report

This analysis was run 04/28/24 on database version 559.

Pham number 86319 has 26 members, 4 are drafts.

Phages represented in each track:

- Track 1 : Conboy\_83, Chocolat\_85, Kabreeze\_85, MoyaNatalis\_84, Scavito\_86, Chipper1996\_860, Mordred\_85, JaNo\_84, JayCookie\_85, Linus\_85, Tophat\_86, HumptyDumpty\_85, RosiePosie\_85
- Track 2 : ArV1\_072
- Track 3 : Lymara\_82
- Track 4 : Colucci\_88
- Track 5 : PrincessTrina\_86, EdgarPoe\_84
- Track 6 : Chubster\_86
- Track 7 : Globfish\_42
- Track 8 : Auxilium\_54
- Track 9 : EvePickles\_45
- Track 10 : Kumotta\_39
- Track 11 : Leaf\_29, Dewdrop\_29
- Track 12 : Hendrix\_28

### ***Summary of Final Annotations (See graph section above for start numbers):***

The start number called the most often in the published annotations is 10, it was called in 15 of the 22 non-draft genes in the pham.

Genes that call this "Most Annotated" start:

- ArV1\_072, Chipper1996\_860, Chocolat\_85, Chubster\_86, Conboy\_83, EdgarPoe\_84, HumptyDumpty\_85, JaNo\_84, JayCookie\_85, Kabreeze\_85, Linus\_85, Lymara\_82, Mordred\_85, MoyaNatalis\_84, PrincessTrina\_86, RosiePosie\_85, Scavito\_86, Tophat\_86,

Genes that have the "Most Annotated" start but do not call it:

- Colucci\_88,

Genes that do not have the "Most Annotated" start:

- Auxilium\_54, Dewdrop\_29, EvePickles\_45, Globfish\_42, Hendrix\_28, Kumotta\_39, Leaf\_29,

### **Summary by start number:**

Start 10:

- Found in 19 of 26 ( 73.1% ) of genes in pham
- Manual Annotations of this start: 15 of 22
- Called 94.7% of time when present
- Phage (with cluster) where this start called: ArV1\_072 (AR), Chipper1996\_860 (AR), Chocolat\_85 (AR), Chubster\_86 (AR), Conboy\_83 (AR), EdgarPoe\_84 (AR), HumptyDumpty\_85 (AR), JaNo\_84 (AR), JayCookie\_85 (AR), Kabreeze\_85 (AR), Linus\_85 (AR), Lymara\_82 (AR), Mordred\_85 (AR), MoyaNatalis\_84 (AR), PrincessTrina\_86 (AR), RosiePosie\_85 (AR), Scavito\_86 (AR), Tophat\_86 (AR),

Start 12:

- Found in 4 of 26 ( 15.4% ) of genes in pham
- Manual Annotations of this start: 1 of 22
- Called 25.0% of time when present
- Phage (with cluster) where this start called: Hendrix\_28 (GC),

Start 13:

- Found in 1 of 26 ( 3.8% ) of genes in pham
- Manual Annotations of this start: 1 of 22
- Called 100.0% of time when present
- Phage (with cluster) where this start called: Kumotta\_39 (FB),

Start 14:

- Found in 6 of 26 ( 23.1% ) of genes in pham
- Manual Annotations of this start: 3 of 22
- Called 66.7% of time when present
- Phage (with cluster) where this start called: Dewdrop\_29 (GC), EvePickles\_45 (AY), Globfish\_42 (AY), Leaf\_29 (GC),

Start 15:

- Found in 1 of 26 ( 3.8% ) of genes in pham
- Manual Annotations of this start: 1 of 22
- Called 100.0% of time when present
- Phage (with cluster) where this start called: Colucci\_88 (AR),

Start 17:

- Found in 4 of 26 ( 15.4% ) of genes in pham
- Manual Annotations of this start: 1 of 22
- Called 25.0% of time when present
- Phage (with cluster) where this start called: Auxilium\_54 (AY),

### **Summary by clusters:**

There are 4 clusters represented in this pham: AY, FB, AR, GC,

Info for manual annotations of cluster AR:

- Start number 10 was manually annotated 15 times for cluster AR.
- Start number 15 was manually annotated 1 time for cluster AR.

Info for manual annotations of cluster AY:

- Start number 14 was manually annotated 1 time for cluster AY.
- Start number 17 was manually annotated 1 time for cluster AY.

Info for manual annotations of cluster FB:

- Start number 13 was manually annotated 1 time for cluster FB.

Info for manual annotations of cluster GC:

- Start number 12 was manually annotated 1 time for cluster GC.
- Start number 14 was manually annotated 2 times for cluster GC.

### **Gene Information:**

Gene: ArV1\_072 Start: 55543, Stop: 55902, Start Num: 10

Candidate Starts for ArV1\_072:

(9, 55531), (Start: 10 @55543 has 15 MA's), (Start: 17 @55591 has 1 MA's), (19, 55648), (23, 55696), (28, 55816), (29, 55825),

Gene: Auxilium\_54 Start: 31211, Stop: 31540, Start Num: 17

Candidate Starts for Auxilium\_54:

(Start: 12 @31172 has 1 MA's), (Start: 14 @31184 has 3 MA's), (16, 31193), (Start: 17 @31211 has 1 MA's), (19, 31268), (30, 31490), (32, 31508), (33, 31529),

Gene: Chipper1996\_860 Start: 57178, Stop: 57537, Start Num: 10

Candidate Starts for Chipper1996\_860:

(4, 57097), (5, 57124), (8, 57160), (Start: 10 @57178 has 15 MA's), (19, 57283), (29, 57460),

Gene: Chocolat\_85 Start: 56885, Stop: 57244, Start Num: 10

Candidate Starts for Chocolat\_85:

(4, 56804), (5, 56831), (8, 56867), (Start: 10 @56885 has 15 MA's), (19, 56990), (29, 57167),

Gene: Chubster\_86 Start: 57534, Stop: 57893, Start Num: 10

Candidate Starts for Chubster\_86:

(1, 57285), (2, 57354), (3, 57360), (5, 57480), (8, 57516), (Start: 10 @57534 has 15 MA's), (19, 57639), (29, 57816),

Gene: Colucci\_88 Start: 57566, Stop: 57904, Start Num: 15

Candidate Starts for Colucci\_88:

(4, 57458), (5, 57485), (8, 57521), (Start: 10 @57539 has 15 MA's), (Start: 15 @57566 has 1 MA's), (19, 57644), (20, 57650), (21, 57662),

Gene: Conboy\_83 Start: 56634, Stop: 56993, Start Num: 10

Candidate Starts for Conboy\_83:

(4, 56553), (5, 56580), (8, 56616), (Start: 10 @56634 has 15 MA's), (19, 56739), (29, 56916),

Gene: Dewdrop\_29 Start: 11945, Stop: 12295, Start Num: 14

Candidate Starts for Dewdrop\_29:

(Start: 12 @11933 has 1 MA's), (Start: 14 @11945 has 3 MA's), (27, 12194), (31, 12251), (33, 12287),

Gene: EdgarPoe\_84 Start: 57042, Stop: 57401, Start Num: 10

Candidate Starts for EdgarPoe\_84:

(4, 56961), (5, 56988), (8, 57024), (Start: 10 @57042 has 15 MA's), (19, 57147), (28, 57315),

Gene: EvePickles\_45 Start: 30673, Stop: 31053, Start Num: 14

Candidate Starts for EvePickles\_45:  
(Start: 14 @30673 has 3 MA's), (19, 30754),

Gene: Globfish\_42 Start: 28195, Stop: 27848, Start Num: 14  
Candidate Starts for Globfish\_42:  
(Start: 14 @28195 has 3 MA's), (26, 27979), (33, 27856),

Gene: Hendrix\_28 Start: 12396, Stop: 12767, Start Num: 12  
Candidate Starts for Hendrix\_28:  
(6, 12345), (7, 12354), (Start: 12 @12396 has 1 MA's), (18, 12462), (33, 12750),

Gene: HumptyDumpty\_85 Start: 56845, Stop: 57204, Start Num: 10  
Candidate Starts for HumptyDumpty\_85:  
(4, 56764), (5, 56791), (8, 56827), (Start: 10 @56845 has 15 MA's), (19, 56950), (29, 57127),

Gene: JaNo\_84 Start: 56816, Stop: 57175, Start Num: 10  
Candidate Starts for JaNo\_84:  
(4, 56735), (5, 56762), (8, 56798), (Start: 10 @56816 has 15 MA's), (19, 56921), (29, 57098),

Gene: JayCookie\_85 Start: 57378, Stop: 57737, Start Num: 10  
Candidate Starts for JayCookie\_85:  
(4, 57297), (5, 57324), (8, 57360), (Start: 10 @57378 has 15 MA's), (19, 57483), (29, 57660),

Gene: Kabreeze\_85 Start: 56902, Stop: 57261, Start Num: 10  
Candidate Starts for Kabreeze\_85:  
(4, 56821), (5, 56848), (8, 56884), (Start: 10 @56902 has 15 MA's), (19, 57007), (29, 57184),

Gene: Kumotta\_39 Start: 27591, Stop: 27944, Start Num: 13  
Candidate Starts for Kumotta\_39:  
(11, 27576), (Start: 13 @27591 has 1 MA's), (Start: 14 @27594 has 3 MA's), (Start: 17 @27621 has 1 MA's), (22, 27708), (24, 27765), (32, 27909),

Gene: Leaf\_29 Start: 11945, Stop: 12295, Start Num: 14  
Candidate Starts for Leaf\_29:  
(Start: 12 @11933 has 1 MA's), (Start: 14 @11945 has 3 MA's), (27, 12194), (31, 12251), (33, 12287),

Gene: Linus\_85 Start: 57350, Stop: 57709, Start Num: 10  
Candidate Starts for Linus\_85:  
(4, 57269), (5, 57296), (8, 57332), (Start: 10 @57350 has 15 MA's), (19, 57455), (29, 57632),

Gene: Lymara\_82 Start: 55871, Stop: 56230, Start Num: 10  
Candidate Starts for Lymara\_82:  
(8, 55853), (Start: 10 @55871 has 15 MA's), (Start: 17 @55919 has 1 MA's), (19, 55976), (25, 56084), (29, 56153),

Gene: Mordred\_85 Start: 56941, Stop: 57300, Start Num: 10  
Candidate Starts for Mordred\_85:  
(4, 56860), (5, 56887), (8, 56923), (Start: 10 @56941 has 15 MA's), (19, 57046), (29, 57223),

Gene: MoyaNatalis\_84 Start: 56824, Stop: 57183, Start Num: 10  
Candidate Starts for MoyaNatalis\_84:  
(4, 56743), (5, 56770), (8, 56806), (Start: 10 @56824 has 15 MA's), (19, 56929), (29, 57106),

Gene: PrincessTrina\_86 Start: 57126, Stop: 57485, Start Num: 10

Candidate Starts for PrincessTrina\_86:

(4, 57045), (5, 57072), (8, 57108), (Start: 10 @57126 has 15 MA's), (19, 57231), (28, 57399),

Gene: RosiePosie\_85 Start: 56997, Stop: 57356, Start Num: 10

Candidate Starts for RosiePosie\_85:

(4, 56916), (5, 56943), (8, 56979), (Start: 10 @56997 has 15 MA's), (19, 57102), (29, 57279),

Gene: Scavito\_86 Start: 56990, Stop: 57349, Start Num: 10

Candidate Starts for Scavito\_86:

(4, 56909), (5, 56936), (8, 56972), (Start: 10 @56990 has 15 MA's), (19, 57095), (29, 57272),

Gene: Tophat\_86 Start: 57179, Stop: 57538, Start Num: 10

Candidate Starts for Tophat\_86:

(4, 57098), (5, 57125), (8, 57161), (Start: 10 @57179 has 15 MA's), (19, 57284), (29, 57461),