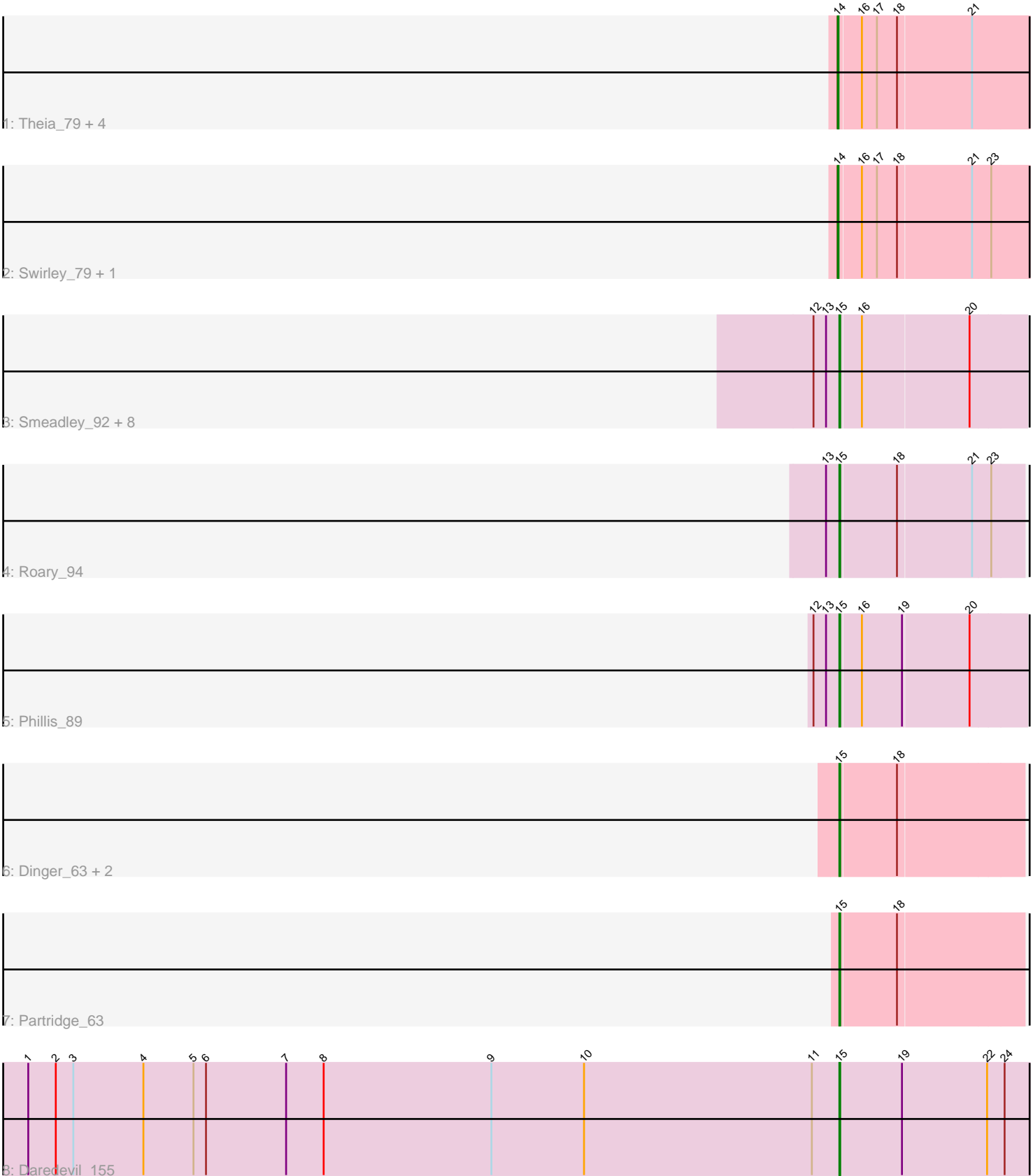


Pham 86480



Note: Tracks are now grouped by subcluster and scaled. Switching in subcluster is indicated by changes in track color. Track scale is now set by default to display the region 30 bp upstream of start 1 to 30 bp downstream of the last possible start. If this default region is judged to be packed too tightly with annotated starts, the track will be further scaled to only show that region of the ORF with annotated starts. This action will be indicated by adding "Zoomed" to the title. For starts, yellow indicates the location of called starts comprised solely of Glimmer/GeneMark auto-annotations, green indicates the location of called starts with at least 1 manual gene annotation.

Pham 86480 Report

This analysis was run 04/28/24 on database version 559.

Pham number 86480 has 23 members, 0 are drafts.

Phages represented in each track:

- Track 1 : Theia_79, Cuco_78, Dublin_79, Coog_76, Midas2_76
- Track 2 : Swirley_79, MarysWell_79
- Track 3 : Smeadley_92, Expelliarmus_89, Groundhog_89, Saintus_87, Stephig9_93, Astro_91, Dixon_91, NearlyHeadless_93, Danforth_93
- Track 4 : Roary_94
- Track 5 : Phillis_89
- Track 6 : Dinger_63, Takoda_64, AngryOrchard_61
- Track 7 : Partridge_63
- Track 8 : Daredevil_155

Summary of Final Annotations (See graph section above for start numbers):

The start number called the most often in the published annotations is 15, it was called in 16 of the 23 non-draft genes in the pham.

Genes that call this "Most Annotated" start:

- AngryOrchard_61, Astro_91, Danforth_93, Daredevil_155, Dinger_63, Dixon_91, Expelliarmus_89, Groundhog_89, NearlyHeadless_93, Partridge_63, Phillis_89, Roary_94, Saintus_87, Smeadley_92, Stephig9_93, Takoda_64,

Genes that have the "Most Annotated" start but do not call it:

-

Genes that do not have the "Most Annotated" start:

- Coog_76, Cuco_78, Dublin_79, MarysWell_79, Midas2_76, Swirley_79, Theia_79,

Summary by start number:

Start 14:

- Found in 7 of 23 (30.4%) of genes in pham
- Manual Annotations of this start: 7 of 23
- Called 100.0% of time when present
- Phage (with cluster) where this start called: Coog_76 (A5), Cuco_78 (A5), Dublin_79 (A5), MarysWell_79 (A5), Midas2_76 (A5), Swirley_79 (A5), Theia_79 (A5),

Start 15:

- Found in 16 of 23 (69.6%) of genes in pham
- Manual Annotations of this start: 16 of 23
- Called 100.0% of time when present
- Phage (with cluster) where this start called: AngryOrchard_61 (CA), Astro_91 (A8), Danforth_93 (A8), Daredevil_155 (DL), Dinger_63 (CA), Dixon_91 (A8), Expelliarmus_89 (A8), Groundhog_89 (A8), NearlyHeadless_93 (A8), Partridge_63 (CA), Phillis_89 (A8), Roary_94 (A8), Saintus_87 (A8), Smeadley_92 (A8), Stephig9_93 (A8), Takoda_64 (CA),

Summary by clusters:

There are 4 clusters represented in this pham: A8, CA, A5, DL,

Info for manual annotations of cluster A5:

- Start number 14 was manually annotated 7 times for cluster A5.

Info for manual annotations of cluster A8:

- Start number 15 was manually annotated 11 times for cluster A8.

Info for manual annotations of cluster CA:

- Start number 15 was manually annotated 4 times for cluster CA.

Info for manual annotations of cluster DL:

- Start number 15 was manually annotated 1 time for cluster DL.

Gene Information:

Gene: AngryOrchard_61 Start: 42541, Stop: 42329, Start Num: 15

Candidate Starts for AngryOrchard_61:

(Start: 15 @42541 has 16 MA's), (18, 42475),

Gene: Astro_91 Start: 48091, Stop: 47876, Start Num: 15

Candidate Starts for Astro_91:

(12, 48121), (13, 48106), (Start: 15 @48091 has 16 MA's), (16, 48067), (20, 47941),

Gene: Coog_76 Start: 46626, Stop: 46408, Start Num: 14

Candidate Starts for Coog_76:

(Start: 14 @46626 has 7 MA's), (16, 46602), (17, 46584), (18, 46560), (21, 46473),

Gene: Cuco_78 Start: 46486, Stop: 46268, Start Num: 14

Candidate Starts for Cuco_78:

(Start: 14 @46486 has 7 MA's), (16, 46462), (17, 46444), (18, 46420), (21, 46333),

Gene: Danforth_93 Start: 48245, Stop: 48030, Start Num: 15

Candidate Starts for Danforth_93:

(12, 48275), (13, 48260), (Start: 15 @48245 has 16 MA's), (16, 48221), (20, 48095),

Gene: Daredevil_155 Start: 84384, Stop: 84151, Start Num: 15

Candidate Starts for Daredevil_155:

(1, 85356), (2, 85323), (3, 85302), (4, 85218), (5, 85158), (6, 85143), (7, 85047), (8, 85002), (9, 84801), (10, 84690), (11, 84417), (Start: 15 @84384 has 16 MA's), (19, 84309), (22, 84207), (24, 84186),

Gene: Dinger_63 Start: 42559, Stop: 42347, Start Num: 15

Candidate Starts for Dinger_63:

(Start: 15 @42559 has 16 MA's), (18, 42493),

Gene: Dixon_91 Start: 47650, Stop: 47435, Start Num: 15

Candidate Starts for Dixon_91:

(12, 47680), (13, 47665), (Start: 15 @47650 has 16 MA's), (16, 47626), (20, 47500),

Gene: Dublin_79 Start: 46758, Stop: 46540, Start Num: 14

Candidate Starts for Dublin_79:

(Start: 14 @46758 has 7 MA's), (16, 46734), (17, 46716), (18, 46692), (21, 46605),

Gene: Expelliarmus_89 Start: 47864, Stop: 47649, Start Num: 15

Candidate Starts for Expelliarmus_89:

(12, 47894), (13, 47879), (Start: 15 @47864 has 16 MA's), (16, 47840), (20, 47714),

Gene: Groundhog_89 Start: 47920, Stop: 47705, Start Num: 15

Candidate Starts for Groundhog_89:

(12, 47950), (13, 47935), (Start: 15 @47920 has 16 MA's), (16, 47896), (20, 47770),

Gene: MarysWell_79 Start: 47001, Stop: 46783, Start Num: 14

Candidate Starts for MarysWell_79:

(Start: 14 @47001 has 7 MA's), (16, 46977), (17, 46959), (18, 46935), (21, 46848), (23, 46827),

Gene: Midas2_76 Start: 46626, Stop: 46408, Start Num: 14

Candidate Starts for Midas2_76:

(Start: 14 @46626 has 7 MA's), (16, 46602), (17, 46584), (18, 46560), (21, 46473),

Gene: NearlyHeadless_93 Start: 47982, Stop: 47767, Start Num: 15

Candidate Starts for NearlyHeadless_93:

(12, 48012), (13, 47997), (Start: 15 @47982 has 16 MA's), (16, 47958), (20, 47832),

Gene: Partridge_63 Start: 42713, Stop: 42501, Start Num: 15

Candidate Starts for Partridge_63:

(Start: 15 @42713 has 16 MA's), (18, 42647),

Gene: Phillis_89 Start: 46995, Stop: 46780, Start Num: 15

Candidate Starts for Phillis_89:

(12, 47025), (13, 47010), (Start: 15 @46995 has 16 MA's), (16, 46971), (19, 46923), (20, 46845),

Gene: Roary_94 Start: 48119, Stop: 47907, Start Num: 15

Candidate Starts for Roary_94:

(13, 48134), (Start: 15 @48119 has 16 MA's), (18, 48053), (21, 47966), (23, 47945),

Gene: Saintus_87 Start: 44847, Stop: 44632, Start Num: 15

Candidate Starts for Saintus_87:

(12, 44877), (13, 44862), (Start: 15 @44847 has 16 MA's), (16, 44823), (20, 44697),

Gene: Smeadley_92 Start: 47986, Stop: 47771, Start Num: 15

Candidate Starts for Smeadley_92:

(12, 48016), (13, 48001), (Start: 15 @47986 has 16 MA's), (16, 47962), (20, 47836),

Gene: Stephig9_93 Start: 48337, Stop: 48122, Start Num: 15

Candidate Starts for Stephig9_93:

(12, 48367), (13, 48352), (Start: 15 @48337 has 16 MA's), (16, 48313), (20, 48187),

Gene: Swirley_79 Start: 46658, Stop: 46440, Start Num: 14

Candidate Starts for Swirley_79:

(Start: 14 @46658 has 7 MA's), (16, 46634), (17, 46616), (18, 46592), (21, 46505), (23, 46484),

Gene: Takoda_64 Start: 42595, Stop: 42383, Start Num: 15

Candidate Starts for Takoda_64:

(Start: 15 @42595 has 16 MA's), (18, 42529),

Gene: Theia_79 Start: 46989, Stop: 46771, Start Num: 14

Candidate Starts for Theia_79:

(Start: 14 @46989 has 7 MA's), (16, 46965), (17, 46947), (18, 46923), (21, 46836),