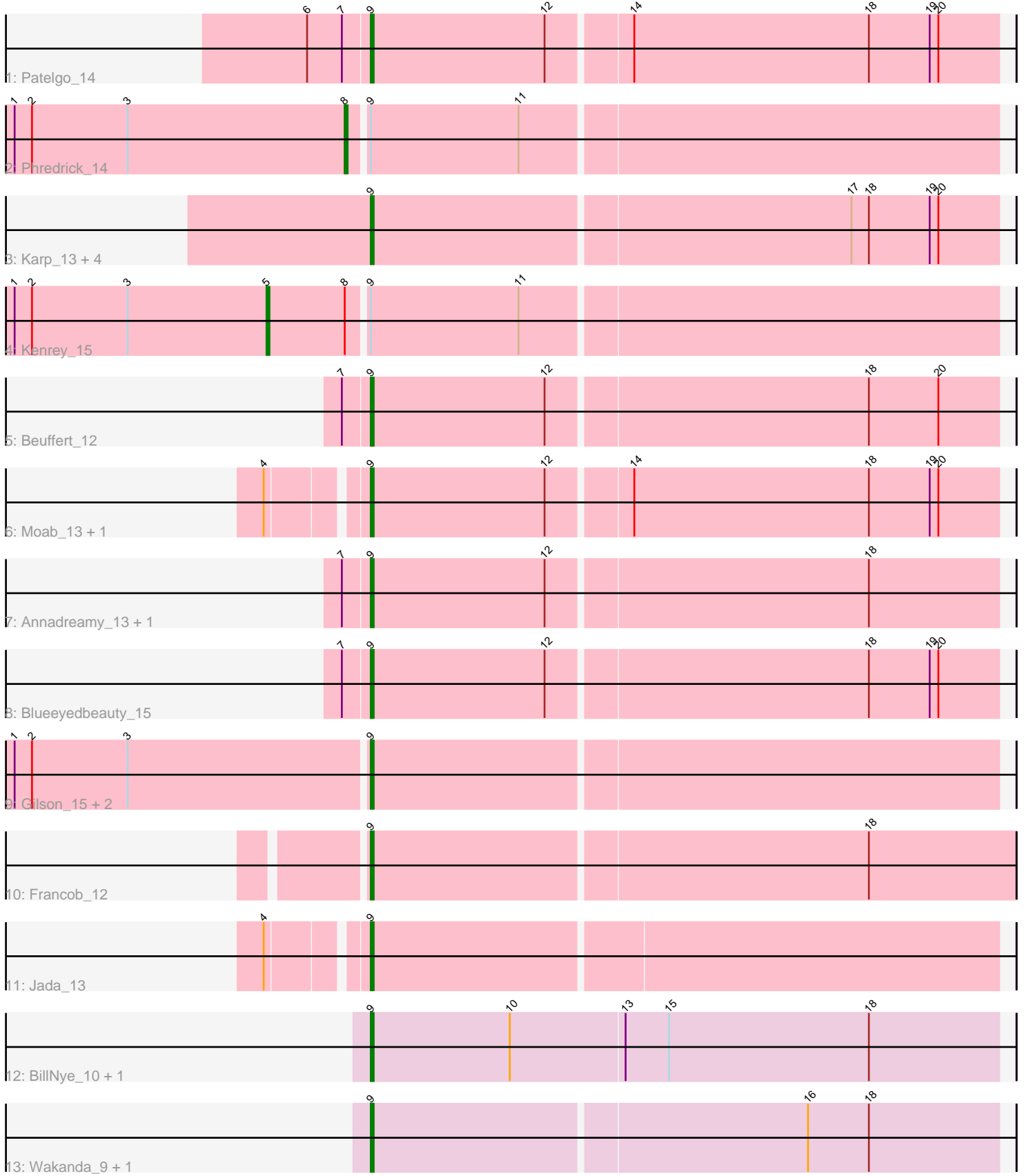


Pham 86614



Note: Tracks are now grouped by subcluster and scaled. Switching in subcluster is indicated by changes in track color. Track scale is now set by default to display the region 30 bp upstream of start 1 to 30 bp downstream of the last possible start. If this default region is judged to be packed too tightly with annotated starts, the track will be further scaled to only show that region of the ORF with annotated starts. This action will be indicated by adding "Zoomed" to the title. For starts, yellow indicates the location of called starts comprised solely of Glimmer/GeneMark auto-annotations, green indicates the location of called starts with at least 1 manual gene annotation.

Pham 86614 Report

This analysis was run 04/28/24 on database version 559.

Pham number 86614 has 23 members, 0 are drafts.

Phages represented in each track:

- Track 1 : Patelgo_14
- Track 2 : Phredrick_14
- Track 3 : Karp_13, Stigma_13, Belfort_15, SparkleGoddess_13, Comrade_13
- Track 4 : Kenrey_15
- Track 5 : Beuffert_12
- Track 6 : Moab_13, Forrest_15
- Track 7 : Annadreamy_13, Limpid_13
- Track 8 : Blueeyedbeauty_15
- Track 9 : Gilson_15, MeganTheeKilla_13, Emma1919_15
- Track 10 : Francob_12
- Track 11 : Jada_13
- Track 12 : BillNye_10, Circinus_11
- Track 13 : Wakanda_9, Muntaha_10

Summary of Final Annotations (See graph section above for start numbers):

The start number called the most often in the published annotations is 9, it was called in 21 of the 23 non-draft genes in the pham.

Genes that call this "Most Annotated" start:

- Annadreamy_13, Belfort_15, Beuffert_12, BillNye_10, Blueeyedbeauty_15, Circinus_11, Comrade_13, Emma1919_15, Forrest_15, Francob_12, Gilson_15, Jada_13, Karp_13, Limpid_13, MeganTheeKilla_13, Moab_13, Muntaha_10, Patelgo_14, SparkleGoddess_13, Stigma_13, Wakanda_9,

Genes that have the "Most Annotated" start but do not call it:

- Kenrey_15, Phredrick_14,

Genes that do not have the "Most Annotated" start:

-

Summary by start number:

Start 5:

- Found in 1 of 23 (4.3%) of genes in pham
- Manual Annotations of this start: 1 of 23
- Called 100.0% of time when present
- Phage (with cluster) where this start called: Kenrey_15 (BK1),

Start 8:

- Found in 2 of 23 (8.7%) of genes in pham
- Manual Annotations of this start: 1 of 23
- Called 50.0% of time when present
- Phage (with cluster) where this start called: Phredrick_14 (BK1),

Start 9:

- Found in 23 of 23 (100.0%) of genes in pham
- Manual Annotations of this start: 21 of 23
- Called 91.3% of time when present
- Phage (with cluster) where this start called: Annadreamy_13 (BK1), Belfort_15 (BK1), Beuffert_12 (BK1), BillNye_10 (BK2), Blueeyedbeauty_15 (BK1), Circinus_11 (BK2), Comrade_13 (BK1), Emma1919_15 (BK1), Forrest_15 (BK1), Francob_12 (BK1), Gilson_15 (BK1), Jada_13 (BK1), Karp_13 (BK1), Limpid_13 (BK1), MeganTheeKilla_13 (BK1), Moab_13 (BK1), Muntaha_10 (BK2), Patelgo_14 (BK1), SparkleGoddess_13 (BK1), Stigma_13 (BK1), Wakanda_9 (BK2),

Summary by clusters:

There are 2 clusters represented in this pham: BK1, BK2,

Info for manual annotations of cluster BK1:

- Start number 5 was manually annotated 1 time for cluster BK1.
- Start number 8 was manually annotated 1 time for cluster BK1.
- Start number 9 was manually annotated 17 times for cluster BK1.

Info for manual annotations of cluster BK2:

- Start number 9 was manually annotated 4 times for cluster BK2.

Gene Information:

Gene: Annadreamy_13 Start: 4081, Stop: 3869, Start Num: 9

Candidate Starts for Annadreamy_13:

(7, 4090), (Start: 9 @4081 has 21 MA's), (12, 4021), (18, 3913),

Gene: Belfort_15 Start: 4877, Stop: 4665, Start Num: 9

Candidate Starts for Belfort_15:

(Start: 9 @4877 has 21 MA's), (17, 4715), (18, 4709), (19, 4688), (20, 4685),

Gene: Beuffert_12 Start: 3911, Stop: 3699, Start Num: 9

Candidate Starts for Beuffert_12:

(7, 3920), (Start: 9 @3911 has 21 MA's), (12, 3851), (18, 3743), (20, 3719),

Gene: BillNye_10 Start: 4815, Stop: 4600, Start Num: 9

Candidate Starts for BillNye_10:

(Start: 9 @4815 has 21 MA's), (10, 4767), (13, 4728), (15, 4713), (18, 4644),

Gene: Blueeyedbeauty_15 Start: 4744, Stop: 4532, Start Num: 9

Candidate Starts for Blueeyedbeauty_15:

(7, 4753), (Start: 9 @4744 has 21 MA's), (12, 4684), (18, 4576), (19, 4555), (20, 4552),

Gene: Circinus_11 Start: 4696, Stop: 4481, Start Num: 9

Candidate Starts for Circinus_11:

(Start: 9 @4696 has 21 MA's), (10, 4648), (13, 4609), (15, 4594), (18, 4525),

Gene: Comrade_13 Start: 4090, Stop: 3878, Start Num: 9

Candidate Starts for Comrade_13:

(Start: 9 @4090 has 21 MA's), (17, 3928), (18, 3922), (19, 3901), (20, 3898),

Gene: Emma1919_15 Start: 4685, Stop: 4473, Start Num: 9

Candidate Starts for Emma1919_15:

(1, 4805), (2, 4799), (3, 4766), (Start: 9 @4685 has 21 MA's),

Gene: Forrest_15 Start: 4819, Stop: 4607, Start Num: 9

Candidate Starts for Forrest_15:

(4, 4849), (Start: 9 @4819 has 21 MA's), (12, 4759), (14, 4732), (18, 4651), (19, 4630), (20, 4627),

Gene: Francob_12 Start: 4047, Stop: 3829, Start Num: 9

Candidate Starts for Francob_12:

(Start: 9 @4047 has 21 MA's), (18, 3879),

Gene: Gilson_15 Start: 4638, Stop: 4426, Start Num: 9

Candidate Starts for Gilson_15:

(1, 4758), (2, 4752), (3, 4719), (Start: 9 @4638 has 21 MA's),

Gene: Jada_13 Start: 3999, Stop: 3787, Start Num: 9

Candidate Starts for Jada_13:

(4, 4029), (Start: 9 @3999 has 21 MA's),

Gene: Karp_13 Start: 4093, Stop: 3881, Start Num: 9

Candidate Starts for Karp_13:

(Start: 9 @4093 has 21 MA's), (17, 3931), (18, 3925), (19, 3904), (20, 3901),

Gene: Kenrey_15 Start: 4723, Stop: 4478, Start Num: 5

Candidate Starts for Kenrey_15:

(1, 4810), (2, 4804), (3, 4771), (Start: 5 @4723 has 1 MA's), (Start: 8 @4696 has 1 MA's), (Start: 9 @4690 has 21 MA's), (11, 4639),

Gene: Limpid_13 Start: 4080, Stop: 3868, Start Num: 9

Candidate Starts for Limpid_13:

(7, 4089), (Start: 9 @4080 has 21 MA's), (12, 4020), (18, 3912),

Gene: MeganTheeKilla_13 Start: 3999, Stop: 3787, Start Num: 9

Candidate Starts for MeganTheeKilla_13:

(1, 4119), (2, 4113), (3, 4080), (Start: 9 @3999 has 21 MA's),

Gene: Moab_13 Start: 4196, Stop: 3984, Start Num: 9

Candidate Starts for Moab_13:

(4, 4226), (Start: 9 @4196 has 21 MA's), (12, 4136), (14, 4109), (18, 4028), (19, 4007), (20, 4004),

Gene: Muntaha_10 Start: 4388, Stop: 4176, Start Num: 9

Candidate Starts for Muntaha_10:

(Start: 9 @4388 has 21 MA's), (16, 4241), (18, 4220),

Gene: Patelgo_14 Start: 4196, Stop: 3984, Start Num: 9

Candidate Starts for Patelgo_14:

(6, 4217), (7, 4205), (Start: 9 @4196 has 21 MA's), (12, 4136), (14, 4109), (18, 4028), (19, 4007), (20, 4004),

Gene: Phredrick_14 Start: 4304, Stop: 4086, Start Num: 8

Candidate Starts for Phredrick_14:

(1, 4418), (2, 4412), (3, 4379), (Start: 8 @4304 has 1 MA's), (Start: 9 @4298 has 21 MA's), (11, 4247),

Gene: SparkleGoddess_13 Start: 4089, Stop: 3877, Start Num: 9

Candidate Starts for SparkleGoddess_13:

(Start: 9 @4089 has 21 MA's), (17, 3927), (18, 3921), (19, 3900), (20, 3897),

Gene: Stigma_13 Start: 4093, Stop: 3881, Start Num: 9

Candidate Starts for Stigma_13:

(Start: 9 @4093 has 21 MA's), (17, 3931), (18, 3925), (19, 3904), (20, 3901),

Gene: Wakanda_9 Start: 4287, Stop: 4075, Start Num: 9

Candidate Starts for Wakanda_9:

(Start: 9 @4287 has 21 MA's), (16, 4140), (18, 4119),