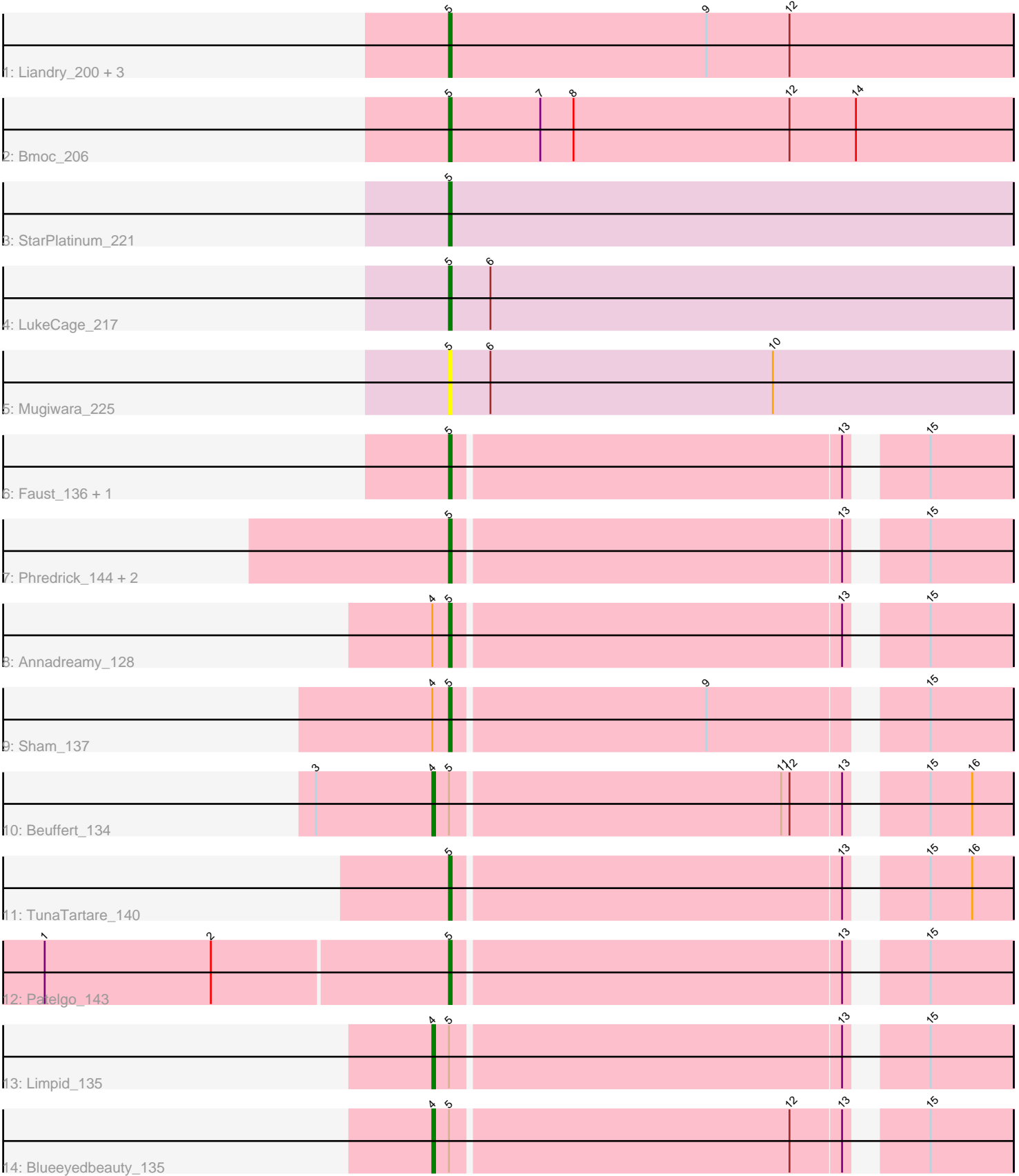


Pham 86858



Note: Tracks are now grouped by subcluster and scaled. Switching in subcluster is indicated by changes in track color. Track scale is now set by default to display the region 30 bp upstream of start 1 to 30 bp downstream of the last possible start. If this default region is judged to be packed too tightly with annotated starts, the track will be further scaled to only show that region of the ORF with annotated starts. This action will be indicated by adding "Zoomed" to the title. For starts, yellow indicates the location of called starts comprised solely of Glimmer/GeneMark auto-annotations, green indicates the location of called starts with at least 1 manual gene annotation.

## Pham 86858 Report

This analysis was run 04/05/24 on database version 557.

Pham number 86858 has 20 members, 2 are drafts.

Phages represented in each track:

- Track 1 : Liandry\_200, Squillum\_203, PinkiePie\_200, Bartholomune\_201
- Track 2 : Bmoc\_206
- Track 3 : StarPlatinum\_221
- Track 4 : LukeCage\_217
- Track 5 : Mugiware\_225
- Track 6 : Faust\_136, SeresaTree\_137
- Track 7 : Phredrick\_144, Jada\_143, Forrest\_147
- Track 8 : Annadreamy\_128
- Track 9 : Sham\_137
- Track 10 : Beuffert\_134
- Track 11 : TunaTartare\_140
- Track 12 : Patelgo\_143
- Track 13 : Limpid\_135
- Track 14 : Blueeyedbeauty\_135

### ***Summary of Final Annotations (See graph section above for start numbers):***

The start number called the most often in the published annotations is 5, it was called in 15 of the 18 non-draft genes in the pham.

Genes that call this "Most Annotated" start:

- Annadreamy\_128, Bartholomune\_201, Bmoc\_206, Faust\_136, Forrest\_147, Jada\_143, Liandry\_200, LukeCage\_217, Mugiware\_225, Patelgo\_143, Phredrick\_144, PinkiePie\_200, SeresaTree\_137, Sham\_137, Squillum\_203, StarPlatinum\_221, TunaTartare\_140,

Genes that have the "Most Annotated" start but do not call it:

- Beuffert\_134, Blueeyedbeauty\_135, Limpid\_135,

Genes that do not have the "Most Annotated" start:

- 

### **Summary by start number:**

#### Start 4:

- Found in 5 of 20 ( 25.0% ) of genes in pham
- Manual Annotations of this start: 3 of 18
- Called 60.0% of time when present
- Phage (with cluster) where this start called: Beuffert\_134 (BK1), Blueeyedbeauty\_135 (BK1), Limpid\_135 (BK1),

#### Start 5:

- Found in 20 of 20 ( 100.0% ) of genes in pham
- Manual Annotations of this start: 15 of 18
- Called 85.0% of time when present
- Phage (with cluster) where this start called: Annadreamy\_128 (BK1), Bartholomune\_201 (BE1), Bmoc\_206 (BE1), Faust\_136 (BK1), Forrest\_147 (BK1), Jada\_143 (BK1), Liandry\_200 (BE1), LukeCage\_217 (BE2), Mugiwara\_225 (BE2), Patelgo\_143 (BK1), Phredrick\_144 (BK1), PinkiePie\_200 (BE1), SeresaTree\_137 (BK1), Sham\_137 (BK1), Squillium\_203 (BE1), StarPlatinum\_221 (BE2), TunaTartare\_140 (BK1),

### Summary by clusters:

There are 3 clusters represented in this pham: BE2, BE1, BK1,

Info for manual annotations of cluster BE1:

- Start number 5 was manually annotated 5 times for cluster BE1.

Info for manual annotations of cluster BE2:

- Start number 5 was manually annotated 2 times for cluster BE2.

Info for manual annotations of cluster BK1:

- Start number 4 was manually annotated 3 times for cluster BK1.
- Start number 5 was manually annotated 8 times for cluster BK1.

### Gene Information:

Gene: Annadreamy\_128 Start: 74883, Stop: 75071, Start Num: 5

Candidate Starts for Annadreamy\_128:

(Start: 4 @74877 has 3 MA's), (Start: 5 @74883 has 15 MA's), (13, 75021), (15, 75042),

Gene: Bartholomune\_201 Start: 103950, Stop: 104153, Start Num: 5

Candidate Starts for Bartholomune\_201:

(Start: 5 @103950 has 15 MA's), (9, 104043), (12, 104073),

Gene: Beuffert\_134 Start: 79373, Stop: 79567, Start Num: 4

Candidate Starts for Beuffert\_134:

(3, 79331), (Start: 4 @79373 has 3 MA's), (Start: 5 @79379 has 15 MA's), (11, 79496), (12, 79499), (13, 79517), (15, 79538), (16, 79553),

Gene: Blueeyedbeauty\_135 Start: 78631, Stop: 78825, Start Num: 4

Candidate Starts for Blueeyedbeauty\_135:

(Start: 4 @78631 has 3 MA's), (Start: 5 @78637 has 15 MA's), (12, 78757), (13, 78775), (15, 78796),

Gene: Bmoc\_206 Start: 104845, Stop: 105048, Start Num: 5  
Candidate Starts for Bmoc\_206:  
(Start: 5 @104845 has 15 MA's), (7, 104878), (8, 104890), (12, 104968), (14, 104992),

Gene: Faust\_136 Start: 81461, Stop: 81649, Start Num: 5  
Candidate Starts for Faust\_136:  
(Start: 5 @81461 has 15 MA's), (13, 81599), (15, 81620),

Gene: Forrest\_147 Start: 82121, Stop: 82309, Start Num: 5  
Candidate Starts for Forrest\_147:  
(Start: 5 @82121 has 15 MA's), (13, 82259), (15, 82280),

Gene: Jada\_143 Start: 81051, Stop: 81239, Start Num: 5  
Candidate Starts for Jada\_143:  
(Start: 5 @81051 has 15 MA's), (13, 81189), (15, 81210),

Gene: Liandry\_200 Start: 104269, Stop: 104472, Start Num: 5  
Candidate Starts for Liandry\_200:  
(Start: 5 @104269 has 15 MA's), (9, 104362), (12, 104392),

Gene: Limpid\_135 Start: 80185, Stop: 80379, Start Num: 4  
Candidate Starts for Limpid\_135:  
(Start: 4 @80185 has 3 MA's), (Start: 5 @80191 has 15 MA's), (13, 80329), (15, 80350),

Gene: LukeCage\_217 Start: 107119, Stop: 107322, Start Num: 5  
Candidate Starts for LukeCage\_217:  
(Start: 5 @107119 has 15 MA's), (6, 107134),

Gene: Mugiwara\_225 Start: 107710, Stop: 107913, Start Num: 5  
Candidate Starts for Mugiwara\_225:  
(Start: 5 @107710 has 15 MA's), (6, 107725), (10, 107827),

Gene: Patelgo\_143 Start: 83675, Stop: 83863, Start Num: 5  
Candidate Starts for Patelgo\_143:  
(1, 83531), (2, 83591), (Start: 5 @83675 has 15 MA's), (13, 83813), (15, 83834),

Gene: Phredrick\_144 Start: 80707, Stop: 80895, Start Num: 5  
Candidate Starts for Phredrick\_144:  
(Start: 5 @80707 has 15 MA's), (13, 80845), (15, 80866),

Gene: PinkiePie\_200 Start: 104269, Stop: 104472, Start Num: 5  
Candidate Starts for PinkiePie\_200:  
(Start: 5 @104269 has 15 MA's), (9, 104362), (12, 104392),

Gene: SeresaTree\_137 Start: 80843, Stop: 81031, Start Num: 5  
Candidate Starts for SeresaTree\_137:  
(Start: 5 @80843 has 15 MA's), (13, 80981), (15, 81002),

Gene: Sham\_137 Start: 81750, Stop: 81938, Start Num: 5  
Candidate Starts for Sham\_137:  
(Start: 4 @81744 has 3 MA's), (Start: 5 @81750 has 15 MA's), (9, 81840), (15, 81909),

Gene: Squillium\_203 Start: 104271, Stop: 104474, Start Num: 5

Candidate Starts for Squillium\_203:

(Start: 5 @104271 has 15 MA's), (9, 104364), (12, 104394),

Gene: StarPlatinum\_221 Start: 107619, Stop: 107822, Start Num: 5

Candidate Starts for StarPlatinum\_221:

(Start: 5 @107619 has 15 MA's),

Gene: TunaTartare\_140 Start: 83474, Stop: 83662, Start Num: 5

Candidate Starts for TunaTartare\_140:

(Start: 5 @83474 has 15 MA's), (13, 83612), (15, 83633), (16, 83648),