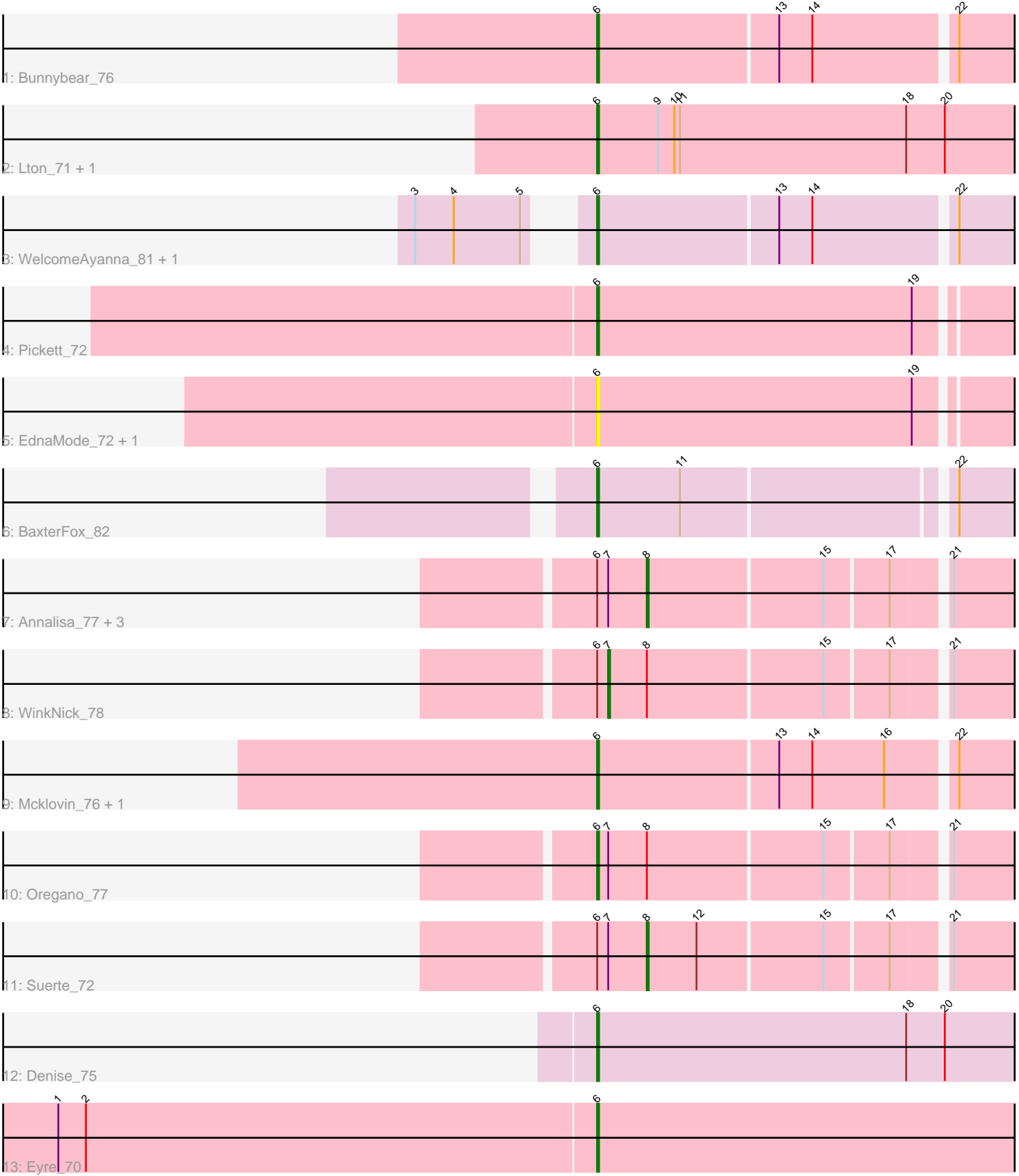


Pham 86902



Note: Tracks are now grouped by subcluster and scaled. Switching in subcluster is indicated by changes in track color. Track scale is now set by default to display the region 30 bp upstream of start 1 to 30 bp downstream of the last possible start. If this default region is judged to be packed too tightly with annotated starts, the track will be further scaled to only show that region of the ORF with annotated starts. This action will be indicated by adding "Zoomed" to the title. For starts, yellow indicates the location of called starts comprised solely of Glimmer/GeneMark auto-annotations, green indicates the location of called starts with at least 1 manual gene annotation.

Pham 86902 Report

This analysis was run 04/05/24 on database version 557.

Pham number 86902 has 20 members, 5 are drafts.

Phages represented in each track:

- Track 1 : Bunnybear_76
- Track 2 : Lton_71, Pepperoni_67
- Track 3 : WelcomeAyanna_81, ThankyouJordi_81
- Track 4 : Pickett_72
- Track 5 : EdnaMode_72, JCole_71
- Track 6 : BaxterFox_82
- Track 7 : Annalisa_77, Dolores_78, DobbysSock_71, Sekhmet_77
- Track 8 : WinkNick_78
- Track 9 : Mcklovin_76, PhriskyACE_72
- Track 10 : Oregano_77
- Track 11 : Suerte_72
- Track 12 : Denise_75
- Track 13 : Eyre_70

Summary of Final Annotations (See graph section above for start numbers):

The start number called the most often in the published annotations is 6, it was called in 10 of the 15 non-draft genes in the pham.

Genes that call this "Most Annotated" start:

- BaxterFox_82, Bunnybear_76, Denise_75, EdnaMode_72, Eyre_70, JCole_71, Lton_71, Mcklovin_76, Oregano_77, Pepperoni_67, PhriskyACE_72, Pickett_72, ThankyouJordi_81, WelcomeAyanna_81,

Genes that have the "Most Annotated" start but do not call it:

- Annalisa_77, DobbysSock_71, Dolores_78, Sekhmet_77, Suerte_72, WinkNick_78,

Genes that do not have the "Most Annotated" start:

-

Summary by start number:

Start 6:

- Found in 20 of 20 (100.0%) of genes in pham

- Manual Annotations of this start: 10 of 15
- Called 70.0% of time when present
- Phage (with cluster) where this start called: BaxterFox_82 (CZ3), Bunnybear_76 (CZ), Denise_75 (CZ5), EdnaMode_72 (CZ2), Eyre_70 (singleton), JCole_71 (CZ2), Lton_71 (CZ), Mcklovin_76 (CZ4), Oregano_77 (CZ4), Pepperoni_67 (CZ), PhriskyACE_72 (CZ4), Pickett_72 (CZ2), ThankyouJordi_81 (CZ1), WelcomeAyanna_81 (CZ1),

Start 7:

- Found in 7 of 20 (35.0%) of genes in pham
- Manual Annotations of this start: 1 of 15
- Called 14.3% of time when present
- Phage (with cluster) where this start called: WinkNick_78 (CZ4),

Start 8:

- Found in 7 of 20 (35.0%) of genes in pham
- Manual Annotations of this start: 4 of 15
- Called 71.4% of time when present
- Phage (with cluster) where this start called: Annalisa_77 (CZ4), DobbysSock_71 (CZ4), Dolores_78 (CZ4), Sekhmet_77 (CZ4), Suerte_72 (CZ4),

Summary by clusters:

There are 7 clusters represented in this pham: singleton, CZ2, CZ3, CZ1, CZ4, CZ5, CZ,

Info for manual annotations of cluster CZ:

- Start number 6 was manually annotated 2 times for cluster CZ.

Info for manual annotations of cluster CZ1:

- Start number 6 was manually annotated 2 times for cluster CZ1.

Info for manual annotations of cluster CZ2:

- Start number 6 was manually annotated 1 time for cluster CZ2.

Info for manual annotations of cluster CZ3:

- Start number 6 was manually annotated 1 time for cluster CZ3.

Info for manual annotations of cluster CZ4:

- Start number 6 was manually annotated 2 times for cluster CZ4.
- Start number 7 was manually annotated 1 time for cluster CZ4.
- Start number 8 was manually annotated 4 times for cluster CZ4.

Info for manual annotations of cluster CZ5:

- Start number 6 was manually annotated 1 time for cluster CZ5.

Gene Information:

Gene: Annalisa_77 Start: 46340, Stop: 46540, Start Num: 8

Candidate Starts for Annalisa_77:

(Start: 6 @46313 has 10 MA's), (Start: 7 @46319 has 1 MA's), (Start: 8 @46340 has 4 MA's), (15, 46433), (17, 46466), (21, 46493),

Gene: BaxterFox_82 Start: 52582, Stop: 52809, Start Num: 6

Candidate Starts for BaxterFox_82:

(Start: 6 @52582 has 10 MA's), (11, 52627), (22, 52765),

Gene: Bunnybear_76 Start: 50344, Stop: 50574, Start Num: 6

Candidate Starts for Bunnybear_76:

(Start: 6 @50344 has 10 MA's), (13, 50440), (14, 50458), (22, 50530),

Gene: Denise_75 Start: 43658, Stop: 43915, Start Num: 6

Candidate Starts for Denise_75:

(Start: 6 @43658 has 10 MA's), (18, 43826), (20, 43847),

Gene: DobbysSock_71 Start: 47255, Stop: 47455, Start Num: 8

Candidate Starts for DobbysSock_71:

(Start: 6 @47228 has 10 MA's), (Start: 7 @47234 has 1 MA's), (Start: 8 @47255 has 4 MA's), (15, 47348), (17, 47381), (21, 47408),

Gene: Dolores_78 Start: 46393, Stop: 46593, Start Num: 8

Candidate Starts for Dolores_78:

(Start: 6 @46366 has 10 MA's), (Start: 7 @46372 has 1 MA's), (Start: 8 @46393 has 4 MA's), (15, 46486), (17, 46519), (21, 46546),

Gene: EdnaMode_72 Start: 45623, Stop: 45871, Start Num: 6

Candidate Starts for EdnaMode_72:

(Start: 6 @45623 has 10 MA's), (19, 45794),

Gene: Eyre_70 Start: 43252, Stop: 43515, Start Num: 6

Candidate Starts for Eyre_70:

(1, 42961), (2, 42976), (Start: 6 @43252 has 10 MA's),

Gene: JCole_71 Start: 44185, Stop: 44433, Start Num: 6

Candidate Starts for JCole_71:

(Start: 6 @44185 has 10 MA's), (19, 44356),

Gene: Lton_71 Start: 40745, Stop: 41002, Start Num: 6

Candidate Starts for Lton_71:

(Start: 6 @40745 has 10 MA's), (9, 40778), (10, 40787), (11, 40790), (18, 40913), (20, 40934),

Gene: Mcklovin_76 Start: 52234, Stop: 52464, Start Num: 6

Candidate Starts for Mcklovin_76:

(Start: 6 @52234 has 10 MA's), (13, 52330), (14, 52348), (16, 52387), (22, 52420),

Gene: Oregano_77 Start: 46605, Stop: 46832, Start Num: 6

Candidate Starts for Oregano_77:

(Start: 6 @46605 has 10 MA's), (Start: 7 @46611 has 1 MA's), (Start: 8 @46632 has 4 MA's), (15, 46725), (17, 46758), (21, 46785),

Gene: Pepperoni_67 Start: 40433, Stop: 40690, Start Num: 6

Candidate Starts for Pepperoni_67:

(Start: 6 @40433 has 10 MA's), (9, 40466), (10, 40475), (11, 40478), (18, 40601), (20, 40622),

Gene: PhriskyACE_72 Start: 46259, Stop: 46489, Start Num: 6

Candidate Starts for PhriskyACE_72:

(Start: 6 @46259 has 10 MA's), (13, 46355), (14, 46373), (16, 46412), (22, 46445),

Gene: Pickett_72 Start: 44461, Stop: 44709, Start Num: 6

Candidate Starts for Pickett_72:

(Start: 6 @44461 has 10 MA's), (19, 44632),

Gene: Sekhmet_77 Start: 46792, Stop: 46992, Start Num: 8

Candidate Starts for Sekhmet_77:

(Start: 6 @46765 has 10 MA's), (Start: 7 @46771 has 1 MA's), (Start: 8 @46792 has 4 MA's), (15, 46885), (17, 46918), (21, 46945),

Gene: Suerte_72 Start: 46363, Stop: 46563, Start Num: 8

Candidate Starts for Suerte_72:

(Start: 6 @46336 has 10 MA's), (Start: 7 @46342 has 1 MA's), (Start: 8 @46363 has 4 MA's), (12, 46390), (15, 46456), (17, 46489), (21, 46516),

Gene: ThankyouJordi_81 Start: 52529, Stop: 52759, Start Num: 6

Candidate Starts for ThankyouJordi_81:

(3, 52457), (4, 52478), (5, 52514), (Start: 6 @52529 has 10 MA's), (13, 52625), (14, 52643), (22, 52715),

Gene: WelcomeAyanna_81 Start: 52676, Stop: 52906, Start Num: 6

Candidate Starts for WelcomeAyanna_81:

(3, 52604), (4, 52625), (5, 52661), (Start: 6 @52676 has 10 MA's), (13, 52772), (14, 52790), (22, 52862),

Gene: WinkNick_78 Start: 46295, Stop: 46516, Start Num: 7

Candidate Starts for WinkNick_78:

(Start: 6 @46289 has 10 MA's), (Start: 7 @46295 has 1 MA's), (Start: 8 @46316 has 4 MA's), (15, 46409), (17, 46442), (21, 46469),