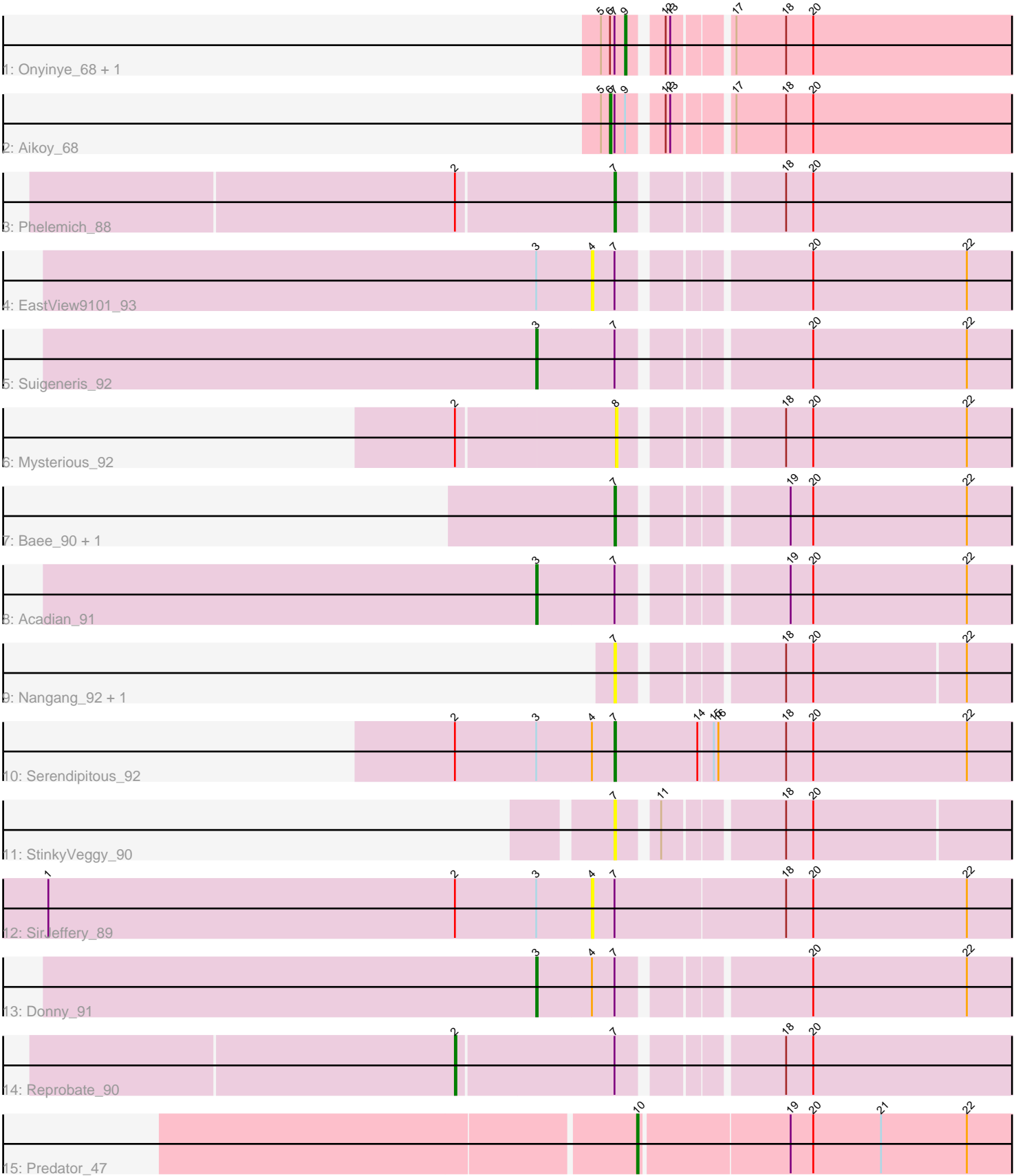


Pham 86957



Note: Tracks are now grouped by subcluster and scaled. Switching in subcluster is indicated by changes in track color. Track scale is now set by default to display the region 30 bp upstream of start 1 to 30 bp downstream of the last possible start. If this default region is judged to be packed too tightly with annotated starts, the track will be further scaled to only show that region of the ORF with annotated starts. This action will be indicated by adding "Zoomed" to the title. For starts, yellow indicates the location of called starts comprised solely of Glimmer/GeneMark auto-annotations, green indicates the location of called starts with at least 1 manual gene annotation.

## Pham 86957 Report

This analysis was run 04/05/24 on database version 557.

Pham number 86957 has 18 members, 6 are drafts.

Phages represented in each track:

- Track 1 : Onyinye\_68, Leopard\_67
- Track 2 : Aikoy\_68
- Track 3 : Phelemich\_88
- Track 4 : EastView9101\_93
- Track 5 : Suigeneris\_92
- Track 6 : Mysterious\_92
- Track 7 : Baee\_90, Rich\_89
- Track 8 : Acadian\_91
- Track 9 : Nangang\_92, DigitDog\_93
- Track 10 : Serendipitous\_92
- Track 11 : StinkyVeggy\_90
- Track 12 : SirJeffery\_89
- Track 13 : Donny\_91
- Track 14 : Reprobate\_90
- Track 15 : Predator\_47

### ***Summary of Final Annotations (See graph section above for start numbers):***

The start number called the most often in the published annotations is 7, it was called in 4 of the 12 non-draft genes in the pham.

Genes that call this "Most Annotated" start:

- Baee\_90, DigitDog\_93, Nangang\_92, Phelemich\_88, Rich\_89, Serendipitous\_92, StinkyVeggy\_90,

Genes that have the "Most Annotated" start but do not call it:

- Acadian\_91, Aikoy\_68, Donny\_91, EastView9101\_93, Leopard\_67, Onyinye\_68, Reprobate\_90, SirJeffery\_89, Suigeneris\_92,

Genes that do not have the "Most Annotated" start:

- Mysterious\_92, Predator\_47,

### **Summary by start number:**

Start 2:

- Found in 5 of 18 ( 27.8% ) of genes in pham
- Manual Annotations of this start: 1 of 12
- Called 20.0% of time when present
- Phage (with cluster) where this start called: Reprobate\_90 (B5),

Start 3:

- Found in 6 of 18 ( 33.3% ) of genes in pham
- Manual Annotations of this start: 3 of 12
- Called 50.0% of time when present
- Phage (with cluster) where this start called: Acadian\_91 (B5), Donny\_91 (B5), Suigeneris\_92 (B5),

Start 4:

- Found in 4 of 18 ( 22.2% ) of genes in pham
- No Manual Annotations of this start.
- Called 50.0% of time when present
- Phage (with cluster) where this start called: EastView9101\_93 (B5), SirJeffery\_89 (B5),

Start 6:

- Found in 3 of 18 ( 16.7% ) of genes in pham
- Manual Annotations of this start: 1 of 12
- Called 33.3% of time when present
- Phage (with cluster) where this start called: Aikoy\_68 (AE),

Start 7:

- Found in 16 of 18 ( 88.9% ) of genes in pham
- Manual Annotations of this start: 4 of 12
- Called 43.8% of time when present
- Phage (with cluster) where this start called: Baee\_90 (B5), DigitDog\_93 (B5), Nangang\_92 (B5), Phelemich\_88 (B5), Rich\_89 (B5), Serendipitous\_92 (B5), StinkyVeggy\_90 (B5),

Start 8:

- Found in 1 of 18 ( 5.6% ) of genes in pham
- No Manual Annotations of this start.
- Called 100.0% of time when present
- Phage (with cluster) where this start called: Mysterious\_92 (B5),

Start 9:

- Found in 3 of 18 ( 16.7% ) of genes in pham
- Manual Annotations of this start: 2 of 12
- Called 66.7% of time when present
- Phage (with cluster) where this start called: Leopard\_67 (AE), Onyinye\_68 (AE),

Start 10:

- Found in 1 of 18 ( 5.6% ) of genes in pham
- Manual Annotations of this start: 1 of 12
- Called 100.0% of time when present
- Phage (with cluster) where this start called: Predator\_47 (H1),

**Summary by clusters:**

There are 3 clusters represented in this pham: B5, H1, AE,

Info for manual annotations of cluster AE:

- Start number 6 was manually annotated 1 time for cluster AE.
- Start number 9 was manually annotated 2 times for cluster AE.

Info for manual annotations of cluster B5:

- Start number 2 was manually annotated 1 time for cluster B5.
- Start number 3 was manually annotated 3 times for cluster B5.
- Start number 7 was manually annotated 4 times for cluster B5.

Info for manual annotations of cluster H1:

- Start number 10 was manually annotated 1 time for cluster H1.

### **Gene Information:**

Gene: Acadian\_91 Start: 67459, Stop: 67148, Start Num: 3

Candidate Starts for Acadian\_91:

(Start: 3 @67459 has 3 MA's), (Start: 7 @67408 has 4 MA's), (19, 67312), (20, 67297), (22, 67195),

Gene: Aikoy\_68 Start: 49001, Stop: 49264, Start Num: 6

Candidate Starts for Aikoy\_68:

(5, 48995), (Start: 6 @49001 has 1 MA's), (Start: 7 @49004 has 4 MA's), (Start: 9 @49010 has 2 MA's), (12, 49028), (13, 49031), (17, 49064), (18, 49097), (20, 49115),

Gene: Baee\_90 Start: 67913, Stop: 67653, Start Num: 7

Candidate Starts for Baee\_90:

(Start: 7 @67913 has 4 MA's), (19, 67817), (20, 67802), (22, 67700),

Gene: DigitDog\_93 Start: 67902, Stop: 67645, Start Num: 7

Candidate Starts for DigitDog\_93:

(Start: 7 @67902 has 4 MA's), (18, 67809), (20, 67791), (22, 67692),

Gene: Donny\_91 Start: 67286, Stop: 66975, Start Num: 3

Candidate Starts for Donny\_91:

(Start: 3 @67286 has 3 MA's), (4, 67250), (Start: 7 @67235 has 4 MA's), (20, 67124), (22, 67022),

Gene: EastView9101\_93 Start: 67442, Stop: 67167, Start Num: 4

Candidate Starts for EastView9101\_93:

(Start: 3 @67478 has 3 MA's), (4, 67442), (Start: 7 @67427 has 4 MA's), (20, 67316), (22, 67214),

Gene: Leopard\_67 Start: 49310, Stop: 49564, Start Num: 9

Candidate Starts for Leopard\_67:

(5, 49295), (Start: 6 @49301 has 1 MA's), (Start: 7 @49304 has 4 MA's), (Start: 9 @49310 has 2 MA's), (12, 49328), (13, 49331), (17, 49364), (18, 49397), (20, 49415),

Gene: Mysterious\_92 Start: 67326, Stop: 67057, Start Num: 8

Candidate Starts for Mysterious\_92:

(Start: 2 @67428 has 1 MA's), (8, 67326), (18, 67233), (20, 67215), (22, 67113),

Gene: Nangang\_92 Start: 67798, Stop: 67541, Start Num: 7  
Candidate Starts for Nangang\_92:  
(Start: 7 @67798 has 4 MA's), (18, 67705), (20, 67687), (22, 67588),

Gene: Onyinye\_68 Start: 49177, Stop: 49431, Start Num: 9  
Candidate Starts for Onyinye\_68:  
(5, 49162), (Start: 6 @49168 has 1 MA's), (Start: 7 @49171 has 4 MA's), (Start: 9 @49177 has 2 MA's), (12, 49195), (13, 49198), (17, 49231), (18, 49264), (20, 49282),

Gene: Phelemich\_88 Start: 67232, Stop: 66972, Start Num: 7  
Candidate Starts for Phelemich\_88:  
(Start: 2 @67334 has 1 MA's), (Start: 7 @67232 has 4 MA's), (18, 67139), (20, 67121),

Gene: Predator\_47 Start: 38369, Stop: 38629, Start Num: 10  
Candidate Starts for Predator\_47:  
(Start: 10 @38369 has 1 MA's), (19, 38465), (20, 38480), (21, 38525), (22, 38582),

Gene: Reprobate\_90 Start: 67339, Stop: 66977, Start Num: 2  
Candidate Starts for Reprobate\_90:  
(Start: 2 @67339 has 1 MA's), (Start: 7 @67237 has 4 MA's), (18, 67144), (20, 67126),

Gene: Rich\_89 Start: 67466, Stop: 67206, Start Num: 7  
Candidate Starts for Rich\_89:  
(Start: 7 @67466 has 4 MA's), (19, 67370), (20, 67355), (22, 67253),

Gene: Serendipitous\_92 Start: 67406, Stop: 67131, Start Num: 7  
Candidate Starts for Serendipitous\_92:  
(Start: 2 @67511 has 1 MA's), (Start: 3 @67457 has 3 MA's), (4, 67421), (Start: 7 @67406 has 4 MA's), (14, 67352), (15, 67343), (16, 67340), (18, 67295), (20, 67277), (22, 67175),

Gene: SirJeffery\_89 Start: 67479, Stop: 67186, Start Num: 4  
Candidate Starts for SirJeffery\_89:  
(1, 67839), (Start: 2 @67569 has 1 MA's), (Start: 3 @67515 has 3 MA's), (4, 67479), (Start: 7 @67464 has 4 MA's), (18, 67353), (20, 67335), (22, 67233),

Gene: StinkyVeggy\_90 Start: 67527, Stop: 67270, Start Num: 7  
Candidate Starts for StinkyVeggy\_90:  
(Start: 7 @67527 has 4 MA's), (11, 67506), (18, 67434), (20, 67416),

Gene: Suigeneris\_92 Start: 67674, Stop: 67363, Start Num: 3  
Candidate Starts for Suigeneris\_92:  
(Start: 3 @67674 has 3 MA's), (Start: 7 @67623 has 4 MA's), (20, 67512), (22, 67410),