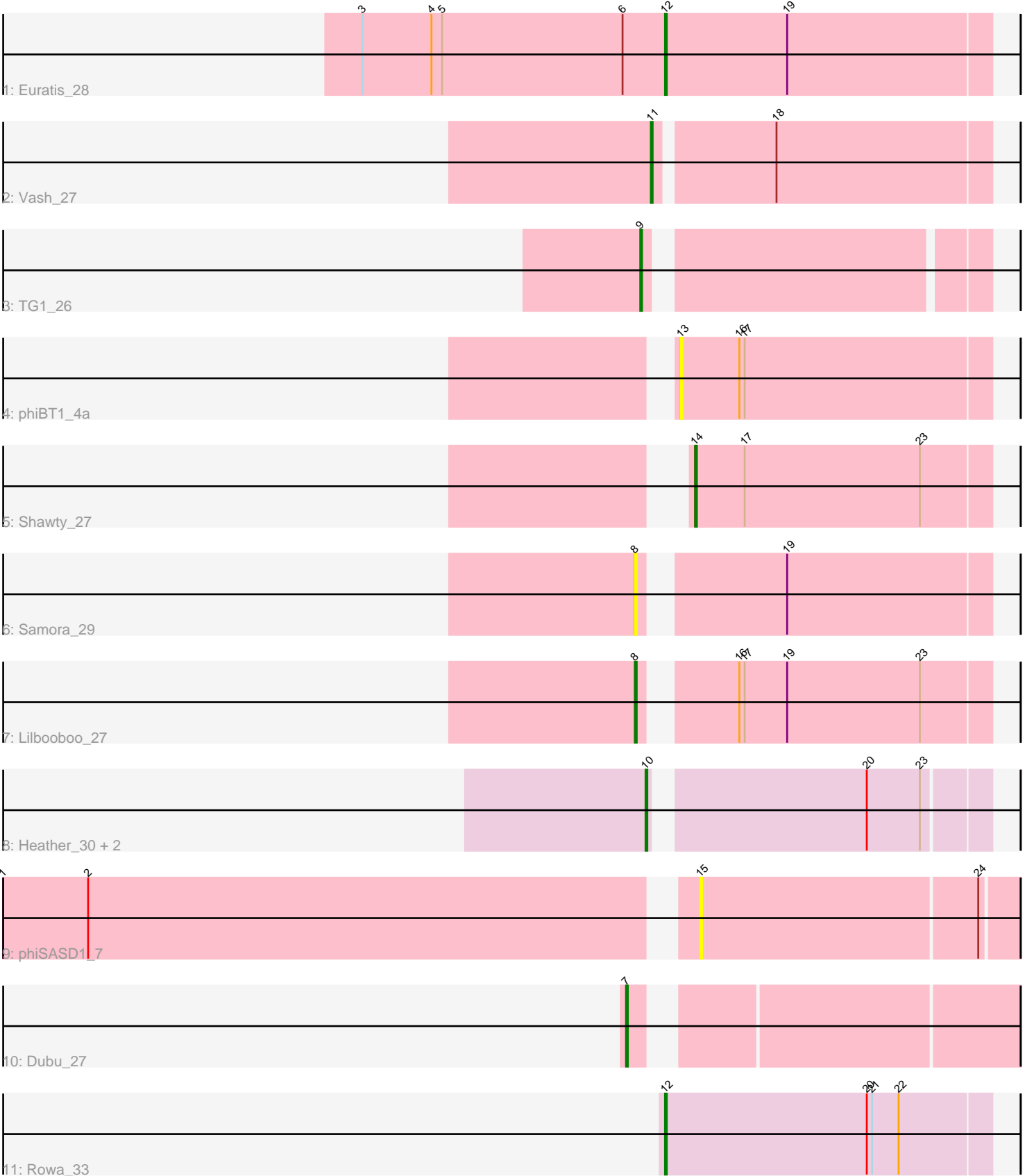


Pham 87185



Note: Tracks are now grouped by subcluster and scaled. Switching in subcluster is indicated by changes in track color. Track scale is now set by default to display the region 30 bp upstream of start 1 to 30 bp downstream of the last possible start. If this default region is judged to be packed too tightly with annotated starts, the track will be further scaled to only show that region of the ORF with annotated starts. This action will be indicated by adding "Zoomed" to the title. For starts, yellow indicates the location of called starts comprised solely of Glimmer/GeneMark auto-annotations, green indicates the location of called starts with at least 1 manual gene annotation.

Pham 87185 Report

This analysis was run 04/28/24 on database version 559.

WARNING: Pham size does not match number of genes in report. Either unphamerated genes have been added (by you) or starterator has removed genes due to invalid start codon.

Pham number 87185 has 13 members, 3 are drafts.

Phages represented in each track:

- Track 1 : Euratis_28
- Track 2 : Vash_27
- Track 3 : TG1_26
- Track 4 : phiBT1_4a
- Track 5 : Shawty_27
- Track 6 : Samora_29
- Track 7 : Lilbooboo_27
- Track 8 : Heather_30, Sebastisaurus_29, RemusLoopin_29
- Track 9 : phiSASD1_7
- Track 10 : Dubu_27
- Track 11 : Rowa_33

Summary of Final Annotations (See graph section above for start numbers):

The start number called the most often in the published annotations is 10, it was called in 3 of the 10 non-draft genes in the pham.

Genes that call this "Most Annotated" start:

- Heather_30, RemusLoopin_29, Sebastisaurus_29,

Genes that have the "Most Annotated" start but do not call it:

-

Genes that do not have the "Most Annotated" start:

- Dubu_27, Euratis_28, Lilbooboo_27, Rowa_33, Samora_29, Shawty_27, TG1_26, Vash_27, phiBT1_4a, phiSASD1_7,

Summary by start number:

Start 7:

- Found in 1 of 13 (7.7%) of genes in pham
- Manual Annotations of this start: 1 of 10
- Called 100.0% of time when present
- Phage (with cluster) where this start called: Dubu_27 (BJ),

Start 8:

- Found in 2 of 13 (15.4%) of genes in pham
- Manual Annotations of this start: 1 of 10
- Called 100.0% of time when present
- Phage (with cluster) where this start called: Lilbooboo_27 (BB1), Samora_29 (BB1),

Start 9:

- Found in 1 of 13 (7.7%) of genes in pham
- Manual Annotations of this start: 1 of 10
- Called 100.0% of time when present
- Phage (with cluster) where this start called: TG1_26 (BB1),

Start 10:

- Found in 3 of 13 (23.1%) of genes in pham
- Manual Annotations of this start: 3 of 10
- Called 100.0% of time when present
- Phage (with cluster) where this start called: Heather_30 (BB2), RemusLoopin_29 (BB2), Sebastisaurus_29 (BB2),

Start 11:

- Found in 1 of 13 (7.7%) of genes in pham
- Manual Annotations of this start: 1 of 10
- Called 100.0% of time when present
- Phage (with cluster) where this start called: Vash_27 (BB1),

Start 12:

- Found in 2 of 13 (15.4%) of genes in pham
- Manual Annotations of this start: 2 of 10
- Called 100.0% of time when present
- Phage (with cluster) where this start called: Euratis_28 (BB1), Rowa_33 (BL),

Start 13:

- Found in 1 of 13 (7.7%) of genes in pham
- No Manual Annotations of this start.
- Called 100.0% of time when present
- Phage (with cluster) where this start called: phiBT1_4a (BB1),

Start 14:

- Found in 1 of 13 (7.7%) of genes in pham
- Manual Annotations of this start: 1 of 10
- Called 100.0% of time when present
- Phage (with cluster) where this start called: Shawty_27 (BB1),

Start 15:

- Found in 1 of 13 (7.7%) of genes in pham
- No Manual Annotations of this start.
- Called 100.0% of time when present
- Phage (with cluster) where this start called: phiSASD1_7 (BJ),

Summary by clusters:

There are 4 clusters represented in this pham: BL, BJ, BB2, BB1,

Info for manual annotations of cluster BB1:

- Start number 8 was manually annotated 1 time for cluster BB1.
- Start number 9 was manually annotated 1 time for cluster BB1.
- Start number 11 was manually annotated 1 time for cluster BB1.
- Start number 12 was manually annotated 1 time for cluster BB1.
- Start number 14 was manually annotated 1 time for cluster BB1.

Info for manual annotations of cluster BB2:

- Start number 10 was manually annotated 3 times for cluster BB2.

Info for manual annotations of cluster BJ:

- Start number 7 was manually annotated 1 time for cluster BJ.

Info for manual annotations of cluster BL:

- Start number 12 was manually annotated 1 time for cluster BL.

Gene Information:

Gene: Dubu_27 Start: 22256, Stop: 22453, Start Num: 7

Candidate Starts for Dubu_27:

(Start: 7 @22256 has 1 MA's),

Gene: Euratis_28 Start: 22086, Stop: 22268, Start Num: 12

Candidate Starts for Euratis_28:

(3, 21915), (4, 21954), (5, 21960), (6, 22062), (Start: 12 @22086 has 2 MA's), (19, 22155),

Gene: Heather_30 Start: 22865, Stop: 23041, Start Num: 10

Candidate Starts for Heather_30:

(Start: 10 @22865 has 3 MA's), (20, 22976), (23, 23006),

Gene: Lilbooboo_27 Start: 22128, Stop: 22310, Start Num: 8

Candidate Starts for Lilbooboo_27:

(Start: 8 @22128 has 1 MA's), (16, 22170), (17, 22173), (19, 22197), (23, 22272),

Gene: RemusLoopin_29 Start: 23180, Stop: 23356, Start Num: 10

Candidate Starts for RemusLoopin_29:

(Start: 10 @23180 has 3 MA's), (20, 23291), (23, 23321),

Gene: Rowa_33 Start: 25175, Stop: 25357, Start Num: 12

Candidate Starts for Rowa_33:

(Start: 12 @25175 has 2 MA's), (20, 25289), (21, 25292), (22, 25307),

Gene: Samora_29 Start: 22731, Stop: 22913, Start Num: 8

Candidate Starts for Samora_29:

(Start: 8 @22731 has 1 MA's), (19, 22800),

Gene: Sebastisaurus_29 Start: 22974, Stop: 23150, Start Num: 10
Candidate Starts for Sebastisaurus_29:
(Start: 10 @22974 has 3 MA's), (20, 23085), (23, 23115),

Gene: Shawty_27 Start: 22636, Stop: 22800, Start Num: 14
Candidate Starts for Shawty_27:
(Start: 14 @22636 has 1 MA's), (17, 22663), (23, 22762),

Gene: TG1_26 Start: 22234, Stop: 22410, Start Num: 9
Candidate Starts for TG1_26:
(Start: 9 @22234 has 1 MA's),

Gene: Vash_27 Start: 21983, Stop: 22165, Start Num: 11
Candidate Starts for Vash_27:
(Start: 11 @21983 has 1 MA's), (18, 22046),

Gene: phiBT1_4a Start: 23452, Stop: 23625, Start Num: 13
Candidate Starts for phiBT1_4a:
(13, 23452), (16, 23485), (17, 23488),

Gene: phiSASD1_7 Start: 23075, Stop: 23248, Start Num: 15
Candidate Starts for phiSASD1_7:
(1, 22700), (2, 22748), (15, 23075), (24, 23228),