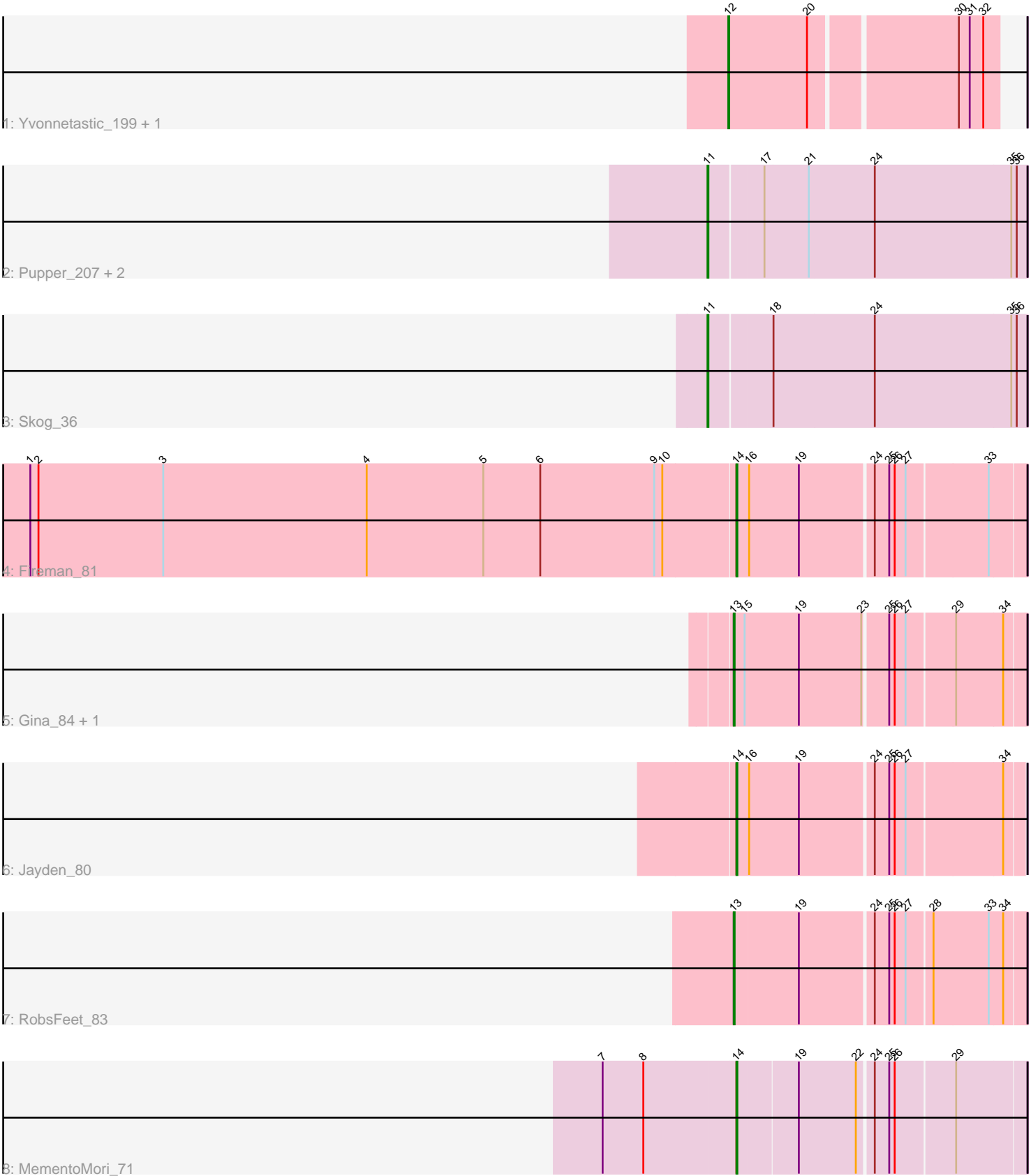


Pham 87347



Note: Tracks are now grouped by subcluster and scaled. Switching in subcluster is indicated by changes in track color. Track scale is now set by default to display the region 30 bp upstream of start 1 to 30 bp downstream of the last possible start. If this default region is judged to be packed too tightly with annotated starts, the track will be further scaled to only show that region of the ORF with annotated starts. This action will be indicated by adding "Zoomed" to the title. For starts, yellow indicates the location of called starts comprised solely of Glimmer/GeneMark auto-annotations, green indicates the location of called starts with at least 1 manual gene annotation.

## Pham 87347 Report

This analysis was run 04/28/24 on database version 559.

Pham number 87347 has 12 members, 1 are drafts.

Phages represented in each track:

- Track 1 : Yvonnetastic\_199, JonJames\_198
- Track 2 : Pupper\_207, CherryTomatoes\_214, SCentae\_206
- Track 3 : Skog\_36
- Track 4 : Fireman\_81
- Track 5 : Gina\_84, Teamocil\_84
- Track 6 : Jayden\_80
- Track 7 : RobsFeet\_83
- Track 8 : MementoMori\_71

### ***Summary of Final Annotations (See graph section above for start numbers):***

The start number called the most often in the published annotations is 11, it was called in 3 of the 11 non-draft genes in the pham.

Genes that call this "Most Annotated" start:

- CherryTomatoes\_214, Pupper\_207, SCentae\_206, Skog\_36,

Genes that have the "Most Annotated" start but do not call it:

- 

Genes that do not have the "Most Annotated" start:

- Fireman\_81, Gina\_84, Jayden\_80, JonJames\_198, MementoMori\_71, RobsFeet\_83, Teamocil\_84, Yvonnetastic\_199,

### **Summary by start number:**

Start 11:

- Found in 4 of 12 ( 33.3% ) of genes in pham
- Manual Annotations of this start: 3 of 11
- Called 100.0% of time when present
- Phage (with cluster) where this start called: CherryTomatoes\_214 (DO), Pupper\_207 (DO), SCentae\_206 (DO), Skog\_36 (DO),

Start 12:

- Found in 2 of 12 ( 16.7% ) of genes in pham
- Manual Annotations of this start: 2 of 11
- Called 100.0% of time when present
- Phage (with cluster) where this start called: JonJames\_198 (DD), Yvonnetastic\_199 (DD),

Start 13:

- Found in 3 of 12 ( 25.0% ) of genes in pham
- Manual Annotations of this start: 3 of 11
- Called 100.0% of time when present
- Phage (with cluster) where this start called: Gina\_84 (EC), RobsFeet\_83 (EC), Teamocil\_84 (EC),

Start 14:

- Found in 3 of 12 ( 25.0% ) of genes in pham
- Manual Annotations of this start: 3 of 11
- Called 100.0% of time when present
- Phage (with cluster) where this start called: Fireman\_81 (EC), Jayden\_80 (EC), MementoMori\_71 (EI),

### **Summary by clusters:**

There are 4 clusters represented in this pham: DO, DD, EI, EC,

Info for manual annotations of cluster DD:

- Start number 12 was manually annotated 2 times for cluster DD.

Info for manual annotations of cluster DO:

- Start number 11 was manually annotated 3 times for cluster DO.

Info for manual annotations of cluster EC:

- Start number 13 was manually annotated 3 times for cluster EC.
- Start number 14 was manually annotated 2 times for cluster EC.

Info for manual annotations of cluster EI:

- Start number 14 was manually annotated 1 time for cluster EI.

### **Gene Information:**

Gene: CherryTomatoes\_214 Start: 141376, Stop: 141720, Start Num: 11

Candidate Starts for CherryTomatoes\_214:

(Start: 11 @141376 has 3 MA's), (17, 141433), (21, 141481), (24, 141553), (35, 141703), (36, 141709),

Gene: Fireman\_81 Start: 47912, Stop: 48214, Start Num: 14

Candidate Starts for Fireman\_81:

(1, 47135), (2, 47144), (3, 47282), (4, 47507), (5, 47636), (6, 47699), (9, 47825), (10, 47834), (Start: 14 @47912 has 3 MA's), (16, 47924), (19, 47978), (24, 48056), (25, 48071), (26, 48077), (27, 48089), (33, 48176),

Gene: Gina\_84 Start: 46728, Stop: 47033, Start Num: 13

Candidate Starts for Gina\_84:

(Start: 13 @46728 has 3 MA's), (15, 46740), (19, 46797), (23, 46866), (25, 46890), (26, 46896), (27, 46908), (29, 46959), (34, 47010),

Gene: Jayden\_80 Start: 46610, Stop: 46909, Start Num: 14

Candidate Starts for Jayden\_80:

(Start: 14 @46610 has 3 MA's), (16, 46622), (19, 46676), (24, 46754), (25, 46769), (26, 46775), (27, 46787), (34, 46889),

Gene: JonJames\_198 Start: 98259, Stop: 97975, Start Num: 12

Candidate Starts for JonJames\_198:

(Start: 12 @98259 has 2 MA's), (20, 98172), (30, 98019), (31, 98007), (32, 97992),

Gene: MementoMori\_71 Start: 44661, Stop: 44960, Start Num: 14

Candidate Starts for MementoMori\_71:

(7, 44517), (8, 44562), (Start: 14 @44661 has 3 MA's), (19, 44724), (22, 44787), (24, 44802), (25, 44817), (26, 44823), (29, 44886),

Gene: Pupper\_207 Start: 141238, Stop: 141582, Start Num: 11

Candidate Starts for Pupper\_207:

(Start: 11 @141238 has 3 MA's), (17, 141295), (21, 141343), (24, 141415), (35, 141565), (36, 141571),

Gene: RobsFeet\_83 Start: 47466, Stop: 47771, Start Num: 13

Candidate Starts for RobsFeet\_83:

(Start: 13 @47466 has 3 MA's), (19, 47535), (24, 47613), (25, 47628), (26, 47634), (27, 47646), (28, 47673), (33, 47733), (34, 47748),

Gene: SCentae\_206 Start: 141429, Stop: 141773, Start Num: 11

Candidate Starts for SCentae\_206:

(Start: 11 @141429 has 3 MA's), (17, 141486), (21, 141534), (24, 141606), (35, 141756), (36, 141762),

Gene: Skog\_36 Start: 16728, Stop: 17072, Start Num: 11

Candidate Starts for Skog\_36:

(Start: 11 @16728 has 3 MA's), (18, 16794), (24, 16905), (35, 17055), (36, 17061),

Gene: Teamocil\_84 Start: 46821, Stop: 47126, Start Num: 13

Candidate Starts for Teamocil\_84:

(Start: 13 @46821 has 3 MA's), (15, 46833), (19, 46890), (23, 46959), (25, 46983), (26, 46989), (27, 47001), (29, 47052), (34, 47103),

Gene: Yvonnetastic\_199 Start: 95310, Stop: 95026, Start Num: 12

Candidate Starts for Yvonnetastic\_199:

(Start: 12 @95310 has 2 MA's), (20, 95223), (30, 95070), (31, 95058), (32, 95043),