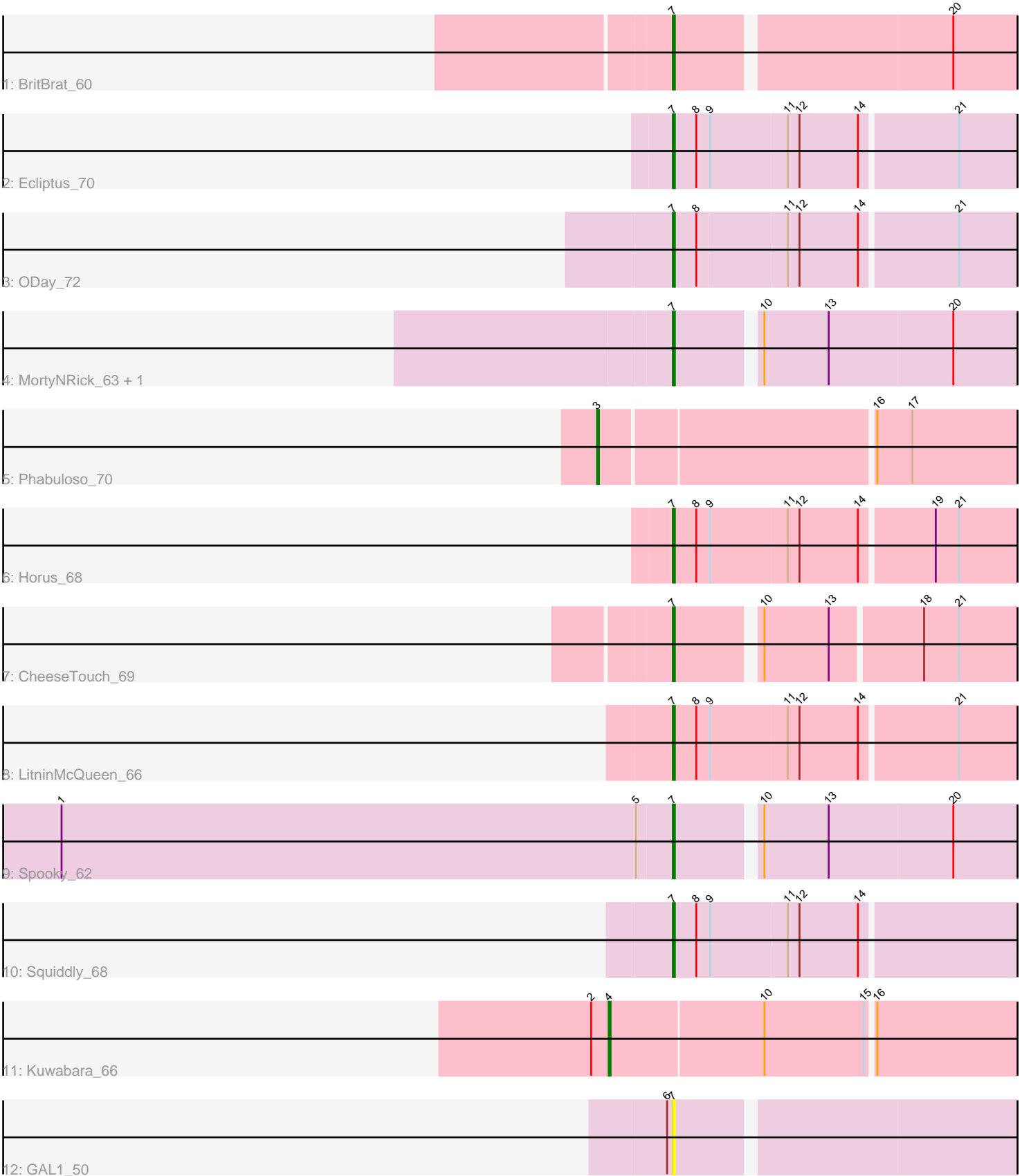


Pham 87421



Note: Tracks are now grouped by subcluster and scaled. Switching in subcluster is indicated by changes in track color. Track scale is now set by default to display the region 30 bp upstream of start 1 to 30 bp downstream of the last possible start. If this default region is judged to be packed too tightly with annotated starts, the track will be further scaled to only show that region of the ORF with annotated starts. This action will be indicated by adding "Zoomed" to the title. For starts, yellow indicates the location of called starts comprised solely of Glimmer/GeneMark auto-annotations, green indicates the location of called starts with at least 1 manual gene annotation.

Pham 87421 Report

This analysis was run 04/05/24 on database version 557.

Pham number 87421 has 13 members, 2 are drafts.

Phages represented in each track:

- Track 1 : BritBrat_60
- Track 2 : Ecliptus_70
- Track 3 : ODay_72
- Track 4 : MortyNRick_63, BearBQ_65
- Track 5 : Phabuloso_70
- Track 6 : Horus_68
- Track 7 : CheeseTouch_69
- Track 8 : LitninMcQueen_66
- Track 9 : Spooky_62
- Track 10 : Squiddly_68
- Track 11 : Kuwabara_66
- Track 12 : GAL1_50

Summary of Final Annotations (See graph section above for start numbers):

The start number called the most often in the published annotations is 7, it was called in 9 of the 11 non-draft genes in the pham.

Genes that call this "Most Annotated" start:

- BearBQ_65, BritBrat_60, CheeseTouch_69, Ecliptus_70, GAL1_50, Horus_68, LitninMcQueen_66, MortyNRick_63, ODay_72, Spooky_62, Squiddly_68,

Genes that have the "Most Annotated" start but do not call it:

-

Genes that do not have the "Most Annotated" start:

- Kuwabara_66, Phabuloso_70,

Summary by start number:

Start 3:

- Found in 1 of 13 (7.7%) of genes in pham
- Manual Annotations of this start: 1 of 11
- Called 100.0% of time when present

- Phage (with cluster) where this start called: Phabuloso_70 (DN1),

Start 4:

- Found in 1 of 13 (7.7%) of genes in pham
- Manual Annotations of this start: 1 of 11
- Called 100.0% of time when present
- Phage (with cluster) where this start called: Kuwabara_66 (DN4),

Start 7:

- Found in 11 of 13 (84.6%) of genes in pham
- Manual Annotations of this start: 9 of 11
- Called 100.0% of time when present
- Phage (with cluster) where this start called: BearBQ_65 (DN), BritBrat_60 (CY2), CheeseTouch_69 (DN1), Ecliptus_70 (DN), GAL1_50 (singleton), Horus_68 (DN1), LitninMcQueen_66 (DN1), MortyNRick_63 (DN), ODay_72 (DN), Spooky_62 (DN2), Squiddly_68 (DN2),

Summary by clusters:

There are 6 clusters represented in this pham: DN, CY2, singleton, DN4, DN1, DN2,

Info for manual annotations of cluster CY2:

- Start number 7 was manually annotated 1 time for cluster CY2.

Info for manual annotations of cluster DN:

- Start number 7 was manually annotated 3 times for cluster DN.

Info for manual annotations of cluster DN1:

- Start number 3 was manually annotated 1 time for cluster DN1.
- Start number 7 was manually annotated 3 times for cluster DN1.

Info for manual annotations of cluster DN2:

- Start number 7 was manually annotated 2 times for cluster DN2.

Info for manual annotations of cluster DN4:

- Start number 4 was manually annotated 1 time for cluster DN4.

Gene Information:

Gene: BearBQ_65 Start: 41742, Stop: 41960, Start Num: 7

Candidate Starts for BearBQ_65:

(Start: 7 @41742 has 9 MA's), (10, 41781), (13, 41814), (20, 41877),

Gene: BritBrat_60 Start: 41074, Stop: 41292, Start Num: 7

Candidate Starts for BritBrat_60:

(Start: 7 @41074 has 9 MA's), (20, 41209),

Gene: CheeseTouch_69 Start: 37175, Stop: 37390, Start Num: 7

Candidate Starts for CheeseTouch_69:

(Start: 7 @37175 has 9 MA's), (10, 37214), (13, 37247), (18, 37292), (21, 37310),

Gene: Ecliptus_70 Start: 42604, Stop: 42825, Start Num: 7

Candidate Starts for Ecliptus_70:

(Start: 7 @42604 has 9 MA's), (8, 42616), (9, 42622), (11, 42661), (12, 42667), (14, 42697), (21, 42745),

Gene: GAL1_50 Start: 35370, Stop: 35588, Start Num: 7

Candidate Starts for GAL1_50:

(6, 35367), (Start: 7 @35370 has 9 MA's),

Gene: Horus_68 Start: 41809, Stop: 42030, Start Num: 7

Candidate Starts for Horus_68:

(Start: 7 @41809 has 9 MA's), (8, 41821), (9, 41827), (11, 41866), (12, 41872), (14, 41902), (19, 41938), (21, 41950),

Gene: Kuwabara_66 Start: 41575, Stop: 41829, Start Num: 4

Candidate Starts for Kuwabara_66:

(2, 41566), (Start: 4 @41575 has 1 MA's), (10, 41653), (15, 41704), (16, 41707),

Gene: LitninMcQueen_66 Start: 40759, Stop: 40980, Start Num: 7

Candidate Starts for LitninMcQueen_66:

(Start: 7 @40759 has 9 MA's), (8, 40771), (9, 40777), (11, 40816), (12, 40822), (14, 40852), (21, 40900),

Gene: MortyNRick_63 Start: 41867, Stop: 42085, Start Num: 7

Candidate Starts for MortyNRick_63:

(Start: 7 @41867 has 9 MA's), (10, 41906), (13, 41939), (20, 42002),

Gene: ODay_72 Start: 42752, Stop: 42973, Start Num: 7

Candidate Starts for ODay_72:

(Start: 7 @42752 has 9 MA's), (8, 42764), (11, 42809), (12, 42815), (14, 42845), (21, 42893),

Gene: Phabuloso_70 Start: 41178, Stop: 41435, Start Num: 3

Candidate Starts for Phabuloso_70:

(Start: 3 @41178 has 1 MA's), (16, 41313), (17, 41331),

Gene: Spooky_62 Start: 39581, Stop: 39799, Start Num: 7

Candidate Starts for Spooky_62:

(1, 39269), (5, 39563), (Start: 7 @39581 has 9 MA's), (10, 39620), (13, 39653), (20, 39716),

Gene: Squiddly_68 Start: 44420, Stop: 44641, Start Num: 7

Candidate Starts for Squiddly_68:

(Start: 7 @44420 has 9 MA's), (8, 44432), (9, 44438), (11, 44477), (12, 44483), (14, 44513),