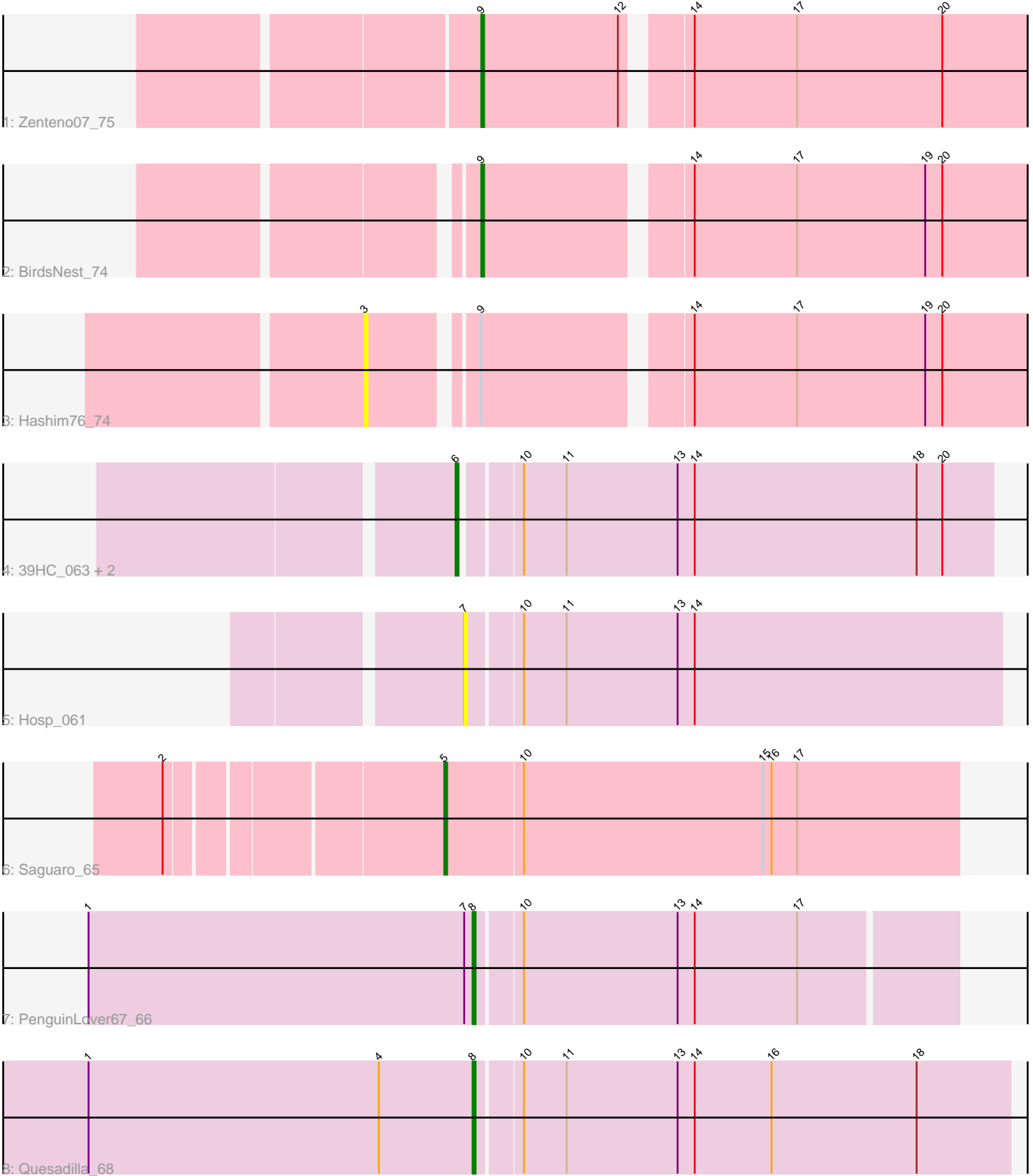


Pham 87554



Note: Tracks are now grouped by subcluster and scaled. Switching in subcluster is indicated by changes in track color. Track scale is now set by default to display the region 30 bp upstream of start 1 to 30 bp downstream of the last possible start. If this default region is judged to be packed too tightly with annotated starts, the track will be further scaled to only show that region of the ORF with annotated starts. This action will be indicated by adding "Zoomed" to the title. For starts, yellow indicates the location of called starts comprised solely of Glimmer/GeneMark auto-annotations, green indicates the location of called starts with at least 1 manual gene annotation.

## Pham 87554 Report

This analysis was run 04/05/24 on database version 557.

Pham number 87554 has 10 members, 4 are drafts.

Phages represented in each track:

- Track 1 : Zenteno07\_75
- Track 2 : BirdsNest\_74
- Track 3 : Hashim76\_74
- Track 4 : 39HC\_063, KayaCho\_63, 40BC\_063
- Track 5 : Hosp\_061
- Track 6 : Saguaro\_65
- Track 7 : PenguinLover67\_66
- Track 8 : Quesadilla\_68

### ***Summary of Final Annotations (See graph section above for start numbers):***

The start number called the most often in the published annotations is 8, it was called in 2 of the 6 non-draft genes in the pham.

Genes that call this "Most Annotated" start:

- PenguinLover67\_66, Quesadilla\_68,

Genes that have the "Most Annotated" start but do not call it:

- 

Genes that do not have the "Most Annotated" start:

- 39HC\_063, 40BC\_063, BirdsNest\_74, Hashim76\_74, Hosp\_061, KayaCho\_63, Saguaro\_65, Zenteno07\_75,

### **Summary by start number:**

Start 3:

- Found in 1 of 10 ( 10.0% ) of genes in pham
- No Manual Annotations of this start.
- Called 100.0% of time when present
- Phage (with cluster) where this start called: Hashim76\_74 (B13),

Start 5:

- Found in 1 of 10 ( 10.0% ) of genes in pham

- Manual Annotations of this start: 1 of 6
- Called 100.0% of time when present
- Phage (with cluster) where this start called: Saguaro\_65 (B7),

Start 6:

- Found in 3 of 10 ( 30.0% ) of genes in pham
- Manual Annotations of this start: 1 of 6
- Called 100.0% of time when present
- Phage (with cluster) where this start called: 39HC\_063 (B6), 40BC\_063 (B6), KayaCho\_63 (B6),

Start 7:

- Found in 2 of 10 ( 20.0% ) of genes in pham
- No Manual Annotations of this start.
- Called 50.0% of time when present
- Phage (with cluster) where this start called: Hosp\_061 (B6),

Start 8:

- Found in 2 of 10 ( 20.0% ) of genes in pham
- Manual Annotations of this start: 2 of 6
- Called 100.0% of time when present
- Phage (with cluster) where this start called: PenguinLover67\_66 (B9), Quesadilla\_68 (B9),

Start 9:

- Found in 3 of 10 ( 30.0% ) of genes in pham
- Manual Annotations of this start: 2 of 6
- Called 66.7% of time when present
- Phage (with cluster) where this start called: BirdsNest\_74 (B13), Zenteno07\_75 (B13),

### **Summary by clusters:**

There are 4 clusters represented in this pham: B6, B7, B13, B9,

Info for manual annotations of cluster B13:

- Start number 9 was manually annotated 2 times for cluster B13.

Info for manual annotations of cluster B6:

- Start number 6 was manually annotated 1 time for cluster B6.

Info for manual annotations of cluster B7:

- Start number 5 was manually annotated 1 time for cluster B7.

Info for manual annotations of cluster B9:

- Start number 8 was manually annotated 2 times for cluster B9.

### **Gene Information:**

Gene: 39HC\_063 Start: 56875, Stop: 57057, Start Num: 6

Candidate Starts for 39HC\_063:

(Start: 6 @56875 has 1 MA's), (10, 56893), (11, 56908), (13, 56947), (14, 56953), (18, 57031), (20, 57040),

Gene: 40BC\_063 Start: 56875, Stop: 57057, Start Num: 6

Candidate Starts for 40BC\_063:

(Start: 6 @56875 has 1 MA's), (10, 56893), (11, 56908), (13, 56947), (14, 56953), (18, 57031), (20, 57040),

Gene: BirdsNest\_74 Start: 58989, Stop: 59204, Start Num: 9

Candidate Starts for BirdsNest\_74:

(Start: 9 @58989 has 2 MA's), (14, 59055), (17, 59091), (19, 59136), (20, 59142),

Gene: Hashim76\_74 Start: 58941, Stop: 59189, Start Num: 3

Candidate Starts for Hashim76\_74:

(3, 58941), (Start: 9 @58974 has 2 MA's), (14, 59040), (17, 59076), (19, 59121), (20, 59127),

Gene: Hosp\_061 Start: 54981, Stop: 55166, Start Num: 7

Candidate Starts for Hosp\_061:

(7, 54981), (10, 54999), (11, 55014), (13, 55053), (14, 55059),

Gene: KayaCho\_63 Start: 57007, Stop: 57189, Start Num: 6

Candidate Starts for KayaCho\_63:

(Start: 6 @57007 has 1 MA's), (10, 57025), (11, 57040), (13, 57079), (14, 57085), (18, 57163), (20, 57172),

Gene: PenguinLover67\_66 Start: 58371, Stop: 58535, Start Num: 8

Candidate Starts for PenguinLover67\_66:

(1, 58236), (7, 58368), (Start: 8 @58371 has 2 MA's), (10, 58386), (13, 58440), (14, 58446), (17, 58482),

Gene: Quesadilla\_68 Start: 58652, Stop: 58837, Start Num: 8

Candidate Starts for Quesadilla\_68:

(1, 58517), (4, 58619), (Start: 8 @58652 has 2 MA's), (10, 58667), (11, 58682), (13, 58721), (14, 58727), (16, 58754), (18, 58805),

Gene: Saguaro\_65 Start: 57832, Stop: 58011, Start Num: 5

Candidate Starts for Saguaro\_65:

(2, 57742), (Start: 5 @57832 has 1 MA's), (10, 57859), (15, 57943), (16, 57946), (17, 57955),

Gene: Zenteno07\_75 Start: 59180, Stop: 59383, Start Num: 9

Candidate Starts for Zenteno07\_75:

(Start: 9 @59180 has 2 MA's), (12, 59228), (14, 59246), (17, 59282), (20, 59333),