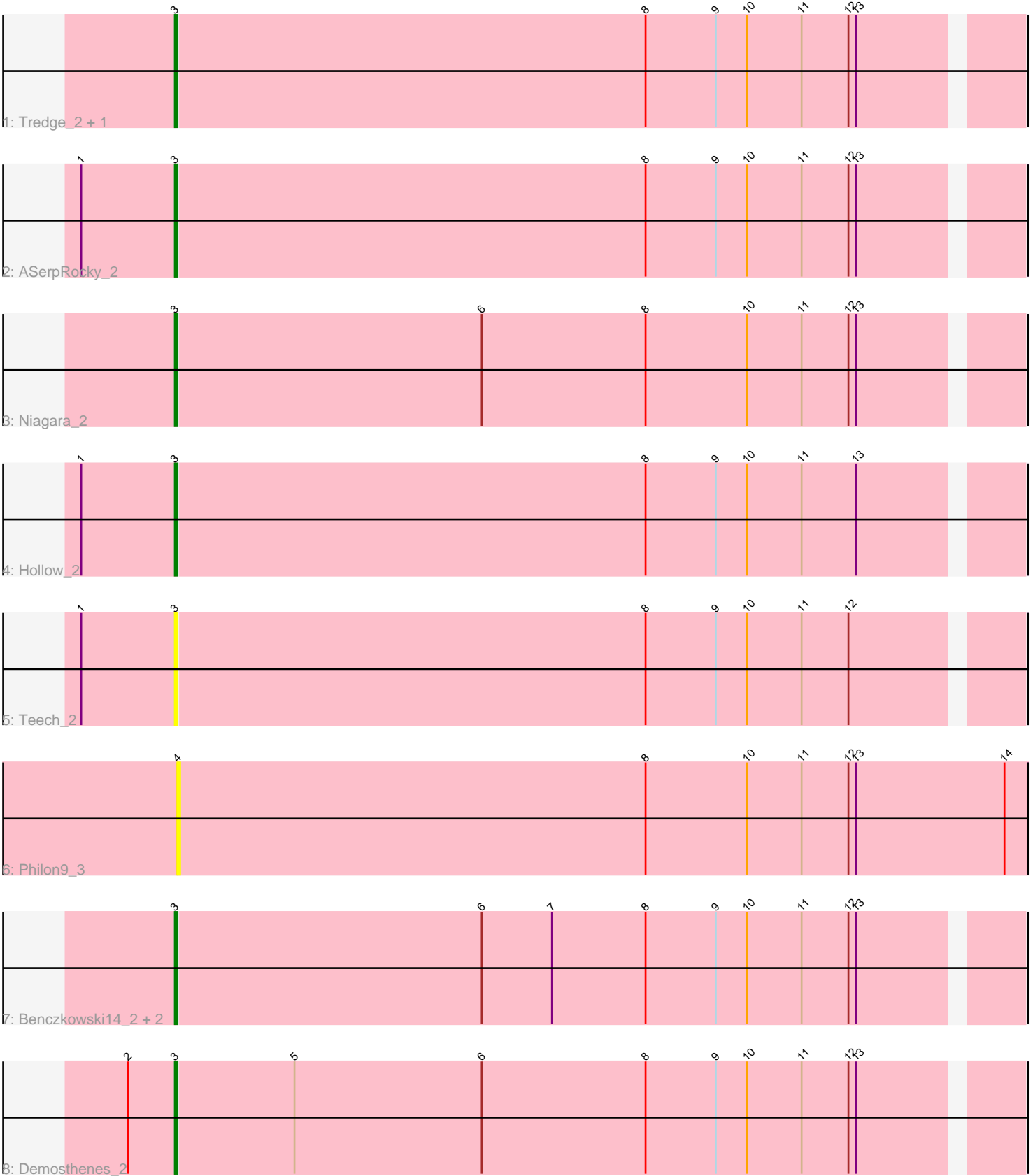


Pham 87581



Note: Tracks are now grouped by subcluster and scaled. Switching in subcluster is indicated by changes in track color. Track scale is now set by default to display the region 30 bp upstream of start 1 to 30 bp downstream of the last possible start. If this default region is judged to be packed too tightly with annotated starts, the track will be further scaled to only show that region of the ORF with annotated starts. This action will be indicated by adding "Zoomed" to the title. For starts, yellow indicates the location of called starts comprised solely of Glimmer/GeneMark auto-annotations, green indicates the location of called starts with at least 1 manual gene annotation.

Pham 87581 Report

This analysis was run 04/05/24 on database version 557.

Pham number 87581 has 11 members, 2 are drafts.

Phages represented in each track:

- Track 1 : Tredge_2, Teatealatte_2
- Track 2 : ASerpRocky_2
- Track 3 : Niagara_2
- Track 4 : Hollow_2
- Track 5 : Teech_2
- Track 6 : Philon9_3
- Track 7 : Benczkowski14_2, Katyusha_2, Kvothe_2
- Track 8 : Demosthenes_2

Summary of Final Annotations (See graph section above for start numbers):

The start number called the most often in the published annotations is 3, it was called in 9 of the 9 non-draft genes in the pham.

Genes that call this "Most Annotated" start:

- ASerpRocky_2, Benczkowski14_2, Demosthenes_2, Hollow_2, Katyusha_2, Kvothe_2, Niagara_2, Teatealatte_2, Teech_2, Tredge_2,

Genes that have the "Most Annotated" start but do not call it:

-

Genes that do not have the "Most Annotated" start:

- Philon9_3,

Summary by start number:

Start 3:

- Found in 10 of 11 (90.9%) of genes in pham
- Manual Annotations of this start: 9 of 9
- Called 100.0% of time when present
- Phage (with cluster) where this start called: ASerpRocky_2 (CS4), Benczkowski14_2 (CS4), Demosthenes_2 (CS4), Hollow_2 (CS4), Katyusha_2 (CS4), Kvothe_2 (CS4), Niagara_2 (CS4), Teatealatte_2 (CS4), Teech_2 (CS4), Tredge_2 (CS4),

Start 4:

- Found in 1 of 11 (9.1%) of genes in pham
- No Manual Annotations of this start.
- Called 100.0% of time when present
- Phage (with cluster) where this start called: Philon9_3 (CS4),

Summary by clusters:

There is one cluster represented in this pham: CS4

Info for manual annotations of cluster CS4:

- Start number 3 was manually annotated 9 times for cluster CS4.

Gene Information:

Gene: ASerpRocky_2 Start: 3175, Stop: 2858, Start Num: 3

Candidate Starts for ASerpRocky_2:

(1, 3211), (Start: 3 @3175 has 9 MA's), (8, 2995), (9, 2968), (10, 2956), (11, 2935), (12, 2917), (13, 2914),

Gene: Benczkowski14_2 Start: 3238, Stop: 2921, Start Num: 3

Candidate Starts for Benczkowski14_2:

(Start: 3 @3238 has 9 MA's), (6, 3121), (7, 3094), (8, 3058), (9, 3031), (10, 3019), (11, 2998), (12, 2980), (13, 2977),

Gene: Demosthenes_2 Start: 3135, Stop: 2818, Start Num: 3

Candidate Starts for Demosthenes_2:

(2, 3153), (Start: 3 @3135 has 9 MA's), (5, 3090), (6, 3018), (8, 2955), (9, 2928), (10, 2916), (11, 2895), (12, 2877), (13, 2874),

Gene: Hollow_2 Start: 3173, Stop: 2856, Start Num: 3

Candidate Starts for Hollow_2:

(1, 3209), (Start: 3 @3173 has 9 MA's), (8, 2993), (9, 2966), (10, 2954), (11, 2933), (13, 2912),

Gene: Katyusha_2 Start: 3238, Stop: 2921, Start Num: 3

Candidate Starts for Katyusha_2:

(Start: 3 @3238 has 9 MA's), (6, 3121), (7, 3094), (8, 3058), (9, 3031), (10, 3019), (11, 2998), (12, 2980), (13, 2977),

Gene: Kvothe_2 Start: 3193, Stop: 2876, Start Num: 3

Candidate Starts for Kvothe_2:

(Start: 3 @3193 has 9 MA's), (6, 3076), (7, 3049), (8, 3013), (9, 2986), (10, 2974), (11, 2953), (12, 2935), (13, 2932),

Gene: Niagara_2 Start: 3195, Stop: 2878, Start Num: 3

Candidate Starts for Niagara_2:

(Start: 3 @3195 has 9 MA's), (6, 3078), (8, 3015), (10, 2976), (11, 2955), (12, 2937), (13, 2934),

Gene: Philon9_3 Start: 2701, Stop: 2375, Start Num: 4

Candidate Starts for Philon9_3:

(4, 2701), (8, 2521), (10, 2482), (11, 2461), (12, 2443), (13, 2440), (14, 2383),

Gene: Teatealatte_2 Start: 3158, Stop: 2841, Start Num: 3

Candidate Starts for Teatealatte_2:

(Start: 3 @3158 has 9 MA's), (8, 2978), (9, 2951), (10, 2939), (11, 2918), (12, 2900), (13, 2897),

Gene: Teech_2 Start: 3230, Stop: 2913, Start Num: 3

Candidate Starts for Teech_2:

(1, 3266), (Start: 3 @3230 has 9 MA's), (8, 3050), (9, 3023), (10, 3011), (11, 2990), (12, 2972),

Gene: Tredge_2 Start: 3158, Stop: 2841, Start Num: 3

Candidate Starts for Tredge_2:

(Start: 3 @3158 has 9 MA's), (8, 2978), (9, 2951), (10, 2939), (11, 2918), (12, 2900), (13, 2897),