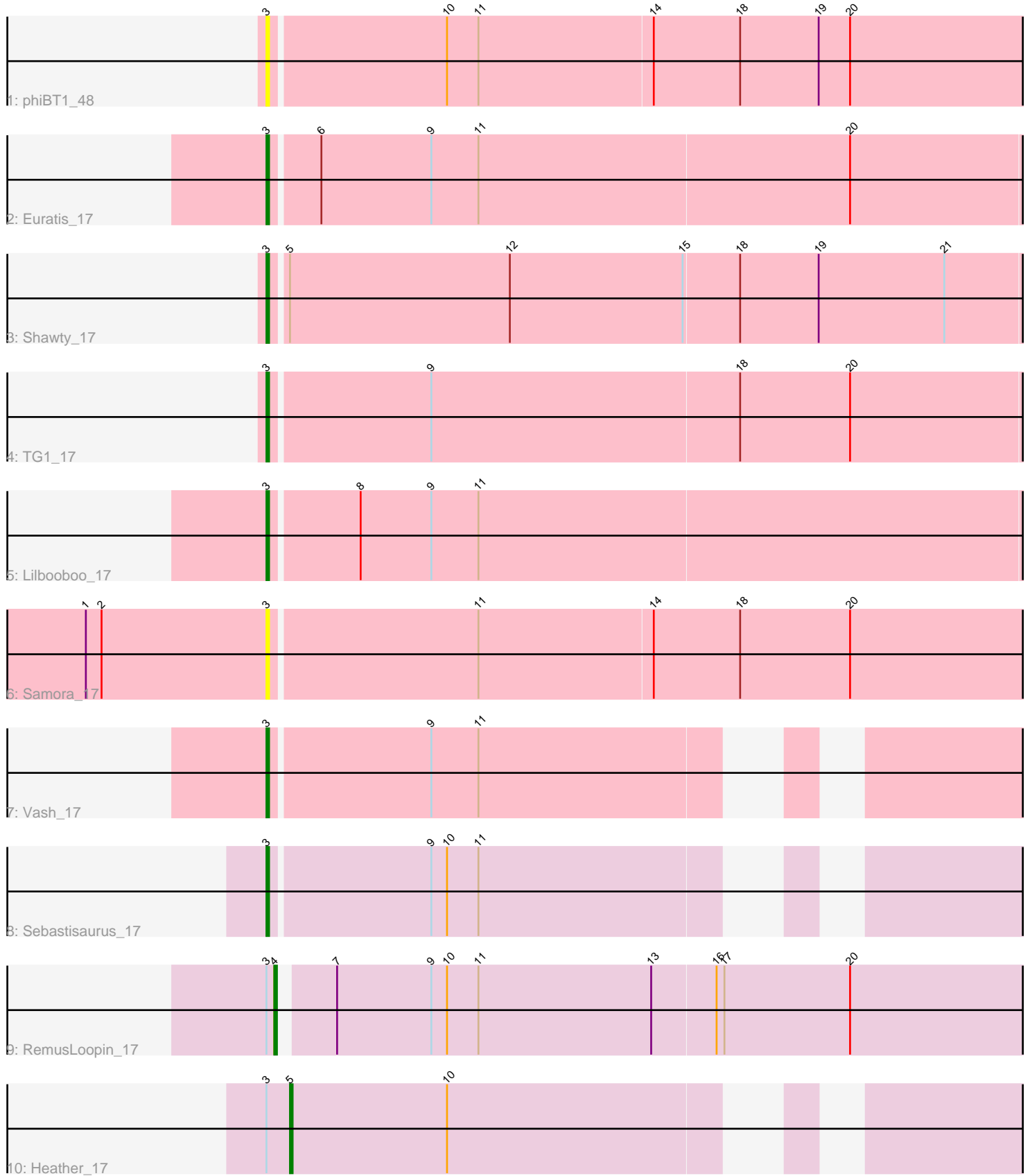


Pham 87600



Note: Tracks are now grouped by subcluster and scaled. Switching in subcluster is indicated by changes in track color. Track scale is now set by default to display the region 30 bp upstream of start 1 to 30 bp downstream of the last possible start. If this default region is judged to be packed too tightly with annotated starts, the track will be further scaled to only show that region of the ORF with annotated starts. This action will be indicated by adding "Zoomed" to the title. For starts, yellow indicates the location of called starts comprised solely of Glimmer/GeneMark auto-annotations, green indicates the location of called starts with at least 1 manual gene annotation.

Pham 87600 Report

This analysis was run 04/28/24 on database version 559.

Pham number 87600 has 10 members, 2 are drafts.

Phages represented in each track:

- Track 1 : phiBT1_48
- Track 2 : Euratis_17
- Track 3 : Shawty_17
- Track 4 : TG1_17
- Track 5 : Lilbooboo_17
- Track 6 : Samora_17
- Track 7 : Vash_17
- Track 8 : Sebastisaurus_17
- Track 9 : RemusLoopin_17
- Track 10 : Heather_17

Summary of Final Annotations (See graph section above for start numbers):

The start number called the most often in the published annotations is 3, it was called in 6 of the 8 non-draft genes in the pham.

Genes that call this "Most Annotated" start:

- Euratis_17, Lilbooboo_17, Samora_17, Sebastisaurus_17, Shawty_17, TG1_17, Vash_17, phiBT1_48,

Genes that have the "Most Annotated" start but do not call it:

- Heather_17, RemusLoopin_17,

Genes that do not have the "Most Annotated" start:

•

Summary by start number:

Start 3:

- Found in 10 of 10 (100.0%) of genes in pham
- Manual Annotations of this start: 6 of 8
- Called 80.0% of time when present
- Phage (with cluster) where this start called: Euratis_17 (BB1), Lilbooboo_17 (BB1), Samora_17 (BB1), Sebastisaurus_17 (BB2), Shawty_17 (BB1), TG1_17 (BB1),

Vash_17 (BB1), phiBT1_48 (BB1),

Start 4:

- Found in 1 of 10 (10.0%) of genes in pham
- Manual Annotations of this start: 1 of 8
- Called 100.0% of time when present
- Phage (with cluster) where this start called: RemusLoopin_17 (BB2),

Start 5:

- Found in 2 of 10 (20.0%) of genes in pham
- Manual Annotations of this start: 1 of 8
- Called 50.0% of time when present
- Phage (with cluster) where this start called: Heather_17 (BB2),

Summary by clusters:

There are 2 clusters represented in this pham: BB2, BB1,

Info for manual annotations of cluster BB1:

- Start number 3 was manually annotated 5 times for cluster BB1.

Info for manual annotations of cluster BB2:

- Start number 3 was manually annotated 1 time for cluster BB2.
- Start number 4 was manually annotated 1 time for cluster BB2.
- Start number 5 was manually annotated 1 time for cluster BB2.

Gene Information:

Gene: Euratis_17 Start: 14041, Stop: 14334, Start Num: 3

Candidate Starts for Euratis_17:

(Start: 3 @14041 has 6 MA's), (6, 14059), (9, 14101), (11, 14119), (20, 14260),

Gene: Heather_17 Start: 14003, Stop: 14260, Start Num: 5

Candidate Starts for Heather_17:

(Start: 3 @13994 has 6 MA's), (Start: 5 @14003 has 1 MA's), (10, 14063),

Gene: Lilbooboo_17 Start: 14057, Stop: 14347, Start Num: 3

Candidate Starts for Lilbooboo_17:

(Start: 3 @14057 has 6 MA's), (8, 14090), (9, 14117), (11, 14135),

Gene: RemusLoopin_17 Start: 14036, Stop: 14335, Start Num: 4

Candidate Starts for RemusLoopin_17:

(Start: 3 @14033 has 6 MA's), (Start: 4 @14036 has 1 MA's), (7, 14054), (9, 14090), (10, 14096), (11, 14108), (13, 14174), (16, 14198), (17, 14201), (20, 14249),

Gene: Samora_17 Start: 14235, Stop: 14540, Start Num: 3

Candidate Starts for Samora_17:

(1, 14166), (2, 14172), (Start: 3 @14235 has 6 MA's), (11, 14313), (14, 14379), (18, 14412), (20, 14454),

Gene: Sebastisaurus_17 Start: 14020, Stop: 14283, Start Num: 3

Candidate Starts for Sebastisaurus_17:

(Start: 3 @14020 has 6 MA's), (9, 14080), (10, 14086), (11, 14098),

Gene: Shawty_17 Start: 14157, Stop: 14447, Start Num: 3

Candidate Starts for Shawty_17:

(Start: 3 @14157 has 6 MA's), (Start: 5 @14163 has 1 MA's), (12, 14247), (15, 14313), (18, 14334), (19, 14364), (21, 14412),

Gene: TG1_17 Start: 14008, Stop: 14298, Start Num: 3

Candidate Starts for TG1_17:

(Start: 3 @14008 has 6 MA's), (9, 14068), (18, 14185), (20, 14227),

Gene: Vash_17 Start: 14060, Stop: 14323, Start Num: 3

Candidate Starts for Vash_17:

(Start: 3 @14060 has 6 MA's), (9, 14120), (11, 14138),

Gene: phiBT1_48 Start: 14226, Stop: 14531, Start Num: 3

Candidate Starts for phiBT1_48:

(Start: 3 @14226 has 6 MA's), (10, 14292), (11, 14304), (14, 14370), (18, 14403), (19, 14433), (20, 14445),