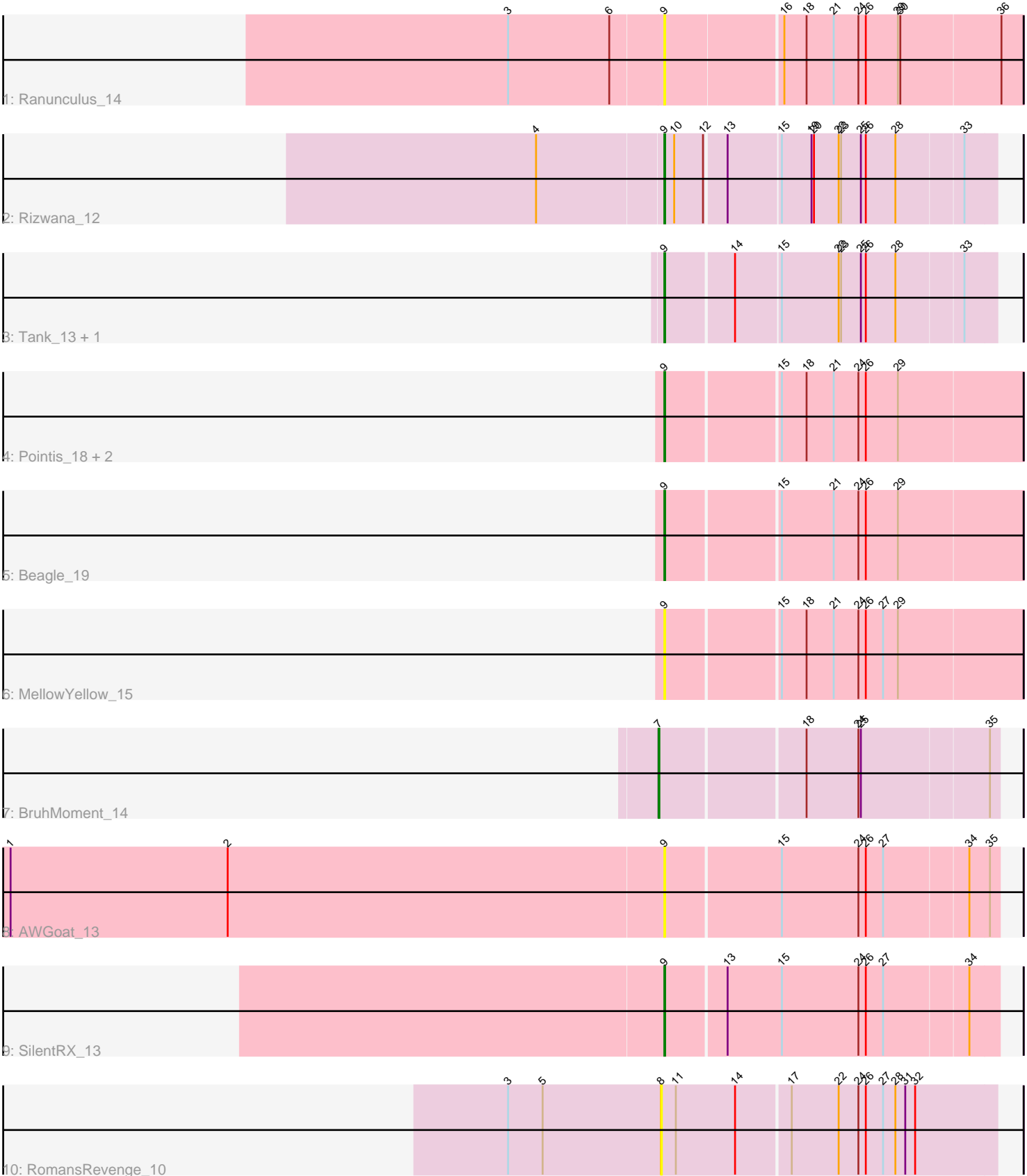


Pham 87648



Note: Tracks are now grouped by subcluster and scaled. Switching in subcluster is indicated by changes in track color. Track scale is now set by default to display the region 30 bp upstream of start 1 to 30 bp downstream of the last possible start. If this default region is judged to be packed too tightly with annotated starts, the track will be further scaled to only show that region of the ORF with annotated starts. This action will be indicated by adding "Zoomed" to the title. For starts, yellow indicates the location of called starts comprised solely of Glimmer/GeneMark auto-annotations, green indicates the location of called starts with at least 1 manual gene annotation.

Pham 87648 Report

This analysis was run 04/28/24 on database version 559.

Pham number 87648 has 13 members, 5 are drafts.

Phages represented in each track:

- Track 1 : Ranunculus_14
- Track 2 : Rizwana_12
- Track 3 : Tank_13, Wilde_13
- Track 4 : Pointis_18, Pureglobe5_20, Odyssey395_20
- Track 5 : Beagle_19
- Track 6 : MellowYellow_15
- Track 7 : BruhMoment_14
- Track 8 : AWGoat_13
- Track 9 : SilentRX_13
- Track 10 : RomansRevenge_10

Summary of Final Annotations (See graph section above for start numbers):

The start number called the most often in the published annotations is 9, it was called in 7 of the 8 non-draft genes in the pham.

Genes that call this "Most Annotated" start:

- AWGoat_13, Beagle_19, MellowYellow_15, Odyssey395_20, Pointis_18, Pureglobe5_20, Ranunculus_14, Rizwana_12, SilentRX_13, Tank_13, Wilde_13,

Genes that have the "Most Annotated" start but do not call it:

-

Genes that do not have the "Most Annotated" start:

- BruhMoment_14, RomansRevenge_10,

Summary by start number:

Start 7:

- Found in 1 of 13 (7.7%) of genes in pham
- Manual Annotations of this start: 1 of 8
- Called 100.0% of time when present
- Phage (with cluster) where this start called: BruhMoment_14 (AP3),

Start 8:

- Found in 1 of 13 (7.7%) of genes in pham
- No Manual Annotations of this start.
- Called 100.0% of time when present
- Phage (with cluster) where this start called: RomansRevenge_10 (singleton),

Start 9:

- Found in 11 of 13 (84.6%) of genes in pham
- Manual Annotations of this start: 7 of 8
- Called 100.0% of time when present
- Phage (with cluster) where this start called: AWGoat_13 (AP4), Beagle_19 (AP2), MellowYellow_15 (AP2), Odyssey395_20 (AP2), Pointis_18 (AP2), Pureglobe5_20 (AP2), Ranunculus_14 (AP), Rizwana_12 (AP1), SilentRX_13 (AP4), Tank_13 (AP1), Wilde_13 (AP1),

Summary by clusters:

There are 6 clusters represented in this pham: singleton, AP2, AP3, AP1, AP4, AP,

Info for manual annotations of cluster AP1:

- Start number 9 was manually annotated 3 times for cluster AP1.

Info for manual annotations of cluster AP2:

- Start number 9 was manually annotated 3 times for cluster AP2.

Info for manual annotations of cluster AP3:

- Start number 7 was manually annotated 1 time for cluster AP3.

Info for manual annotations of cluster AP4:

- Start number 9 was manually annotated 1 time for cluster AP4.

Gene Information:

Gene: AWGoat_13 Start: 5541, Stop: 5933, Start Num: 9

Candidate Starts for AWGoat_13:

(1, 4749), (2, 5013), (Start: 9 @5541 has 7 MA's), (15, 5676), (24, 5769), (26, 5778), (27, 5799), (34, 5898), (35, 5922),

Gene: Beagle_19 Start: 6097, Stop: 6516, Start Num: 9

Candidate Starts for Beagle_19:

(Start: 9 @6097 has 7 MA's), (15, 6226), (21, 6289), (24, 6319), (26, 6328), (29, 6367),

Gene: BruhMoment_14 Start: 5813, Stop: 6208, Start Num: 7

Candidate Starts for BruhMoment_14:

(Start: 7 @5813 has 1 MA's), (18, 5981), (24, 6044), (25, 6047), (35, 6197),

Gene: MellowYellow_15 Start: 5554, Stop: 5973, Start Num: 9

Candidate Starts for MellowYellow_15:

(Start: 9 @5554 has 7 MA's), (15, 5683), (18, 5713), (21, 5746), (24, 5776), (26, 5785), (27, 5806), (29, 5824),

Gene: Odyssey395_20 Start: 6298, Stop: 6717, Start Num: 9

Candidate Starts for Odyssey395_20:

(Start: 9 @6298 has 7 MA's), (15, 6427), (18, 6457), (21, 6490), (24, 6520), (26, 6529), (29, 6568),

Gene: Pointis_18 Start: 6296, Stop: 6715, Start Num: 9

Candidate Starts for Pointis_18:

(Start: 9 @6296 has 7 MA's), (15, 6425), (18, 6455), (21, 6488), (24, 6518), (26, 6527), (29, 6566),

Gene: Pureglobe5_20 Start: 6312, Stop: 6731, Start Num: 9

Candidate Starts for Pureglobe5_20:

(Start: 9 @6312 has 7 MA's), (15, 6441), (18, 6471), (21, 6504), (24, 6534), (26, 6543), (29, 6582),

Gene: Ranunculus_14 Start: 5906, Stop: 6328, Start Num: 9

Candidate Starts for Ranunculus_14:

(3, 5720), (6, 5843), (Start: 9 @5906 has 7 MA's), (16, 6041), (18, 6068), (21, 6101), (24, 6131), (26, 6140), (29, 6179), (30, 6182), (36, 6302),

Gene: Rizwana_12 Start: 5604, Stop: 5987, Start Num: 9

Candidate Starts for Rizwana_12:

(4, 5454), (Start: 9 @5604 has 7 MA's), (10, 5616), (12, 5649), (13, 5673), (15, 5733), (19, 5769), (20, 5772), (22, 5802), (23, 5805), (25, 5829), (26, 5835), (28, 5871), (33, 5949),

Gene: RomansRevenge_10 Start: 4085, Stop: 4486, Start Num: 8

Candidate Starts for RomansRevenge_10:

(3, 3899), (5, 3941), (8, 4085), (11, 4103), (14, 4175), (17, 4238), (22, 4295), (24, 4319), (26, 4328), (27, 4349), (28, 4364), (31, 4376), (32, 4388),

Gene: SilentRX_13 Start: 5146, Stop: 5538, Start Num: 9

Candidate Starts for SilentRX_13:

(Start: 9 @5146 has 7 MA's), (13, 5215), (15, 5281), (24, 5374), (26, 5383), (27, 5404), (34, 5503),

Gene: Tank_13 Start: 5619, Stop: 6002, Start Num: 9

Candidate Starts for Tank_13:

(Start: 9 @5619 has 7 MA's), (14, 5697), (15, 5748), (22, 5817), (23, 5820), (25, 5844), (26, 5850), (28, 5886), (33, 5964),

Gene: Wilde_13 Start: 5547, Stop: 5930, Start Num: 9

Candidate Starts for Wilde_13:

(Start: 9 @5547 has 7 MA's), (14, 5625), (15, 5676), (22, 5745), (23, 5748), (25, 5772), (26, 5778), (28, 5814), (33, 5892),