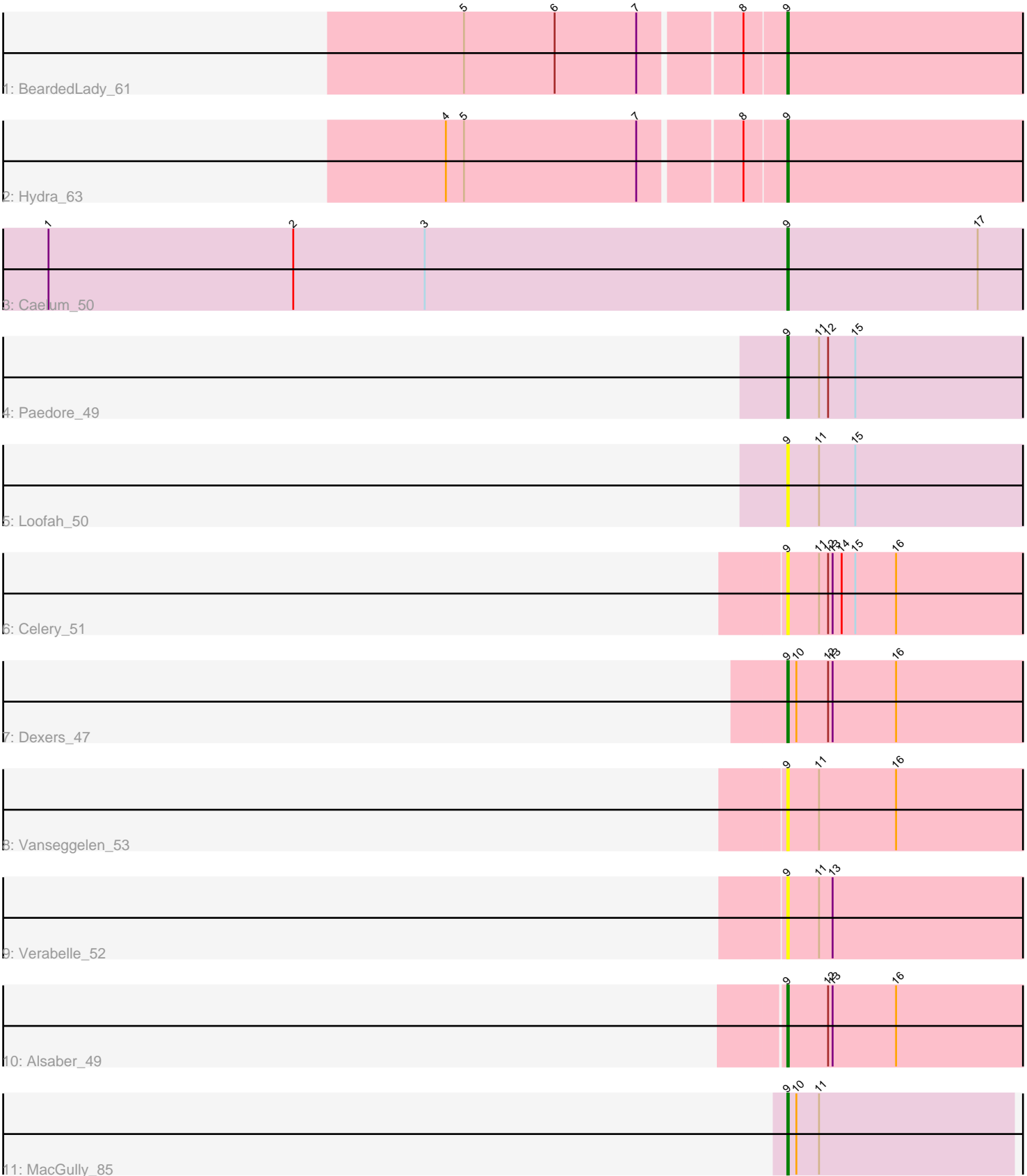


Pham 87795



Note: Tracks are now grouped by subcluster and scaled. Switching in subcluster is indicated by changes in track color. Track scale is now set by default to display the region 30 bp upstream of start 1 to 30 bp downstream of the last possible start. If this default region is judged to be packed too tightly with annotated starts, the track will be further scaled to only show that region of the ORF with annotated starts. This action will be indicated by adding "Zoomed" to the title. For starts, yellow indicates the location of called starts comprised solely of Glimmer/GeneMark auto-annotations, green indicates the location of called starts with at least 1 manual gene annotation.

Pham 87795 Report

This analysis was run 04/05/24 on database version 557.

Pham number 87795 has 11 members, 4 are drafts.

Phages represented in each track:

- Track 1 : BeardedLady_61
- Track 2 : Hydra_63
- Track 3 : Caelum_50
- Track 4 : Paedore_49
- Track 5 : Loofah_50
- Track 6 : Celery_51
- Track 7 : Dexers_47
- Track 8 : Vanseggelen_53
- Track 9 : Verabelle_52
- Track 10 : Alsaber_49
- Track 11 : MacGully_85

Summary of Final Annotations (See graph section above for start numbers):

The start number called the most often in the published annotations is 9, it was called in 7 of the 7 non-draft genes in the pham.

Genes that call this "Most Annotated" start:

- Alsaber_49, BeardedLady_61, Caelum_50, Celery_51, Dexers_47, Hydra_63, Loofah_50, MacGully_85, Paedore_49, Vanseggelen_53, Verabelle_52,

Genes that have the "Most Annotated" start but do not call it:

-

Genes that do not have the "Most Annotated" start:

-

Summary by start number:

Start 9:

- Found in 11 of 11 (100.0%) of genes in pham
- Manual Annotations of this start: 7 of 7
- Called 100.0% of time when present

- Phage (with cluster) where this start called: Alsaber_49 (BD3), BeardedLady_61 (BD1), Caelum_50 (BD2), Celery_51 (BD3), Dexers_47 (BD3), Hydra_63 (BD1), Loofah_50 (BD2), MacGully_85 (CR), Paedore_49 (BD2), Vanseggelen_53 (BD3), Verabelle_52 (BD3),

Summary by clusters:

There are 4 clusters represented in this pham: CR, BD1, BD3, BD2,

Info for manual annotations of cluster BD1:

- Start number 9 was manually annotated 2 times for cluster BD1.

Info for manual annotations of cluster BD2:

- Start number 9 was manually annotated 2 times for cluster BD2.

Info for manual annotations of cluster BD3:

- Start number 9 was manually annotated 2 times for cluster BD3.

Info for manual annotations of cluster CR:

- Start number 9 was manually annotated 1 time for cluster CR.

Gene Information:

Gene: Alsaber_49 Start: 35445, Stop: 35612, Start Num: 9

Candidate Starts for Alsaber_49:

(Start: 9 @35445 has 7 MA's), (12, 35472), (13, 35475), (16, 35517),

Gene: BeardedLady_61 Start: 43322, Stop: 43155, Start Num: 9

Candidate Starts for BeardedLady_61:

(5, 43526), (6, 43466), (7, 43412), (8, 43349), (Start: 9 @43322 has 7 MA's),

Gene: Caelum_50 Start: 34878, Stop: 35045, Start Num: 9

Candidate Starts for Caelum_50:

(1, 34389), (2, 34551), (3, 34638), (Start: 9 @34878 has 7 MA's), (17, 35004),

Gene: Celery_51 Start: 35409, Stop: 35576, Start Num: 9

Candidate Starts for Celery_51:

(Start: 9 @35409 has 7 MA's), (11, 35430), (12, 35436), (13, 35439), (14, 35445), (15, 35454), (16, 35481),

Gene: Dexers_47 Start: 35350, Stop: 35517, Start Num: 9

Candidate Starts for Dexers_47:

(Start: 9 @35350 has 7 MA's), (10, 35356), (12, 35377), (13, 35380), (16, 35422),

Gene: Hydra_63 Start: 44130, Stop: 43963, Start Num: 9

Candidate Starts for Hydra_63:

(4, 44346), (5, 44334), (7, 44220), (8, 44157), (Start: 9 @44130 has 7 MA's),

Gene: Loofah_50 Start: 35392, Stop: 35559, Start Num: 9

Candidate Starts for Loofah_50:

(Start: 9 @35392 has 7 MA's), (11, 35413), (15, 35437),

Gene: MacGully_85 Start: 58267, Stop: 58118, Start Num: 9

Candidate Starts for MacGully_85:

(Start: 9 @58267 has 7 MA's), (10, 58261), (11, 58246),

Gene: Paedore_49 Start: 35377, Stop: 35544, Start Num: 9

Candidate Starts for Paedore_49:

(Start: 9 @35377 has 7 MA's), (11, 35398), (12, 35404), (15, 35422),

Gene: Vanseggelen_53 Start: 35110, Stop: 35277, Start Num: 9

Candidate Starts for Vanseggelen_53:

(Start: 9 @35110 has 7 MA's), (11, 35131), (16, 35182),

Gene: Verabelle_52 Start: 35627, Stop: 35794, Start Num: 9

Candidate Starts for Verabelle_52:

(Start: 9 @35627 has 7 MA's), (11, 35648), (13, 35657),