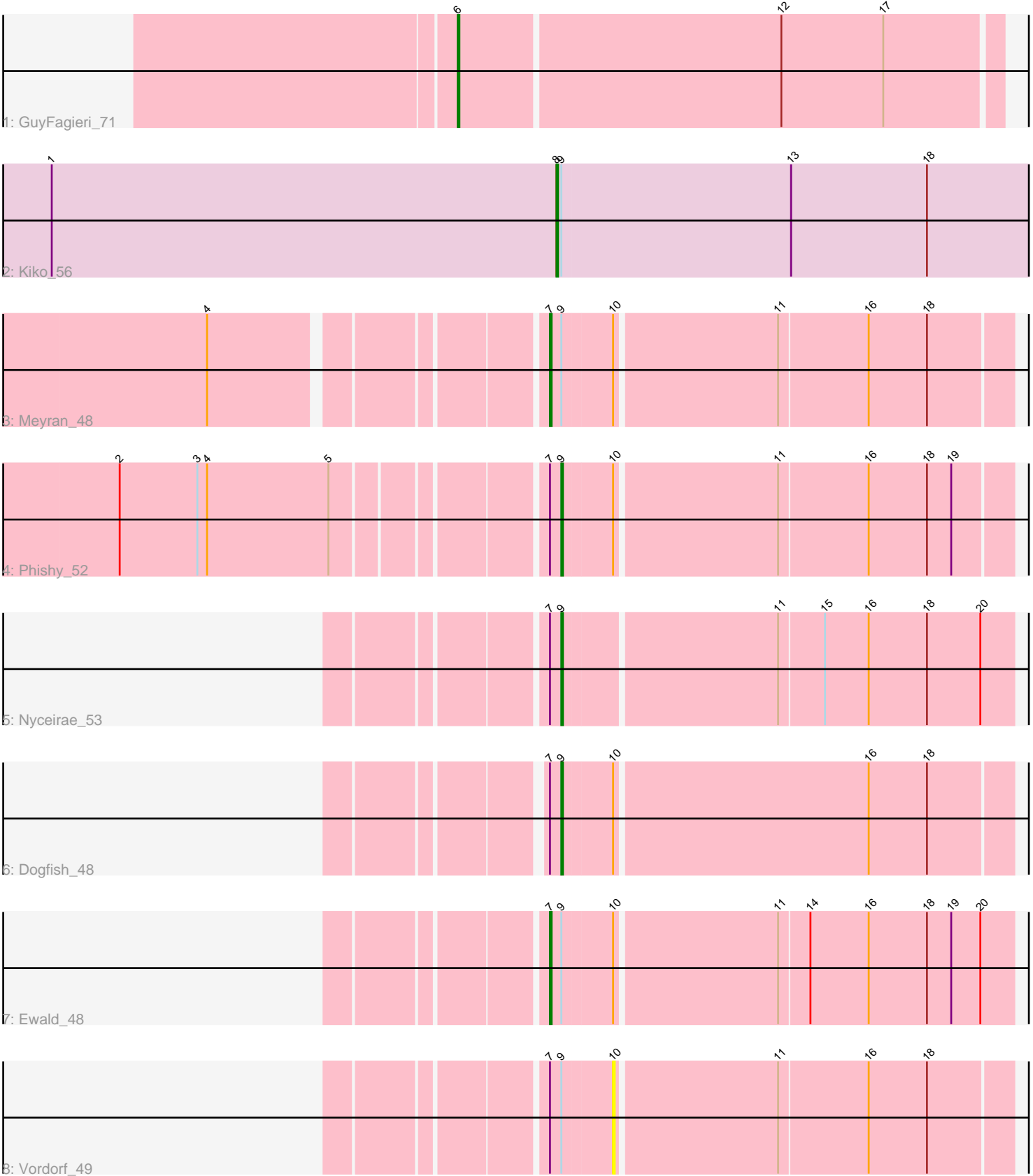


Pham 87889



Note: Tracks are now grouped by subcluster and scaled. Switching in subcluster is indicated by changes in track color. Track scale is now set by default to display the region 30 bp upstream of start 1 to 30 bp downstream of the last possible start. If this default region is judged to be packed too tightly with annotated starts, the track will be further scaled to only show that region of the ORF with annotated starts. This action will be indicated by adding "Zoomed" to the title. For starts, yellow indicates the location of called starts comprised solely of Glimmer/GeneMark auto-annotations, green indicates the location of called starts with at least 1 manual gene annotation.

## Pham 87889 Report

This analysis was run 04/28/24 on database version 559.

Pham number 87889 has 8 members, 1 are drafts.

Phages represented in each track:

- Track 1 : GuyFagieri\_71
- Track 2 : Kiko\_56
- Track 3 : Meyran\_48
- Track 4 : Phishy\_52
- Track 5 : Nyceirae\_53
- Track 6 : Dogfish\_48
- Track 7 : Ewald\_48
- Track 8 : Vordorf\_49

### ***Summary of Final Annotations (See graph section above for start numbers):***

The start number called the most often in the published annotations is 9, it was called in 3 of the 7 non-draft genes in the pham.

Genes that call this "Most Annotated" start:

- Dogfish\_48, Nyceirae\_53, Phishy\_52,

Genes that have the "Most Annotated" start but do not call it:

- Ewald\_48, Kiko\_56, Meyran\_48, Vordorf\_49,

Genes that do not have the "Most Annotated" start:

- GuyFagieri\_71,

### **Summary by start number:**

Start 6:

- Found in 1 of 8 ( 12.5% ) of genes in pham
- Manual Annotations of this start: 1 of 7
- Called 100.0% of time when present
- Phage (with cluster) where this start called: GuyFagieri\_71 (CR),

Start 7:

- Found in 6 of 8 ( 75.0% ) of genes in pham
- Manual Annotations of this start: 2 of 7

- Called 33.3% of time when present
- Phage (with cluster) where this start called: Ewald\_48 (DT), Meyran\_48 (DT),

Start 8:

- Found in 1 of 8 ( 12.5% ) of genes in pham
- Manual Annotations of this start: 1 of 7
- Called 100.0% of time when present
- Phage (with cluster) where this start called: Kiko\_56 (DB),

Start 9:

- Found in 7 of 8 ( 87.5% ) of genes in pham
- Manual Annotations of this start: 3 of 7
- Called 42.9% of time when present
- Phage (with cluster) where this start called: Dogfish\_48 (DT), Nyceirae\_53 (DT), Phishy\_52 (DT),

Start 10:

- Found in 5 of 8 ( 62.5% ) of genes in pham
- No Manual Annotations of this start.
- Called 20.0% of time when present
- Phage (with cluster) where this start called: Vordorf\_49 (DT),

### **Summary by clusters:**

There are 3 clusters represented in this pham: CR, DT, DB,

Info for manual annotations of cluster CR:

- Start number 6 was manually annotated 1 time for cluster CR.

Info for manual annotations of cluster DB:

- Start number 8 was manually annotated 1 time for cluster DB.

Info for manual annotations of cluster DT:

- Start number 7 was manually annotated 2 times for cluster DT.
- Start number 9 was manually annotated 3 times for cluster DT.

### **Gene Information:**

Gene: Dogfish\_48 Start: 36477, Stop: 36746, Start Num: 9

Candidate Starts for Dogfish\_48:

(Start: 7 @36471 has 2 MA's), (Start: 9 @36477 has 3 MA's), (10, 36507), (16, 36660), (18, 36696),

Gene: Ewald\_48 Start: 36287, Stop: 36562, Start Num: 7

Candidate Starts for Ewald\_48:

(Start: 7 @36287 has 2 MA's), (Start: 9 @36293 has 3 MA's), (10, 36323), (11, 36419), (14, 36437), (16, 36473), (18, 36509), (19, 36524), (20, 36542),

Gene: GuyFagieri\_71 Start: 53263, Stop: 52937, Start Num: 6

Candidate Starts for GuyFagieri\_71:

(Start: 6 @53263 has 1 MA's), (12, 53068), (17, 53005),

Gene: Kiko\_56 Start: 38922, Stop: 39218, Start Num: 8

Candidate Starts for Kiko\_56:

(1, 38610), (Start: 8 @38922 has 1 MA's), (Start: 9 @38925 has 3 MA's), (13, 39066), (18, 39150),

Gene: Meyran\_48 Start: 37391, Stop: 37663, Start Num: 7

Candidate Starts for Meyran\_48:

(4, 37205), (Start: 7 @37391 has 2 MA's), (Start: 9 @37397 has 3 MA's), (10, 37427), (11, 37523),  
(16, 37577), (18, 37613),

Gene: Nyceirae\_53 Start: 37419, Stop: 37688, Start Num: 9

Candidate Starts for Nyceirae\_53:

(Start: 7 @37413 has 2 MA's), (Start: 9 @37419 has 3 MA's), (11, 37545), (15, 37572), (16, 37599),  
(18, 37635), (20, 37668),

Gene: Phishy\_52 Start: 38370, Stop: 38636, Start Num: 9

Candidate Starts for Phishy\_52:

(2, 38118), (3, 38166), (4, 38172), (5, 38247), (Start: 7 @38364 has 2 MA's), (Start: 9 @38370 has 3  
MA's), (10, 38400), (11, 38496), (16, 38550), (18, 38586), (19, 38601),

Gene: Vordorf\_49 Start: 36690, Stop: 36926, Start Num: 10

Candidate Starts for Vordorf\_49:

(Start: 7 @36654 has 2 MA's), (Start: 9 @36660 has 3 MA's), (10, 36690), (11, 36786), (16, 36840),  
(18, 36876),