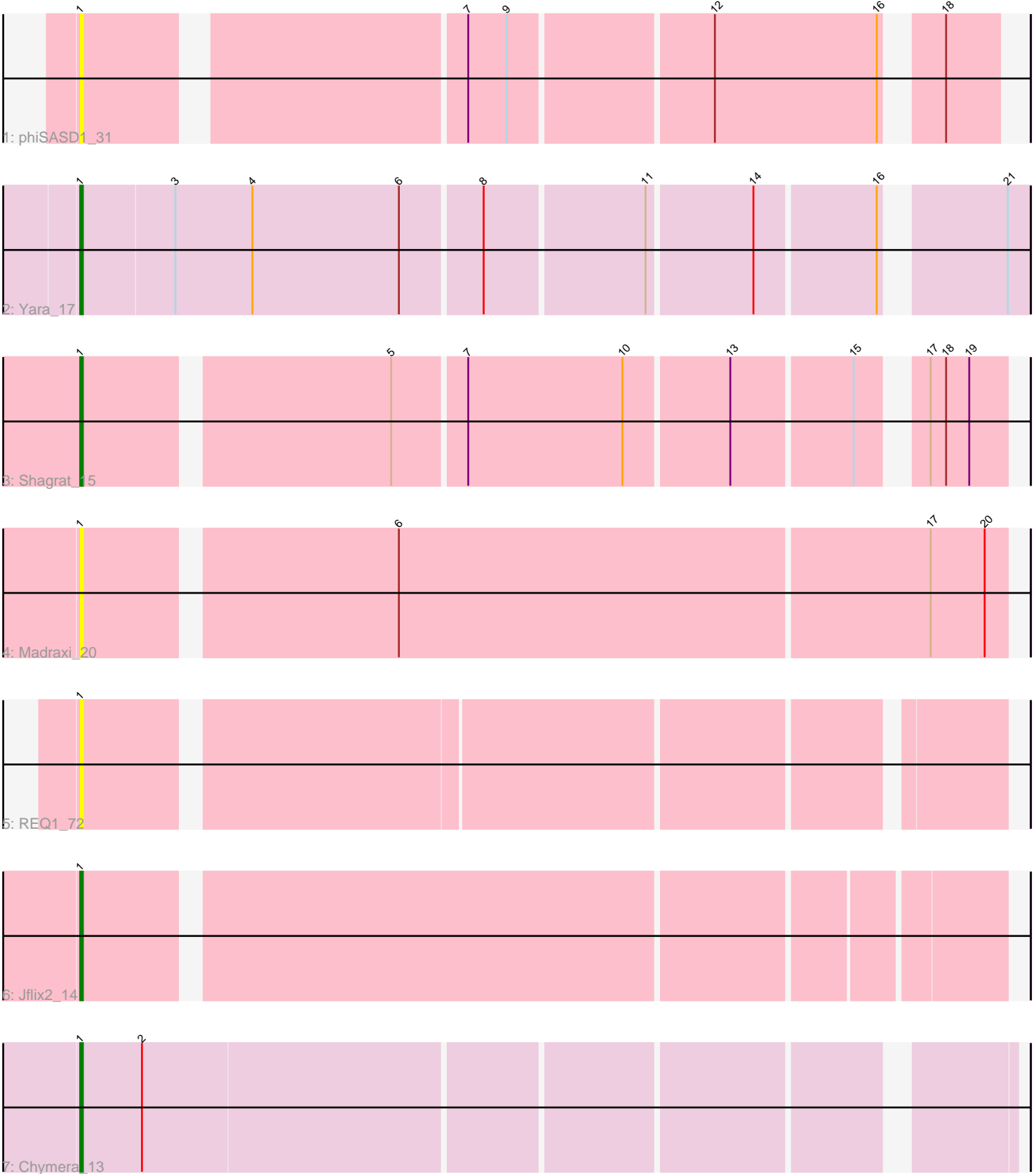


Pham 87958



Note: Tracks are now grouped by subcluster and scaled. Switching in subcluster is indicated by changes in track color. Track scale is now set by default to display the region 30 bp upstream of start 1 to 30 bp downstream of the last possible start. If this default region is judged to be packed too tightly with annotated starts, the track will be further scaled to only show that region of the ORF with annotated starts. This action will be indicated by adding "Zoomed" to the title. For starts, yellow indicates the location of called starts comprised solely of Glimmer/GeneMark auto-annotations, green indicates the location of called starts with at least 1 manual gene annotation.

Pham 87958 Report

This analysis was run 04/28/24 on database version 559.

WARNING: Pham size does not match number of genes in report. Either unphamerated genes have been added (by you) or starterator has removed genes due to invalid start codon.

Pham number 87958 has 7 members, 3 are drafts.

Phages represented in each track:

- Track 1 : phiSASD1_31
- Track 2 : Yara_17
- Track 3 : Shagrat_15
- Track 4 : Madraxi_20
- Track 5 : REQ1_72
- Track 6 : Jflix2_14
- Track 7 : Chymera_13

Summary of Final Annotations (See graph section above for start numbers):

The start number called the most often in the published annotations is 1, it was called in 4 of the 4 non-draft genes in the pham.

Genes that call this "Most Annotated" start:

- Chymera_13, Jflix2_14, Madraxi_20, REQ1_72, Shagrat_15, Yara_17, phiSASD1_31,

Genes that have the "Most Annotated" start but do not call it:

-

Genes that do not have the "Most Annotated" start:

-

Summary by start number:

Start 1:

- Found in 7 of 7 (100.0%) of genes in pham
- Manual Annotations of this start: 4 of 4
- Called 100.0% of time when present

- Phage (with cluster) where this start called: Chymera_13 (singleton), Jflix2_14 (CF), Madraxi_20 (CF), REQ1_72 (CF), Shagrat_15 (CF), Yara_17 (BN), phiSASD1_31 (BJ),

Summary by clusters:

There are 4 clusters represented in this pham: BN, CF, BJ, singleton,

Info for manual annotations of cluster BN:

- Start number 1 was manually annotated 1 time for cluster BN.

Info for manual annotations of cluster CF:

- Start number 1 was manually annotated 2 times for cluster CF.

Gene Information:

Gene: Chymera_13 Start: 9430, Stop: 9768, Start Num: 1

Candidate Starts for Chymera_13:

(Start: 1 @9430 has 4 MA's), (2, 9454),

Gene: Jflix2_14 Start: 12261, Stop: 12599, Start Num: 1

Candidate Starts for Jflix2_14:

(Start: 1 @12261 has 4 MA's),

Gene: Madraxi_20 Start: 14693, Stop: 15040, Start Num: 1

Candidate Starts for Madraxi_20:

(Start: 1 @14693 has 4 MA's), (6, 14807), (17, 15011), (20, 15032),

Gene: REQ1_72 Start: 36167, Stop: 36499, Start Num: 1

Candidate Starts for REQ1_72:

(Start: 1 @36167 has 4 MA's),

Gene: Shagrat_15 Start: 11959, Stop: 12288, Start Num: 1

Candidate Starts for Shagrat_15:

(Start: 1 @11959 has 4 MA's), (5, 12070), (7, 12097), (10, 12157), (13, 12196), (15, 12241), (17, 12259), (18, 12265), (19, 12274),

Gene: Yara_17 Start: 10665, Stop: 11009, Start Num: 1

Candidate Starts for Yara_17:

(Start: 1 @10665 has 4 MA's), (3, 10701), (4, 10731), (6, 10788), (8, 10818), (11, 10878), (14, 10917), (16, 10962), (21, 11001),

Gene: phiSASD1_31 Start: 7450, Stop: 7773, Start Num: 1

Candidate Starts for phiSASD1_31:

(Start: 1 @7450 has 4 MA's), (7, 7585), (9, 7600), (12, 7675), (16, 7738), (18, 7753),