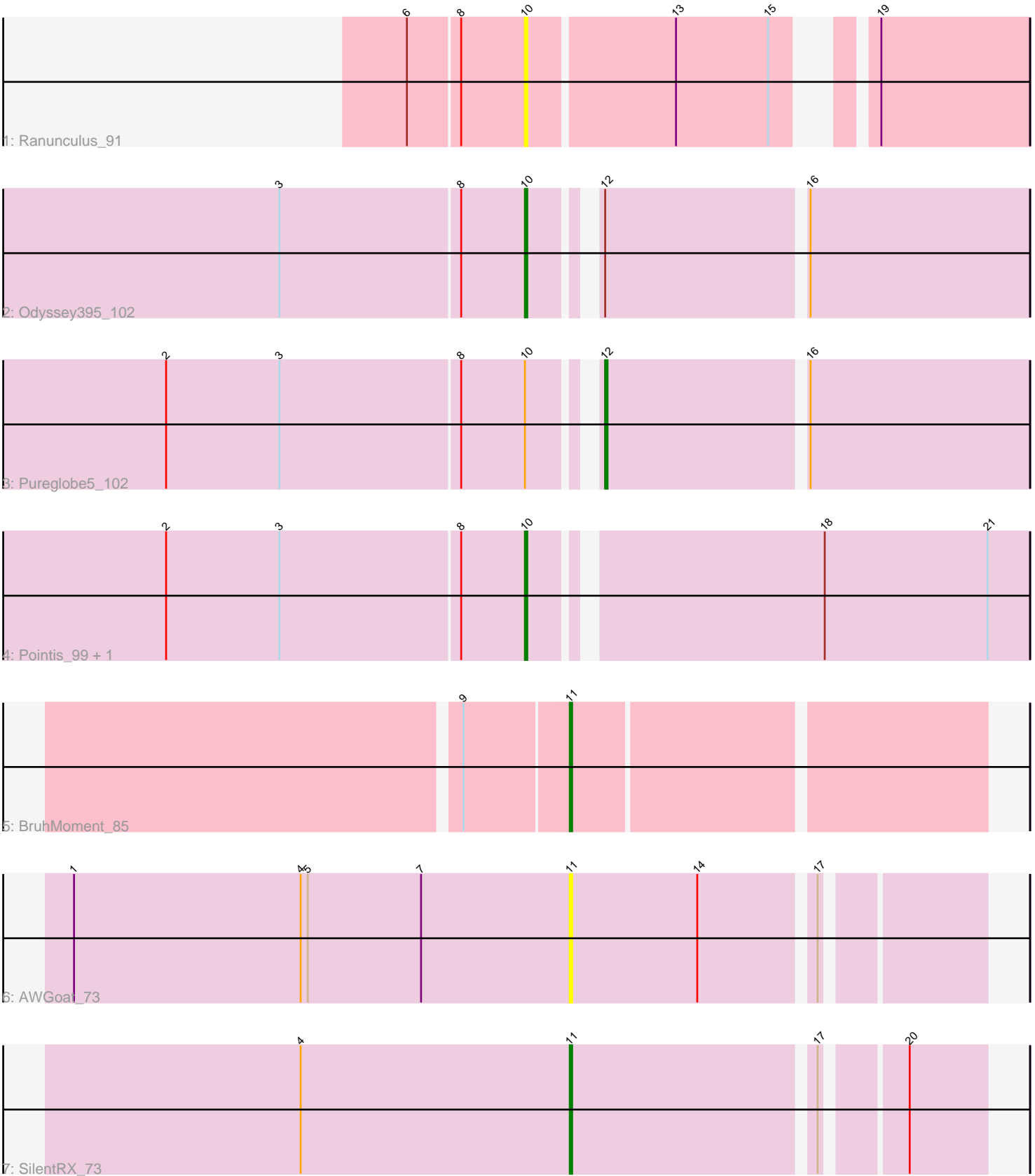


Pham 88217



Note: Tracks are now grouped by subcluster and scaled. Switching in subcluster is indicated by changes in track color. Track scale is now set by default to display the region 30 bp upstream of start 1 to 30 bp downstream of the last possible start. If this default region is judged to be packed too tightly with annotated starts, the track will be further scaled to only show that region of the ORF with annotated starts. This action will be indicated by adding "Zoomed" to the title. For starts, yellow indicates the location of called starts comprised solely of Glimmer/GeneMark auto-annotations, green indicates the location of called starts with at least 1 manual gene annotation.

Pham 88217 Report

This analysis was run 04/28/24 on database version 559.

Pham number 88217 has 8 members, 3 are drafts.

Phages represented in each track:

- Track 1 : Ranunculus_91
- Track 2 : Odyssey395_102
- Track 3 : Pureglobe5_102
- Track 4 : Pointis_99, Beagle_104
- Track 5 : BruhMoment_85
- Track 6 : AWGoat_73
- Track 7 : SilentRX_73

Summary of Final Annotations (See graph section above for start numbers):

The start number called the most often in the published annotations is 10, it was called in 2 of the 5 non-draft genes in the pham.

Genes that call this "Most Annotated" start:

- Beagle_104, Odyssey395_102, Pointis_99, Ranunculus_91,

Genes that have the "Most Annotated" start but do not call it:

- Pureglobe5_102,

Genes that do not have the "Most Annotated" start:

- AWGoat_73, BruhMoment_85, SilentRX_73,

Summary by start number:

Start 10:

- Found in 5 of 8 (62.5%) of genes in pham
- Manual Annotations of this start: 2 of 5
- Called 80.0% of time when present
- Phage (with cluster) where this start called: Beagle_104 (AP2), Odyssey395_102 (AP2), Pointis_99 (AP2), Ranunculus_91 (AP),

Start 11:

- Found in 3 of 8 (37.5%) of genes in pham
- Manual Annotations of this start: 2 of 5

- Called 100.0% of time when present
- Phage (with cluster) where this start called: AWGoat_73 (AP4), BruhMoment_85 (AP3), SilentRX_73 (AP4),

Start 12:

- Found in 2 of 8 (25.0%) of genes in pham
- Manual Annotations of this start: 1 of 5
- Called 50.0% of time when present
- Phage (with cluster) where this start called: Pureglobe5_102 (AP2),

Summary by clusters:

There are 4 clusters represented in this pham: AP2, AP, AP4, AP3,

Info for manual annotations of cluster AP2:

- Start number 10 was manually annotated 2 times for cluster AP2.
- Start number 12 was manually annotated 1 time for cluster AP2.

Info for manual annotations of cluster AP3:

- Start number 11 was manually annotated 1 time for cluster AP3.

Info for manual annotations of cluster AP4:

- Start number 11 was manually annotated 1 time for cluster AP4.

Gene Information:

Gene: AWGoat_73 Start: 50701, Stop: 50540, Start Num: 11

Candidate Starts for AWGoat_73:

(1, 50911), (4, 50815), (5, 50812), (7, 50764), (Start: 11 @50701 has 2 MA's), (14, 50647), (17, 50602),

Gene: Beagle_104 Start: 61388, Stop: 61188, Start Num: 10

Candidate Starts for Beagle_104:

(2, 61538), (3, 61490), (8, 61415), (Start: 10 @61388 has 2 MA's), (18, 61274), (21, 61205),

Gene: BruhMoment_85 Start: 55806, Stop: 55639, Start Num: 11

Candidate Starts for BruhMoment_85:

(9, 55845), (Start: 11 @55806 has 2 MA's),

Gene: Odyssey395_102 Start: 60780, Stop: 60586, Start Num: 10

Candidate Starts for Odyssey395_102:

(3, 60882), (8, 60807), (Start: 10 @60780 has 2 MA's), (Start: 12 @60759 has 1 MA's), (16, 60678),

Gene: Pointis_99 Start: 60679, Stop: 60479, Start Num: 10

Candidate Starts for Pointis_99:

(2, 60829), (3, 60781), (8, 60706), (Start: 10 @60679 has 2 MA's), (18, 60565), (21, 60496),

Gene: Pureglobe5_102 Start: 61317, Stop: 61144, Start Num: 12

Candidate Starts for Pureglobe5_102:

(2, 61488), (3, 61440), (8, 61365), (Start: 10 @61338 has 2 MA's), (Start: 12 @61317 has 1 MA's), (16, 61236),

Gene: Ranunculus_91 Start: 61637, Stop: 61452, Start Num: 10

Candidate Starts for Ranunculus_91:

(6, 61685), (8, 61664), (Start: 10 @61637 has 2 MA's), (13, 61577), (15, 61538), (19, 61514),

Gene: SilentRX_73 Start: 51541, Stop: 51380, Start Num: 11

Candidate Starts for SilentRX_73:

(4, 51655), (Start: 11 @51541 has 2 MA's), (17, 51442), (20, 51412),