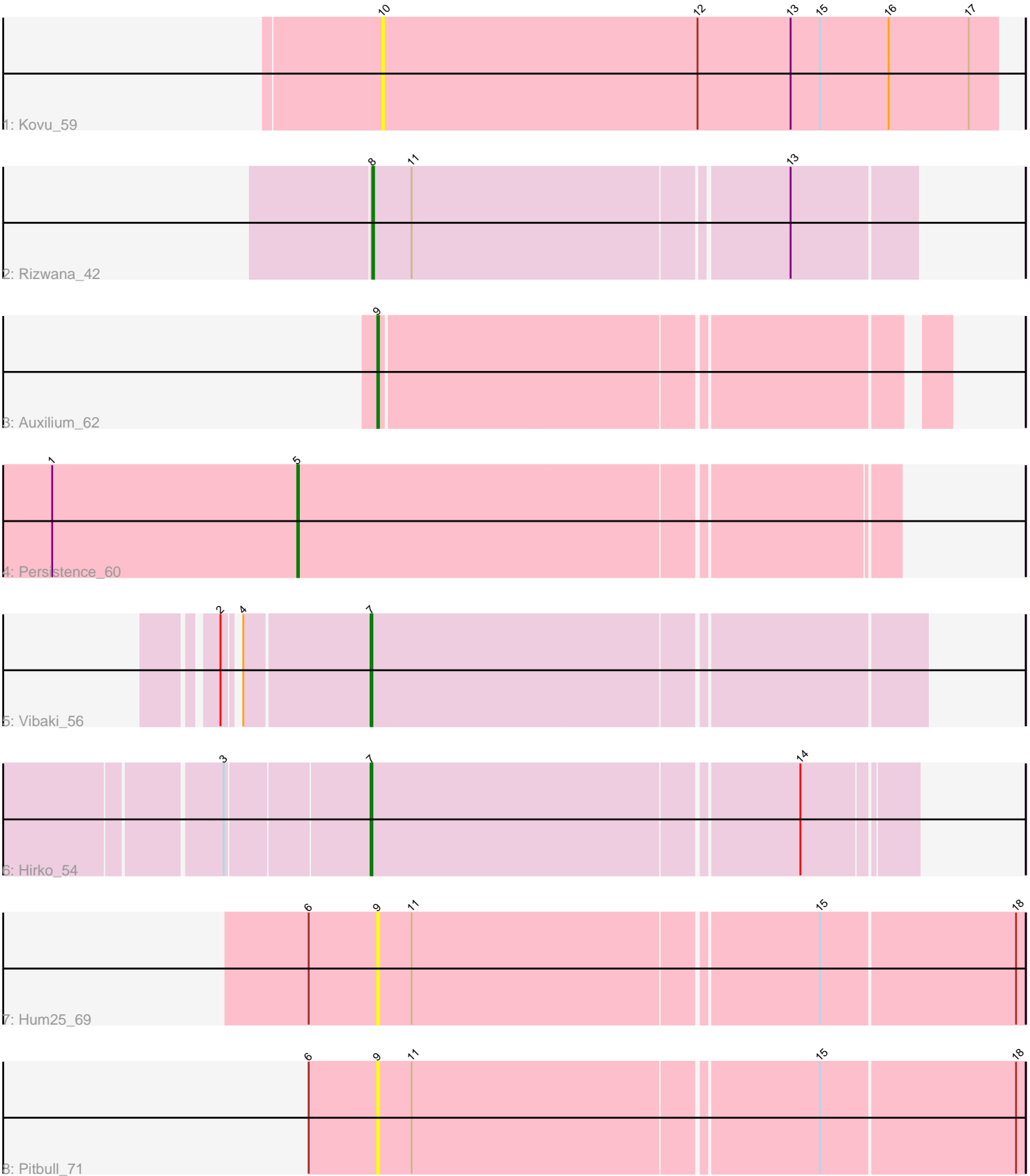


Pham 88254



Note: Tracks are now grouped by subcluster and scaled. Switching in subcluster is indicated by changes in track color. Track scale is now set by default to display the region 30 bp upstream of start 1 to 30 bp downstream of the last possible start. If this default region is judged to be packed too tightly with annotated starts, the track will be further scaled to only show that region of the ORF with annotated starts. This action will be indicated by adding "Zoomed" to the title. For starts, yellow indicates the location of called starts comprised solely of Glimmer/GeneMark auto-annotations, green indicates the location of called starts with at least 1 manual gene annotation.

Pham 88254 Report

This analysis was run 04/05/24 on database version 557.

Pham number 88254 has 8 members, 3 are drafts.

Phages represented in each track:

- Track 1 : Kovu_59
- Track 2 : Rizwana_42
- Track 3 : Auxilium_62
- Track 4 : Persistence_60
- Track 5 : Vibaki_56
- Track 6 : Hirko_54
- Track 7 : Hum25_69
- Track 8 : Pitbull_71

Summary of Final Annotations (See graph section above for start numbers):

The start number called the most often in the published annotations is 7, it was called in 2 of the 5 non-draft genes in the pham.

Genes that call this "Most Annotated" start:

- Hirko_54, Vibaki_56,

Genes that have the "Most Annotated" start but do not call it:

-

Genes that do not have the "Most Annotated" start:

- Auxilium_62, Hum25_69, Kovu_59, Persistence_60, Pitbull_71, Rizwana_42,

Summary by start number:

Start 5:

- Found in 1 of 8 (12.5%) of genes in pham
- Manual Annotations of this start: 1 of 5
- Called 100.0% of time when present
- Phage (with cluster) where this start called: Persistence_60 (AY),

Start 7:

- Found in 2 of 8 (25.0%) of genes in pham
- Manual Annotations of this start: 2 of 5

- Called 100.0% of time when present
- Phage (with cluster) where this start called: Hirko_54 (FL), Vibaki_56 (FL),

Start 8:

- Found in 1 of 8 (12.5%) of genes in pham
- Manual Annotations of this start: 1 of 5
- Called 100.0% of time when present
- Phage (with cluster) where this start called: Rizwana_42 (AP1),

Start 9:

- Found in 3 of 8 (37.5%) of genes in pham
- Manual Annotations of this start: 1 of 5
- Called 100.0% of time when present
- Phage (with cluster) where this start called: Auxilium_62 (AY), Hum25_69 (FQ), Pitbull_71 (FQ),

Start 10:

- Found in 1 of 8 (12.5%) of genes in pham
- No Manual Annotations of this start.
- Called 100.0% of time when present
- Phage (with cluster) where this start called: Kovu_59 (AL),

Summary by clusters:

There are 5 clusters represented in this pham: AY, FQ, AP1, FL, AL,

Info for manual annotations of cluster AP1:

- Start number 8 was manually annotated 1 time for cluster AP1.

Info for manual annotations of cluster AY:

- Start number 5 was manually annotated 1 time for cluster AY.
- Start number 9 was manually annotated 1 time for cluster AY.

Info for manual annotations of cluster FL:

- Start number 7 was manually annotated 2 times for cluster FL.

Gene Information:

Gene: Auxilium_62 Start: 32641, Stop: 32964, Start Num: 9

Candidate Starts for Auxilium_62:

(Start: 9 @32641 has 1 MA's),

Gene: Hirko_54 Start: 39851, Stop: 40168, Start Num: 7

Candidate Starts for Hirko_54:

(3, 39767), (Start: 7 @39851 has 2 MA's), (14, 40103),

Gene: Hum25_69 Start: 38750, Stop: 39133, Start Num: 9

Candidate Starts for Hum25_69:

(6, 38708), (Start: 9 @38750 has 1 MA's), (11, 38771), (15, 39011), (18, 39128),

Gene: Kovu_59 Start: 33436, Stop: 33810, Start Num: 10

Candidate Starts for Kovu_59:

(10, 33436), (12, 33628), (13, 33685), (15, 33703), (16, 33745), (17, 33793),

Gene: Persistence_60 Start: 33882, Stop: 34235, Start Num: 5

Candidate Starts for Persistence_60:

(1, 33732), (Start: 5 @33882 has 1 MA's),

Gene: Pitbull_71 Start: 38132, Stop: 38515, Start Num: 9

Candidate Starts for Pitbull_71:

(6, 38090), (Start: 9 @38132 has 1 MA's), (11, 38153), (15, 38393), (18, 38510),

Gene: Rizwana_42 Start: 37831, Stop: 37511, Start Num: 8

Candidate Starts for Rizwana_42:

(Start: 8 @37831 has 1 MA's), (11, 37807), (13, 37585),

Gene: Vibaki_56 Start: 39869, Stop: 40195, Start Num: 7

Candidate Starts for Vibaki_56:

(2, 39788), (4, 39794), (Start: 7 @39869 has 2 MA's),