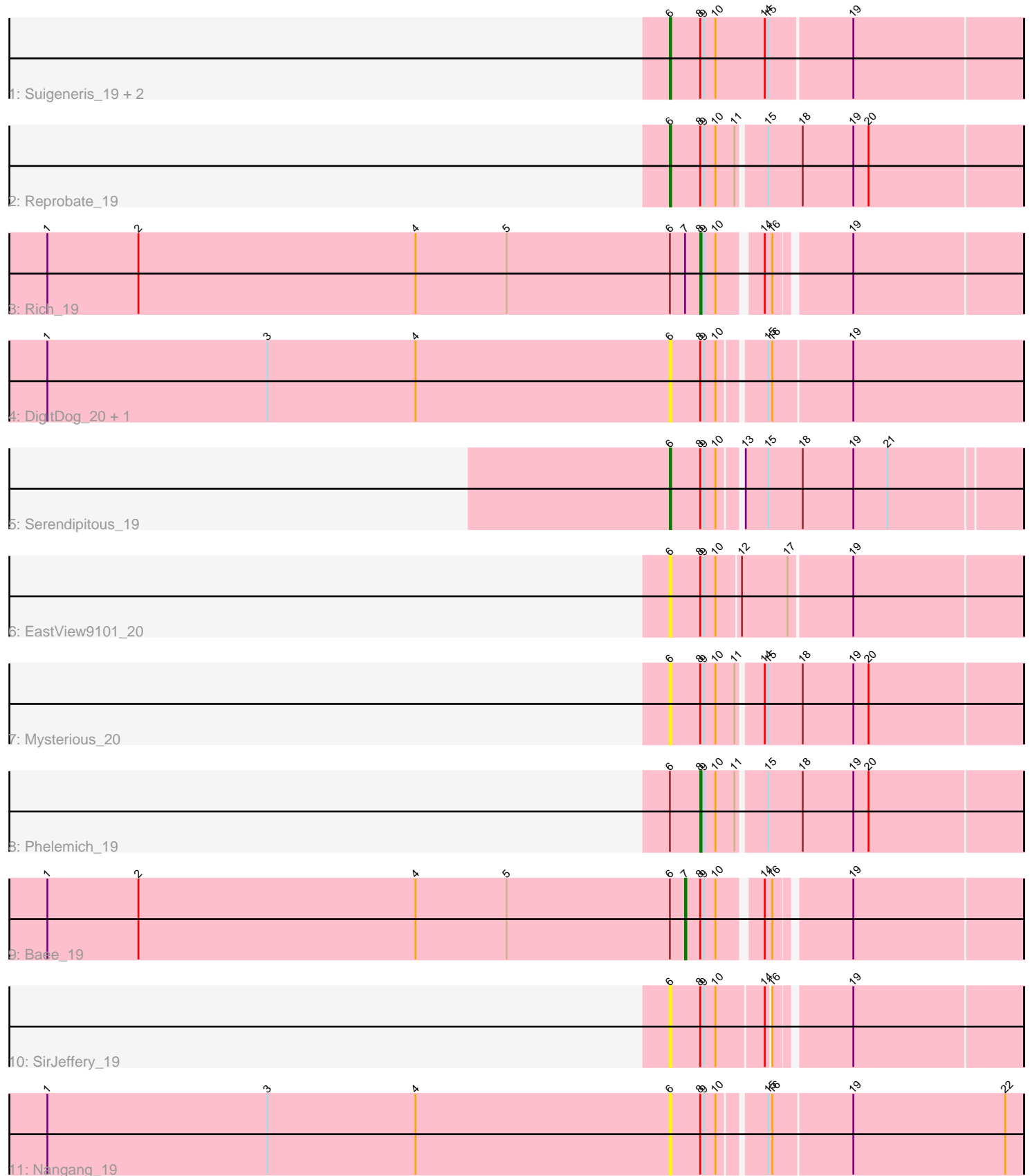


Pham 96870



Note: Tracks are now grouped by subcluster and scaled. Switching in subcluster is indicated by changes in track color. Track scale is now set by default to display the region 30 bp upstream of start 1 to 30 bp downstream of the last possible start. If this default region is judged to be packed too tightly with annotated starts, the track will be further scaled to only show that region of the ORF with annotated starts. This action will be indicated by adding "Zoomed" to the title. For starts, yellow indicates the location of called starts comprised solely of Glimmer/GeneMark auto-annotations, green indicates the location of called starts with at least 1 manual gene annotation.

Pham 96870 Report

This analysis was run 04/28/24 on database version 559.

Pham number 96870 has 14 members, 6 are drafts.

Phages represented in each track:

- Track 1 : Suigeneris_19, Donny_19, Acadian_19
- Track 2 : Reprobate_19
- Track 3 : Rich_19
- Track 4 : DigitDog_20, StinkyVeggy_21
- Track 5 : Serendipitous_19
- Track 6 : EastView9101_20
- Track 7 : Mysterious_20
- Track 8 : Phelemich_19
- Track 9 : Baee_19
- Track 10 : SirJeffery_19
- Track 11 : Nangang_19

Summary of Final Annotations (See graph section above for start numbers):

The start number called the most often in the published annotations is 6, it was called in 5 of the 8 non-draft genes in the pham.

Genes that call this "Most Annotated" start:

- Acadian_19, DigitDog_20, Donny_19, EastView9101_20, Mysterious_20, Nangang_19, Reprobate_19, Serendipitous_19, SirJeffery_19, StinkyVeggy_21, Suigeneris_19,

Genes that have the "Most Annotated" start but do not call it:

- Baee_19, Phelemich_19, Rich_19,

Genes that do not have the "Most Annotated" start:

•

Summary by start number:

Start 6:

- Found in 14 of 14 (100.0%) of genes in pham
- Manual Annotations of this start: 5 of 8
- Called 78.6% of time when present

- Phage (with cluster) where this start called: Acadian_19 (B5), DigitDog_20 (B5), Donny_19 (B5), EastView9101_20 (B5), Mysterious_20 (B5), Nangang_19 (B5), Reprobate_19 (B5), Serendipitous_19 (B5), SirJeffery_19 (B5), StinkyVeggy_21 (B5), Suigeneris_19 (B5),

Start 7:

- Found in 2 of 14 (14.3%) of genes in pham
- Manual Annotations of this start: 1 of 8
- Called 50.0% of time when present
- Phage (with cluster) where this start called: Baee_19 (B5),

Start 8:

- Found in 14 of 14 (100.0%) of genes in pham
- Manual Annotations of this start: 2 of 8
- Called 14.3% of time when present
- Phage (with cluster) where this start called: Phelemich_19 (B5), Rich_19 (B5),

Summary by clusters:

There is one cluster represented in this pham: B5

Info for manual annotations of cluster B5:

- Start number 6 was manually annotated 5 times for cluster B5.
- Start number 7 was manually annotated 1 time for cluster B5.
- Start number 8 was manually annotated 2 times for cluster B5.

Gene Information:

Gene: Acadian_19 Start: 16182, Stop: 16451, Start Num: 6

Candidate Starts for Acadian_19:

(Start: 6 @16182 has 5 MA's), (Start: 8 @16206 has 2 MA's), (9, 16209), (10, 16218), (14, 16254), (15, 16257), (19, 16320),

Gene: Baee_19 Start: 16340, Stop: 16585, Start Num: 7

Candidate Starts for Baee_19:

(1, 15836), (2, 15908), (4, 16127), (5, 16199), (Start: 6 @16328 has 5 MA's), (Start: 7 @16340 has 1 MA's), (Start: 8 @16352 has 2 MA's), (9, 16355), (10, 16364), (14, 16394), (16, 16400), (19, 16454),

Gene: DigitDog_20 Start: 16149, Stop: 16415, Start Num: 6

Candidate Starts for DigitDog_20:

(1, 15657), (3, 15831), (4, 15948), (Start: 6 @16149 has 5 MA's), (Start: 8 @16173 has 2 MA's), (9, 16176), (10, 16185), (15, 16218), (16, 16221), (19, 16281),

Gene: Donny_19 Start: 16184, Stop: 16456, Start Num: 6

Candidate Starts for Donny_19:

(Start: 6 @16184 has 5 MA's), (Start: 8 @16208 has 2 MA's), (9, 16211), (10, 16220), (14, 16259), (15, 16262), (19, 16325),

Gene: EastView9101_20 Start: 16193, Stop: 16462, Start Num: 6

Candidate Starts for EastView9101_20:

(Start: 6 @16193 has 5 MA's), (Start: 8 @16217 has 2 MA's), (9, 16220), (10, 16229), (12, 16247), (17, 16283), (19, 16331),

Gene: Mysterious_20 Start: 16425, Stop: 16694, Start Num: 6

Candidate Starts for Mysterious_20:

(Start: 6 @16425 has 5 MA's), (Start: 8 @16449 has 2 MA's), (9, 16452), (10, 16461), (11, 16476), (14, 16494), (15, 16497), (18, 16524), (19, 16563), (20, 16575),

Gene: Nangang_19 Start: 16149, Stop: 16415, Start Num: 6

Candidate Starts for Nangang_19:

(1, 15657), (3, 15831), (4, 15948), (Start: 6 @16149 has 5 MA's), (Start: 8 @16173 has 2 MA's), (9, 16176), (10, 16185), (15, 16218), (16, 16221), (19, 16281), (22, 16401),

Gene: Phelemich_19 Start: 16453, Stop: 16698, Start Num: 8

Candidate Starts for Phelemich_19:

(Start: 6 @16429 has 5 MA's), (Start: 8 @16453 has 2 MA's), (9, 16456), (10, 16465), (11, 16480), (15, 16501), (18, 16528), (19, 16567), (20, 16579),

Gene: Reprobate_19 Start: 16426, Stop: 16695, Start Num: 6

Candidate Starts for Reprobate_19:

(Start: 6 @16426 has 5 MA's), (Start: 8 @16450 has 2 MA's), (9, 16453), (10, 16462), (11, 16477), (15, 16498), (18, 16525), (19, 16564), (20, 16576),

Gene: Rich_19 Start: 16349, Stop: 16582, Start Num: 8

Candidate Starts for Rich_19:

(1, 15833), (2, 15905), (4, 16124), (5, 16196), (Start: 6 @16325 has 5 MA's), (Start: 7 @16337 has 1 MA's), (Start: 8 @16349 has 2 MA's), (9, 16352), (10, 16361), (14, 16391), (16, 16397), (19, 16451),

Gene: Serendipitous_19 Start: 16372, Stop: 16635, Start Num: 6

Candidate Starts for Serendipitous_19:

(Start: 6 @16372 has 5 MA's), (Start: 8 @16396 has 2 MA's), (9, 16399), (10, 16408), (13, 16423), (15, 16441), (18, 16468), (19, 16507), (21, 16534),

Gene: SirJeffery_19 Start: 16184, Stop: 16444, Start Num: 6

Candidate Starts for SirJeffery_19:

(Start: 6 @16184 has 5 MA's), (Start: 8 @16208 has 2 MA's), (9, 16211), (10, 16220), (14, 16256), (16, 16259), (19, 16313),

Gene: StinkyVeggy_21 Start: 16305, Stop: 16571, Start Num: 6

Candidate Starts for StinkyVeggy_21:

(1, 15813), (3, 15987), (4, 16104), (Start: 6 @16305 has 5 MA's), (Start: 8 @16329 has 2 MA's), (9, 16332), (10, 16341), (15, 16374), (16, 16377), (19, 16437),

Gene: Suigeneris_19 Start: 16184, Stop: 16456, Start Num: 6

Candidate Starts for Suigeneris_19:

(Start: 6 @16184 has 5 MA's), (Start: 8 @16208 has 2 MA's), (9, 16211), (10, 16220), (14, 16259), (15, 16262), (19, 16325),