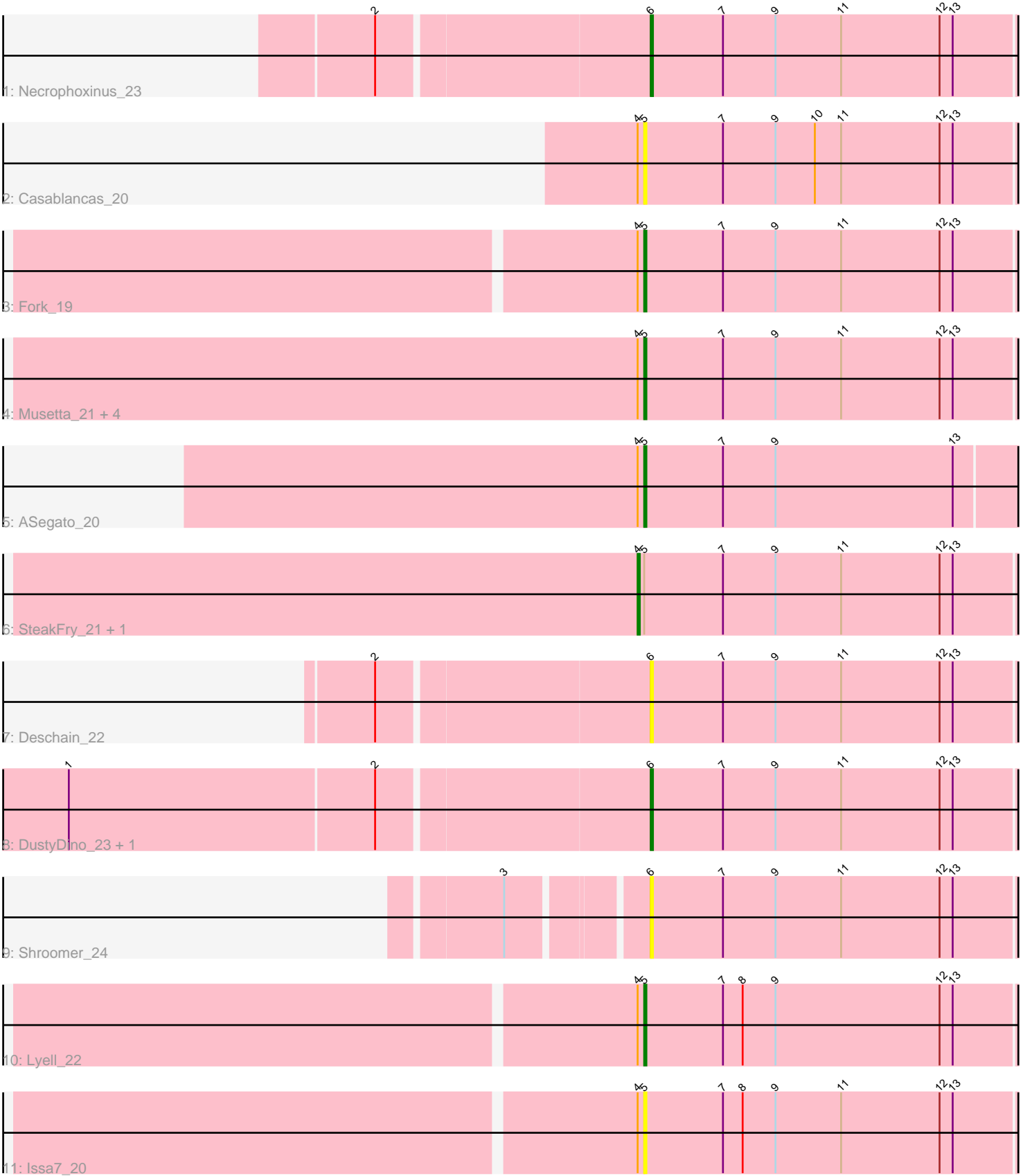


Pham 241230



Note: Tracks are now grouped by subcluster and scaled. Switching in subcluster is indicated by changes in track color. Track scale is now set by default to display the region 30 bp upstream of start 1 to 30 bp downstream of the last possible start. If this default region is judged to be packed too tightly with annotated starts, the track will be further scaled to only show that region of the ORF with annotated starts. This action will be indicated by adding "Zoomed" to the title. For starts, yellow indicates the location of called starts comprised solely of Glimmer/GeneMark auto-annotations, green indicates the location of called starts with at least 1 manual gene annotation.

## Pham 241230 Report

This analysis was run 02/07/26 on database version 634.

Pham number 241230 has 17 members, 5 are drafts.

Phages represented in each track:

- Track 1 : Necrophoxinus\_23
- Track 2 : Casablanacas\_20
- Track 3 : Fork\_19
- Track 4 : Musetta\_21, StevieWelch\_22, Yuma\_21, Erenyeager\_20, HollowPurple\_22
- Track 5 : ASegato\_20
- Track 6 : SteakFry\_21, Welcome\_21
- Track 7 : Deschain\_22
- Track 8 : DustyDino\_23, RunningBrook\_22
- Track 9 : Shroomer\_24
- Track 10 : Lyell\_22
- Track 11 : Issa7\_20

### ***Summary of Final Annotations (See graph section above for start numbers):***

The start number called the most often in the published annotations is 5, it was called in 8 of the 12 non-draft genes in the pham.

Genes that call this "Most Annotated" start:

- ASegato\_20, Casablanacas\_20, Erenyeager\_20, Fork\_19, HollowPurple\_22, Issa7\_20, Lyell\_22, Musetta\_21, StevieWelch\_22, Yuma\_21,

Genes that have the "Most Annotated" start but do not call it:

- SteakFry\_21, Welcome\_21,

Genes that do not have the "Most Annotated" start:

- Deschain\_22, DustyDino\_23, Necrophoxinus\_23, RunningBrook\_22, Shroomer\_24,

### **Summary by start number:**

Start 4:

- Found in 12 of 17 ( 70.6% ) of genes in pham
- Manual Annotations of this start: 1 of 12
- Called 16.7% of time when present

- Phage (with cluster) where this start called: SteakFry\_21 (ED2), Welcome\_21 (ED2),

Start 5:

- Found in 12 of 17 ( 70.6% ) of genes in pham
- Manual Annotations of this start: 8 of 12
- Called 83.3% of time when present
- Phage (with cluster) where this start called: ASegato\_20 (ED2), Casablanacas\_20 (ED2), Erenyeager\_20 (ED2), Fork\_19 (ED2), HollowPurple\_22 (ED2), Issa7\_20 (ED2), Lyell\_22 (ED2), Musetta\_21 (ED2), StevieWelch\_22 (ED2), Yuma\_21 (ED2),

Start 6:

- Found in 5 of 17 ( 29.4% ) of genes in pham
- Manual Annotations of this start: 3 of 12
- Called 100.0% of time when present
- Phage (with cluster) where this start called: Deschain\_22 (ED2), DustyDino\_23 (ED2), Necrophoxinus\_23 (ED2), RunningBrook\_22 (ED2), Shroomer\_24 (ED2),

### **Summary by clusters:**

There is one cluster represented in this pham: ED2

Info for manual annotations of cluster ED2:

- Start number 4 was manually annotated 1 time for cluster ED2.
- Start number 5 was manually annotated 8 times for cluster ED2.
- Start number 6 was manually annotated 3 times for cluster ED2.

### **Gene Information:**

Gene: ASegato\_20 Start: 6699, Stop: 6878, Start Num: 5

Candidate Starts for ASegato\_20:

(Start: 4 @6696 has 1 MA's), (Start: 5 @6699 has 8 MA's), (7, 6735), (9, 6759), (13, 6840),

Gene: Casablanacas\_20 Start: 6639, Stop: 6815, Start Num: 5

Candidate Starts for Casablanacas\_20:

(Start: 4 @6636 has 1 MA's), (Start: 5 @6639 has 8 MA's), (7, 6675), (9, 6699), (10, 6717), (11, 6729), (12, 6774), (13, 6780),

Gene: Deschain\_22 Start: 7246, Stop: 7419, Start Num: 6

Candidate Starts for Deschain\_22:

(2, 7126), (Start: 6 @7246 has 3 MA's), (7, 7279), (9, 7303), (11, 7333), (12, 7378), (13, 7384),

Gene: DustyDino\_23 Start: 7345, Stop: 7518, Start Num: 6

Candidate Starts for DustyDino\_23:

(1, 7087), (2, 7225), (Start: 6 @7345 has 3 MA's), (7, 7378), (9, 7402), (11, 7432), (12, 7477), (13, 7483),

Gene: Erenyeager\_20 Start: 6617, Stop: 6793, Start Num: 5

Candidate Starts for Erenyeager\_20:

(Start: 4 @6614 has 1 MA's), (Start: 5 @6617 has 8 MA's), (7, 6653), (9, 6677), (11, 6707), (12, 6752), (13, 6758),

Gene: Fork\_19 Start: 6353, Stop: 6529, Start Num: 5

Candidate Starts for Fork\_19:

(Start: 4 @6350 has 1 MA's), (Start: 5 @6353 has 8 MA's), (7, 6389), (9, 6413), (11, 6443), (12, 6488), (13, 6494),

Gene: HollowPurple\_22 Start: 6863, Stop: 7039, Start Num: 5

Candidate Starts for HollowPurple\_22:

(Start: 4 @6860 has 1 MA's), (Start: 5 @6863 has 8 MA's), (7, 6899), (9, 6923), (11, 6953), (12, 6998), (13, 7004),

Gene: Issa7\_20 Start: 6274, Stop: 6450, Start Num: 5

Candidate Starts for Issa7\_20:

(Start: 4 @6271 has 1 MA's), (Start: 5 @6274 has 8 MA's), (7, 6310), (8, 6319), (9, 6334), (11, 6364), (12, 6409), (13, 6415),

Gene: Lyell\_22 Start: 6815, Stop: 6991, Start Num: 5

Candidate Starts for Lyell\_22:

(Start: 4 @6812 has 1 MA's), (Start: 5 @6815 has 8 MA's), (7, 6851), (8, 6860), (9, 6875), (12, 6950), (13, 6956),

Gene: Musetta\_21 Start: 6833, Stop: 7009, Start Num: 5

Candidate Starts for Musetta\_21:

(Start: 4 @6830 has 1 MA's), (Start: 5 @6833 has 8 MA's), (7, 6869), (9, 6893), (11, 6923), (12, 6968), (13, 6974),

Gene: Necrophoxinus\_23 Start: 7427, Stop: 7600, Start Num: 6

Candidate Starts for Necrophoxinus\_23:

(2, 7307), (Start: 6 @7427 has 3 MA's), (7, 7460), (9, 7484), (11, 7514), (12, 7559), (13, 7565),

Gene: RunningBrook\_22 Start: 7345, Stop: 7518, Start Num: 6

Candidate Starts for RunningBrook\_22:

(1, 7087), (2, 7225), (Start: 6 @7345 has 3 MA's), (7, 7378), (9, 7402), (11, 7432), (12, 7477), (13, 7483),

Gene: Shroomer\_24 Start: 6845, Stop: 7018, Start Num: 6

Candidate Starts for Shroomer\_24:

(3, 6788), (Start: 6 @6845 has 3 MA's), (7, 6878), (9, 6902), (11, 6932), (12, 6977), (13, 6983),

Gene: SteakFry\_21 Start: 6860, Stop: 7039, Start Num: 4

Candidate Starts for SteakFry\_21:

(Start: 4 @6860 has 1 MA's), (Start: 5 @6863 has 8 MA's), (7, 6899), (9, 6923), (11, 6953), (12, 6998), (13, 7004),

Gene: StevieWelch\_22 Start: 6983, Stop: 7159, Start Num: 5

Candidate Starts for StevieWelch\_22:

(Start: 4 @6980 has 1 MA's), (Start: 5 @6983 has 8 MA's), (7, 7019), (9, 7043), (11, 7073), (12, 7118), (13, 7124),

Gene: Welcome\_21 Start: 6826, Stop: 7005, Start Num: 4

Candidate Starts for Welcome\_21:

(Start: 4 @6826 has 1 MA's), (Start: 5 @6829 has 8 MA's), (7, 6865), (9, 6889), (11, 6919), (12, 6964), (13, 6970),

Gene: Yuma\_21 Start: 6732, Stop: 6908, Start Num: 5

Candidate Starts for Yuma\_21:

(Start: 4 @6729 has 1 MA's), (Start: 5 @6732 has 8 MA's), (7, 6768), (9, 6792), (11, 6822), (12, 6867),  
(13, 6873),