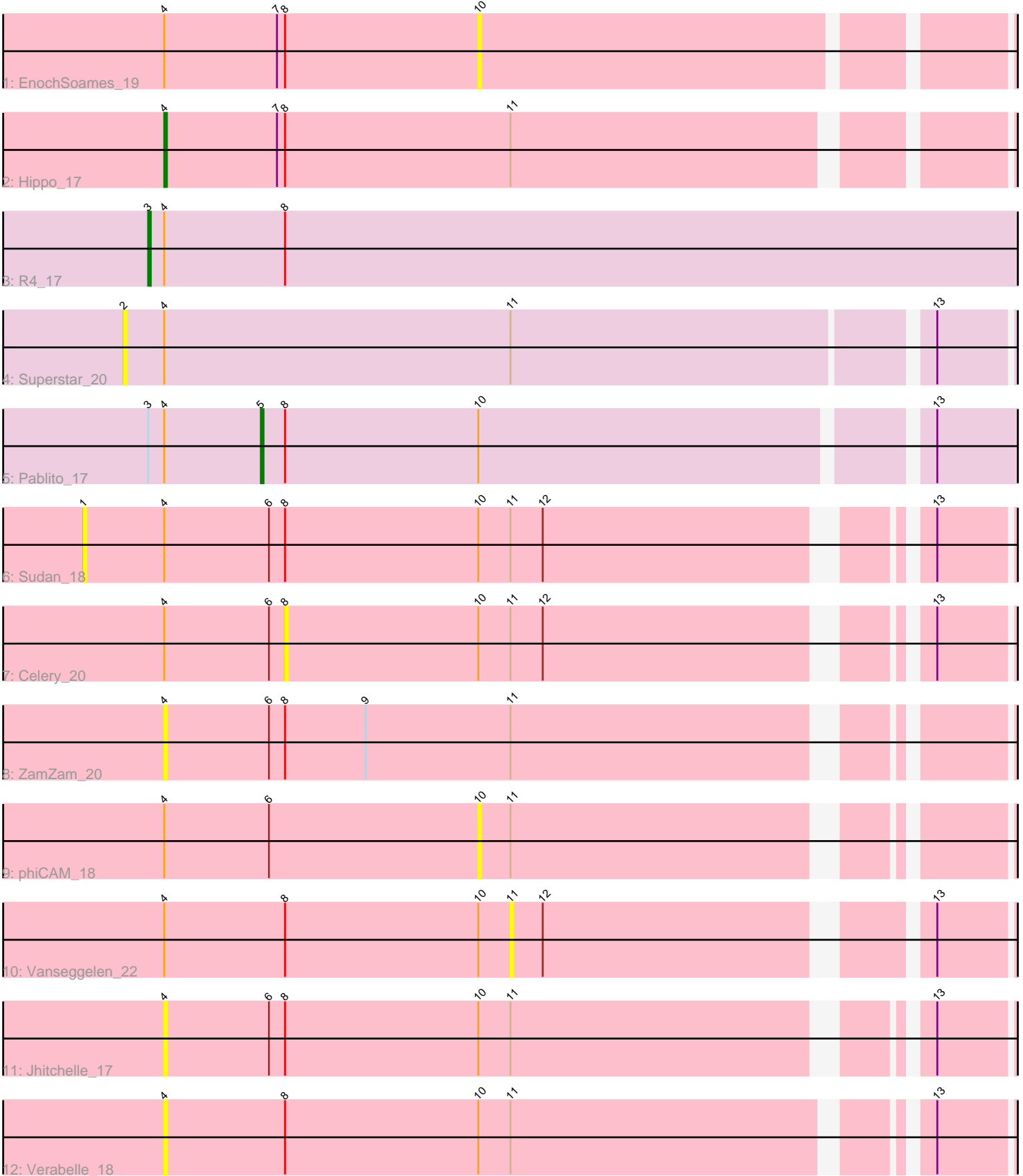


Pham 252837



Note: Tracks are now grouped by subcluster and scaled. Switching in subcluster is indicated by changes in track color. Track scale is now set by default to display the region 30 bp upstream of start 1 to 30 bp downstream of the last possible start. If this default region is judged to be packed too tightly with annotated starts, the track will be further scaled to only show that region of the ORF with annotated starts. This action will be indicated by adding "Zoomed" to the title. For starts, yellow indicates the location of called starts comprised solely of Glimmer/GeneMark auto-annotations, green indicates the location of called starts with at least 1 manual gene annotation.

Pham 252837 Report

This analysis was run 02/07/26 on database version 634.

WARNING: Pham size does not match number of genes in report. Either unphamerated genes have been added (by you) or starterator has removed genes due to invalid start codon.

Pham number 252837 has 12 members, 9 are drafts.

Phages represented in each track:

- Track 1 : EnochSoames_19
- Track 2 : Hippo_17
- Track 3 : R4_17
- Track 4 : Superstar_20
- Track 5 : Pablito_17
- Track 6 : Sudan_18
- Track 7 : Celery_20
- Track 8 : ZamZam_20
- Track 9 : phiCAM_18
- Track 10 : Vanseggelen_22
- Track 11 : Jhitchelle_17
- Track 12 : Verabelle_18

Summary of Final Annotations (See graph section above for start numbers):

The start number called the most often in the published annotations is 3, it was called in 1 of the 3 non-draft genes in the pham.

Genes that call this "Most Annotated" start:

- R4_17,

Genes that have the "Most Annotated" start but do not call it:

- Pablito_17,

Genes that do not have the "Most Annotated" start:

- Celery_20, EnochSoames_19, Hippo_17, Jhitchelle_17, Sudan_18, Superstar_20, Vanseggelen_22, Verabelle_18, ZamZam_20, phiCAM_18,

Summary by start number:

Start 1:

- Found in 1 of 12 (8.3%) of genes in pham
- No Manual Annotations of this start.
- Called 100.0% of time when present
- Phage (with cluster) where this start called: Sudan_18 (BD3),

Start 2:

- Found in 1 of 12 (8.3%) of genes in pham
- No Manual Annotations of this start.
- Called 100.0% of time when present
- Phage (with cluster) where this start called: Superstar_20 (BD2),

Start 3:

- Found in 2 of 12 (16.7%) of genes in pham
- Manual Annotations of this start: 1 of 3
- Called 50.0% of time when present
- Phage (with cluster) where this start called: R4_17 (BD2),

Start 4:

- Found in 12 of 12 (100.0%) of genes in pham
- Manual Annotations of this start: 1 of 3
- Called 33.3% of time when present
- Phage (with cluster) where this start called: Hippo_17 (BD1), Jhitchelle_17 (BD3), Verabelle_18 (BD3), ZamZam_20 (BD3),

Start 5:

- Found in 1 of 12 (8.3%) of genes in pham
- Manual Annotations of this start: 1 of 3
- Called 100.0% of time when present
- Phage (with cluster) where this start called: Pablito_17 (BD2),

Start 8:

- Found in 10 of 12 (83.3%) of genes in pham
- No Manual Annotations of this start.
- Called 10.0% of time when present
- Phage (with cluster) where this start called: Celery_20 (BD3),

Start 10:

- Found in 8 of 12 (66.7%) of genes in pham
- No Manual Annotations of this start.
- Called 25.0% of time when present
- Phage (with cluster) where this start called: EnochSoames_19 (BD1), phiCAM_18 (BD3),

Start 11:

- Found in 9 of 12 (75.0%) of genes in pham
- No Manual Annotations of this start.
- Called 11.1% of time when present
- Phage (with cluster) where this start called: Vanseggelen_22 (BD3),

Summary by clusters:

There are 3 clusters represented in this pham: BD1, BD3, BD2,

Info for manual annotations of cluster BD1:

- Start number 4 was manually annotated 1 time for cluster BD1.

Info for manual annotations of cluster BD2:

- Start number 3 was manually annotated 1 time for cluster BD2.
- Start number 5 was manually annotated 1 time for cluster BD2.

Gene Information:

Gene: Celery_20 Start: 11250, Stop: 11507, Start Num: 8

Candidate Starts for Celery_20:

(Start: 4 @11205 has 1 MA's), (6, 11244), (8, 11250), (10, 11322), (11, 11334), (12, 11346), (13, 11472),

Gene: EnochSoames_19 Start: 11630, Stop: 11824, Start Num: 10

Candidate Starts for EnochSoames_19:

(Start: 4 @11513 has 1 MA's), (7, 11555), (8, 11558), (10, 11630),

Gene: Hippo_17 Start: 11334, Stop: 11642, Start Num: 4

Candidate Starts for Hippo_17:

(Start: 4 @11334 has 1 MA's), (7, 11376), (8, 11379), (11, 11463),

Gene: Jhitchelle_17 Start: 10887, Stop: 11189, Start Num: 4

Candidate Starts for Jhitchelle_17:

(Start: 4 @10887 has 1 MA's), (6, 10926), (8, 10932), (10, 11004), (11, 11016), (13, 11154),

Gene: Pablito_17 Start: 11212, Stop: 11490, Start Num: 5

Candidate Starts for Pablito_17:

(Start: 3 @11170 has 1 MA's), (Start: 4 @11176 has 1 MA's), (Start: 5 @11212 has 1 MA's), (8, 11221), (10, 11293), (13, 11452),

Gene: R4_17 Start: 11302, Stop: 11634, Start Num: 3

Candidate Starts for R4_17:

(Start: 3 @11302 has 1 MA's), (Start: 4 @11308 has 1 MA's), (8, 11353),

Gene: Sudan_18 Start: 11216, Stop: 11548, Start Num: 1

Candidate Starts for Sudan_18:

(1, 11216), (Start: 4 @11246 has 1 MA's), (6, 11285), (8, 11291), (10, 11363), (11, 11375), (12, 11387), (13, 11513),

Gene: Superstar_20 Start: 12332, Stop: 12667, Start Num: 2

Candidate Starts for Superstar_20:

(2, 12332), (Start: 4 @12347 has 1 MA's), (11, 12476), (13, 12626),

Gene: Vanseggelen_22 Start: 11038, Stop: 11214, Start Num: 11

Candidate Starts for Vanseggelen_22:

(Start: 4 @10909 has 1 MA's), (8, 10954), (10, 11026), (11, 11038), (12, 11050), (13, 11179),

Gene: Verabelle_18 Start: 11240, Stop: 11545, Start Num: 4

Candidate Starts for Verabelle_18:

(Start: 4 @11240 has 1 MA's), (8, 11285), (10, 11357), (11, 11369), (13, 11510),

Gene: ZamZam_20 Start: 11252, Stop: 11554, Start Num: 4

Candidate Starts for ZamZam_20:

(Start: 4 @11252 has 1 MA's), (6, 11291), (8, 11297), (9, 11327), (11, 11381),

Gene: phiCAM_18 Start: 13322, Stop: 13507, Start Num: 10

Candidate Starts for phiCAM_18:

(Start: 4 @13205 has 1 MA's), (6, 13244), (10, 13322), (11, 13334),