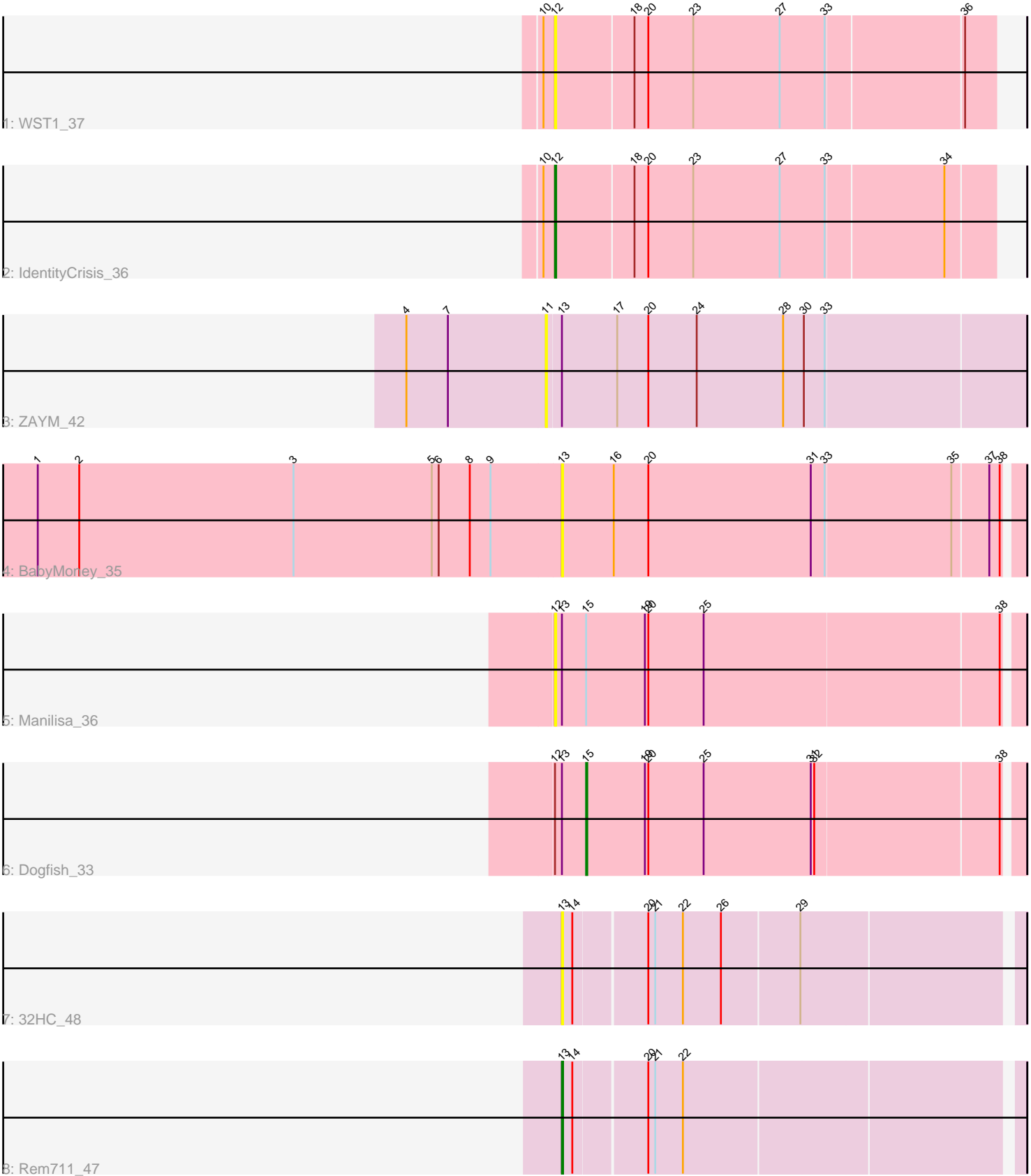


Pham 266887



Note: Tracks are now grouped by subcluster and scaled. Switching in subcluster is indicated by changes in track color. Track scale is now set by default to display the region 30 bp upstream of start 1 to 30 bp downstream of the last possible start. If this default region is judged to be packed too tightly with annotated starts, the track will be further scaled to only show that region of the ORF with annotated starts. This action will be indicated by adding "Zoomed" to the title. For starts, yellow indicates the location of called starts comprised solely of Glimmer/GeneMark auto-annotations, green indicates the location of called starts with at least 1 manual gene annotation.

Pham 266887 Report

This analysis was run 02/07/26 on database version 634.

Pham number 266887 has 8 members, 5 are drafts.

Phages represented in each track:

- Track 1 : WST1_37
- Track 2 : IdentityCrisis_36
- Track 3 : ZAYM_42
- Track 4 : BabyMoney_35
- Track 5 : Manilisa_36
- Track 6 : Dogfish_33
- Track 7 : 32HC_48
- Track 8 : Rem711_47

Summary of Final Annotations (See graph section above for start numbers):

The start number called the most often in the published annotations is 13, it was called in 1 of the 3 non-draft genes in the pham.

Genes that call this "Most Annotated" start:

- 32HC_48, BabyMoney_35, Rem711_47,

Genes that have the "Most Annotated" start but do not call it:

- Dogfish_33, Manilisa_36, ZAYM_42,

Genes that do not have the "Most Annotated" start:

- IdentityCrisis_36, WST1_37,

Summary by start number:

Start 11:

- Found in 1 of 8 (12.5%) of genes in pham
- No Manual Annotations of this start.
- Called 100.0% of time when present
- Phage (with cluster) where this start called: ZAYM_42 (DB),

Start 12:

- Found in 4 of 8 (50.0%) of genes in pham
- Manual Annotations of this start: 1 of 3

- Called 75.0% of time when present
- Phage (with cluster) where this start called: IdentityCrisis_36 (AJ), Manilisa_36 (DT), WST1_37 (AJ),

Start 13:

- Found in 6 of 8 (75.0%) of genes in pham
- Manual Annotations of this start: 1 of 3
- Called 50.0% of time when present
- Phage (with cluster) where this start called: 32HC_48 (Z), BabyMoney_35 (DT), Rem711_47 (Z),

Start 15:

- Found in 2 of 8 (25.0%) of genes in pham
- Manual Annotations of this start: 1 of 3
- Called 50.0% of time when present
- Phage (with cluster) where this start called: Dogfish_33 (DT),

Summary by clusters:

There are 4 clusters represented in this pham: DT, Z, DB, AJ,

Info for manual annotations of cluster AJ:

- Start number 12 was manually annotated 1 time for cluster AJ.

Info for manual annotations of cluster DT:

- Start number 15 was manually annotated 1 time for cluster DT.

Info for manual annotations of cluster Z:

- Start number 13 was manually annotated 1 time for cluster Z.

Gene Information:

Gene: 32HC_48 Start: 34073, Stop: 33696, Start Num: 13

Candidate Starts for 32HC_48:

(Start: 13 @34073 has 1 MA's), (14, 34064), (20, 34004), (21, 33998), (22, 33974), (26, 33941), (29, 33875),

Gene: BabyMoney_35 Start: 30196, Stop: 29807, Start Num: 13

Candidate Starts for BabyMoney_35:

(1, 30649), (2, 30613), (3, 30427), (5, 30307), (6, 30301), (8, 30274), (9, 30256), (Start: 13 @30196 has 1 MA's), (16, 30151), (20, 30121), (31, 29980), (33, 29968), (35, 29860), (37, 29830), (38, 29821),

Gene: Dogfish_33 Start: 29564, Stop: 29196, Start Num: 15

Candidate Starts for Dogfish_33:

(Start: 12 @29591 has 1 MA's), (Start: 13 @29585 has 1 MA's), (Start: 15 @29564 has 1 MA's), (19, 29513), (20, 29510), (25, 29462), (31, 29369), (32, 29366), (38, 29210),

Gene: IdentityCrisis_36 Start: 27388, Stop: 27017, Start Num: 12

Candidate Starts for IdentityCrisis_36:

(10, 27397), (Start: 12 @27388 has 1 MA's), (18, 27322), (20, 27310), (23, 27271), (27, 27196), (33, 27157), (34, 27058),

Gene: Manilisa_36 Start: 30561, Stop: 30166, Start Num: 12

Candidate Starts for Manilisa_36:

(Start: 12 @30561 has 1 MA's), (Start: 13 @30555 has 1 MA's), (Start: 15 @30534 has 1 MA's), (19, 30483), (20, 30480), (25, 30432), (38, 30180),

Gene: Rem711_47 Start: 34057, Stop: 33680, Start Num: 13

Candidate Starts for Rem711_47:

(Start: 13 @34057 has 1 MA's), (14, 34048), (20, 33988), (21, 33982), (22, 33958),

Gene: WST1_37 Start: 27245, Stop: 26874, Start Num: 12

Candidate Starts for WST1_37:

(10, 27254), (Start: 12 @27245 has 1 MA's), (18, 27179), (20, 27167), (23, 27128), (27, 27053), (33, 27014), (36, 26900),

Gene: ZAYM_42 Start: 32169, Stop: 31759, Start Num: 11

Candidate Starts for ZAYM_42:

(4, 32289), (7, 32253), (11, 32169), (Start: 13 @32157 has 1 MA's), (17, 32109), (20, 32082), (24, 32040), (28, 31965), (30, 31947), (33, 31929),