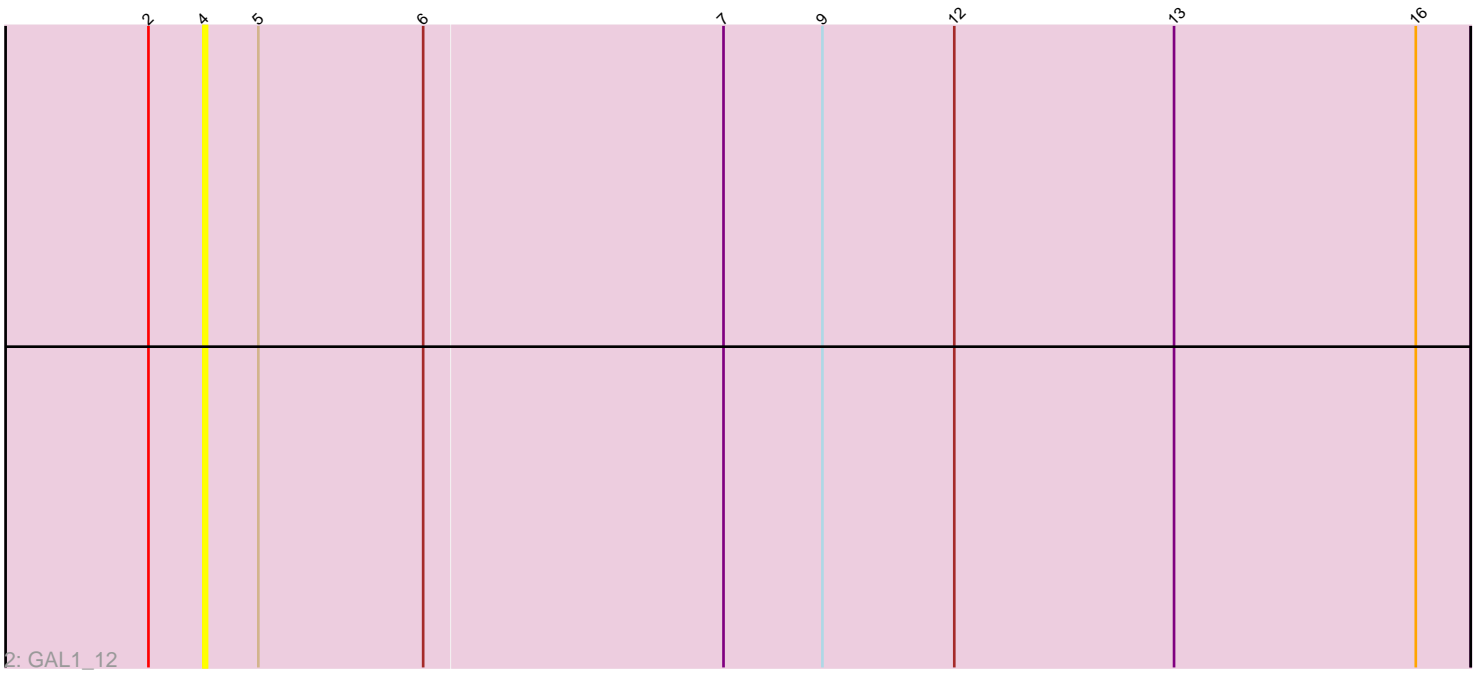
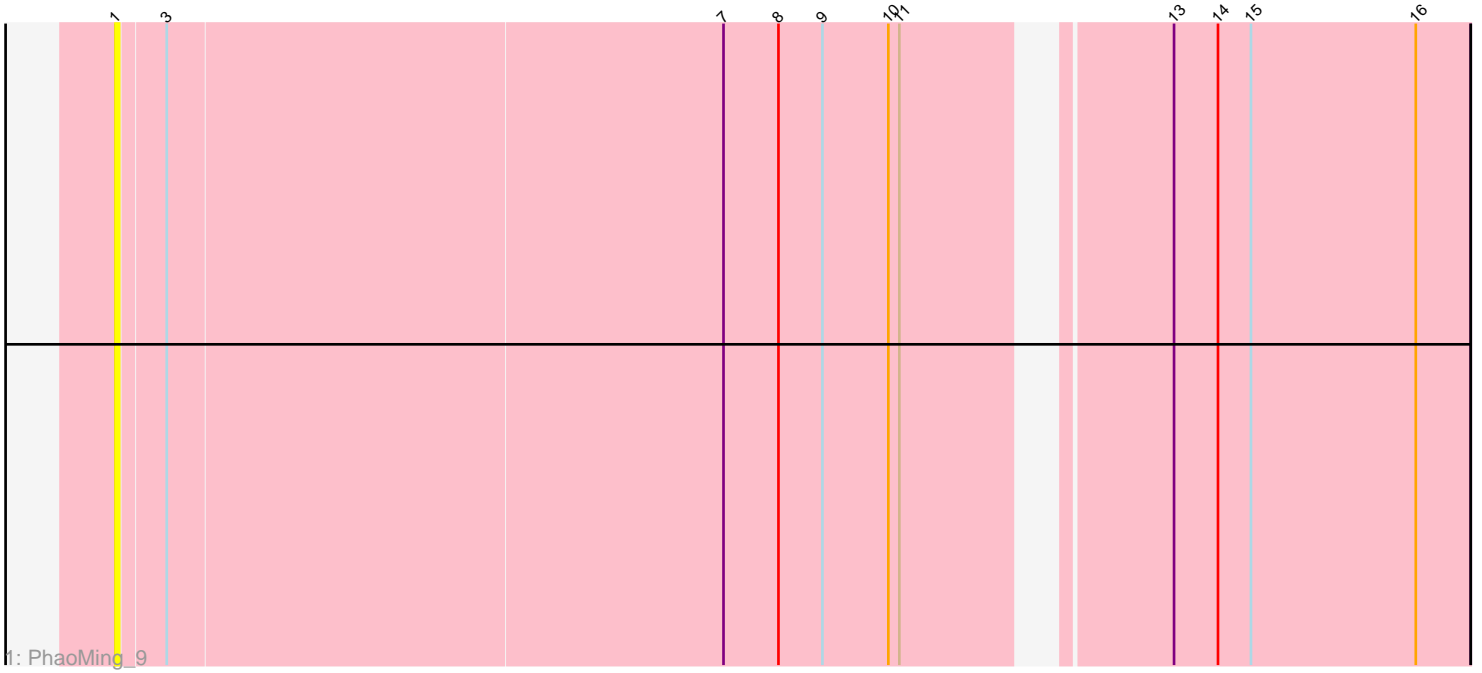


Pham 275429



Note: Tracks are now grouped by subcluster and scaled. Switching in subcluster is indicated by changes in track color. Track scale is now set by default to display the region 30 bp upstream of start 1 to 30 bp downstream of the last possible start. If this default region is judged to be packed too tightly with annotated starts, the track will be further scaled to only show that region of the ORF with annotated starts. This action will be indicated by adding "Zoomed" to the title. For starts, yellow indicates the location of called starts comprised solely of Glimmer/GeneMark auto-annotations, green indicates the location of called starts with at least 1 manual gene annotation.

Pham 275429 Report

This analysis was run 04/25/26 on database version 644.

Pham number 275429 has 2 members, 2 are drafts.

Phages represented in each track:

- Track 1 : PhaoMing_9
- Track 2 : GAL1_12

Summary of Final Annotations (See graph section above for start numbers):

This pham is comprised of all draft annotations. There are no annotations to summarize.

Summary by start number:

Start 1:

- Found in 1 of 2 (50.0%) of genes in pham
- No Manual Annotations of this start.
- Called 100.0% of time when present
- Phage (with cluster) where this start called: PhaoMing_9 (UNK),

Start 4:

- Found in 1 of 2 (50.0%) of genes in pham
- No Manual Annotations of this start.
- Called 100.0% of time when present
- Phage (with cluster) where this start called: GAL1_12 (singleton),

Summary by clusters:

There are 2 clusters represented in this pham: singleton, UNK,

Gene Information:

Gene: GAL1_12 Start: 8558, Stop: 8902, Start Num: 4

Candidate Starts for GAL1_12:

(2, 8543), (4, 8558), (5, 8573), (6, 8618), (7, 8699), (9, 8726), (12, 8762), (13, 8822), (16, 8888),

Gene: PhaoMing_9 Start: 7160, Stop: 7510, Start Num: 1

Candidate Starts for PhaoMing_9:

(1, 7160), (3, 7172), (7, 7322), (8, 7337), (9, 7349), (10, 7367), (11, 7370), (13, 7430), (14, 7442), (15, 7451), (16, 7496),