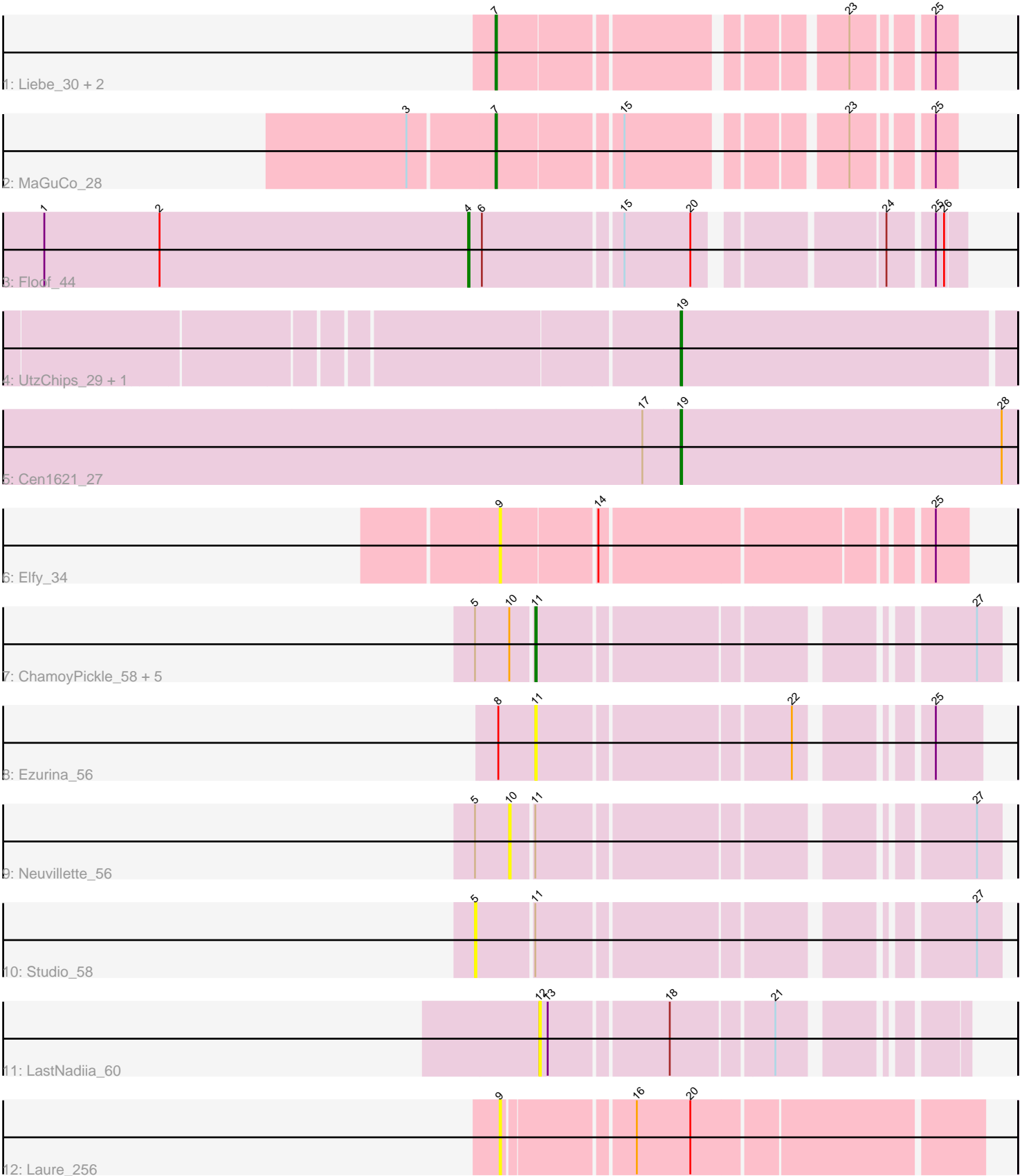


Pham 276533



Note: Tracks are now grouped by subcluster and scaled. Switching in subcluster is indicated by changes in track color. Track scale is now set by default to display the region 30 bp upstream of start 1 to 30 bp downstream of the last possible start. If this default region is judged to be packed too tightly with annotated starts, the track will be further scaled to only show that region of the ORF with annotated starts. This action will be indicated by adding "Zoomed" to the title. For starts, yellow indicates the location of called starts comprised solely of Glimmer/GeneMark auto-annotations, green indicates the location of called starts with at least 1 manual gene annotation.

## Pham 276533 Report

This analysis was run 02/07/26 on database version 634.

Pham number 276533 has 20 members, 12 are drafts.

Phages represented in each track:

- Track 1 : Liebe\_30, IUFootball\_30, Maureen\_30
- Track 2 : MaGuCo\_28
- Track 3 : Floof\_44
- Track 4 : UtzChips\_29, Barnstormer\_29
- Track 5 : Cen1621\_27
- Track 6 : Elfy\_34
- Track 7 : ChamoyPickle\_58, AnnabelLee\_58, Gerri43\_57, Roberts\_56, CardboardBox\_57, ChipsNGuac\_57
- Track 8 : Ezurina\_56
- Track 9 : Neuville\_56
- Track 10 : Studio\_58
- Track 11 : LastNadiia\_60
- Track 12 : Laure\_256

### ***Summary of Final Annotations (See graph section above for start numbers):***

The start number called the most often in the published annotations is 19, it was called in 3 of the 8 non-draft genes in the pham.

Genes that call this "Most Annotated" start:

- Barnstormer\_29, Cen1621\_27, UtzChips\_29,

Genes that have the "Most Annotated" start but do not call it:

- 

Genes that do not have the "Most Annotated" start:

- AnnabelLee\_58, CardboardBox\_57, ChamoyPickle\_58, ChipsNGuac\_57, Elfy\_34, Ezurina\_56, Floof\_44, Gerri43\_57, IUFootball\_30, LastNadiia\_60, Laure\_256, Liebe\_30, MaGuCo\_28, Maureen\_30, Neuville\_56, Roberts\_56, Studio\_58,

### **Summary by start number:**

Start 4:

- Found in 1 of 20 ( 5.0% ) of genes in pham

- Manual Annotations of this start: 1 of 8
- Called 100.0% of time when present
- Phage (with cluster) where this start called: Floof\_44 (EH),

Start 5:

- Found in 8 of 20 ( 40.0% ) of genes in pham
- No Manual Annotations of this start.
- Called 12.5% of time when present
- Phage (with cluster) where this start called: Studio\_58 (FR),

Start 7:

- Found in 4 of 20 ( 20.0% ) of genes in pham
- Manual Annotations of this start: 3 of 8
- Called 100.0% of time when present
- Phage (with cluster) where this start called: IUFootball\_30 (AZ2), Liebe\_30 (AZ2), MaGuCo\_28 (AZ2), Maureen\_30 (AZ2),

Start 9:

- Found in 2 of 20 ( 10.0% ) of genes in pham
- No Manual Annotations of this start.
- Called 100.0% of time when present
- Phage (with cluster) where this start called: Elfy\_34 (FP), Laure\_256 (UNK),

Start 10:

- Found in 7 of 20 ( 35.0% ) of genes in pham
- No Manual Annotations of this start.
- Called 14.3% of time when present
- Phage (with cluster) where this start called: Neuville\_56 (FR),

Start 11:

- Found in 9 of 20 ( 45.0% ) of genes in pham
- Manual Annotations of this start: 1 of 8
- Called 77.8% of time when present
- Phage (with cluster) where this start called: AnnabelLee\_58 (FR), CardboardBox\_57 (FR), ChamoyPickle\_58 (FR), ChipsNGuac\_57 (FR), Ezurina\_56 (FR), Gerri43\_57 (FR), Roberts\_56 (FR),

Start 12:

- Found in 1 of 20 ( 5.0% ) of genes in pham
- No Manual Annotations of this start.
- Called 100.0% of time when present
- Phage (with cluster) where this start called: LastNadiia\_60 (FR),

Start 19:

- Found in 3 of 20 ( 15.0% ) of genes in pham
- Manual Annotations of this start: 3 of 8
- Called 100.0% of time when present
- Phage (with cluster) where this start called: Barnstormer\_29 (EH), Cen1621\_27 (EH), UtzChips\_29 (EH),

### **Summary by clusters:**

There are 5 clusters represented in this pham: FP, AZ2, FR, UNK, EH,

Info for manual annotations of cluster AZ2:

- Start number 7 was manually annotated 3 times for cluster AZ2.

Info for manual annotations of cluster EH:

- Start number 4 was manually annotated 1 time for cluster EH.
- Start number 19 was manually annotated 3 times for cluster EH.

Info for manual annotations of cluster FR:

- Start number 11 was manually annotated 1 time for cluster FR.

### ***Gene Information:***

Gene: AnnabelLee\_58 Start: 34806, Stop: 34513, Start Num: 11

Candidate Starts for AnnabelLee\_58:

(5, 34845), (10, 34821), (Start: 11 @34806 has 1 MA's), (27, 34530),

Gene: Barnstormer\_29 Start: 22719, Stop: 22958, Start Num: 19

Candidate Starts for Barnstormer\_29:

(Start: 19 @22719 has 3 MA's),

Gene: CardboardBox\_57 Start: 34809, Stop: 34516, Start Num: 11

Candidate Starts for CardboardBox\_57:

(5, 34848), (10, 34824), (Start: 11 @34809 has 1 MA's), (27, 34533),

Gene: Cen1621\_27 Start: 21303, Stop: 21548, Start Num: 19

Candidate Starts for Cen1621\_27:

(17, 21276), (Start: 19 @21303 has 3 MA's), (28, 21537),

Gene: ChamoyPickle\_58 Start: 35349, Stop: 35056, Start Num: 11

Candidate Starts for ChamoyPickle\_58:

(5, 35388), (10, 35364), (Start: 11 @35349 has 1 MA's), (27, 35073),

Gene: ChipsNGuac\_57 Start: 34809, Stop: 34516, Start Num: 11

Candidate Starts for ChipsNGuac\_57:

(5, 34848), (10, 34824), (Start: 11 @34809 has 1 MA's), (27, 34533),

Gene: Elfy\_34 Start: 24565, Stop: 24873, Start Num: 9

Candidate Starts for Elfy\_34:

(9, 24565), (14, 24631), (25, 24850),

Gene: Ezurina\_56 Start: 35708, Stop: 35430, Start Num: 11

Candidate Starts for Ezurina\_56:

(8, 35735), (Start: 11 @35708 has 1 MA's), (22, 35537), (25, 35462),

Gene: Floof\_44 Start: 27937, Stop: 28257, Start Num: 4

Candidate Starts for Floof\_44:

(1, 27628), (2, 27712), (Start: 4 @27937 has 1 MA's), (6, 27946), (15, 28042), (20, 28090), (24, 28207), (25, 28237), (26, 28243),

Gene: Gerri43\_57 Start: 34809, Stop: 34516, Start Num: 11  
Candidate Starts for Gerri43\_57:  
(5, 34848), (10, 34824), (Start: 11 @34809 has 1 MA's), (27, 34533),

Gene: IUFootball\_30 Start: 24030, Stop: 24314, Start Num: 7  
Candidate Starts for IUFootball\_30:  
(Start: 7 @24030 has 3 MA's), (23, 24252), (25, 24300),

Gene: LastNadiia\_60 Start: 38524, Stop: 38258, Start Num: 12  
Candidate Starts for LastNadiia\_60:  
(12, 38524), (13, 38518), (18, 38437), (21, 38368),

Gene: Laure\_256 Start: 146563, Stop: 146889, Start Num: 9  
Candidate Starts for Laure\_256:  
(9, 146563), (16, 146650), (20, 146689),

Gene: Liebe\_30 Start: 24030, Stop: 24314, Start Num: 7  
Candidate Starts for Liebe\_30:  
(Start: 7 @24030 has 3 MA's), (23, 24252), (25, 24300),

Gene: MaGuCo\_28 Start: 22831, Stop: 23115, Start Num: 7  
Candidate Starts for MaGuCo\_28:  
(3, 22771), (Start: 7 @22831 has 3 MA's), (15, 22915), (23, 23053), (25, 23101),

Gene: Maureen\_30 Start: 24030, Stop: 24314, Start Num: 7  
Candidate Starts for Maureen\_30:  
(Start: 7 @24030 has 3 MA's), (23, 24252), (25, 24300),

Gene: Neuville\_56 Start: 34824, Stop: 34516, Start Num: 10  
Candidate Starts for Neuville\_56:  
(5, 34848), (10, 34824), (Start: 11 @34809 has 1 MA's), (27, 34533),

Gene: Roberts\_56 Start: 34809, Stop: 34516, Start Num: 11  
Candidate Starts for Roberts\_56:  
(5, 34848), (10, 34824), (Start: 11 @34809 has 1 MA's), (27, 34533),

Gene: Studio\_58 Start: 36038, Stop: 35706, Start Num: 5  
Candidate Starts for Studio\_58:  
(5, 36038), (Start: 11 @35999 has 1 MA's), (27, 35723),

Gene: UtzChips\_29 Start: 22704, Stop: 22943, Start Num: 19  
Candidate Starts for UtzChips\_29:  
(Start: 19 @22704 has 3 MA's),