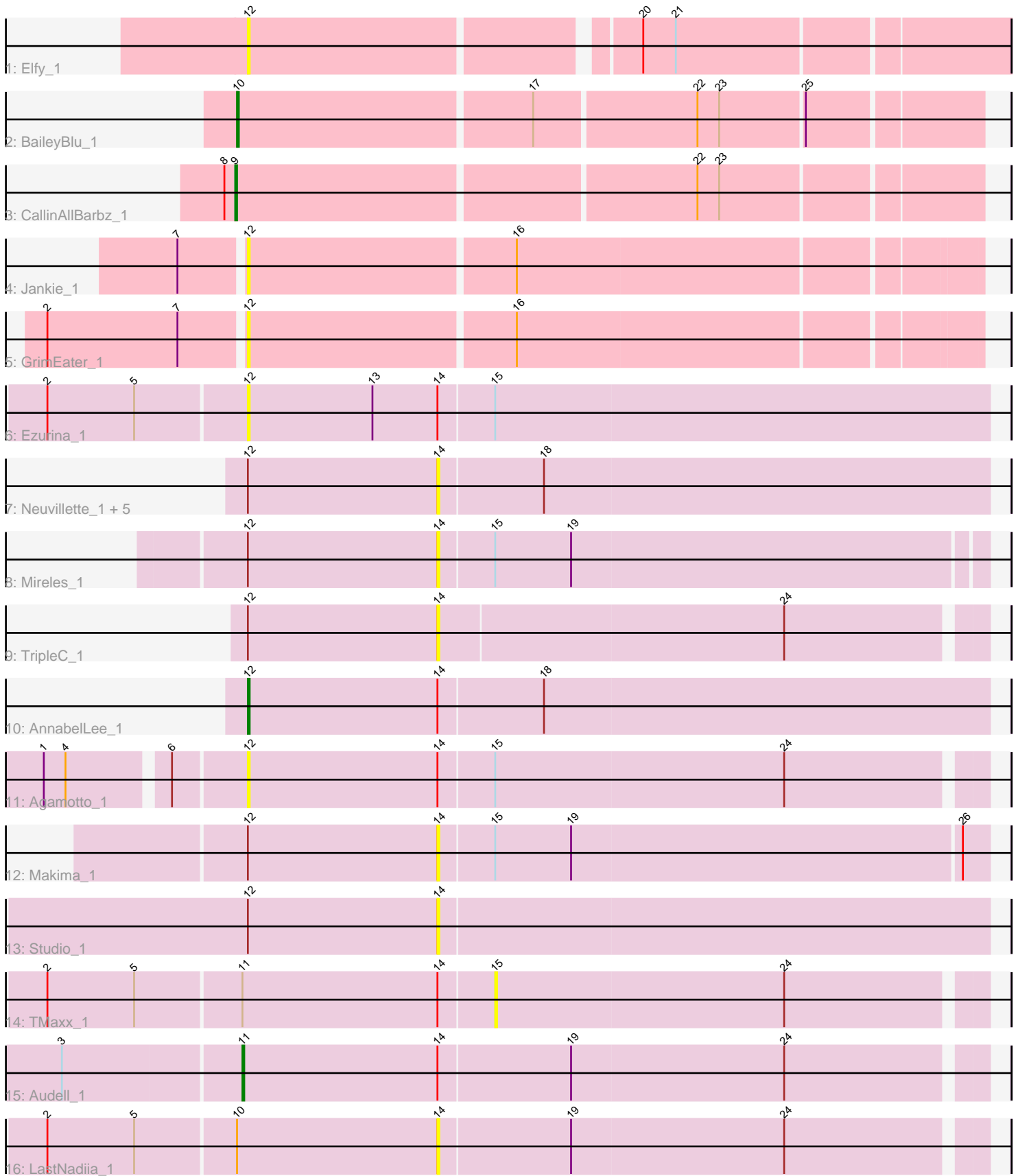


# Pham 276538



Note: Tracks are now grouped by subcluster and scaled. Switching in subcluster is indicated by changes in track color. Track scale is now set by default to display the region 30 bp upstream of start 1 to 30 bp downstream of the last possible start. If this default region is judged to be packed too tightly with annotated starts, the track will be further scaled to only show that region of the ORF with annotated starts. This action will be indicated by adding "Zoomed" to the title. For starts, yellow indicates the location of called starts comprised solely of Glimmer/GeneMark auto-annotations, green indicates the location of called starts with at least 1 manual gene annotation.

## Pham 276538 Report

This analysis was run 02/07/26 on database version 634.

Pham number 276538 has 21 members, 17 are drafts.

Phages represented in each track:

- Track 1 : Elfy\_1
- Track 2 : BaileyBlu\_1
- Track 3 : CallinAllBarbz\_1
- Track 4 : Jankie\_1
- Track 5 : GrimEater\_1
- Track 6 : Ezurina\_1
- Track 7 : Neuville\_1, ChamoyPickle\_1, CardboardBox\_1, Gerri43\_1, Roberts\_1, ChipsNGuac\_1
- Track 8 : Mireles\_1
- Track 9 : TripleC\_1
- Track 10 : AnnabelLee\_1
- Track 11 : Agamotto\_1
- Track 12 : Makima\_1
- Track 13 : Studio\_1
- Track 14 : TMaxx\_1
- Track 15 : Audell\_1
- Track 16 : LastNadiia\_1

### ***Summary of Final Annotations (See graph section above for start numbers):***

The start number called the most often in the published annotations is 10, it was called in 1 of the 4 non-draft genes in the pham.

Genes that call this "Most Annotated" start:

- BaileyBlu\_1,

Genes that have the "Most Annotated" start but do not call it:

- LastNadiia\_1,

Genes that do not have the "Most Annotated" start:

- Agamotto\_1, AnnabelLee\_1, Audell\_1, CallinAllBarbz\_1, CardboardBox\_1, ChamoyPickle\_1, ChipsNGuac\_1, Elfy\_1, Ezurina\_1, Gerri43\_1, GrimEater\_1, Jankie\_1, Makima\_1, Mireles\_1, Neuville\_1, Roberts\_1, Studio\_1, TMaxx\_1, TripleC\_1,

## Summary by start number:

### Start 9:

- Found in 1 of 21 ( 4.8% ) of genes in pham
- Manual Annotations of this start: 1 of 4
- Called 100.0% of time when present
- Phage (with cluster) where this start called: CallinAllBarbz\_1 (FP),

### Start 10:

- Found in 2 of 21 ( 9.5% ) of genes in pham
- Manual Annotations of this start: 1 of 4
- Called 50.0% of time when present
- Phage (with cluster) where this start called: BaileyBlu\_1 (FP),

### Start 11:

- Found in 2 of 21 ( 9.5% ) of genes in pham
- Manual Annotations of this start: 1 of 4
- Called 50.0% of time when present
- Phage (with cluster) where this start called: Audell\_1 (FR),

### Start 12:

- Found in 16 of 21 ( 76.2% ) of genes in pham
- Manual Annotations of this start: 1 of 4
- Called 37.5% of time when present
- Phage (with cluster) where this start called: Agamotto\_1 (FR), AnnabelleLee\_1 (FR), Elfy\_1 (FP), Ezurina\_1 (FR), GrimEater\_1 (FP), Jankie\_1 (FP),

### Start 14:

- Found in 16 of 21 ( 76.2% ) of genes in pham
- No Manual Annotations of this start.
- Called 68.8% of time when present
- Phage (with cluster) where this start called: CardboardBox\_1 (FR), ChamoyPickle\_1 (FR), ChipsNGuac\_1 (FR), Gerri43\_1 (FR), LastNadiia\_1 (FR), Makima\_1 (FR), Mireles\_1 (FR), Neuville\_1 (FR), Roberts\_1 (FR), Studio\_1 (FR), TripleC\_1 (FR),

### Start 15:

- Found in 5 of 21 ( 23.8% ) of genes in pham
- No Manual Annotations of this start.
- Called 20.0% of time when present
- Phage (with cluster) where this start called: TMaxx\_1 (FR),

## Summary by clusters:

There are 2 clusters represented in this pham: FP, FR,

### Info for manual annotations of cluster FP:

- Start number 9 was manually annotated 1 time for cluster FP.
- Start number 10 was manually annotated 1 time for cluster FP.

### Info for manual annotations of cluster FR:

- Start number 11 was manually annotated 1 time for cluster FR.
- Start number 12 was manually annotated 1 time for cluster FR.

**Gene Information:**

Gene: Agamotto\_1 Start: 124, Stop: 522, Start Num: 12

Candidate Starts for Agamotto\_1:

(1, 22), (4, 34), (6, 85), (Start: 12 @124 has 1 MA's), (14, 229), (15, 259), (24, 418),

Gene: AnnabelLee\_1 Start: 146, Stop: 553, Start Num: 12

Candidate Starts for AnnabelLee\_1:

(Start: 12 @146 has 1 MA's), (14, 251), (18, 308),

Gene: Audell\_1 Start: 128, Stop: 529, Start Num: 11

Candidate Starts for Audell\_1:

(3, 32), (Start: 11 @128 has 1 MA's), (14, 236), (19, 308), (24, 425),

Gene: BaileyBlu\_1 Start: 115, Stop: 510, Start Num: 10

Candidate Starts for BaileyBlu\_1:

(Start: 10 @115 has 1 MA's), (17, 274), (22, 361), (23, 373), (25, 418),

Gene: CallinAllBarbz\_1 Start: 117, Stop: 512, Start Num: 9

Candidate Starts for CallinAllBarbz\_1:

(8, 111), (Start: 9 @117 has 1 MA's), (22, 363), (23, 375),

Gene: CardboardBox\_1 Start: 251, Stop: 553, Start Num: 14

Candidate Starts for CardboardBox\_1:

(Start: 12 @146 has 1 MA's), (14, 251), (18, 308),

Gene: ChamoyPickle\_1 Start: 251, Stop: 553, Start Num: 14

Candidate Starts for ChamoyPickle\_1:

(Start: 12 @146 has 1 MA's), (14, 251), (18, 308),

Gene: ChipsNGuac\_1 Start: 251, Stop: 553, Start Num: 14

Candidate Starts for ChipsNGuac\_1:

(Start: 12 @146 has 1 MA's), (14, 251), (18, 308),

Gene: Elfy\_1 Start: 114, Stop: 509, Start Num: 12

Candidate Starts for Elfy\_1:

(Start: 12 @114 has 1 MA's), (20, 315), (21, 333),

Gene: Ezurina\_1 Start: 132, Stop: 539, Start Num: 12

Candidate Starts for Ezurina\_1:

(2, 24), (5, 72), (Start: 12 @132 has 1 MA's), (13, 201), (14, 237), (15, 267),

Gene: Gerri43\_1 Start: 251, Stop: 553, Start Num: 14

Candidate Starts for Gerri43\_1:

(Start: 12 @146 has 1 MA's), (14, 251), (18, 308),

Gene: GrimEater\_1 Start: 118, Stop: 507, Start Num: 12

Candidate Starts for GrimEater\_1:

(2, 13), (7, 85), (Start: 12 @118 has 1 MA's), (16, 262),

Gene: Jankie\_1 Start: 117, Stop: 506, Start Num: 12

Candidate Starts for Jankie\_1:

(7, 84), (Start: 12 @117 has 1 MA's), (16, 261),

Gene: LastNadiia\_1 Start: 237, Stop: 530, Start Num: 14

Candidate Starts for LastNadiia\_1:

(2, 24), (5, 72), (Start: 10 @126 has 1 MA's), (14, 237), (19, 309), (24, 426),

Gene: Makima\_1 Start: 200, Stop: 499, Start Num: 14

Candidate Starts for Makima\_1:

(Start: 12 @95 has 1 MA's), (14, 200), (15, 230), (19, 272), (26, 485),

Gene: Mireles\_1 Start: 200, Stop: 496, Start Num: 14

Candidate Starts for Mireles\_1:

(Start: 12 @95 has 1 MA's), (14, 200), (15, 230), (19, 272),

Gene: Neuville\_1 Start: 251, Stop: 553, Start Num: 14

Candidate Starts for Neuville\_1:

(Start: 12 @146 has 1 MA's), (14, 251), (18, 308),

Gene: Roberts\_1 Start: 251, Stop: 553, Start Num: 14

Candidate Starts for Roberts\_1:

(Start: 12 @146 has 1 MA's), (14, 251), (18, 308),

Gene: Studio\_1 Start: 240, Stop: 542, Start Num: 14

Candidate Starts for Studio\_1:

(Start: 12 @135 has 1 MA's), (14, 240),

Gene: TMaxx\_1 Start: 267, Stop: 530, Start Num: 15

Candidate Starts for TMaxx\_1:

(2, 24), (5, 72), (Start: 11 @129 has 1 MA's), (14, 237), (15, 267), (24, 426),

Gene: TripleC\_1 Start: 252, Stop: 545, Start Num: 14

Candidate Starts for TripleC\_1:

(Start: 12 @147 has 1 MA's), (14, 252), (24, 441),