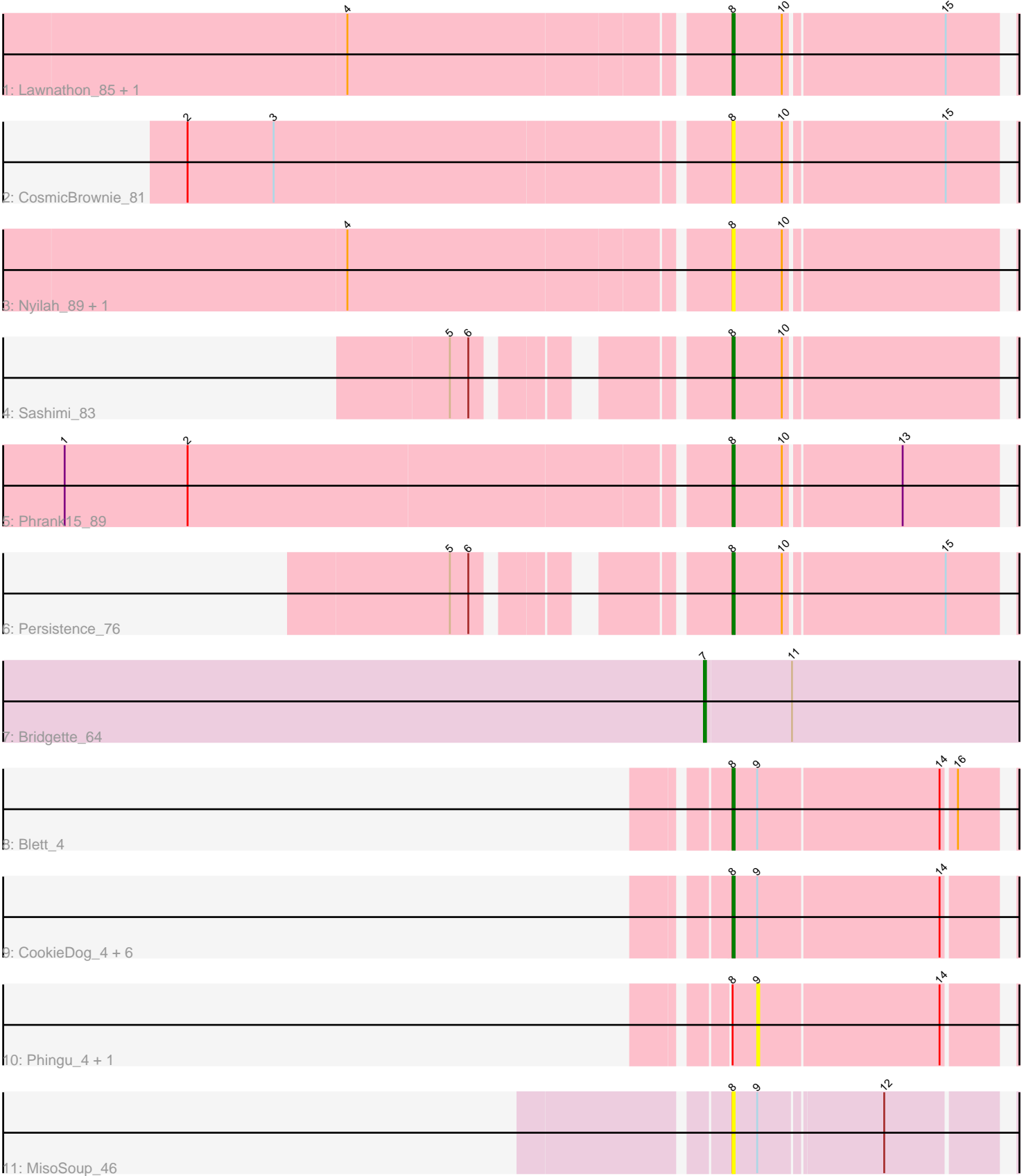


Pham 276563



Note: Tracks are now grouped by subcluster and scaled. Switching in subcluster is indicated by changes in track color. Track scale is now set by default to display the region 30 bp upstream of start 1 to 30 bp downstream of the last possible start. If this default region is judged to be packed too tightly with annotated starts, the track will be further scaled to only show that region of the ORF with annotated starts. This action will be indicated by adding "Zoomed" to the title. For starts, yellow indicates the location of called starts comprised solely of Glimmer/GeneMark auto-annotations, green indicates the location of called starts with at least 1 manual gene annotation.

## Pham 276563 Report

This analysis was run 02/07/26 on database version 634.

Pham number 276563 has 20 members, 9 are drafts.

Phages represented in each track:

- Track 1 : Lawnathon\_85, MurphyJoseph\_80
- Track 2 : CosmicBrownie\_81
- Track 3 : Nyilah\_89, GumGum\_89
- Track 4 : Sashimi\_83
- Track 5 : Phrank15\_89
- Track 6 : Persistence\_76
- Track 7 : Bridgette\_64
- Track 8 : Blett\_4
- Track 9 : CookieDog\_4, Jakelyne\_4, MenE\_4, Bush\_4, NCRodriguez\_4, Losacky\_4, Warren\_4
- Track 10 : Phingu\_4, Mariel\_4
- Track 11 : MisoSoup\_46

### ***Summary of Final Annotations (See graph section above for start numbers):***

The start number called the most often in the published annotations is 8, it was called in 10 of the 11 non-draft genes in the pham.

Genes that call this "Most Annotated" start:

- Blett\_4, Bush\_4, CookieDog\_4, CosmicBrownie\_81, GumGum\_89, Jakelyne\_4, Lawnathon\_85, Losacky\_4, MenE\_4, MisoSoup\_46, MurphyJoseph\_80, NCRodriguez\_4, Nyilah\_89, Persistence\_76, Phrank15\_89, Sashimi\_83, Warren\_4,

Genes that have the "Most Annotated" start but do not call it:

- Mariel\_4, Phingu\_4,

Genes that do not have the "Most Annotated" start:

- Bridgette\_64,

### **Summary by start number:**

Start 7:

- Found in 1 of 20 ( 5.0% ) of genes in pham
- Manual Annotations of this start: 1 of 11

- Called 100.0% of time when present
- Phage (with cluster) where this start called: Bridgette\_64 (FA),

Start 8:

- Found in 19 of 20 ( 95.0% ) of genes in pham
- Manual Annotations of this start: 10 of 11
- Called 89.5% of time when present
- Phage (with cluster) where this start called: Blett\_4 (GA), Bush\_4 (GA), CookieDog\_4 (GA), CosmicBrownie\_81 (AY), GumGum\_89 (AY), Jakelyne\_4 (GA), Lawnathon\_85 (AY), Losacky\_4 (GA), MenE\_4 (GA), MisoSoup\_46 (UNK), MurphyJoseph\_80 (AY), NCRodriguez\_4 (GA), Nyilah\_89 (AY), Persistence\_76 (AY), Phrank15\_89 (AY), Sashimi\_83 (AY), Warren\_4 (GA),

Start 9:

- Found in 11 of 20 ( 55.0% ) of genes in pham
- No Manual Annotations of this start.
- Called 18.2% of time when present
- Phage (with cluster) where this start called: Mariel\_4 (GA), Phingu\_4 (GA),

### **Summary by clusters:**

There are 4 clusters represented in this pham: AY, FA, UNK, GA,

Info for manual annotations of cluster AY:

- Start number 8 was manually annotated 4 times for cluster AY.

Info for manual annotations of cluster FA:

- Start number 7 was manually annotated 1 time for cluster FA.

Info for manual annotations of cluster GA:

- Start number 8 was manually annotated 6 times for cluster GA.

### **Gene Information:**

Gene: Blett\_4 Start: 877, Stop: 1053, Start Num: 8

Candidate Starts for Blett\_4:

(Start: 8 @877 has 10 MA's), (9, 889), (14, 976), (16, 982),

Gene: Bridgette\_64 Start: 40518, Stop: 40730, Start Num: 7

Candidate Starts for Bridgette\_64:

(Start: 7 @40518 has 1 MA's), (11, 40560),

Gene: Bush\_4 Start: 883, Stop: 1059, Start Num: 8

Candidate Starts for Bush\_4:

(Start: 8 @883 has 10 MA's), (9, 895), (14, 982),

Gene: CookieDog\_4 Start: 883, Stop: 1059, Start Num: 8

Candidate Starts for CookieDog\_4:

(Start: 8 @883 has 10 MA's), (9, 895), (14, 982),

Gene: CosmicBrownie\_81 Start: 46062, Stop: 46241, Start Num: 8  
Candidate Starts for CosmicBrownie\_81:  
(2, 45807), (3, 45849), (Start: 8 @46062 has 10 MA's), (10, 46086), (15, 46161),

Gene: GumGum\_89 Start: 48026, Stop: 48205, Start Num: 8  
Candidate Starts for GumGum\_89:  
(4, 47849), (Start: 8 @48026 has 10 MA's), (10, 48050),

Gene: Jakelyne\_4 Start: 877, Stop: 1053, Start Num: 8  
Candidate Starts for Jakelyne\_4:  
(Start: 8 @877 has 10 MA's), (9, 889), (14, 976),

Gene: Lawnathon\_85 Start: 47098, Stop: 47277, Start Num: 8  
Candidate Starts for Lawnathon\_85:  
(4, 46921), (Start: 8 @47098 has 10 MA's), (10, 47122), (15, 47197),

Gene: Losacky\_4 Start: 874, Stop: 1050, Start Num: 8  
Candidate Starts for Losacky\_4:  
(Start: 8 @874 has 10 MA's), (9, 886), (14, 973),

Gene: Mariel\_4 Start: 895, Stop: 1059, Start Num: 9  
Candidate Starts for Mariel\_4:  
(Start: 8 @883 has 10 MA's), (9, 895), (14, 982),

Gene: MenE\_4 Start: 883, Stop: 1059, Start Num: 8  
Candidate Starts for MenE\_4:  
(Start: 8 @883 has 10 MA's), (9, 895), (14, 982),

Gene: MisoSoup\_46 Start: 31270, Stop: 31097, Start Num: 8  
Candidate Starts for MisoSoup\_46:  
(Start: 8 @31270 has 10 MA's), (9, 31258), (12, 31201),

Gene: MurphyJoseph\_80 Start: 45950, Stop: 46129, Start Num: 8  
Candidate Starts for MurphyJoseph\_80:  
(4, 45773), (Start: 8 @45950 has 10 MA's), (10, 45974), (15, 46049),

Gene: NCRodriguez\_4 Start: 886, Stop: 1062, Start Num: 8  
Candidate Starts for NCRodriguez\_4:  
(Start: 8 @886 has 10 MA's), (9, 898), (14, 985),

Gene: Nyilah\_89 Start: 47246, Stop: 47425, Start Num: 8  
Candidate Starts for Nyilah\_89:  
(4, 47069), (Start: 8 @47246 has 10 MA's), (10, 47270),

Gene: Persistence\_76 Start: 45050, Stop: 45229, Start Num: 8  
Candidate Starts for Persistence\_76:  
(5, 44945), (6, 44954), (Start: 8 @45050 has 10 MA's), (10, 45074), (15, 45149),

Gene: Phingu\_4 Start: 898, Stop: 1062, Start Num: 9  
Candidate Starts for Phingu\_4:  
(Start: 8 @886 has 10 MA's), (9, 898), (14, 985),

Gene: Phrank15\_89 Start: 48334, Stop: 48513, Start Num: 8

Candidate Starts for Phrank15\_89:

(1, 48019), (2, 48079), (Start: 8 @48334 has 10 MA's), (10, 48358), (13, 48412),

Gene: Sashimi\_83 Start: 47335, Stop: 47514, Start Num: 8

Candidate Starts for Sashimi\_83:

(5, 47230), (6, 47239), (Start: 8 @47335 has 10 MA's), (10, 47359),

Gene: Warren\_4 Start: 886, Stop: 1062, Start Num: 8

Candidate Starts for Warren\_4:

(Start: 8 @886 has 10 MA's), (9, 898), (14, 985),