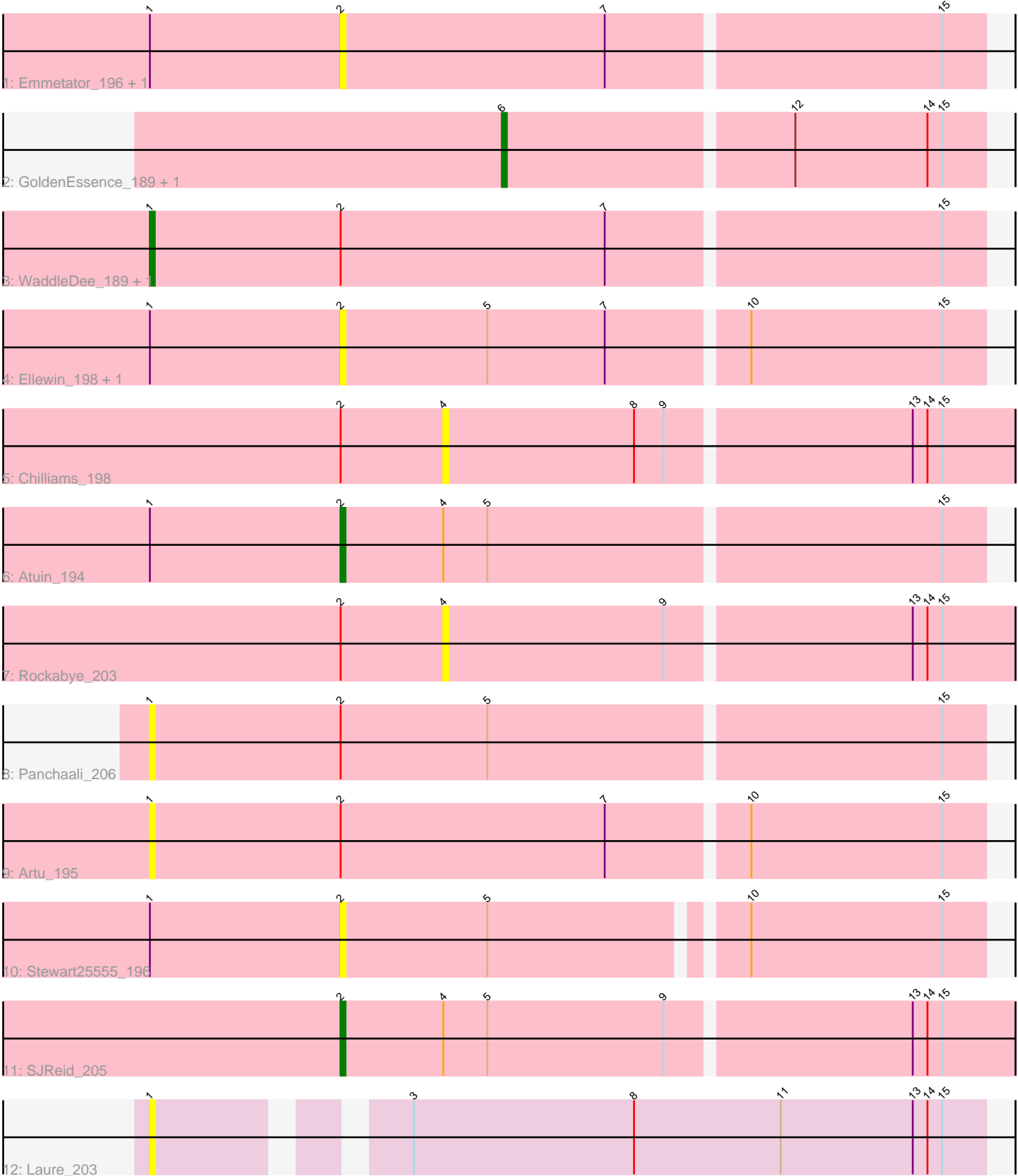


Pham 276672



Note: Tracks are now grouped by subcluster and scaled. Switching in subcluster is indicated by changes in track color. Track scale is now set by default to display the region 30 bp upstream of start 1 to 30 bp downstream of the last possible start. If this default region is judged to be packed too tightly with annotated starts, the track will be further scaled to only show that region of the ORF with annotated starts. This action will be indicated by adding "Zoomed" to the title. For starts, yellow indicates the location of called starts comprised solely of Glimmer/GeneMark auto-annotations, green indicates the location of called starts with at least 1 manual gene annotation.

## Pham 276672 Report

This analysis was run 02/07/26 on database version 634.

Pham number 276672 has 16 members, 10 are drafts.

Phages represented in each track:

- Track 1 : Emmetator\_196, BooTeria\_201
- Track 2 : GoldenEssence\_189, Talia1610\_202
- Track 3 : WaddleDee\_189, DunneganBoMo\_193
- Track 4 : Ellewin\_198, KSunshine22\_197
- Track 5 : Chilliams\_198
- Track 6 : Atuin\_194
- Track 7 : Rockabye\_203
- Track 8 : Panchaali\_206
- Track 9 : Artu\_195
- Track 10 : Stewart25555\_196
- Track 11 : SJReid\_205
- Track 12 : Laure\_203

### ***Summary of Final Annotations (See graph section above for start numbers):***

The start number called the most often in the published annotations is 2, it was called in 2 of the 6 non-draft genes in the pham.

Genes that call this "Most Annotated" start:

- Atuin\_194, BooTeria\_201, Ellewin\_198, Emmetator\_196, KSunshine22\_197, SJReid\_205, Stewart25555\_196,

Genes that have the "Most Annotated" start but do not call it:

- Artu\_195, Chilliams\_198, DunneganBoMo\_193, Panchaali\_206, Rockabye\_203, WaddleDee\_189,

Genes that do not have the "Most Annotated" start:

- GoldenEssence\_189, Laure\_203, Talia1610\_202,

### **Summary by start number:**

Start 1:

- Found in 11 of 16 ( 68.8% ) of genes in pham
- Manual Annotations of this start: 2 of 6

- Called 45.5% of time when present
- Phage (with cluster) where this start called: Artu\_195 (FC), DunneganBoMo\_193 (FC), Laure\_203 (UNK), Panchaali\_206 (FC), WaddleDee\_189 (FC),

#### Start 2:

- Found in 13 of 16 ( 81.2% ) of genes in pham
- Manual Annotations of this start: 2 of 6
- Called 53.8% of time when present
- Phage (with cluster) where this start called: Atuin\_194 (FC), BooTeria\_201 (FC), Ellewin\_198 (FC), Emmetator\_196 (FC), KSunshine22\_197 (FC), SJReid\_205 (FC), Stewart25555\_196 (FC),

#### Start 4:

- Found in 4 of 16 ( 25.0% ) of genes in pham
- No Manual Annotations of this start.
- Called 50.0% of time when present
- Phage (with cluster) where this start called: Chilliamps\_198 (FC), Rockabye\_203 (FC),

#### Start 6:

- Found in 2 of 16 ( 12.5% ) of genes in pham
- Manual Annotations of this start: 2 of 6
- Called 100.0% of time when present
- Phage (with cluster) where this start called: GoldenEssence\_189 (FC), Talia1610\_202 (FC),

### Summary by clusters:

There are 2 clusters represented in this pham: UNK, FC,

Info for manual annotations of cluster FC:

- Start number 1 was manually annotated 2 times for cluster FC.
- Start number 2 was manually annotated 2 times for cluster FC.
- Start number 6 was manually annotated 2 times for cluster FC.

### Gene Information:

Gene: Artu\_195 Start: 144853, Stop: 145020, Start Num: 1

Candidate Starts for Artu\_195:

(Start: 1 @144853 has 2 MA's), (Start: 2 @144892 has 2 MA's), (7, 144946), (10, 144973), (15, 145012),

Gene: Atuin\_194 Start: 138696, Stop: 138824, Start Num: 2

Candidate Starts for Atuin\_194:

(Start: 1 @138657 has 2 MA's), (Start: 2 @138696 has 2 MA's), (4, 138717), (5, 138726), (15, 138816),

Gene: BooTeria\_201 Start: 144398, Stop: 144526, Start Num: 2

Candidate Starts for BooTeria\_201:

(Start: 1 @144359 has 2 MA's), (Start: 2 @144398 has 2 MA's), (7, 144452), (15, 144518),

Gene: Chilliams\_198 Start: 136108, Stop: 136221, Start Num: 4

Candidate Starts for Chilliams\_198:

(Start: 2 @136087 has 2 MA's), (4, 136108), (8, 136147), (9, 136153), (13, 136201), (14, 136204), (15, 136207),

Gene: DunneganBoMo\_193 Start: 143824, Stop: 143991, Start Num: 1

Candidate Starts for DunneganBoMo\_193:

(Start: 1 @143824 has 2 MA's), (Start: 2 @143863 has 2 MA's), (7, 143917), (15, 143983),

Gene: Ellewin\_198 Start: 143129, Stop: 143257, Start Num: 2

Candidate Starts for Ellewin\_198:

(Start: 1 @143090 has 2 MA's), (Start: 2 @143129 has 2 MA's), (5, 143159), (7, 143183), (10, 143210), (15, 143249),

Gene: Emmetator\_196 Start: 143262, Stop: 143390, Start Num: 2

Candidate Starts for Emmetator\_196:

(Start: 1 @143223 has 2 MA's), (Start: 2 @143262 has 2 MA's), (7, 143316), (15, 143382),

Gene: GoldenEssence\_189 Start: 134759, Stop: 134854, Start Num: 6

Candidate Starts for GoldenEssence\_189:

(Start: 6 @134759 has 2 MA's), (12, 134816), (14, 134843), (15, 134846),

Gene: KSunshine22\_197 Start: 142540, Stop: 142668, Start Num: 2

Candidate Starts for KSunshine22\_197:

(Start: 1 @142501 has 2 MA's), (Start: 2 @142540 has 2 MA's), (5, 142570), (7, 142594), (10, 142621), (15, 142660),

Gene: Laure\_203 Start: 128770, Stop: 128928, Start Num: 1

Candidate Starts for Laure\_203:

(Start: 1 @128770 has 2 MA's), (3, 128812), (8, 128857), (11, 128887), (13, 128914), (14, 128917), (15, 128920),

Gene: Panchaali\_206 Start: 144586, Stop: 144753, Start Num: 1

Candidate Starts for Panchaali\_206:

(Start: 1 @144586 has 2 MA's), (Start: 2 @144625 has 2 MA's), (5, 144655), (15, 144745),

Gene: Rockabye\_203 Start: 134890, Stop: 135003, Start Num: 4

Candidate Starts for Rockabye\_203:

(Start: 2 @134869 has 2 MA's), (4, 134890), (9, 134935), (13, 134983), (14, 134986), (15, 134989),

Gene: SJReid\_205 Start: 133658, Stop: 133792, Start Num: 2

Candidate Starts for SJReid\_205:

(Start: 2 @133658 has 2 MA's), (4, 133679), (5, 133688), (9, 133724), (13, 133772), (14, 133775), (15, 133778),

Gene: Stewart25555\_196 Start: 141926, Stop: 142051, Start Num: 2

Candidate Starts for Stewart25555\_196:

(Start: 1 @141887 has 2 MA's), (Start: 2 @141926 has 2 MA's), (5, 141956), (10, 142004), (15, 142043),

Gene: Talia1610\_202 Start: 140576, Stop: 140671, Start Num: 6

Candidate Starts for Talia1610\_202:

(Start: 6 @140576 has 2 MA's), (12, 140633), (14, 140660), (15, 140663),

Gene: WaddleDee\_189 Start: 142285, Stop: 142452, Start Num: 1

Candidate Starts for WaddleDee\_189:

(Start: 1 @142285 has 2 MA's), (Start: 2 @142324 has 2 MA's), (7, 142378), (15, 142444),