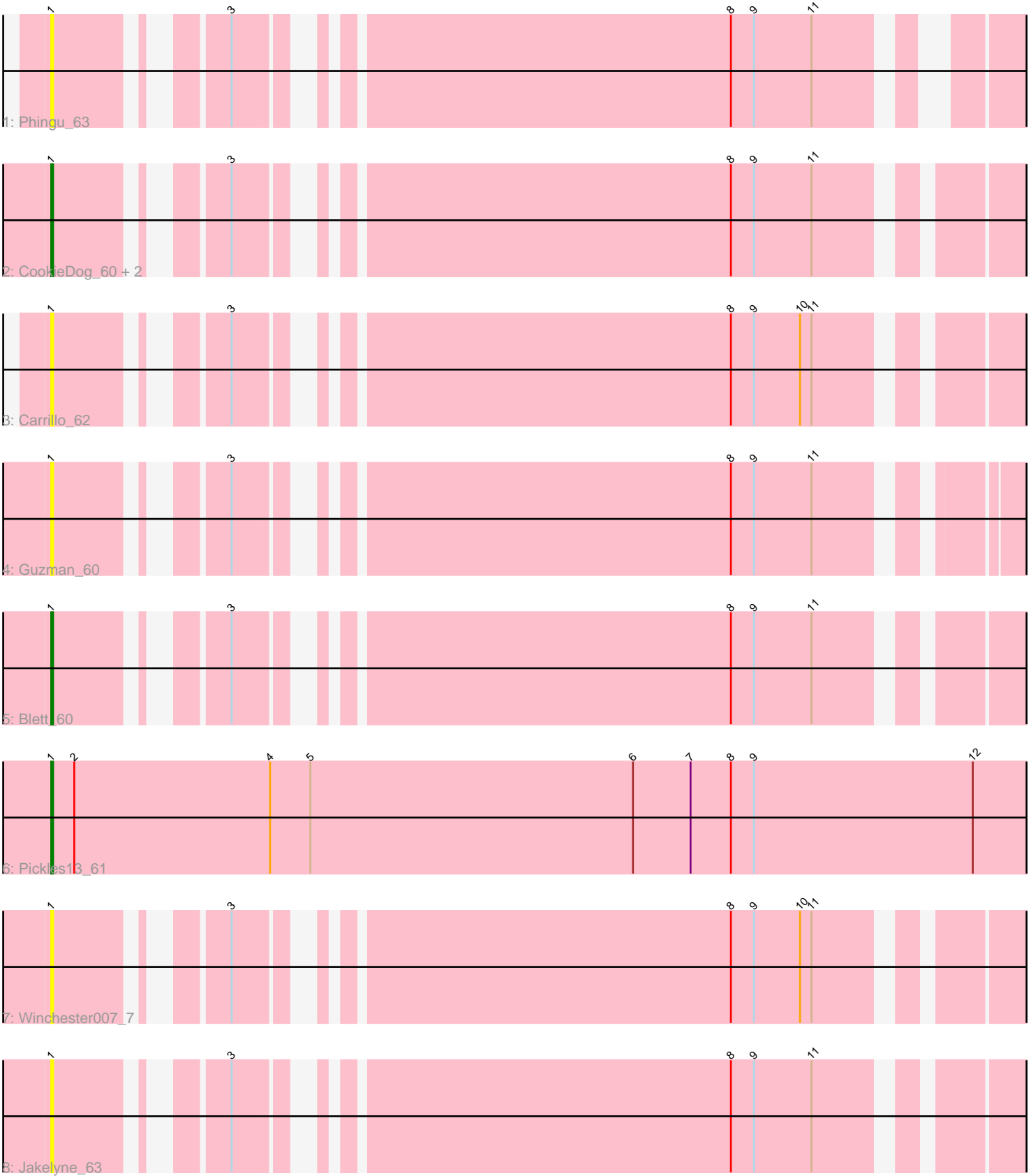


Zoomed Pham 276801



Note: Tracks are now grouped by subcluster and scaled. Switching in subcluster is indicated by changes in track color. Track scale is now set by default to display the region 30 bp upstream of start 1 to 30 bp downstream of the last possible start. If this default region is judged to be packed too tightly with annotated starts, the track will be further scaled to only show that region of the ORF with annotated starts. This action will be indicated by adding "Zoomed" to the title. For starts, yellow indicates the location of called starts comprised solely of Glimmer/GeneMark auto-annotations, green indicates the location of called starts with at least 1 manual gene annotation.

Pham 276801 Report

This analysis was run 02/07/26 on database version 634.

Pham number 276801 has 10 members, 5 are drafts.

Phages represented in each track:

- Track 1 : Phingu_63
- Track 2 : CookieDog_60, Losacky_62, Dropshot_60
- Track 3 : Carrillo_62
- Track 4 : Guzman_60
- Track 5 : Blett_60
- Track 6 : Pickles13_61
- Track 7 : Winchester007_7
- Track 8 : Jakelyne_63

Summary of Final Annotations (See graph section above for start numbers):

The start number called the most often in the published annotations is 1, it was called in 5 of the 5 non-draft genes in the pham.

Genes that call this "Most Annotated" start:

- Blett_60, Carrillo_62, CookieDog_60, Dropshot_60, Guzman_60, Jakelyne_63, Losacky_62, Phingu_63, Pickles13_61, Winchester007_7,

Genes that have the "Most Annotated" start but do not call it:

-

Genes that do not have the "Most Annotated" start:

-

Summary by start number:

Start 1:

- Found in 10 of 10 (100.0%) of genes in pham
- Manual Annotations of this start: 5 of 5
- Called 100.0% of time when present
- Phage (with cluster) where this start called: Blett_60 (GA), Carrillo_62 (GA), CookieDog_60 (GA), Dropshot_60 (GA), Guzman_60 (GA), Jakelyne_63 (GA), Losacky_62 (GA), Phingu_63 (GA), Pickles13_61 (GA), Winchester007_7 (GA),

Summary by clusters:

There is one cluster represented in this pham: GA

Info for manual annotations of cluster GA:

- Start number 1 was manually annotated 5 times for cluster GA.

Gene Information:

Gene: Blett_60 Start: 35553, Stop: 36365, Start Num: 1

Candidate Starts for Blett_60:

(Start: 1 @35553 has 5 MA's), (3, 35619), (8, 35847), (9, 35859), (11, 35889), (13, 36024), (17, 36183), (20, 36360),

Gene: Carrillo_62 Start: 35475, Stop: 36287, Start Num: 1

Candidate Starts for Carrillo_62:

(Start: 1 @35475 has 5 MA's), (3, 35541), (8, 35769), (9, 35781), (10, 35805), (11, 35811), (17, 36105), (20, 36282),

Gene: CookieDog_60 Start: 35482, Stop: 36294, Start Num: 1

Candidate Starts for CookieDog_60:

(Start: 1 @35482 has 5 MA's), (3, 35548), (8, 35776), (9, 35788), (11, 35818), (17, 36112),

Gene: Dropshot_60 Start: 35194, Stop: 36006, Start Num: 1

Candidate Starts for Dropshot_60:

(Start: 1 @35194 has 5 MA's), (3, 35260), (8, 35488), (9, 35500), (11, 35530), (17, 35824),

Gene: Guzman_60 Start: 35426, Stop: 36235, Start Num: 1

Candidate Starts for Guzman_60:

(Start: 1 @35426 has 5 MA's), (3, 35492), (8, 35720), (9, 35732), (11, 35762), (17, 36053), (20, 36230),

Gene: Jakelyne_63 Start: 35569, Stop: 36381, Start Num: 1

Candidate Starts for Jakelyne_63:

(Start: 1 @35569 has 5 MA's), (3, 35635), (8, 35863), (9, 35875), (11, 35905), (15, 36106), (17, 36199),

Gene: Losacky_62 Start: 35734, Stop: 36546, Start Num: 1

Candidate Starts for Losacky_62:

(Start: 1 @35734 has 5 MA's), (3, 35800), (8, 36028), (9, 36040), (11, 36070), (17, 36364),

Gene: Phingu_63 Start: 35588, Stop: 36391, Start Num: 1

Candidate Starts for Phingu_63:

(Start: 1 @35588 has 5 MA's), (3, 35654), (8, 35882), (9, 35894), (11, 35924), (13, 36050), (17, 36209), (18, 36272), (20, 36386),

Gene: Pickles13_61 Start: 36268, Stop: 37161, Start Num: 1

Candidate Starts for Pickles13_61:

(Start: 1 @36268 has 5 MA's), (2, 36280), (4, 36382), (5, 36403), (6, 36571), (7, 36601), (8, 36622), (9, 36634), (12, 36748), (14, 36841), (16, 36967), (19, 37084),

Gene: Winchester007_7 Start: 2630, Stop: 3442, Start Num: 1

Candidate Starts for Winchester007_7:

(Start: 1 @2630 has 5 MA's), (3, 2696), (8, 2924), (9, 2936), (10, 2960), (11, 2966), (17, 3260), (20, 3437),