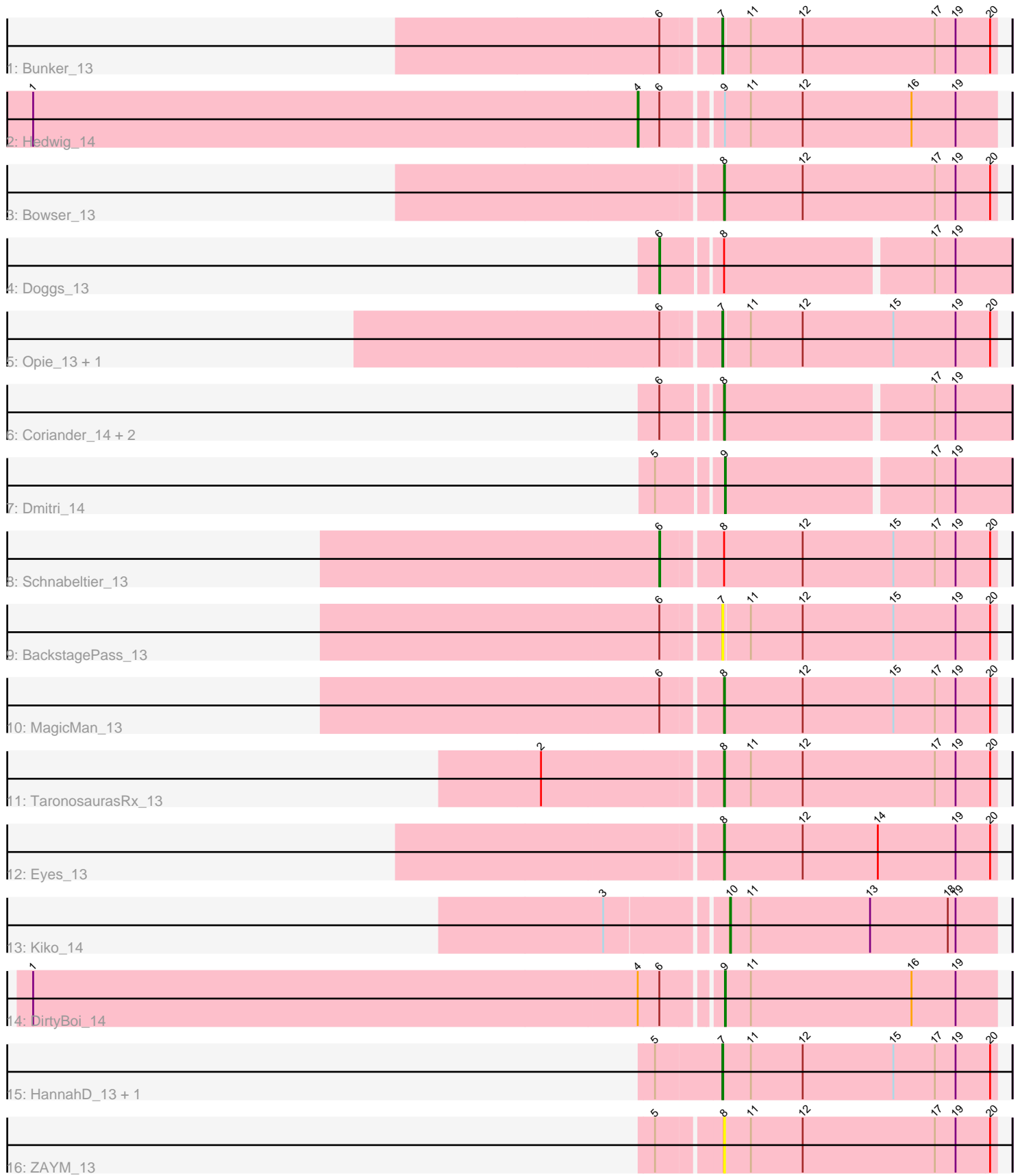


Pham 278618



Note: Tracks are now grouped by subcluster and scaled. Switching in subcluster is indicated by changes in track color. Track scale is now set by default to display the region 30 bp upstream of start 1 to 30 bp downstream of the last possible start. If this default region is judged to be packed too tightly with annotated starts, the track will be further scaled to only show that region of the ORF with annotated starts. This action will be indicated by adding "Zoomed" to the title. For starts, yellow indicates the location of called starts comprised solely of Glimmer/GeneMark auto-annotations, green indicates the location of called starts with at least 1 manual gene annotation.

Pham 278618 Report

This analysis was run 02/07/26 on database version 634.

Pham number 278618 has 20 members, 3 are drafts.

Phages represented in each track:

- Track 1 : Bunker_13
- Track 2 : Hedwig_14
- Track 3 : Bowser_13
- Track 4 : Doggs_13
- Track 5 : Opie_13, BBQValindra_13
- Track 6 : Coriander_14, RayTheFireFly_14, Moonflower_14
- Track 7 : Dmitri_14
- Track 8 : Schnabeltier_13
- Track 9 : BackstagePass_13
- Track 10 : MagicMan_13
- Track 11 : TaronosaurusRx_13
- Track 12 : Eyes_13
- Track 13 : Kiko_14
- Track 14 : DirtyBoi_14
- Track 15 : HannahD_13, GEazy_13
- Track 16 : ZAYM_13

Summary of Final Annotations (See graph section above for start numbers):

The start number called the most often in the published annotations is 8, it was called in 6 of the 17 non-draft genes in the pham.

Genes that call this "Most Annotated" start:

- Bowser_13, Coriander_14, Eyes_13, MagicMan_13, Moonflower_14, RayTheFireFly_14, TaronosaurusRx_13, ZAYM_13,

Genes that have the "Most Annotated" start but do not call it:

- Doggs_13, Schnabeltier_13,

Genes that do not have the "Most Annotated" start:

- BBQValindra_13, BackstagePass_13, Bunker_13, DirtyBoi_14, Dmitri_14, GEazy_13, HannahD_13, Hedwig_14, Kiko_14, Opie_13,

Summary by start number:

Start 4:

- Found in 2 of 20 (10.0%) of genes in pham
- Manual Annotations of this start: 1 of 17
- Called 50.0% of time when present
- Phage (with cluster) where this start called: Hedwig_14 (DB),

Start 6:

- Found in 12 of 20 (60.0%) of genes in pham
- Manual Annotations of this start: 2 of 17
- Called 16.7% of time when present
- Phage (with cluster) where this start called: Doggs_13 (DB), Schnabeltier_13 (DB),

Start 7:

- Found in 6 of 20 (30.0%) of genes in pham
- Manual Annotations of this start: 5 of 17
- Called 100.0% of time when present
- Phage (with cluster) where this start called: BBQValindra_13 (DB), BackstagePass_13 (DB), Bunker_13 (DB), GEazy_13 (DB), HannahD_13 (DB), Opie_13 (DB),

Start 8:

- Found in 10 of 20 (50.0%) of genes in pham
- Manual Annotations of this start: 6 of 17
- Called 80.0% of time when present
- Phage (with cluster) where this start called: Bowser_13 (DB), Coriander_14 (DB), Eyes_13 (DB), MagicMan_13 (DB), Moonflower_14 (DB), RayTheFireFly_14 (DB), TaronosaurusRx_13 (DB), ZAYM_13 (DB),

Start 9:

- Found in 3 of 20 (15.0%) of genes in pham
- Manual Annotations of this start: 2 of 17
- Called 66.7% of time when present
- Phage (with cluster) where this start called: DirtyBoi_14 (DB), Dmitri_14 (DB),

Start 10:

- Found in 1 of 20 (5.0%) of genes in pham
- Manual Annotations of this start: 1 of 17
- Called 100.0% of time when present
- Phage (with cluster) where this start called: Kiko_14 (DB),

Summary by clusters:

There is one cluster represented in this pham: DB

Info for manual annotations of cluster DB:

- Start number 4 was manually annotated 1 time for cluster DB.
- Start number 6 was manually annotated 2 times for cluster DB.
- Start number 7 was manually annotated 5 times for cluster DB.
- Start number 8 was manually annotated 6 times for cluster DB.
- Start number 9 was manually annotated 2 times for cluster DB.
- Start number 10 was manually annotated 1 time for cluster DB.

Gene Information:

Gene: BBQValindra_13 Start: 8921, Stop: 9232, Start Num: 7

Candidate Starts for BBQValindra_13:

(Start: 6 @8858 has 2 MA's), (Start: 7 @8921 has 5 MA's), (11, 8951), (12, 9011), (15, 9116), (19, 9188), (20, 9227),

Gene: BackstagePass_13 Start: 8898, Stop: 9209, Start Num: 7

Candidate Starts for BackstagePass_13:

(Start: 6 @8835 has 2 MA's), (Start: 7 @8898 has 5 MA's), (11, 8928), (12, 8988), (15, 9093), (19, 9165), (20, 9204),

Gene: Bowser_13 Start: 8923, Stop: 9234, Start Num: 8

Candidate Starts for Bowser_13:

(Start: 8 @8923 has 6 MA's), (12, 9013), (17, 9166), (19, 9190), (20, 9229),

Gene: Bunker_13 Start: 8921, Stop: 9232, Start Num: 7

Candidate Starts for Bunker_13:

(Start: 6 @8858 has 2 MA's), (Start: 7 @8921 has 5 MA's), (11, 8951), (12, 9011), (17, 9164), (19, 9188), (20, 9227),

Gene: Coriander_14 Start: 9316, Stop: 9636, Start Num: 8

Candidate Starts for Coriander_14:

(Start: 6 @9253 has 2 MA's), (Start: 8 @9316 has 6 MA's), (17, 9547), (19, 9571),

Gene: DirtyBoi_14 Start: 9265, Stop: 9579, Start Num: 9

Candidate Starts for DirtyBoi_14:

(1, 8488), (Start: 4 @9184 has 1 MA's), (Start: 6 @9208 has 2 MA's), (Start: 9 @9265 has 2 MA's), (11, 9295), (16, 9481), (19, 9532),

Gene: Dmitri_14 Start: 9298, Stop: 9618, Start Num: 9

Candidate Starts for Dmitri_14:

(5, 9229), (Start: 9 @9298 has 2 MA's), (17, 9529), (19, 9553),

Gene: Doggs_13 Start: 8950, Stop: 9333, Start Num: 6

Candidate Starts for Doggs_13:

(Start: 6 @8950 has 2 MA's), (Start: 8 @9013 has 6 MA's), (17, 9244), (19, 9268),

Gene: Eyes_13 Start: 8931, Stop: 9242, Start Num: 8

Candidate Starts for Eyes_13:

(Start: 8 @8931 has 6 MA's), (12, 9021), (14, 9108), (19, 9198), (20, 9237),

Gene: GEazy_13 Start: 8937, Stop: 9251, Start Num: 7

Candidate Starts for GEazy_13:

(5, 8862), (Start: 7 @8937 has 5 MA's), (11, 8970), (12, 9030), (15, 9135), (17, 9183), (19, 9207), (20, 9246),

Gene: HannahD_13 Start: 8937, Stop: 9251, Start Num: 7

Candidate Starts for HannahD_13:

(5, 8862), (Start: 7 @8937 has 5 MA's), (11, 8970), (12, 9030), (15, 9135), (17, 9183), (19, 9207), (20, 9246),

Gene: Hedwig_14 Start: 9184, Stop: 9579, Start Num: 4

Candidate Starts for Hedwig_14:

(1, 8488), (Start: 4 @9184 has 1 MA's), (Start: 6 @9208 has 2 MA's), (Start: 9 @9265 has 2 MA's), (11, 9295), (12, 9355), (16, 9481), (19, 9532),

Gene: Kiko_14 Start: 9124, Stop: 9432, Start Num: 10

Candidate Starts for Kiko_14:

(3, 8995), (Start: 10 @9124 has 1 MA's), (11, 9148), (13, 9286), (18, 9376), (19, 9385),

Gene: MagicMan_13 Start: 9261, Stop: 9572, Start Num: 8

Candidate Starts for MagicMan_13:

(Start: 6 @9195 has 2 MA's), (Start: 8 @9261 has 6 MA's), (12, 9351), (15, 9456), (17, 9504), (19, 9528), (20, 9567),

Gene: Moonflower_14 Start: 9321, Stop: 9641, Start Num: 8

Candidate Starts for Moonflower_14:

(Start: 6 @9258 has 2 MA's), (Start: 8 @9321 has 6 MA's), (17, 9552), (19, 9576),

Gene: Opie_13 Start: 9275, Stop: 9586, Start Num: 7

Candidate Starts for Opie_13:

(Start: 6 @9212 has 2 MA's), (Start: 7 @9275 has 5 MA's), (11, 9305), (12, 9365), (15, 9470), (19, 9542), (20, 9581),

Gene: RayTheFireFly_14 Start: 9322, Stop: 9642, Start Num: 8

Candidate Starts for RayTheFireFly_14:

(Start: 6 @9259 has 2 MA's), (Start: 8 @9322 has 6 MA's), (17, 9553), (19, 9577),

Gene: Schnabeltier_13 Start: 9196, Stop: 9573, Start Num: 6

Candidate Starts for Schnabeltier_13:

(Start: 6 @9196 has 2 MA's), (Start: 8 @9262 has 6 MA's), (12, 9352), (15, 9457), (17, 9505), (19, 9529), (20, 9568),

Gene: TaronosaurusRx_13 Start: 9274, Stop: 9585, Start Num: 8

Candidate Starts for TaronosaurusRx_13:

(2, 9076), (Start: 8 @9274 has 6 MA's), (11, 9304), (12, 9364), (17, 9517), (19, 9541), (20, 9580),

Gene: ZAYM_13 Start: 9266, Stop: 9577, Start Num: 8

Candidate Starts for ZAYM_13:

(5, 9197), (Start: 8 @9266 has 6 MA's), (11, 9296), (12, 9356), (17, 9509), (19, 9533), (20, 9572),