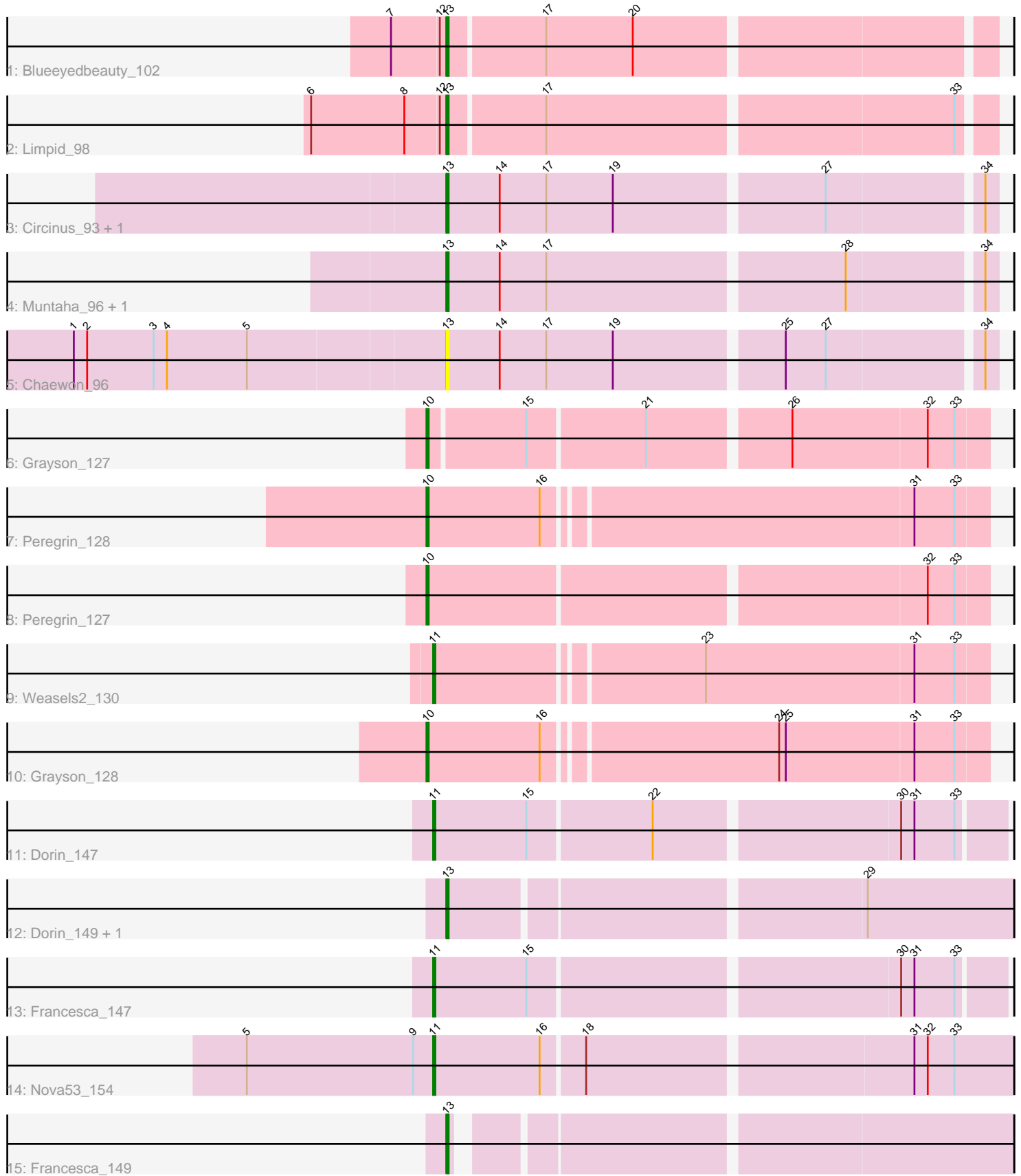


# Pham 278642



Note: Tracks are now grouped by subcluster and scaled. Switching in subcluster is indicated by changes in track color. Track scale is now set by default to display the region 30 bp upstream of start 1 to 30 bp downstream of the last possible start. If this default region is judged to be packed too tightly with annotated starts, the track will be further scaled to only show that region of the ORF with annotated starts. This action will be indicated by adding "Zoomed" to the title. For starts, yellow indicates the location of called starts comprised solely of Glimmer/GeneMark auto-annotations, green indicates the location of called starts with at least 1 manual gene annotation.

## Pham 278642 Report

This analysis was run 02/07/26 on database version 634.

Pham number 278642 has 18 members, 1 are drafts.

Phages represented in each track:

- Track 1 : Blueeyedbeauty\_102
- Track 2 : Limpid\_98
- Track 3 : Circinus\_93, BillNye\_92
- Track 4 : Muntaha\_96, Wakanda\_94
- Track 5 : Chaewon\_96
- Track 6 : Grayson\_127
- Track 7 : Peregrin\_128
- Track 8 : Peregrin\_127
- Track 9 : Weasels2\_130
- Track 10 : Grayson\_128
- Track 11 : Dorin\_147
- Track 12 : Dorin\_149, Nova53\_156
- Track 13 : Francesca\_147
- Track 14 : Nova53\_154
- Track 15 : Francesca\_149

### ***Summary of Final Annotations (See graph section above for start numbers):***

The start number called the most often in the published annotations is 13, it was called in 9 of the 17 non-draft genes in the pham.

Genes that call this "Most Annotated" start:

- BillNye\_92, Blueeyedbeauty\_102, Chaewon\_96, Circinus\_93, Dorin\_149, Francesca\_149, Limpid\_98, Muntaha\_96, Nova53\_156, Wakanda\_94,

Genes that have the "Most Annotated" start but do not call it:

- 

Genes that do not have the "Most Annotated" start:

- Dorin\_147, Francesca\_147, Grayson\_127, Grayson\_128, Nova53\_154, Peregrin\_127, Peregrin\_128, Weasels2\_130,

### **Summary by start number:**

Start 10:

- Found in 4 of 18 ( 22.2% ) of genes in pham
- Manual Annotations of this start: 4 of 17
- Called 100.0% of time when present
- Phage (with cluster) where this start called: Grayson\_127 (CB), Grayson\_128 (CB), Peregrin\_127 (CB), Peregrin\_128 (CB),

Start 11:

- Found in 4 of 18 ( 22.2% ) of genes in pham
- Manual Annotations of this start: 4 of 17
- Called 100.0% of time when present
- Phage (with cluster) where this start called: Dorin\_147 (CG), Francesca\_147 (CG), Nova53\_154 (CG), Weasels2\_130 (CB),

Start 13:

- Found in 10 of 18 ( 55.6% ) of genes in pham
- Manual Annotations of this start: 9 of 17
- Called 100.0% of time when present
- Phage (with cluster) where this start called: BillNye\_92 (BK2), Blueeyedbeauty\_102 (BK1), Chaewon\_96 (BK2), Circinus\_93 (BK2), Dorin\_149 (CG), Francesca\_149 (CG), Limpid\_98 (BK1), Muntaha\_96 (BK2), Nova53\_156 (CG), Wakanda\_94 (BK2),

### **Summary by clusters:**

There are 4 clusters represented in this pham: CB, CG, BK1, BK2,

Info for manual annotations of cluster BK1:

- Start number 13 was manually annotated 2 times for cluster BK1.

Info for manual annotations of cluster BK2:

- Start number 13 was manually annotated 4 times for cluster BK2.

Info for manual annotations of cluster CB:

- Start number 10 was manually annotated 4 times for cluster CB.
- Start number 11 was manually annotated 1 time for cluster CB.

Info for manual annotations of cluster CG:

- Start number 11 was manually annotated 3 times for cluster CG.
- Start number 13 was manually annotated 3 times for cluster CG.

### **Gene Information:**

Gene: BillNye\_92 Start: 68857, Stop: 69093, Start Num: 13

Candidate Starts for BillNye\_92:

(Start: 13 @68857 has 9 MA's), (14, 68881), (17, 68902), (19, 68932), (27, 69022), (34, 69088),

Gene: Blueeyedbeauty\_102 Start: 67743, Stop: 67976, Start Num: 13

Candidate Starts for Blueeyedbeauty\_102:

(7, 67719), (12, 67740), (Start: 13 @67743 has 9 MA's), (17, 67785), (20, 67824),

Gene: Chaewon\_96 Start: 68701, Stop: 68937, Start Num: 13

Candidate Starts for Chaewon\_96:

(1, 68536), (2, 68542), (3, 68572), (4, 68578), (5, 68614), (Start: 13 @68701 has 9 MA's), (14, 68725), (17, 68746), (19, 68776), (25, 68848), (27, 68866), (34, 68932),

Gene: Circinus\_93 Start: 68844, Stop: 69080, Start Num: 13

Candidate Starts for Circinus\_93:

(Start: 13 @68844 has 9 MA's), (14, 68868), (17, 68889), (19, 68919), (27, 69009), (34, 69075),

Gene: Dorin\_147 Start: 88197, Stop: 88442, Start Num: 11

Candidate Starts for Dorin\_147:

(Start: 11 @88197 has 4 MA's), (15, 88239), (22, 88293), (30, 88398), (31, 88404), (33, 88422),

Gene: Dorin\_149 Start: 88606, Stop: 88848, Start Num: 13

Candidate Starts for Dorin\_149:

(Start: 13 @88606 has 9 MA's), (29, 88783),

Gene: Francesca\_147 Start: 88894, Stop: 89139, Start Num: 11

Candidate Starts for Francesca\_147:

(Start: 11 @88894 has 4 MA's), (15, 88936), (30, 89095), (31, 89101), (33, 89119),

Gene: Francesca\_149 Start: 89303, Stop: 89536, Start Num: 13

Candidate Starts for Francesca\_149:

(Start: 13 @89303 has 9 MA's),

Gene: Grayson\_127 Start: 76957, Stop: 77196, Start Num: 10

Candidate Starts for Grayson\_127:

(Start: 10 @76957 has 4 MA's), (15, 76999), (21, 77050), (26, 77110), (32, 77170), (33, 77182),

Gene: Grayson\_128 Start: 77193, Stop: 77435, Start Num: 10

Candidate Starts for Grayson\_128:

(Start: 10 @77193 has 4 MA's), (16, 77244), (24, 77343), (25, 77346), (31, 77403), (33, 77421),

Gene: Limpid\_98 Start: 67780, Stop: 68013, Start Num: 13

Candidate Starts for Limpid\_98:

(6, 67720), (8, 67762), (12, 67777), (Start: 13 @67780 has 9 MA's), (17, 67822), (33, 67999),

Gene: Muntaha\_96 Start: 67690, Stop: 67926, Start Num: 13

Candidate Starts for Muntaha\_96:

(Start: 13 @67690 has 9 MA's), (14, 67714), (17, 67735), (28, 67864), (34, 67921),

Gene: Nova53\_156 Start: 90976, Stop: 91218, Start Num: 13

Candidate Starts for Nova53\_156:

(Start: 13 @90976 has 9 MA's), (29, 91153),

Gene: Nova53\_154 Start: 90559, Stop: 90810, Start Num: 11

Candidate Starts for Nova53\_154:

(5, 90475), (9, 90550), (Start: 11 @90559 has 4 MA's), (16, 90607), (18, 90625), (31, 90766), (32, 90772), (33, 90784),

Gene: Peregrin\_128 Start: 77403, Stop: 77645, Start Num: 10

Candidate Starts for Peregrin\_128:

(Start: 10 @77403 has 4 MA's), (16, 77454), (31, 77613), (33, 77631),

Gene: Peregrin\_127 Start: 77164, Stop: 77406, Start Num: 10

Candidate Starts for Peregrin\_127:

(Start: 10 @77164 has 4 MA's), (32, 77380), (33, 77392),

Gene: Wakanda\_94 Start: 67532, Stop: 67768, Start Num: 13

Candidate Starts for Wakanda\_94:

(Start: 13 @67532 has 9 MA's), (14, 67556), (17, 67577), (28, 67706), (34, 67763),

Gene: Weasels2\_130 Start: 78415, Stop: 78654, Start Num: 11

Candidate Starts for Weasels2\_130:

(Start: 11 @78415 has 4 MA's), (23, 78529), (31, 78622), (33, 78640),