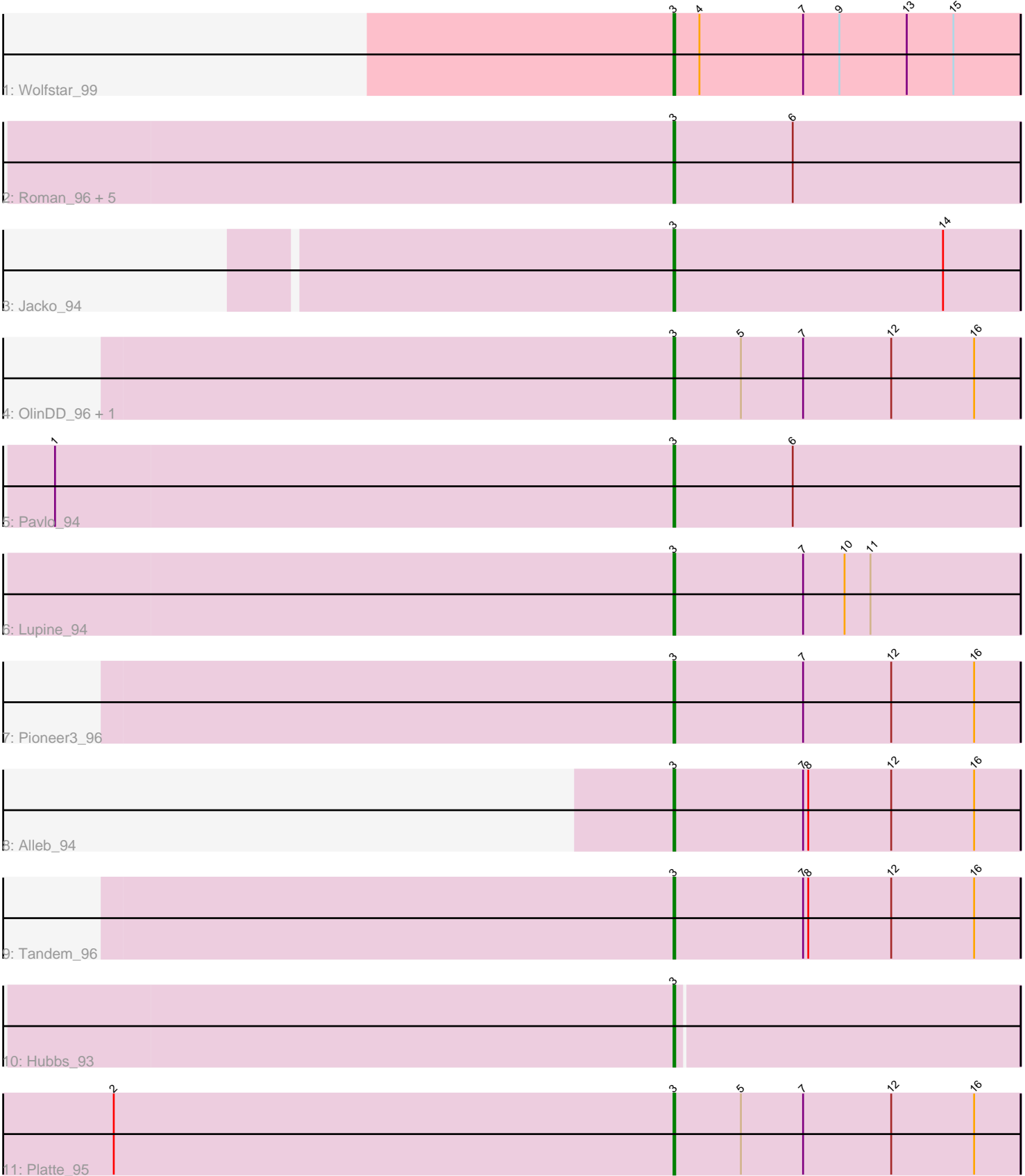


Pham 278664



Note: Tracks are now grouped by subcluster and scaled. Switching in subcluster is indicated by changes in track color. Track scale is now set by default to display the region 30 bp upstream of start 1 to 30 bp downstream of the last possible start. If this default region is judged to be packed too tightly with annotated starts, the track will be further scaled to only show that region of the ORF with annotated starts. This action will be indicated by adding "Zoomed" to the title. For starts, yellow indicates the location of called starts comprised solely of Glimmer/GeneMark auto-annotations, green indicates the location of called starts with at least 1 manual gene annotation.

Pham 278664 Report

This analysis was run 02/07/26 on database version 634.

Pham number 278664 has 17 members, 3 are drafts.

Phages represented in each track:

- Track 1 : Wolfstar_99
- Track 2 : Roman_96, DejaVu_95, Uterion_98, Solimine_96, PhillyPhilly_92, Saradis_96
- Track 3 : Jacko_94
- Track 4 : OlinDD_96, Hortus1_96
- Track 5 : Pavlo_94
- Track 6 : Lupine_94
- Track 7 : Pioneer3_96
- Track 8 : Alleb_94
- Track 9 : Tandem_96
- Track 10 : Hubbs_93
- Track 11 : Platte_95

Summary of Final Annotations (See graph section above for start numbers):

The start number called the most often in the published annotations is 3, it was called in 14 of the 14 non-draft genes in the pham.

Genes that call this "Most Annotated" start:

- Alleb_94, DejaVu_95, Hortus1_96, Hubbs_93, Jacko_94, Lupine_94, OlinDD_96, Pavlo_94, PhillyPhilly_92, Pioneer3_96, Platte_95, Roman_96, Saradis_96, Solimine_96, Tandem_96, Uterion_98, Wolfstar_99,

Genes that have the "Most Annotated" start but do not call it:

-

Genes that do not have the "Most Annotated" start:

-

Summary by start number:

Start 3:

- Found in 17 of 17 (100.0%) of genes in pham
- Manual Annotations of this start: 14 of 14

- Called 100.0% of time when present
- Phage (with cluster) where this start called: Alleb_94 (ED1), DejaVu_95 (ED1), Hortus1_96 (ED1), Hubbs_93 (ED1), Jacko_94 (ED1), Lupine_94 (ED1), OlinDD_96 (ED1), Pavlo_94 (ED1), PhillyPhilly_92 (ED1), Pioneer3_96 (ED1), Platte_95 (ED1), Roman_96 (ED1), Saradis_96 (ED1), Solimine_96 (ED1), Tandem_96 (ED1), Uterion_98 (ED1), Wolfstar_99 (ED),

Summary by clusters:

There are 2 clusters represented in this pham: ED, ED1,

Info for manual annotations of cluster ED:

- Start number 3 was manually annotated 1 time for cluster ED.

Info for manual annotations of cluster ED1:

- Start number 3 was manually annotated 13 times for cluster ED1.

Gene Information:

Gene: Alleb_94 Start: 53758, Stop: 53558, Start Num: 3

Candidate Starts for Alleb_94:

(Start: 3 @53758 has 14 MA's), (7, 53683), (8, 53680), (12, 53632), (16, 53584),

Gene: DejaVu_95 Start: 52986, Stop: 52786, Start Num: 3

Candidate Starts for DejaVu_95:

(Start: 3 @52986 has 14 MA's), (6, 52917),

Gene: Hortus1_96 Start: 54333, Stop: 54133, Start Num: 3

Candidate Starts for Hortus1_96:

(Start: 3 @54333 has 14 MA's), (5, 54294), (7, 54258), (12, 54207), (16, 54159),

Gene: Hubbs_93 Start: 53032, Stop: 52835, Start Num: 3

Candidate Starts for Hubbs_93:

(Start: 3 @53032 has 14 MA's),

Gene: Jacko_94 Start: 52275, Stop: 52075, Start Num: 3

Candidate Starts for Jacko_94:

(Start: 3 @52275 has 14 MA's), (14, 52119),

Gene: Lupine_94 Start: 53045, Stop: 52845, Start Num: 3

Candidate Starts for Lupine_94:

(Start: 3 @53045 has 14 MA's), (7, 52970), (10, 52946), (11, 52931),

Gene: OlinDD_96 Start: 54338, Stop: 54138, Start Num: 3

Candidate Starts for OlinDD_96:

(Start: 3 @54338 has 14 MA's), (5, 54299), (7, 54263), (12, 54212), (16, 54164),

Gene: Pavlo_94 Start: 53130, Stop: 52930, Start Num: 3

Candidate Starts for Pavlo_94:

(1, 53487), (Start: 3 @53130 has 14 MA's), (6, 53061),

Gene: PhillyPhilly_92 Start: 52595, Stop: 52395, Start Num: 3

Candidate Starts for PhillyPhilly_92:

(Start: 3 @52595 has 14 MA's), (6, 52526),

Gene: Pioneer3_96 Start: 54136, Stop: 53936, Start Num: 3

Candidate Starts for Pioneer3_96:

(Start: 3 @54136 has 14 MA's), (7, 54061), (12, 54010), (16, 53962),

Gene: Platte_95 Start: 53904, Stop: 53704, Start Num: 3

Candidate Starts for Platte_95:

(2, 54228), (Start: 3 @53904 has 14 MA's), (5, 53865), (7, 53829), (12, 53778), (16, 53730),

Gene: Roman_96 Start: 53646, Stop: 53446, Start Num: 3

Candidate Starts for Roman_96:

(Start: 3 @53646 has 14 MA's), (6, 53577),

Gene: Saradis_96 Start: 52607, Stop: 52407, Start Num: 3

Candidate Starts for Saradis_96:

(Start: 3 @52607 has 14 MA's), (6, 52538),

Gene: Solimine_96 Start: 53503, Stop: 53303, Start Num: 3

Candidate Starts for Solimine_96:

(Start: 3 @53503 has 14 MA's), (6, 53434),

Gene: Tandem_96 Start: 54216, Stop: 54016, Start Num: 3

Candidate Starts for Tandem_96:

(Start: 3 @54216 has 14 MA's), (7, 54141), (8, 54138), (12, 54090), (16, 54042),

Gene: Uterion_98 Start: 53019, Stop: 52819, Start Num: 3

Candidate Starts for Uterion_98:

(Start: 3 @53019 has 14 MA's), (6, 52950),

Gene: Wolfstar_99 Start: 55037, Stop: 54837, Start Num: 3

Candidate Starts for Wolfstar_99:

(Start: 3 @55037 has 14 MA's), (4, 55022), (7, 54962), (9, 54941), (13, 54902), (15, 54875),