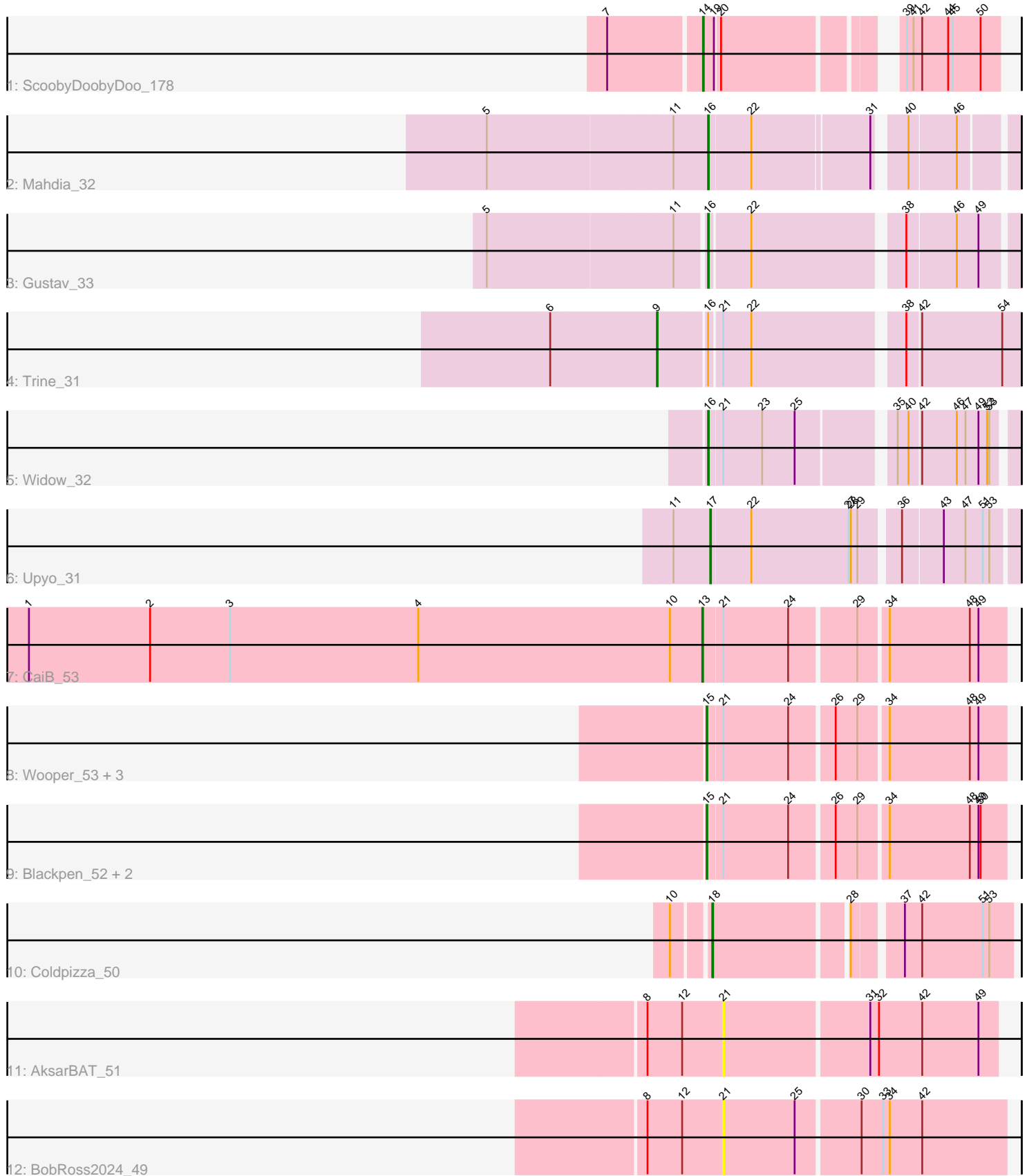


Pham 278672



Note: Tracks are now grouped by subcluster and scaled. Switching in subcluster is indicated by changes in track color. Track scale is now set by default to display the region 30 bp upstream of start 1 to 30 bp downstream of the last possible start. If this default region is judged to be packed too tightly with annotated starts, the track will be further scaled to only show that region of the ORF with annotated starts. This action will be indicated by adding "Zoomed" to the title. For starts, yellow indicates the location of called starts comprised solely of Glimmer/GeneMark auto-annotations, green indicates the location of called starts with at least 1 manual gene annotation.

Pham 278672 Report

This analysis was run 02/07/26 on database version 634.

Pham number 278672 has 17 members, 5 are drafts.

Phages represented in each track:

- Track 1 : ScoobyDoobyDoo_178
- Track 2 : Mahdia_32
- Track 3 : Gustav_33
- Track 4 : Trine_31
- Track 5 : Widow_32
- Track 6 : Upyo_31
- Track 7 : CaiB_53
- Track 8 : Wooper_53, Yeshua_53, MossRose_52, TraderJ_53
- Track 9 : Blackpen_52, CloverMinnie_52, FelixTres_52
- Track 10 : Coldpizza_50
- Track 11 : AksarBAT_51
- Track 12 : BobRoss2024_49

Summary of Final Annotations (See graph section above for start numbers):

The start number called the most often in the published annotations is 15, it was called in 4 of the 12 non-draft genes in the pham.

Genes that call this "Most Annotated" start:

- Blackpen_52, CloverMinnie_52, FelixTres_52, MossRose_52, TraderJ_53, Wooper_53, Yeshua_53,

Genes that have the "Most Annotated" start but do not call it:

-

Genes that do not have the "Most Annotated" start:

- AksarBAT_51, BobRoss2024_49, CaiB_53, Coldpizza_50, Gustav_33, Mahdia_32, ScoobyDoobyDoo_178, Trine_31, Upyo_31, Widow_32,

Summary by start number:

Start 9:

- Found in 1 of 17 (5.9%) of genes in pham
- Manual Annotations of this start: 1 of 12

- Called 100.0% of time when present
- Phage (with cluster) where this start called: Trine_31 (CD),

Start 13:

- Found in 1 of 17 (5.9%) of genes in pham
- Manual Annotations of this start: 1 of 12
- Called 100.0% of time when present
- Phage (with cluster) where this start called: CaiB_53 (DR),

Start 14:

- Found in 1 of 17 (5.9%) of genes in pham
- Manual Annotations of this start: 1 of 12
- Called 100.0% of time when present
- Phage (with cluster) where this start called: ScoobyDoobyDoo_178 (C2),

Start 15:

- Found in 7 of 17 (41.2%) of genes in pham
- Manual Annotations of this start: 4 of 12
- Called 100.0% of time when present
- Phage (with cluster) where this start called: Blackpen_52 (DR), CloverMinnie_52 (DR), FelixTres_52 (DR), MossRose_52 (DR), TraderJ_53 (DR), Wooper_53 (DR), Yeshua_53 (DR),

Start 16:

- Found in 4 of 17 (23.5%) of genes in pham
- Manual Annotations of this start: 3 of 12
- Called 75.0% of time when present
- Phage (with cluster) where this start called: Gustav_33 (CD), Mahdia_32 (CD), Widow_32 (CD),

Start 17:

- Found in 1 of 17 (5.9%) of genes in pham
- Manual Annotations of this start: 1 of 12
- Called 100.0% of time when present
- Phage (with cluster) where this start called: Upyo_31 (CD),

Start 18:

- Found in 1 of 17 (5.9%) of genes in pham
- Manual Annotations of this start: 1 of 12
- Called 100.0% of time when present
- Phage (with cluster) where this start called: Coldpizza_50 (DR),

Start 21:

- Found in 12 of 17 (70.6%) of genes in pham
- No Manual Annotations of this start.
- Called 16.7% of time when present
- Phage (with cluster) where this start called: AksarBAT_51 (DR), BobRoss2024_49 (DR),

Summary by clusters:

There are 3 clusters represented in this pham: C2, DR, CD,

Info for manual annotations of cluster C2:

- Start number 14 was manually annotated 1 time for cluster C2.

Info for manual annotations of cluster CD:

- Start number 9 was manually annotated 1 time for cluster CD.
- Start number 16 was manually annotated 3 times for cluster CD.
- Start number 17 was manually annotated 1 time for cluster CD.

Info for manual annotations of cluster DR:

- Start number 13 was manually annotated 1 time for cluster DR.
- Start number 15 was manually annotated 4 times for cluster DR.
- Start number 18 was manually annotated 1 time for cluster DR.

Gene Information:

Gene: AksarBAT_51 Start: 44810, Stop: 44442, Start Num: 21

Candidate Starts for AksarBAT_51:

(8, 44915), (12, 44867), (21, 44810), (31, 44615), (32, 44606), (42, 44546), (49, 44468),

Gene: Blackpen_52 Start: 45239, Stop: 44847, Start Num: 15

Candidate Starts for Blackpen_52:

(Start: 15 @45239 has 4 MA's), (21, 45221), (24, 45131), (26, 45074), (29, 45044), (34, 45008), (48, 44897), (49, 44885), (50, 44882),

Gene: BobRoss2024_49 Start: 43873, Stop: 43490, Start Num: 21

Candidate Starts for BobRoss2024_49:

(8, 43978), (12, 43930), (21, 43873), (25, 43774), (30, 43690), (33, 43660), (34, 43651), (42, 43606),

Gene: CaiB_53 Start: 46692, Stop: 46294, Start Num: 13

Candidate Starts for CaiB_53:

(1, 47625), (2, 47457), (3, 47346), (4, 47085), (10, 46737), (Start: 13 @46692 has 1 MA's), (21, 46668), (24, 46578), (29, 46491), (34, 46455), (48, 46344), (49, 46332),

Gene: CloverMinnie_52 Start: 45747, Stop: 45355, Start Num: 15

Candidate Starts for CloverMinnie_52:

(Start: 15 @45747 has 4 MA's), (21, 45729), (24, 45639), (26, 45582), (29, 45552), (34, 45516), (48, 45405), (49, 45393), (50, 45390),

Gene: Coldpizza_50 Start: 46742, Stop: 46362, Start Num: 18

Candidate Starts for Coldpizza_50:

(10, 46784), (Start: 18 @46742 has 1 MA's), (28, 46568), (37, 46511), (42, 46487), (51, 46403), (53, 46394),

Gene: FelixTres_52 Start: 45785, Stop: 45393, Start Num: 15

Candidate Starts for FelixTres_52:

(Start: 15 @45785 has 4 MA's), (21, 45767), (24, 45677), (26, 45620), (29, 45590), (34, 45554), (48, 45443), (49, 45431), (50, 45428),

Gene: Gustav_33 Start: 25688, Stop: 25296, Start Num: 16

Candidate Starts for Gustav_33:

(5, 25976), (11, 25727), (Start: 16 @25688 has 3 MA's), (22, 25634), (38, 25439), (46, 25373), (49, 25343),

Gene: Mahdia_32 Start: 24869, Stop: 24492, Start Num: 16

Candidate Starts for Mahdia_32:

(5, 25166), (11, 24917), (Start: 16 @24869 has 3 MA's), (22, 24812), (31, 24656), (40, 24623), (46, 24560),

Gene: MossRose_52 Start: 45804, Stop: 45412, Start Num: 15

Candidate Starts for MossRose_52:

(Start: 15 @45804 has 4 MA's), (21, 45786), (24, 45696), (26, 45639), (29, 45609), (34, 45573), (48, 45462), (49, 45450),

Gene: ScoobyDoobyDoo_178 Start: 98579, Stop: 98932, Start Num: 14

Candidate Starts for ScoobyDoobyDoo_178:

(7, 98456), (Start: 14 @98579 has 1 MA's), (19, 98594), (20, 98600), (39, 98804), (41, 98813), (42, 98825), (44, 98861), (45, 98867), (50, 98906),

Gene: TraderJ_53 Start: 46127, Stop: 45735, Start Num: 15

Candidate Starts for TraderJ_53:

(Start: 15 @46127 has 4 MA's), (21, 46109), (24, 46019), (26, 45962), (29, 45932), (34, 45896), (48, 45785), (49, 45773),

Gene: Trine_31 Start: 25044, Stop: 24577, Start Num: 9

Candidate Starts for Trine_31:

(6, 25191), (Start: 9 @25044 has 1 MA's), (Start: 16 @24981 has 3 MA's), (21, 24966), (22, 24927), (38, 24732), (42, 24714), (54, 24603),

Gene: Upyo_31 Start: 25589, Stop: 25188, Start Num: 17

Candidate Starts for Upyo_31:

(11, 25640), (Start: 17 @25589 has 1 MA's), (22, 25535), (27, 25400), (28, 25397), (29, 25388), (36, 25340), (43, 25286), (47, 25256), (51, 25232), (53, 25223),

Gene: Widow_32 Start: 25169, Stop: 24783, Start Num: 16

Candidate Starts for Widow_32:

(Start: 16 @25169 has 3 MA's), (21, 25151), (23, 25097), (25, 25052), (35, 24935), (40, 24920), (42, 24905), (46, 24857), (47, 24845), (49, 24827), (52, 24815), (53, 24812),

Gene: Wooper_53 Start: 46136, Stop: 45744, Start Num: 15

Candidate Starts for Wooper_53:

(Start: 15 @46136 has 4 MA's), (21, 46118), (24, 46028), (26, 45971), (29, 45941), (34, 45905), (48, 45794), (49, 45782),

Gene: Yeshua_53 Start: 46113, Stop: 45721, Start Num: 15

Candidate Starts for Yeshua_53:

(Start: 15 @46113 has 4 MA's), (21, 46095), (24, 46005), (26, 45948), (29, 45918), (34, 45882), (48, 45771), (49, 45759),