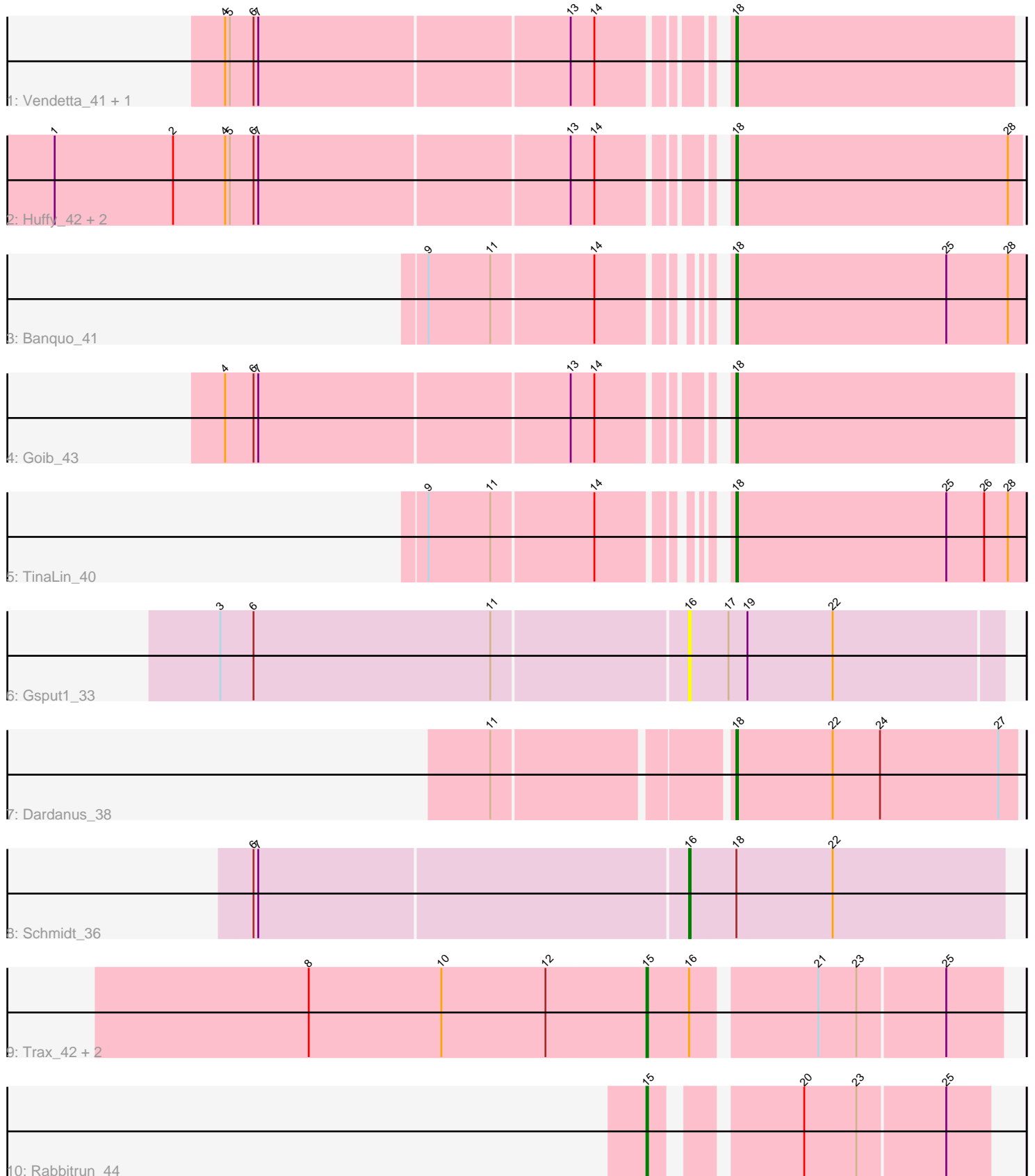


Pham 278706



Note: Tracks are now grouped by subcluster and scaled. Switching in subcluster is indicated by changes in track color. Track scale is now set by default to display the region 30 bp upstream of start 1 to 30 bp downstream of the last possible start. If this default region is judged to be packed too tightly with annotated starts, the track will be further scaled to only show that region of the ORF with annotated starts. This action will be indicated by adding "Zoomed" to the title. For starts, yellow indicates the location of called starts comprised solely of Glimmer/GeneMark auto-annotations, green indicates the location of called starts with at least 1 manual gene annotation.

Pham 278706 Report

This analysis was run 02/07/26 on database version 634.

Pham number 278706 has 15 members, 2 are drafts.

Phages represented in each track:

- Track 1 : Vendetta_41, Splinter_41
- Track 2 : Huff_42, DinoDaryn_42, TZGordon_43
- Track 3 : Banquo_41
- Track 4 : Goib_43
- Track 5 : TinaLin_40
- Track 6 : Gspu1_33
- Track 7 : Dardanus_38
- Track 8 : Schmidt_36
- Track 9 : Trax_42, LilJank_43, Neville_42
- Track 10 : Rabbitrun_44

Summary of Final Annotations (See graph section above for start numbers):

The start number called the most often in the published annotations is 18, it was called in 9 of the 13 non-draft genes in the pham.

Genes that call this "Most Annotated" start:

- Banquo_41, Dardanus_38, DinoDaryn_42, Goib_43, Huff_42, Splinter_41, TZGordon_43, TinaLin_40, Vendetta_41,

Genes that have the "Most Annotated" start but do not call it:

- Schmidt_36,

Genes that do not have the "Most Annotated" start:

- Gspu1_33, LilJank_43, Neville_42, Rabbitrun_44, Trax_42,

Summary by start number:

Start 15:

- Found in 4 of 15 (26.7%) of genes in pham
- Manual Annotations of this start: 3 of 13
- Called 100.0% of time when present
- Phage (with cluster) where this start called: LilJank_43 (DU2), Neville_42 (DU2), Rabbitrun_44 (DU2), Trax_42 (DU2),

Start 16:

- Found in 5 of 15 (33.3%) of genes in pham
- Manual Annotations of this start: 1 of 13
- Called 40.0% of time when present
- Phage (with cluster) where this start called: Gsput1_33 (CU2), Schmidt_36 (CU4),

Start 18:

- Found in 10 of 15 (66.7%) of genes in pham
- Manual Annotations of this start: 9 of 13
- Called 90.0% of time when present
- Phage (with cluster) where this start called: Banquo_41 (CU1), Dardanus_38 (CU3), DinoDaryn_42 (CU1), Goib_43 (CU1), Huff_42 (CU1), Splinter_41 (CU1), TZGordon_43 (CU1), TinaLin_40 (CU1), Vendetta_41 (CU1),

Summary by clusters:

There are 5 clusters represented in this pham: DU2, CU4, CU3, CU2, CU1,

Info for manual annotations of cluster CU1:

- Start number 18 was manually annotated 8 times for cluster CU1.

Info for manual annotations of cluster CU3:

- Start number 18 was manually annotated 1 time for cluster CU3.

Info for manual annotations of cluster CU4:

- Start number 16 was manually annotated 1 time for cluster CU4.

Info for manual annotations of cluster DU2:

- Start number 15 was manually annotated 3 times for cluster DU2.

Gene Information:

Gene: Banquo_41 Start: 28685, Stop: 28867, Start Num: 18

Candidate Starts for Banquo_41:

(9, 28526), (11, 28565), (14, 28628), (Start: 18 @28685 has 9 MA's), (25, 28817), (28, 28856),

Gene: Dardanus_38 Start: 26951, Stop: 27127, Start Num: 18

Candidate Starts for Dardanus_38:

(11, 26813), (Start: 18 @26951 has 9 MA's), (22, 27011), (24, 27041), (27, 27116),

Gene: DinoDaryn_42 Start: 28877, Stop: 29056, Start Num: 18

Candidate Starts for DinoDaryn_42:

(1, 28478), (2, 28553), (4, 28586), (5, 28589), (6, 28604), (7, 28607), (13, 28799), (14, 28814), (Start: 18 @28877 has 9 MA's), (28, 29048),

Gene: Goib_43 Start: 29553, Stop: 29726, Start Num: 18

Candidate Starts for Goib_43:

(4, 29262), (6, 29280), (7, 29283), (13, 29475), (14, 29490), (Start: 18 @29553 has 9 MA's),

Gene: Gspu1_33 Start: 27090, Stop: 27284, Start Num: 16

Candidate Starts for Gspu1_33:

(3, 26799), (6, 26820), (11, 26970), (Start: 16 @27090 has 1 MA's), (17, 27114), (19, 27126), (22, 27180),

Gene: Huffu_42 Start: 28877, Stop: 29056, Start Num: 18

Candidate Starts for Huffu_42:

(1, 28478), (2, 28553), (4, 28586), (5, 28589), (6, 28604), (7, 28607), (13, 28799), (14, 28814), (Start: 18 @28877 has 9 MA's), (28, 29048),

Gene: LilJank_43 Start: 34290, Stop: 34502, Start Num: 15

Candidate Starts for LilJank_43:

(8, 34077), (10, 34161), (12, 34227), (Start: 15 @34290 has 3 MA's), (Start: 16 @34317 has 1 MA's), (21, 34389), (23, 34413), (25, 34467),

Gene: Neville_42 Start: 33931, Stop: 34143, Start Num: 15

Candidate Starts for Neville_42:

(8, 33718), (10, 33802), (12, 33868), (Start: 15 @33931 has 3 MA's), (Start: 16 @33958 has 1 MA's), (21, 34030), (23, 34054), (25, 34108),

Gene: Rabbitrun_44 Start: 34388, Stop: 34579, Start Num: 15

Candidate Starts for Rabbitrun_44:

(Start: 15 @34388 has 3 MA's), (20, 34466), (23, 34499), (25, 34553),

Gene: Schmidt_36 Start: 26145, Stop: 26339, Start Num: 16

Candidate Starts for Schmidt_36:

(6, 25875), (7, 25878), (Start: 16 @26145 has 1 MA's), (Start: 18 @26172 has 9 MA's), (22, 26232),

Gene: Splinter_41 Start: 29478, Stop: 29651, Start Num: 18

Candidate Starts for Splinter_41:

(4, 29187), (5, 29190), (6, 29205), (7, 29208), (13, 29400), (14, 29415), (Start: 18 @29478 has 9 MA's),

Gene: TZGordon_43 Start: 28792, Stop: 28971, Start Num: 18

Candidate Starts for TZGordon_43:

(1, 28393), (2, 28468), (4, 28501), (5, 28504), (6, 28519), (7, 28522), (13, 28714), (14, 28729), (Start: 18 @28792 has 9 MA's), (28, 28963),

Gene: TinaLin_40 Start: 28358, Stop: 28540, Start Num: 18

Candidate Starts for TinaLin_40:

(9, 28199), (11, 28238), (14, 28301), (Start: 18 @28358 has 9 MA's), (25, 28490), (26, 28514), (28, 28529),

Gene: Trax_42 Start: 34237, Stop: 34449, Start Num: 15

Candidate Starts for Trax_42:

(8, 34024), (10, 34108), (12, 34174), (Start: 15 @34237 has 3 MA's), (Start: 16 @34264 has 1 MA's), (21, 34336), (23, 34360), (25, 34414),

Gene: Vendetta_41 Start: 29478, Stop: 29651, Start Num: 18

Candidate Starts for Vendetta_41:

(4, 29187), (5, 29190), (6, 29205), (7, 29208), (13, 29400), (14, 29415), (Start: 18 @29478 has 9 MA's),