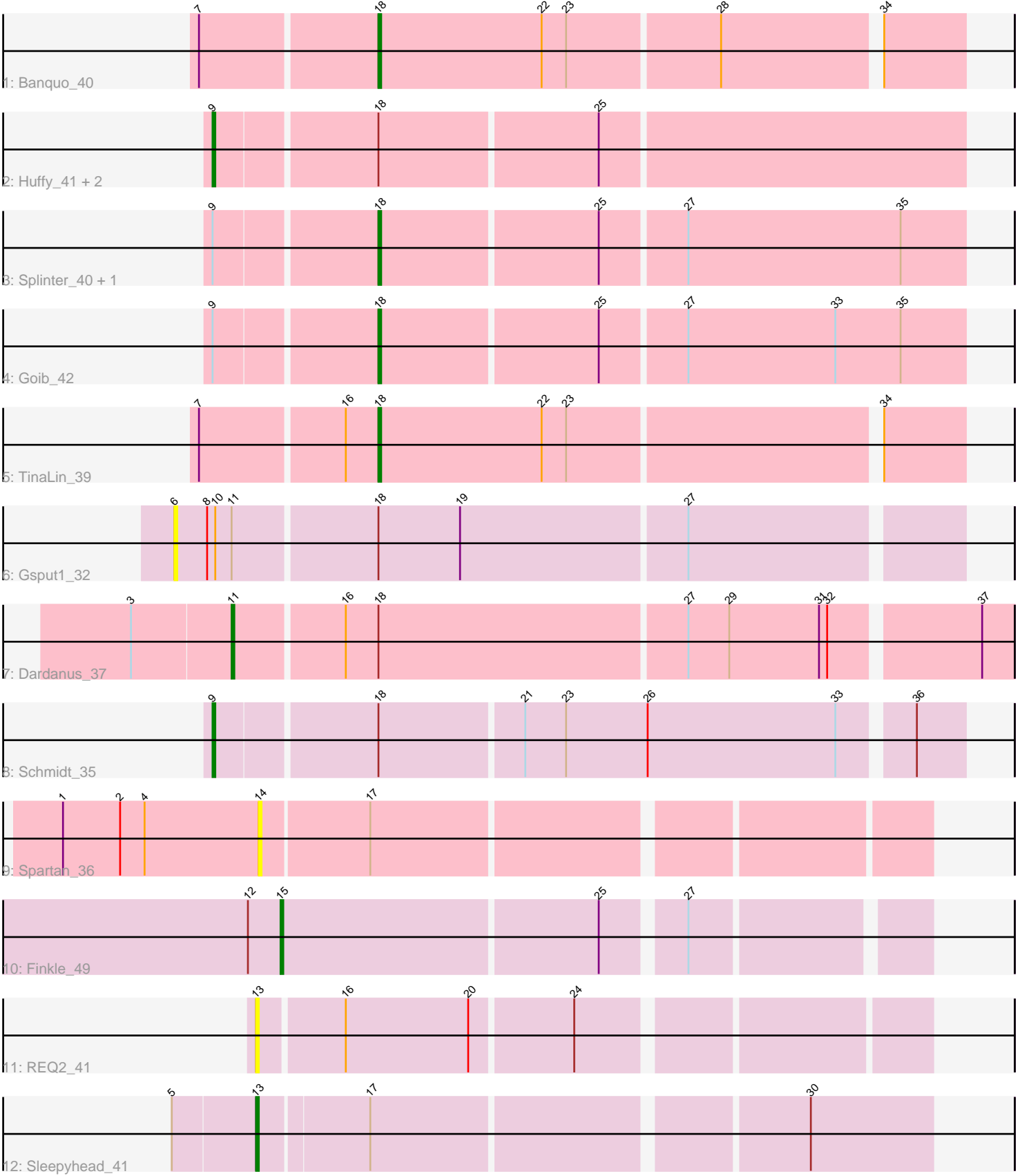


Pham 278709



Note: Tracks are now grouped by subcluster and scaled. Switching in subcluster is indicated by changes in track color. Track scale is now set by default to display the region 30 bp upstream of start 1 to 30 bp downstream of the last possible start. If this default region is judged to be packed too tightly with annotated starts, the track will be further scaled to only show that region of the ORF with annotated starts. This action will be indicated by adding "Zoomed" to the title. For starts, yellow indicates the location of called starts comprised solely of Glimmer/GeneMark auto-annotations, green indicates the location of called starts with at least 1 manual gene annotation.

Pham 278709 Report

This analysis was run 02/07/26 on database version 634.

Pham number 278709 has 15 members, 3 are drafts.

Phages represented in each track:

- Track 1 : Banquo_40
- Track 2 : Huffy_41, TZGordon_42, DinoDaryn_41
- Track 3 : Splinter_40, Vendetta_40
- Track 4 : Goib_42
- Track 5 : TinaLin_39
- Track 6 : Gsput1_32
- Track 7 : Dardanus_37
- Track 8 : Schmidt_35
- Track 9 : Spartan_36
- Track 10 : Finkle_49
- Track 11 : REQ2_41
- Track 12 : Sleepyhead_41

Summary of Final Annotations (See graph section above for start numbers):

The start number called the most often in the published annotations is 18, it was called in 5 of the 12 non-draft genes in the pham.

Genes that call this "Most Annotated" start:

- Banquo_40, Goib_42, Splinter_40, TinaLin_39, Vendetta_40,

Genes that have the "Most Annotated" start but do not call it:

- Dardanus_37, DinoDaryn_41, Gsput1_32, Huffy_41, Schmidt_35, TZGordon_42,

Genes that do not have the "Most Annotated" start:

- Finkle_49, REQ2_41, Sleepyhead_41, Spartan_36,

Summary by start number:

Start 6:

- Found in 1 of 15 (6.7%) of genes in pham
- No Manual Annotations of this start.
- Called 100.0% of time when present
- Phage (with cluster) where this start called: Gsput1_32 (CU2),

Start 9:

- Found in 7 of 15 (46.7%) of genes in pham
- Manual Annotations of this start: 4 of 12
- Called 57.1% of time when present
- Phage (with cluster) where this start called: DinoDaryn_41 (CU1), Huffy_41 (CU1), Schmidt_35 (CU4), TZGordon_42 (CU1),

Start 11:

- Found in 2 of 15 (13.3%) of genes in pham
- Manual Annotations of this start: 1 of 12
- Called 50.0% of time when present
- Phage (with cluster) where this start called: Dardanus_37 (CU3),

Start 13:

- Found in 2 of 15 (13.3%) of genes in pham
- Manual Annotations of this start: 1 of 12
- Called 100.0% of time when present
- Phage (with cluster) where this start called: REQ2_41 (singleton), Sleepyhead_41 (singleton),

Start 14:

- Found in 1 of 15 (6.7%) of genes in pham
- No Manual Annotations of this start.
- Called 100.0% of time when present
- Phage (with cluster) where this start called: Spartan_36 (ES),

Start 15:

- Found in 1 of 15 (6.7%) of genes in pham
- Manual Annotations of this start: 1 of 12
- Called 100.0% of time when present
- Phage (with cluster) where this start called: Finkle_49 (singleton),

Start 18:

- Found in 11 of 15 (73.3%) of genes in pham
- Manual Annotations of this start: 5 of 12
- Called 45.5% of time when present
- Phage (with cluster) where this start called: Banquo_40 (CU1), Goib_42 (CU1), Splinter_40 (CU1), TinaLin_39 (CU1), Vendetta_40 (CU1),

Summary by clusters:

There are 6 clusters represented in this pham: singleton, CU4, CU3, CU2, CU1, ES,

Info for manual annotations of cluster CU1:

- Start number 9 was manually annotated 3 times for cluster CU1.
- Start number 18 was manually annotated 5 times for cluster CU1.

Info for manual annotations of cluster CU3:

- Start number 11 was manually annotated 1 time for cluster CU3.

Info for manual annotations of cluster CU4:

- Start number 9 was manually annotated 1 time for cluster CU4.

Gene Information:

Gene: Banquo_40 Start: 28482, Stop: 28688, Start Num: 18

Candidate Starts for Banquo_40:

(7, 28419), (Start: 18 @28482 has 5 MA's), (22, 28542), (23, 28551), (28, 28605), (34, 28659),

Gene: Dardanus_37 Start: 26679, Stop: 26954, Start Num: 11

Candidate Starts for Dardanus_37:

(3, 26643), (Start: 11 @26679 has 1 MA's), (16, 26718), (Start: 18 @26730 has 5 MA's), (27, 26841), (29, 26856), (31, 26889), (32, 26892), (37, 26943),

Gene: DinoDaryn_41 Start: 28614, Stop: 28880, Start Num: 9

Candidate Starts for DinoDaryn_41:

(Start: 9 @28614 has 4 MA's), (Start: 18 @28671 has 5 MA's), (25, 28749),

Gene: Finkle_49 Start: 34032, Stop: 34253, Start Num: 15

Candidate Starts for Finkle_49:

(12, 34020), (Start: 15 @34032 has 1 MA's), (25, 34146), (27, 34173),

Gene: Goib_42 Start: 29347, Stop: 29556, Start Num: 18

Candidate Starts for Goib_42:

(Start: 9 @29290 has 4 MA's), (Start: 18 @29347 has 5 MA's), (25, 29425), (27, 29455), (33, 29509), (35, 29533),

Gene: Gspu1_32 Start: 26815, Stop: 27093, Start Num: 6

Candidate Starts for Gspu1_32:

(6, 26815), (8, 26827), (10, 26830), (Start: 11 @26836 has 1 MA's), (Start: 18 @26887 has 5 MA's), (19, 26917), (27, 26998),

Gene: Huffy_41 Start: 28614, Stop: 28880, Start Num: 9

Candidate Starts for Huffy_41:

(Start: 9 @28614 has 4 MA's), (Start: 18 @28671 has 5 MA's), (25, 28749),

Gene: REQ2_41 Start: 32596, Stop: 32826, Start Num: 13

Candidate Starts for REQ2_41:

(Start: 13 @32596 has 1 MA's), (16, 32626), (20, 32671), (24, 32707),

Gene: Schmidt_35 Start: 25885, Stop: 26148, Start Num: 9

Candidate Starts for Schmidt_35:

(Start: 9 @25885 has 4 MA's), (Start: 18 @25942 has 5 MA's), (21, 25993), (23, 26008), (26, 26038), (33, 26107), (36, 26131),

Gene: Sleepyhead_41 Start: 30549, Stop: 30782, Start Num: 13

Candidate Starts for Sleepyhead_41:

(5, 30519), (Start: 13 @30549 has 1 MA's), (17, 30588), (30, 30738),

Gene: Spartan_36 Start: 32258, Stop: 32488, Start Num: 14

Candidate Starts for Spartan_36:

(1, 32186), (2, 32207), (4, 32216), (14, 32258), (17, 32297),

Gene: Splinter_40 Start: 29272, Stop: 29481, Start Num: 18

Candidate Starts for Splinter_40:

(Start: 9 @29215 has 4 MA's), (Start: 18 @29272 has 5 MA's), (25, 29350), (27, 29380), (35, 29458),

Gene: TZGordon_42 Start: 28529, Stop: 28795, Start Num: 9

Candidate Starts for TZGordon_42:

(Start: 9 @28529 has 4 MA's), (Start: 18 @28586 has 5 MA's), (25, 28664),

Gene: TinaLin_39 Start: 28155, Stop: 28361, Start Num: 18

Candidate Starts for TinaLin_39:

(7, 28092), (16, 28143), (Start: 18 @28155 has 5 MA's), (22, 28215), (23, 28224), (34, 28332),

Gene: Vendetta_40 Start: 29272, Stop: 29481, Start Num: 18

Candidate Starts for Vendetta_40:

(Start: 9 @29215 has 4 MA's), (Start: 18 @29272 has 5 MA's), (25, 29350), (27, 29380), (35, 29458),