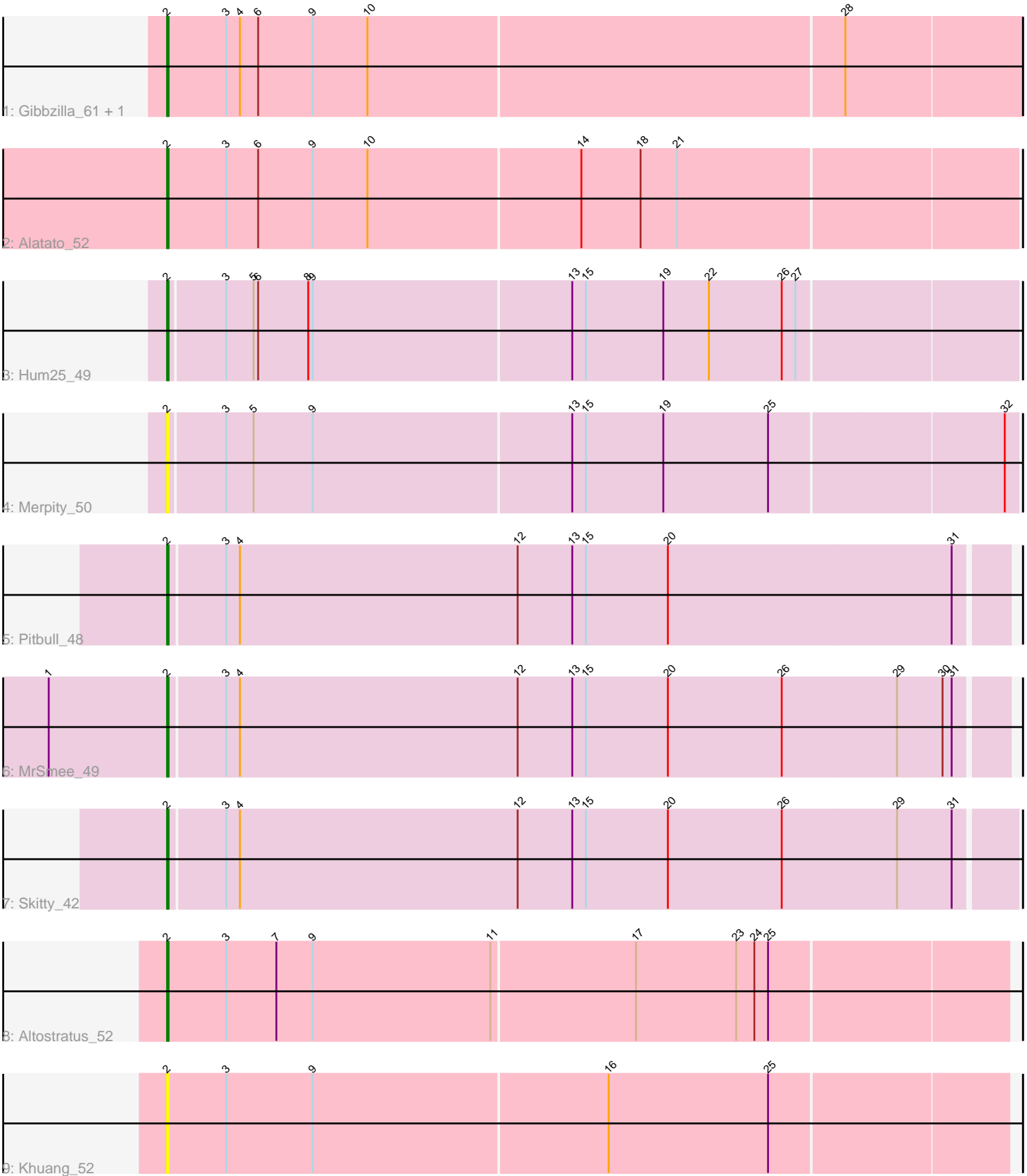


Pham 278830



Note: Tracks are now grouped by subcluster and scaled. Switching in subcluster is indicated by changes in track color. Track scale is now set by default to display the region 30 bp upstream of start 1 to 30 bp downstream of the last possible start. If this default region is judged to be packed too tightly with annotated starts, the track will be further scaled to only show that region of the ORF with annotated starts. This action will be indicated by adding "Zoomed" to the title. For starts, yellow indicates the location of called starts comprised solely of Glimmer/GeneMark auto-annotations, green indicates the location of called starts with at least 1 manual gene annotation.

Pham 278830 Report

This analysis was run 02/07/26 on database version 634.

Pham number 278830 has 10 members, 3 are drafts.

Phages represented in each track:

- Track 1 : Gibbzilla_61, Shoya_54
- Track 2 : Alatato_52
- Track 3 : Hum25_49
- Track 4 : Merpity_50
- Track 5 : Pitbull_48
- Track 6 : MrSmee_49
- Track 7 : Skitty_42
- Track 8 : Altostratus_52
- Track 9 : Khuang_52

Summary of Final Annotations (See graph section above for start numbers):

The start number called the most often in the published annotations is 2, it was called in 7 of the 7 non-draft genes in the pham.

Genes that call this "Most Annotated" start:

- Alatato_52, Altostratus_52, Gibbzilla_61, Hum25_49, Khuang_52, Merpity_50, MrSmee_49, Pitbull_48, Shoya_54, Skitty_42,

Genes that have the "Most Annotated" start but do not call it:

-

Genes that do not have the "Most Annotated" start:

-

Summary by start number:

Start 2:

- Found in 10 of 10 (100.0%) of genes in pham
- Manual Annotations of this start: 7 of 7
- Called 100.0% of time when present
- Phage (with cluster) where this start called: Alatato_52 (FB), Altostratus_52 (FS), Gibbzilla_61 (FB), Hum25_49 (FQ), Khuang_52 (FS), Merpity_50 (FQ), MrSmee_49 (FQ), Pitbull_48 (FQ), Shoya_54 (FB), Skitty_42 (FQ),

Summary by clusters:

There are 3 clusters represented in this pham: FQ, FB, FS,

Info for manual annotations of cluster FB:

- Start number 2 was manually annotated 2 times for cluster FB.

Info for manual annotations of cluster FQ:

- Start number 2 was manually annotated 4 times for cluster FQ.

Info for manual annotations of cluster FS:

- Start number 2 was manually annotated 1 time for cluster FS.

Gene Information:

Gene: Alatato_52 Start: 30671, Stop: 31222, Start Num: 2

Candidate Starts for Alatato_52:

(Start: 2 @30671 has 7 MA's), (3, 30710), (6, 30731), (9, 30767), (10, 30803), (14, 30941), (18, 30980), (21, 31004),

Gene: Altostratus_52 Start: 30510, Stop: 31055, Start Num: 2

Candidate Starts for Altostratus_52:

(Start: 2 @30510 has 7 MA's), (3, 30549), (7, 30582), (9, 30606), (11, 30723), (17, 30816), (23, 30882), (24, 30894), (25, 30903),

Gene: Gibbzilla_61 Start: 32014, Stop: 32568, Start Num: 2

Candidate Starts for Gibbzilla_61:

(Start: 2 @32014 has 7 MA's), (3, 32053), (4, 32062), (6, 32074), (9, 32110), (10, 32146), (28, 32455),

Gene: Hum25_49 Start: 28897, Stop: 29445, Start Num: 2

Candidate Starts for Hum25_49:

(Start: 2 @28897 has 7 MA's), (3, 28933), (5, 28951), (6, 28954), (8, 28987), (9, 28990), (13, 29158), (15, 29167), (19, 29218), (22, 29248), (26, 29296), (27, 29305),

Gene: Khuang_52 Start: 30706, Stop: 31251, Start Num: 2

Candidate Starts for Khuang_52:

(Start: 2 @30706 has 7 MA's), (3, 30745), (9, 30802), (16, 30994), (25, 31099),

Gene: Merpity_50 Start: 29915, Stop: 30463, Start Num: 2

Candidate Starts for Merpity_50:

(Start: 2 @29915 has 7 MA's), (3, 29951), (5, 29969), (9, 30008), (13, 30176), (15, 30185), (19, 30236), (25, 30305), (32, 30455),

Gene: MrSmee_49 Start: 30095, Stop: 30640, Start Num: 2

Candidate Starts for MrSmee_49:

(1, 30017), (Start: 2 @30095 has 7 MA's), (3, 30131), (4, 30140), (12, 30323), (13, 30359), (15, 30368), (20, 30422), (26, 30497), (29, 30572), (30, 30602), (31, 30608),

Gene: Pitbull_48 Start: 28431, Stop: 28976, Start Num: 2

Candidate Starts for Pitbull_48:

(Start: 2 @28431 has 7 MA's), (3, 28467), (4, 28476), (12, 28659), (13, 28695), (15, 28704), (20, 28758), (31, 28944),

Gene: Shoya_54 Start: 30638, Stop: 31192, Start Num: 2

Candidate Starts for Shoya_54:

(Start: 2 @30638 has 7 MA's), (3, 30677), (4, 30686), (6, 30698), (9, 30734), (10, 30770), (28, 31079),

Gene: Skitty_42 Start: 27777, Stop: 28328, Start Num: 2

Candidate Starts for Skitty_42:

(Start: 2 @27777 has 7 MA's), (3, 27813), (4, 27822), (12, 28005), (13, 28041), (15, 28050), (20, 28104), (26, 28179), (29, 28254), (31, 28290),