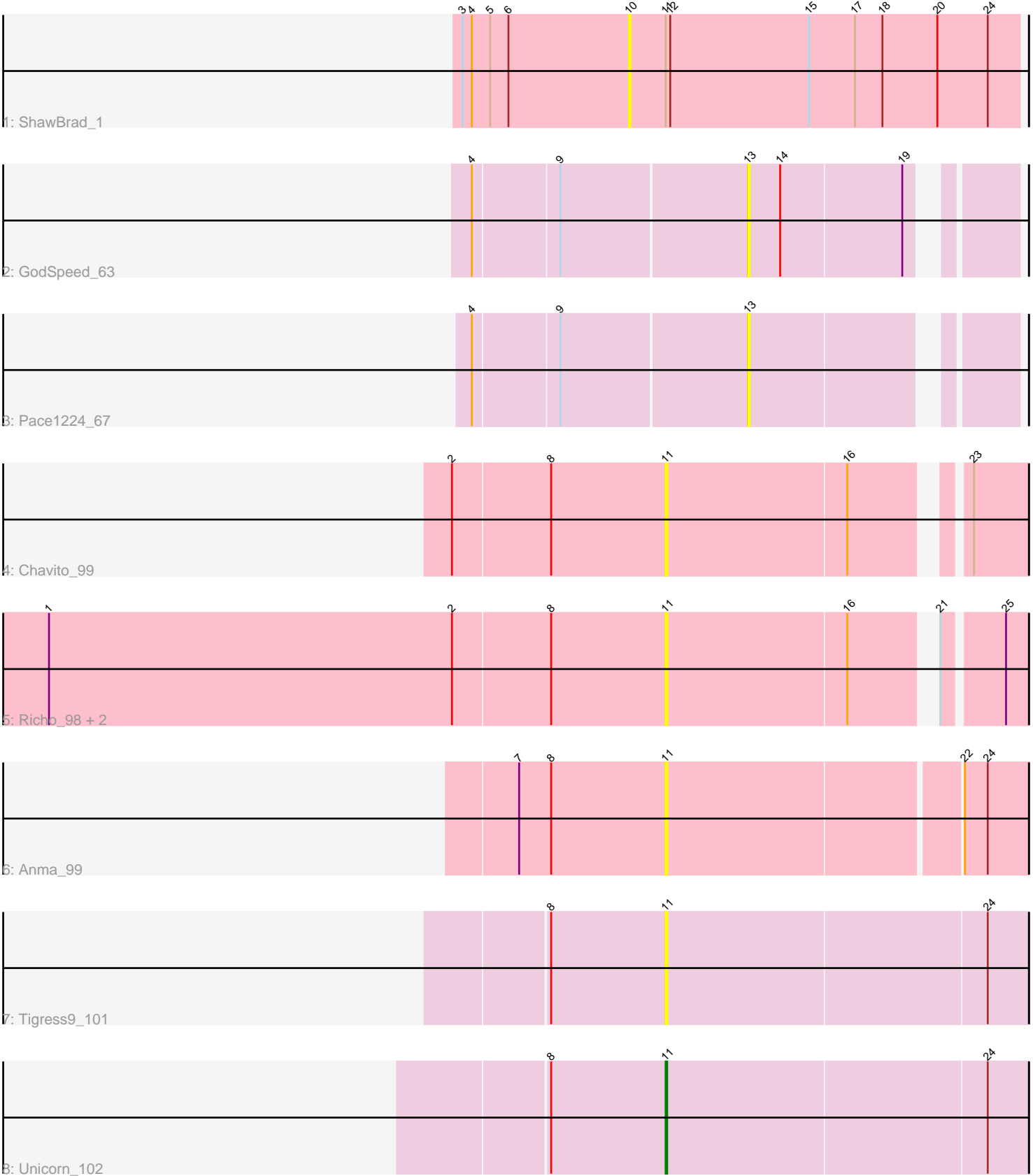


Pham 278859



Note: Tracks are now grouped by subcluster and scaled. Switching in subcluster is indicated by changes in track color. Track scale is now set by default to display the region 30 bp upstream of start 1 to 30 bp downstream of the last possible start. If this default region is judged to be packed too tightly with annotated starts, the track will be further scaled to only show that region of the ORF with annotated starts. This action will be indicated by adding "Zoomed" to the title. For starts, yellow indicates the location of called starts comprised solely of Glimmer/GeneMark auto-annotations, green indicates the location of called starts with at least 1 manual gene annotation.

Pham 278859 Report

This analysis was run 02/07/26 on database version 634.

Pham number 278859 has 10 members, 9 are drafts.

Phages represented in each track:

- Track 1 : ShawBrad_1
- Track 2 : GodSpeed_63
- Track 3 : Pace1224_67
- Track 4 : Chavito_99
- Track 5 : Richo_98, Dartin_98, McMater_98
- Track 6 : Anma_99
- Track 7 : Tigress9_101
- Track 8 : Unicorn_102

Summary of Final Annotations (See graph section above for start numbers):

The start number called the most often in the published annotations is 11, it was called in 1 of the 1 non-draft genes in the pham.

Genes that call this "Most Annotated" start:

- Anma_99, Chavito_99, Dartin_98, McMater_98, Richo_98, Tigress9_101, Unicorn_102,

Genes that have the "Most Annotated" start but do not call it:

- ShawBrad_1,

Genes that do not have the "Most Annotated" start:

- GodSpeed_63, Pace1224_67,

Summary by start number:

Start 10:

- Found in 1 of 10 (10.0%) of genes in pham
- No Manual Annotations of this start.
- Called 100.0% of time when present
- Phage (with cluster) where this start called: ShawBrad_1 (DN1),

Start 11:

- Found in 8 of 10 (80.0%) of genes in pham

- Manual Annotations of this start: 1 of 1
- Called 87.5% of time when present
- Phage (with cluster) where this start called: Anma_99 (K1), Chavito_99 (K1), Dartin_98 (K1), McMater_98 (K1), Richo_98 (K1), Tigress9_101 (K6), Unicorn_102 (K6),

Start 13:

- Found in 2 of 10 (20.0%) of genes in pham
- No Manual Annotations of this start.
- Called 100.0% of time when present
- Phage (with cluster) where this start called: GodSpeed_63 (G2), Pace1224_67 (G2),

Summary by clusters:

There are 4 clusters represented in this pham: K1, DN1, K6, G2,

Info for manual annotations of cluster K6:

- Start number 11 was manually annotated 1 time for cluster K6.

Gene Information:

Gene: Anma_99 Start: 60243, Stop: 60470, Start Num: 11

Candidate Starts for Anma_99:

(7, 60147), (8, 60168), (Start: 11 @60243 has 1 MA's), (22, 60429), (24, 60444),

Gene: Chavito_99 Start: 61820, Stop: 62032, Start Num: 11

Candidate Starts for Chavito_99:

(2, 61682), (8, 61745), (Start: 11 @61820 has 1 MA's), (16, 61937), (23, 61997),

Gene: Dartin_98 Start: 61129, Stop: 61341, Start Num: 11

Candidate Starts for Dartin_98:

(1, 60727), (2, 60991), (8, 61054), (Start: 11 @61129 has 1 MA's), (16, 61246), (21, 61291), (25, 61327),

Gene: GodSpeed_63 Start: 43563, Stop: 43715, Start Num: 13

Candidate Starts for GodSpeed_63:

(4, 43389), (9, 43443), (13, 43563), (14, 43584), (19, 43662),

Gene: McMater_98 Start: 61129, Stop: 61341, Start Num: 11

Candidate Starts for McMater_98:

(1, 60727), (2, 60991), (8, 61054), (Start: 11 @61129 has 1 MA's), (16, 61246), (21, 61291), (25, 61327),

Gene: Pace1224_67 Start: 44087, Stop: 44239, Start Num: 13

Candidate Starts for Pace1224_67:

(4, 43913), (9, 43967), (13, 44087),

Gene: Richo_98 Start: 61129, Stop: 61341, Start Num: 11

Candidate Starts for Richo_98:

(1, 60727), (2, 60991), (8, 61054), (Start: 11 @61129 has 1 MA's), (16, 61246), (21, 61291), (25, 61327),

Gene: ShawBrad_1 Start: 117, Stop: 371, Start Num: 10

Candidate Starts for ShawBrad_1:

(3, 9), (4, 15), (5, 27), (6, 39), (10, 117), (Start: 11 @141 has 1 MA's), (12, 144), (15, 234), (17, 264), (18, 282), (20, 318), (24, 351),

Gene: Tigress9_101 Start: 60365, Stop: 60598, Start Num: 11

Candidate Starts for Tigress9_101:

(8, 60290), (Start: 11 @60365 has 1 MA's), (24, 60572),

Gene: Unicorn_102 Start: 60924, Stop: 61157, Start Num: 11

Candidate Starts for Unicorn_102:

(8, 60849), (Start: 11 @60924 has 1 MA's), (24, 61131),