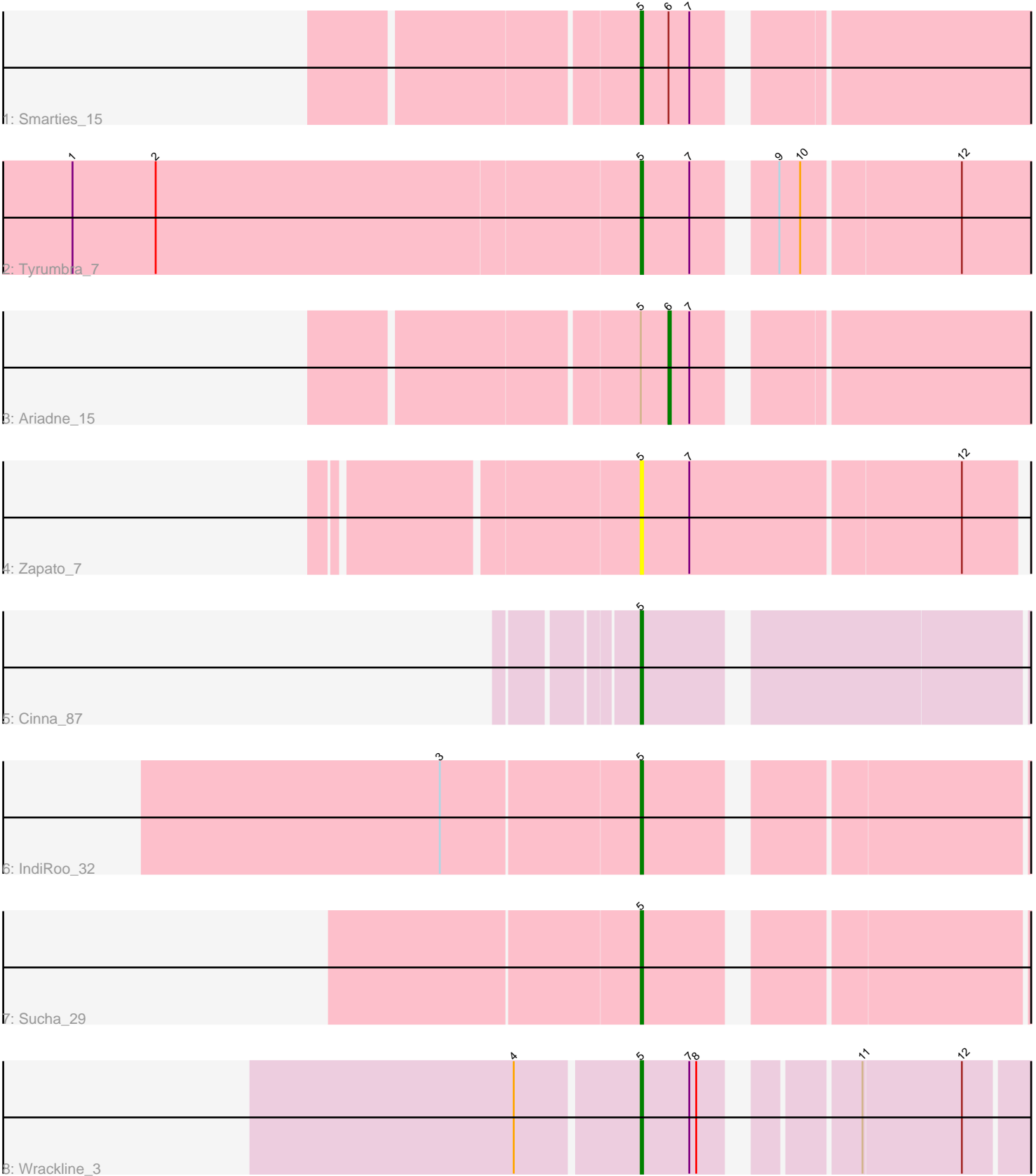


Pham 278899



Note: Tracks are now grouped by subcluster and scaled. Switching in subcluster is indicated by changes in track color. Track scale is now set by default to display the region 30 bp upstream of start 1 to 30 bp downstream of the last possible start. If this default region is judged to be packed too tightly with annotated starts, the track will be further scaled to only show that region of the ORF with annotated starts. This action will be indicated by adding "Zoomed" to the title. For starts, yellow indicates the location of called starts comprised solely of Glimmer/GeneMark auto-annotations, green indicates the location of called starts with at least 1 manual gene annotation.

Pham 278899 Report

This analysis was run 02/07/26 on database version 634.

Pham number 278899 has 8 members, 1 are drafts.

Phages represented in each track:

- Track 1 : Smarties_15
- Track 2 : Tyrumbra_7
- Track 3 : Ariadne_15
- Track 4 : Zapato_7
- Track 5 : Cinna_87
- Track 6 : IndiRoo_32
- Track 7 : Sucha_29
- Track 8 : Wrackline_3

Summary of Final Annotations (See graph section above for start numbers):

The start number called the most often in the published annotations is 5, it was called in 6 of the 7 non-draft genes in the pham.

Genes that call this "Most Annotated" start:

- Cinna_87, IndiRoo_32, Smarties_15, Sucha_29, Tyrumbra_7, Wrackline_3, Zapato_7,

Genes that have the "Most Annotated" start but do not call it:

- Ariadne_15,

Genes that do not have the "Most Annotated" start:

-

Summary by start number:

Start 5:

- Found in 8 of 8 (100.0%) of genes in pham
- Manual Annotations of this start: 6 of 7
- Called 87.5% of time when present
- Phage (with cluster) where this start called: Cinna_87 (EI), IndiRoo_32 (EJ), Smarties_15 (EC), Sucha_29 (EJ), Tyrumbra_7 (EC), Wrackline_3 (GF), Zapato_7 (EC),

Start 6:

- Found in 2 of 8 (25.0%) of genes in pham
- Manual Annotations of this start: 1 of 7
- Called 50.0% of time when present
- Phage (with cluster) where this start called: Ariadne_15 (EC),

Summary by clusters:

There are 4 clusters represented in this pham: GF, EI, EC, EJ,

Info for manual annotations of cluster EC:

- Start number 5 was manually annotated 2 times for cluster EC.
- Start number 6 was manually annotated 1 time for cluster EC.

Info for manual annotations of cluster EI:

- Start number 5 was manually annotated 1 time for cluster EI.

Info for manual annotations of cluster EJ:

- Start number 5 was manually annotated 2 times for cluster EJ.

Info for manual annotations of cluster GF:

- Start number 5 was manually annotated 1 time for cluster GF.

Gene Information:

Gene: Ariadne_15 Start: 5952, Stop: 6119, Start Num: 6

Candidate Starts for Ariadne_15:

(Start: 5 @5940 has 6 MA's), (Start: 6 @5952 has 1 MA's), (7, 5961),

Gene: Cinna_87 Start: 51741, Stop: 51929, Start Num: 5

Candidate Starts for Cinna_87:

(Start: 5 @51741 has 6 MA's),

Gene: IndiRoo_32 Start: 21530, Stop: 21706, Start Num: 5

Candidate Starts for IndiRoo_32:

(3, 21446), (Start: 5 @21530 has 6 MA's),

Gene: Smarties_15 Start: 5940, Stop: 6119, Start Num: 5

Candidate Starts for Smarties_15:

(Start: 5 @5940 has 6 MA's), (Start: 6 @5952 has 1 MA's), (7, 5961),

Gene: Sucha_29 Start: 20492, Stop: 20668, Start Num: 5

Candidate Starts for Sucha_29:

(Start: 5 @20492 has 6 MA's),

Gene: Tyrumbra_7 Start: 3833, Stop: 4012, Start Num: 5

Candidate Starts for Tyrumbra_7:

(1, 3590), (2, 3626), (Start: 5 @3833 has 6 MA's), (7, 3854), (9, 3881), (10, 3890), (12, 3956),

Gene: Wrackline_3 Start: 455, Stop: 625, Start Num: 5

Candidate Starts for Wrackline_3:

(4, 404), (Start: 5 @455 has 6 MA's), (7, 476), (8, 479), (11, 533), (12, 575),

Gene: Zapato_7 Start: 3908, Stop: 4093, Start Num: 5

Candidate Starts for Zapato_7:

(Start: 5 @3908 has 6 MA's), (7, 3929), (12, 4043),