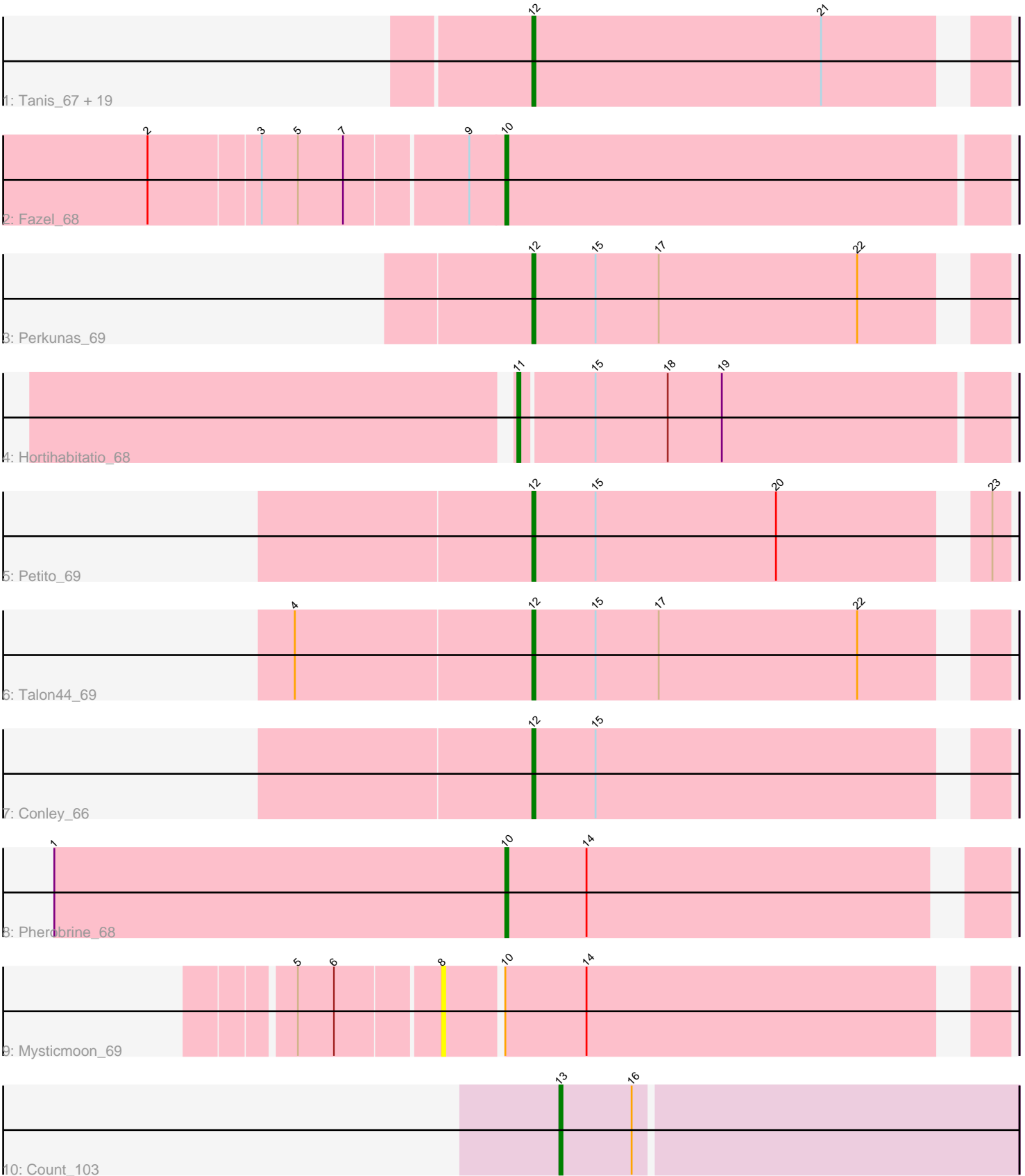


Pham 280736



Note: Tracks are now grouped by subcluster and scaled. Switching in subcluster is indicated by changes in track color. Track scale is now set by default to display the region 30 bp upstream of start 1 to 30 bp downstream of the last possible start. If this default region is judged to be packed too tightly with annotated starts, the track will be further scaled to only show that region of the ORF with annotated starts. This action will be indicated by adding "Zoomed" to the title. For starts, yellow indicates the location of called starts comprised solely of Glimmer/GeneMark auto-annotations, green indicates the location of called starts with at least 1 manual gene annotation.

Pham 280736 Report

This analysis was run 02/07/26 on database version 634.

Pham number 280736 has 29 members, 6 are drafts.

Phages represented in each track:

- Track 1 : Tanis_67, Bugg_70, Captrips_66, Capybara_67, Trufflozitus_71, Avazak_68, ChickyNuggy_70, Artorias_67, Football_69, Gill_67, NoPickles_66, FortCran_67, Tairn4Wing_69, Odesza_66, Dancer_67, Magel_68, JulesRay_67, Gravy_66, Roney_67, Kerry_66
- Track 2 : Fazel_68
- Track 3 : Perkunas_69
- Track 4 : Hortihabitatio_68
- Track 5 : Petito_69
- Track 6 : Talon44_69
- Track 7 : Conley_66
- Track 8 : Pherobrine_68
- Track 9 : Mysticmoon_69
- Track 10 : Count_103

Summary of Final Annotations (See graph section above for start numbers):

The start number called the most often in the published annotations is 12, it was called in 19 of the 23 non-draft genes in the pham.

Genes that call this "Most Annotated" start:

- Artorias_67, Avazak_68, Bugg_70, Captrips_66, Capybara_67, ChickyNuggy_70, Conley_66, Dancer_67, Football_69, FortCran_67, Gill_67, Gravy_66, JulesRay_67, Kerry_66, Magel_68, NoPickles_66, Odesza_66, Perkunas_69, Petito_69, Roney_67, Tairn4Wing_69, Talon44_69, Tanis_67, Trufflozitus_71,

Genes that have the "Most Annotated" start but do not call it:

-

Genes that do not have the "Most Annotated" start:

- Count_103, Fazel_68, Hortihabitatio_68, Mysticmoon_69, Pherobrine_68,

Summary by start number:

Start 8:

- Found in 1 of 29 (3.4%) of genes in pham
- No Manual Annotations of this start.
- Called 100.0% of time when present
- Phage (with cluster) where this start called: Mysticmoon_69 (DJ),

Start 10:

- Found in 3 of 29 (10.3%) of genes in pham
- Manual Annotations of this start: 2 of 23
- Called 66.7% of time when present
- Phage (with cluster) where this start called: Fazel_68 (DJ), Pherobrine_68 (DJ),

Start 11:

- Found in 1 of 29 (3.4%) of genes in pham
- Manual Annotations of this start: 1 of 23
- Called 100.0% of time when present
- Phage (with cluster) where this start called: Hortihabitatio_68 (DJ),

Start 12:

- Found in 24 of 29 (82.8%) of genes in pham
- Manual Annotations of this start: 19 of 23
- Called 100.0% of time when present
- Phage (with cluster) where this start called: Artorias_67 (DJ), Avazak_68 (DJ), Bugg_70 (DJ), Captrips_66 (DJ), Cappybara_67 (DJ), ChickyNuggy_70 (DJ), Conley_66 (DJ), Dancer_67 (DJ), Football_69 (DJ), FortCran_67 (DJ), Gill_67 (DJ), Gravy_66 (DJ), JulesRay_67 (DJ), Kerry_66 (DJ), Magel_68 (DJ), NoPickles_66 (DJ), Odesza_66 (DJ), Perkunas_69 (DJ), Petite_69 (DJ), Roney_67 (DJ), Tairn4Wing_69 (DJ), Talon44_69 (DJ), Tanis_67 (DJ), Trufflozitus_71 (DJ),

Start 13:

- Found in 1 of 29 (3.4%) of genes in pham
- Manual Annotations of this start: 1 of 23
- Called 100.0% of time when present
- Phage (with cluster) where this start called: Count_103 (EL),

Summary by clusters:

There are 2 clusters represented in this pham: EL, DJ,

Info for manual annotations of cluster DJ:

- Start number 10 was manually annotated 2 times for cluster DJ.
- Start number 11 was manually annotated 1 time for cluster DJ.
- Start number 12 was manually annotated 19 times for cluster DJ.

Info for manual annotations of cluster EL:

- Start number 13 was manually annotated 1 time for cluster EL.

Gene Information:

Gene: Artorias_67 Start: 47313, Stop: 47459, Start Num: 12

Candidate Starts for Artorias_67:

(Start: 12 @47313 has 19 MA's), (21, 47409),

Gene: Avazak_68 Start: 47640, Stop: 47786, Start Num: 12

Candidate Starts for Avazak_68:

(Start: 12 @47640 has 19 MA's), (21, 47736),

Gene: Bugg_70 Start: 47358, Stop: 47504, Start Num: 12

Candidate Starts for Bugg_70:

(Start: 12 @47358 has 19 MA's), (21, 47454),

Gene: Captrips_66 Start: 46788, Stop: 46934, Start Num: 12

Candidate Starts for Captrips_66:

(Start: 12 @46788 has 19 MA's), (21, 46884),

Gene: Capybara_67 Start: 47119, Stop: 47265, Start Num: 12

Candidate Starts for Capybara_67:

(Start: 12 @47119 has 19 MA's), (21, 47215),

Gene: ChickyNuggy_70 Start: 47381, Stop: 47527, Start Num: 12

Candidate Starts for ChickyNuggy_70:

(Start: 12 @47381 has 19 MA's), (21, 47477),

Gene: Conley_66 Start: 47893, Stop: 48039, Start Num: 12

Candidate Starts for Conley_66:

(Start: 12 @47893 has 19 MA's), (15, 47914),

Gene: Count_103 Start: 64900, Stop: 65049, Start Num: 13

Candidate Starts for Count_103:

(Start: 13 @64900 has 1 MA's), (16, 64924),

Gene: Dancer_67 Start: 47048, Stop: 47194, Start Num: 12

Candidate Starts for Dancer_67:

(Start: 12 @47048 has 19 MA's), (21, 47144),

Gene: Fazel_68 Start: 47387, Stop: 47551, Start Num: 10

Candidate Starts for Fazel_68:

(2, 47276), (3, 47312), (5, 47324), (7, 47339), (9, 47378), (Start: 10 @47387 has 2 MA's),

Gene: Football_69 Start: 46939, Stop: 47085, Start Num: 12

Candidate Starts for Football_69:

(Start: 12 @46939 has 19 MA's), (21, 47035),

Gene: FortCran_67 Start: 47313, Stop: 47459, Start Num: 12

Candidate Starts for FortCran_67:

(Start: 12 @47313 has 19 MA's), (21, 47409),

Gene: Gill_67 Start: 47131, Stop: 47277, Start Num: 12

Candidate Starts for Gill_67:

(Start: 12 @47131 has 19 MA's), (21, 47227),

Gene: Gravy_66 Start: 46809, Stop: 46955, Start Num: 12

Candidate Starts for Gravy_66:

(Start: 12 @46809 has 19 MA's), (21, 46905),

Gene: Hortihabitatio_68 Start: 47777, Stop: 47935, Start Num: 11
Candidate Starts for Hortihabitatio_68:
(Start: 11 @47777 has 1 MA's), (15, 47801), (18, 47825), (19, 47843),

Gene: JulesRay_67 Start: 47306, Stop: 47452, Start Num: 12
Candidate Starts for JulesRay_67:
(Start: 12 @47306 has 19 MA's), (21, 47402),

Gene: Kerry_66 Start: 46809, Stop: 46955, Start Num: 12
Candidate Starts for Kerry_66:
(Start: 12 @46809 has 19 MA's), (21, 46905),

Gene: Magel_68 Start: 47046, Stop: 47192, Start Num: 12
Candidate Starts for Magel_68:
(Start: 12 @47046 has 19 MA's), (21, 47142),

Gene: Mysticmoon_69 Start: 48525, Stop: 48698, Start Num: 8
Candidate Starts for Mysticmoon_69:
(5, 48480), (6, 48492), (8, 48525), (Start: 10 @48543 has 2 MA's), (14, 48570),

Gene: NoPickles_66 Start: 46474, Stop: 46620, Start Num: 12
Candidate Starts for NoPickles_66:
(Start: 12 @46474 has 19 MA's), (21, 46570),

Gene: Odesza_66 Start: 46990, Stop: 47136, Start Num: 12
Candidate Starts for Odesza_66:
(Start: 12 @46990 has 19 MA's), (21, 47086),

Gene: Perkunas_69 Start: 47394, Stop: 47540, Start Num: 12
Candidate Starts for Perkunas_69:
(Start: 12 @47394 has 19 MA's), (15, 47415), (17, 47436), (22, 47502),

Gene: Petito_69 Start: 48564, Stop: 48710, Start Num: 12
Candidate Starts for Petito_69:
(Start: 12 @48564 has 19 MA's), (15, 48585), (20, 48645), (23, 48705),

Gene: Pherobrine_68 Start: 48600, Stop: 48755, Start Num: 10
Candidate Starts for Pherobrine_68:
(1, 48450), (Start: 10 @48600 has 2 MA's), (14, 48627),

Gene: Roney_67 Start: 47156, Stop: 47302, Start Num: 12
Candidate Starts for Roney_67:
(Start: 12 @47156 has 19 MA's), (21, 47252),

Gene: Tairn4Wing_69 Start: 47150, Stop: 47296, Start Num: 12
Candidate Starts for Tairn4Wing_69:
(Start: 12 @47150 has 19 MA's), (21, 47246),

Gene: Talon44_69 Start: 47428, Stop: 47574, Start Num: 12
Candidate Starts for Talon44_69:
(4, 47350), (Start: 12 @47428 has 19 MA's), (15, 47449), (17, 47470), (22, 47536),

Gene: Tanis_67 Start: 46976, Stop: 47122, Start Num: 12

Candidate Starts for Tanis_67:

(Start: 12 @46976 has 19 MA's), (21, 47072),

Gene: Trufflozitus_71 Start: 47664, Stop: 47810, Start Num: 12

Candidate Starts for Trufflozitus_71:

(Start: 12 @47664 has 19 MA's), (21, 47760),