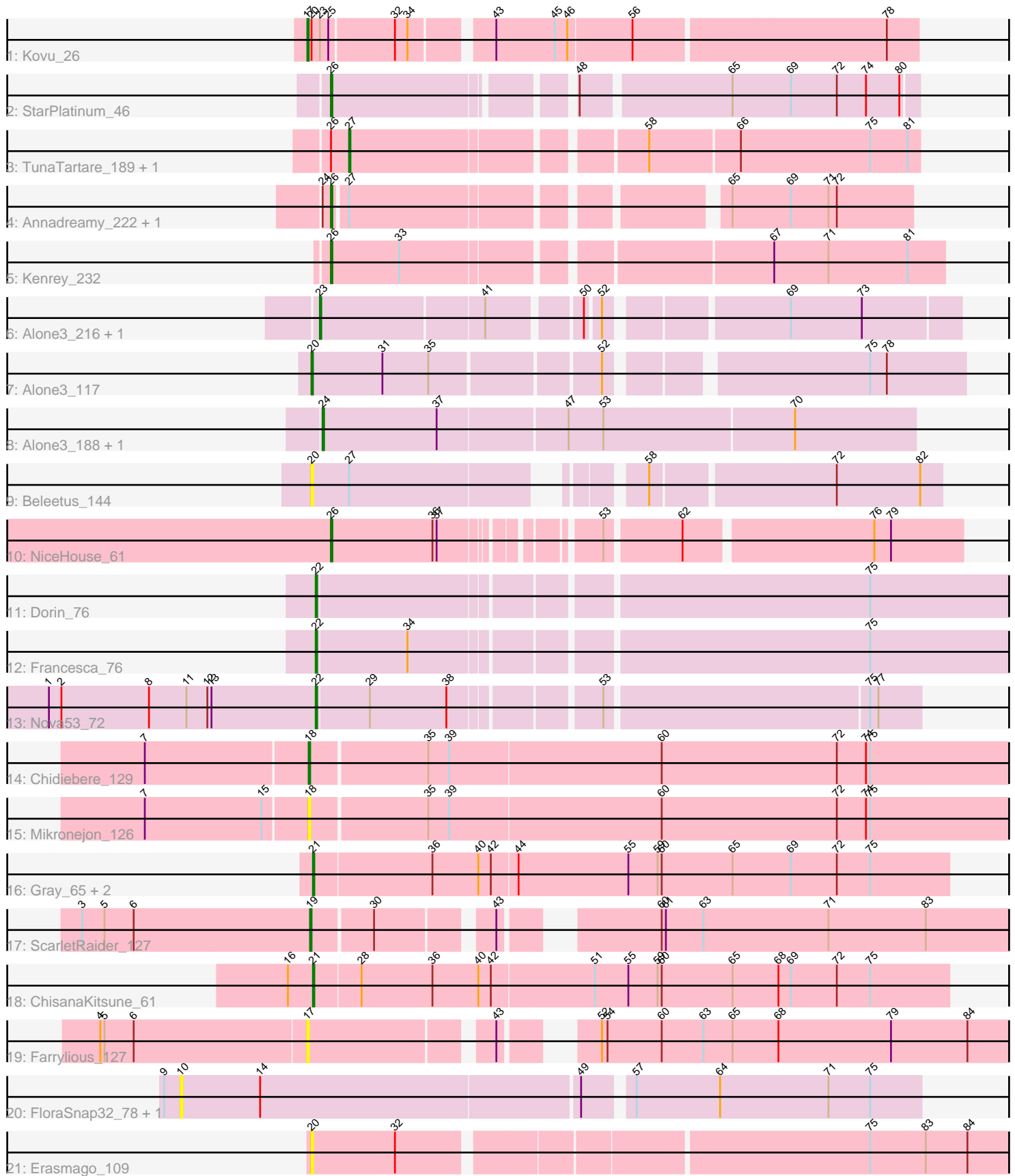


Pham 280761



Note: Tracks are now grouped by subcluster and scaled. Switching in subcluster is indicated by changes in track color. Track scale is now set by default to display the region 30 bp upstream of start 1 to 30 bp downstream of the last possible start. If this default region is judged to be packed too tightly with annotated starts, the track will be further scaled to only show that region of the ORF with annotated starts. This action will be indicated by adding "Zoomed" to the title. For starts, yellow indicates the location of called starts comprised solely of Glimmer/GeneMark auto-annotations, green indicates the location of called starts with at least 1 manual gene annotation.

Pham 280761 Report

This analysis was run 02/07/26 on database version 634.

Pham number 280761 has 28 members, 6 are drafts.

Phages represented in each track:

- Track 1 : Kovu_26
- Track 2 : StarPlatinum_46
- Track 3 : TunaTartare_189, Sham_181
- Track 4 : Annadreamy_222, Limpid_229
- Track 5 : Kenrey_232
- Track 6 : Alone3_216, Talos_215
- Track 7 : Alone3_117
- Track 8 : Alone3_188, Talos_188
- Track 9 : Beleetus_144
- Track 10 : NiceHouse_61
- Track 11 : Dorin_76
- Track 12 : Francesca_76
- Track 13 : Nova53_72
- Track 14 : Chidiebere_129
- Track 15 : Mikronejon_126
- Track 16 : Gray_65, Chidiebere_65, Kabocha_66
- Track 17 : ScarletRaider_127
- Track 18 : ChisanaKitsune_61
- Track 19 : Farrylious_127
- Track 20 : FloraSnap32_78, Patbob_79
- Track 21 : Erasmago_109

Summary of Final Annotations (See graph section above for start numbers):

The start number called the most often in the published annotations is 26, it was called in 5 of the 22 non-draft genes in the pham.

Genes that call this "Most Annotated" start:

- Annadreamy_222, Kenrey_232, Limpid_229, NiceHouse_61, StarPlatinum_46,

Genes that have the "Most Annotated" start but do not call it:

- Sham_181, TunaTartare_189,

Genes that do not have the "Most Annotated" start:

- Alone3_117, Alone3_188, Alone3_216, Beleetus_144, Chidiebere_129, Chidiebere_65, ChisanaKitsune_61, Dorin_76, Erasmago_109, Farrylous_127, FloraSnap32_78, Francesca_76, Gray_65, Kabocha_66, Kovu_26, Mikronejon_126, Nova53_72, Patbob_79, ScarletRaider_127, Talos_188, Talos_215,

Summary by start number:

Start 10:

- Found in 2 of 28 (7.1%) of genes in pham
- No Manual Annotations of this start.
- Called 100.0% of time when present
- Phage (with cluster) where this start called: FloraSnap32_78 (FC), Patbob_79 (FC),

Start 17:

- Found in 2 of 28 (7.1%) of genes in pham
- Manual Annotations of this start: 1 of 22
- Called 100.0% of time when present
- Phage (with cluster) where this start called: Farrylous_127 (DQ), Kovu_26 (AL),

Start 18:

- Found in 2 of 28 (7.1%) of genes in pham
- Manual Annotations of this start: 1 of 22
- Called 100.0% of time when present
- Phage (with cluster) where this start called: Chidiebere_129 (DQ), Mikronejon_126 (DQ),

Start 19:

- Found in 1 of 28 (3.6%) of genes in pham
- Manual Annotations of this start: 1 of 22
- Called 100.0% of time when present
- Phage (with cluster) where this start called: ScarletRaider_127 (DQ),

Start 20:

- Found in 4 of 28 (14.3%) of genes in pham
- Manual Annotations of this start: 1 of 22
- Called 75.0% of time when present
- Phage (with cluster) where this start called: Alone3_117 (BS), Beleetus_144 (BS), Erasmago_109 (GD2),

Start 21:

- Found in 4 of 28 (14.3%) of genes in pham
- Manual Annotations of this start: 4 of 22
- Called 100.0% of time when present
- Phage (with cluster) where this start called: Chidiebere_65 (DQ), ChisanaKitsune_61 (DQ), Gray_65 (DQ), Kabocha_66 (DQ),

Start 22:

- Found in 3 of 28 (10.7%) of genes in pham
- Manual Annotations of this start: 3 of 22
- Called 100.0% of time when present
- Phage (with cluster) where this start called: Dorin_76 (CG), Francesca_76 (CG), Nova53_72 (CG),

Start 23:

- Found in 3 of 28 (10.7%) of genes in pham
- Manual Annotations of this start: 2 of 22
- Called 66.7% of time when present
- Phage (with cluster) where this start called: Alone3_216 (BS), Talos_215 (BS),

Start 24:

- Found in 4 of 28 (14.3%) of genes in pham
- Manual Annotations of this start: 2 of 22
- Called 50.0% of time when present
- Phage (with cluster) where this start called: Alone3_188 (BS), Talos_188 (BS),

Start 26:

- Found in 7 of 28 (25.0%) of genes in pham
- Manual Annotations of this start: 5 of 22
- Called 71.4% of time when present
- Phage (with cluster) where this start called: Annadreamy_222 (BK1), Kenrey_232 (BK1), Limpid_229 (BK1), NiceHouse_61 (CE), StarPlatinum_46 (BE2),

Start 27:

- Found in 5 of 28 (17.9%) of genes in pham
- Manual Annotations of this start: 2 of 22
- Called 40.0% of time when present
- Phage (with cluster) where this start called: Sham_181 (BK1), TunaTartare_189 (BK1),

Summary by clusters:

There are 9 clusters represented in this pham: GD2, CG, AL, CE, FC, BK1, BS, BE2, DQ,

Info for manual annotations of cluster AL:

- Start number 17 was manually annotated 1 time for cluster AL.

Info for manual annotations of cluster BE2:

- Start number 26 was manually annotated 1 time for cluster BE2.

Info for manual annotations of cluster BK1:

- Start number 26 was manually annotated 3 times for cluster BK1.
- Start number 27 was manually annotated 2 times for cluster BK1.

Info for manual annotations of cluster BS:

- Start number 20 was manually annotated 1 time for cluster BS.
- Start number 23 was manually annotated 2 times for cluster BS.
- Start number 24 was manually annotated 2 times for cluster BS.

Info for manual annotations of cluster CE:

- Start number 26 was manually annotated 1 time for cluster CE.

Info for manual annotations of cluster CG:

- Start number 22 was manually annotated 3 times for cluster CG.

Info for manual annotations of cluster DQ:

- Start number 18 was manually annotated 1 time for cluster DQ.
- Start number 19 was manually annotated 1 time for cluster DQ.
- Start number 21 was manually annotated 4 times for cluster DQ.

Gene Information:

Gene: Alone3_216 Start: 111609, Stop: 111190, Start Num: 23

Candidate Starts for Alone3_216:

(Start: 23 @111609 has 2 MA's), (41, 111495), (50, 111435), (52, 111426), (69, 111309), (73, 111258),

Gene: Alone3_117 Start: 62982, Stop: 63413, Start Num: 20

Candidate Starts for Alone3_117:

(Start: 20 @62982 has 1 MA's), (31, 63033), (35, 63066), (52, 63177), (75, 63345), (78, 63357),

Gene: Alone3_188 Start: 97401, Stop: 96985, Start Num: 24

Candidate Starts for Alone3_188:

(Start: 24 @97401 has 2 MA's), (37, 97320), (47, 97230), (53, 97206), (70, 97071),

Gene: Annadreamy_222 Start: 109759, Stop: 110133, Start Num: 26

Candidate Starts for Annadreamy_222:

(Start: 24 @109753 has 2 MA's), (Start: 26 @109759 has 5 MA's), (Start: 27 @109768 has 2 MA's), (65, 110005), (69, 110047), (71, 110074), (72, 110080),

Gene: Beleetus_144 Start: 78377, Stop: 78778, Start Num: 20

Candidate Starts for Beleetus_144:

(Start: 20 @78377 has 1 MA's), (Start: 27 @78404 has 2 MA's), (58, 78578), (72, 78704), (82, 78764),

Gene: Chidiebere_129 Start: 90897, Stop: 90346, Start Num: 18

Candidate Starts for Chidiebere_129:

(7, 91011), (Start: 18 @90897 has 1 MA's), (35, 90816), (39, 90801), (60, 90651), (72, 90525), (74, 90504), (75, 90501),

Gene: Chidiebere_65 Start: 51821, Stop: 52273, Start Num: 21

Candidate Starts for Chidiebere_65:

(Start: 21 @51821 has 4 MA's), (36, 51905), (40, 51938), (42, 51947), (44, 51965), (55, 52043), (59, 52064), (60, 52067), (65, 52118), (69, 52160), (72, 52193), (75, 52217),

Gene: ChisanaKitsune_61 Start: 50595, Stop: 51047, Start Num: 21

Candidate Starts for ChisanaKitsune_61:

(16, 50577), (Start: 21 @50595 has 4 MA's), (28, 50628), (36, 50679), (40, 50712), (42, 50721), (51, 50793), (55, 50817), (59, 50838), (60, 50841), (65, 50892), (68, 50925), (69, 50934), (72, 50967), (75, 50991),

Gene: Dorin_76 Start: 59997, Stop: 60470, Start Num: 22

Candidate Starts for Dorin_76:

(Start: 22 @59997 has 3 MA's), (75, 60369),

Gene: Erasmago_109 Start: 78875, Stop: 79378, Start Num: 20

Candidate Starts for Erasmago_109:

(Start: 20 @78875 has 1 MA's), (32, 78935), (75, 79253), (83, 79292), (84, 79322),

Gene: Farrylious_127 Start: 89655, Stop: 89143, Start Num: 17

Candidate Starts for Farrylious_127:

(4, 89802), (5, 89799), (6, 89778), (Start: 17 @89655 has 1 MA's), (43, 89535), (52, 89490), (54, 89487), (60, 89448), (63, 89418), (65, 89397), (68, 89364), (79, 89283), (84, 89229),

Gene: FloraSnap32_78 Start: 42949, Stop: 42437, Start Num: 10

Candidate Starts for FloraSnap32_78:

(9, 42961), (10, 42949), (14, 42892), (49, 42670), (57, 42640), (64, 42580), (71, 42502), (75, 42472),

Gene: Francesca_76 Start: 60735, Stop: 61208, Start Num: 22

Candidate Starts for Francesca_76:

(Start: 22 @60735 has 3 MA's), (34, 60798), (75, 61107),

Gene: Gray_65 Start: 51821, Stop: 52273, Start Num: 21

Candidate Starts for Gray_65:

(Start: 21 @51821 has 4 MA's), (36, 51905), (40, 51938), (42, 51947), (44, 51965), (55, 52043), (59, 52064), (60, 52067), (65, 52118), (69, 52160), (72, 52193), (75, 52217),

Gene: Kabocha_66 Start: 52633, Stop: 53085, Start Num: 21

Candidate Starts for Kabocha_66:

(Start: 21 @52633 has 4 MA's), (36, 52717), (40, 52750), (42, 52759), (44, 52777), (55, 52855), (59, 52876), (60, 52879), (65, 52930), (69, 52972), (72, 53005), (75, 53029),

Gene: Kenrey_232 Start: 111193, Stop: 111606, Start Num: 26

Candidate Starts for Kenrey_232:

(Start: 26 @111193 has 5 MA's), (33, 111241), (67, 111484), (71, 111523), (81, 111580),

Gene: Kovu_26 Start: 17736, Stop: 17326, Start Num: 17

Candidate Starts for Kovu_26:

(Start: 17 @17736 has 1 MA's), (Start: 20 @17733 has 1 MA's), (Start: 23 @17727 has 2 MA's), (25, 17721), (32, 17676), (34, 17667), (43, 17616), (45, 17574), (46, 17565), (56, 17520), (78, 17346),

Gene: Limpid_229 Start: 115072, Stop: 115446, Start Num: 26

Candidate Starts for Limpid_229:

(Start: 24 @115066 has 2 MA's), (Start: 26 @115072 has 5 MA's), (Start: 27 @115081 has 2 MA's), (65, 115318), (69, 115360), (71, 115387), (72, 115393),

Gene: Mikronejon_126 Start: 90250, Stop: 89696, Start Num: 18

Candidate Starts for Mikronejon_126:

(7, 90364), (15, 90280), (Start: 18 @90250 has 1 MA's), (35, 90169), (39, 90154), (60, 90004), (72, 89878), (74, 89857), (75, 89854),

Gene: NiceHouse_61 Start: 34862, Stop: 35269, Start Num: 26

Candidate Starts for NiceHouse_61:

(Start: 26 @34862 has 5 MA's), (36, 34934), (37, 34937), (53, 35027), (62, 35078), (76, 35207), (79, 35219),

Gene: Nova53_72 Start: 59567, Stop: 59971, Start Num: 22

Candidate Starts for Nova53_72:

(1, 59375), (2, 59384), (8, 59447), (11, 59474), (12, 59489), (13, 59492), (Start: 22 @59567 has 3 MA's), (29, 59603), (38, 59657), (53, 59753), (75, 59936), (77, 59942),

Gene: Patbob_79 Start: 44134, Stop: 43622, Start Num: 10

Candidate Starts for Patbob_79:

(9, 44146), (10, 44134), (14, 44077), (49, 43855), (57, 43825), (64, 43765), (71, 43687), (75, 43657),

Gene: ScarletRaider_127 Start: 92635, Stop: 92135, Start Num: 19

Candidate Starts for ScarletRaider_127:

(3, 92797), (5, 92782), (6, 92761), (Start: 19 @92635 has 1 MA's), (30, 92593), (43, 92521), (60, 92434), (61, 92431), (63, 92404), (71, 92314), (83, 92245),

Gene: Sham_181 Start: 98652, Stop: 99035, Start Num: 27

Candidate Starts for Sham_181:

(Start: 26 @98640 has 5 MA's), (Start: 27 @98652 has 2 MA's), (58, 98844), (66, 98907), (75, 99000), (81, 99027),

Gene: StarPlatinum_46 Start: 22656, Stop: 23042, Start Num: 26

Candidate Starts for StarPlatinum_46:

(Start: 26 @22656 has 5 MA's), (48, 22809), (65, 22911), (69, 22953), (72, 22986), (74, 23007), (80, 23031),

Gene: Talos_215 Start: 109729, Stop: 109310, Start Num: 23

Candidate Starts for Talos_215:

(Start: 23 @109729 has 2 MA's), (41, 109615), (50, 109555), (52, 109546), (69, 109429), (73, 109378),

Gene: Talos_188 Start: 95931, Stop: 95515, Start Num: 24

Candidate Starts for Talos_188:

(Start: 24 @95931 has 2 MA's), (37, 95850), (47, 95760), (53, 95736), (70, 95601),

Gene: TunaTartare_189 Start: 100701, Stop: 101084, Start Num: 27

Candidate Starts for TunaTartare_189:

(Start: 26 @100689 has 5 MA's), (Start: 27 @100701 has 2 MA's), (58, 100893), (66, 100956), (75, 101049), (81, 101076),