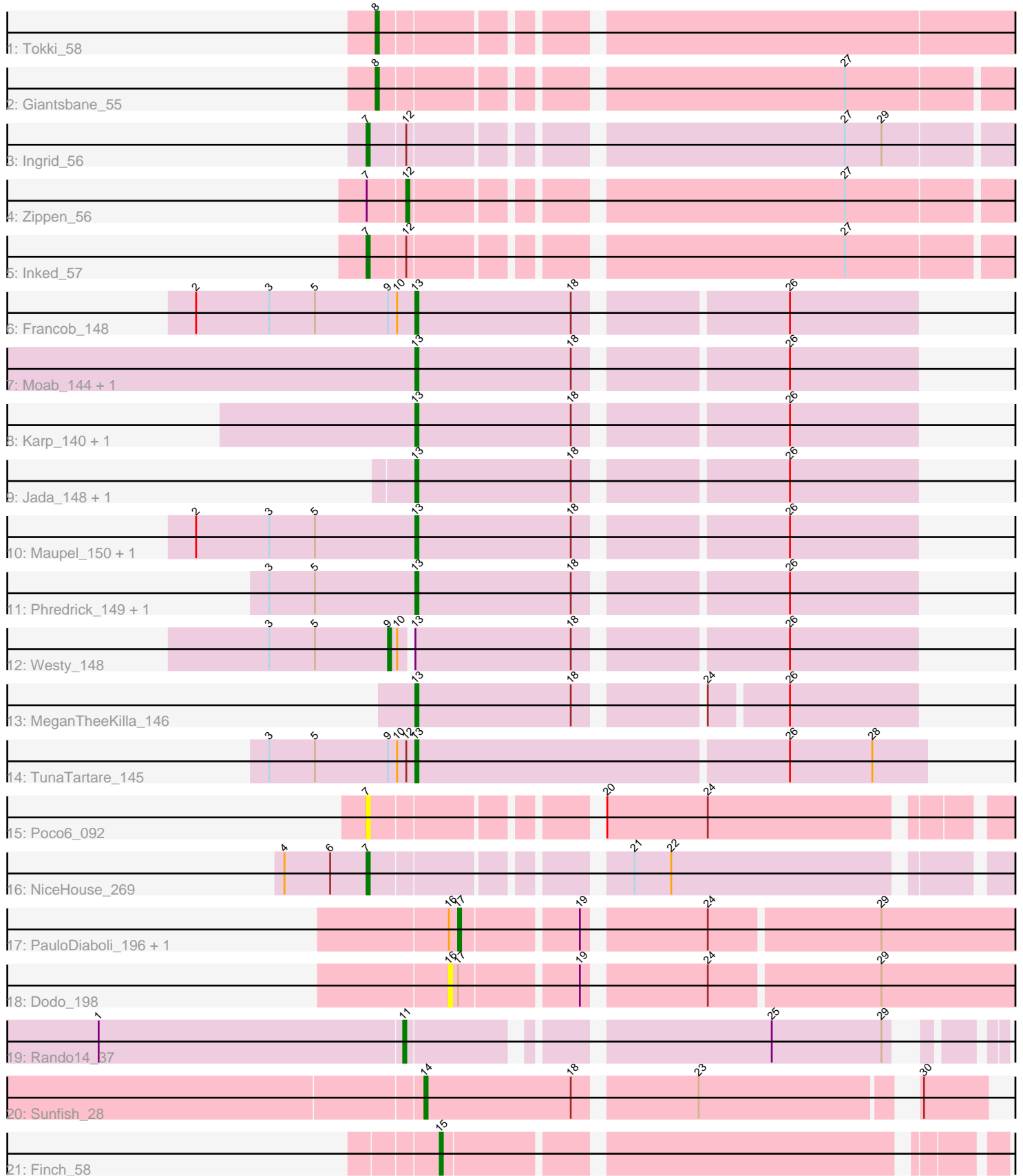


# Pham 280773



Note: Tracks are now grouped by subcluster and scaled. Switching in subcluster is indicated by changes in track color. Track scale is now set by default to display the region 30 bp upstream of start 1 to 30 bp downstream of the last possible start. If this default region is judged to be packed too tightly with annotated starts, the track will be further scaled to only show that region of the ORF with annotated starts. This action will be indicated by adding "Zoomed" to the title. For starts, yellow indicates the location of called starts comprised solely of Glimmer/GeneMark auto-annotations, green indicates the location of called starts with at least 1 manual gene annotation.

## Pham 280773 Report

This analysis was run 02/07/26 on database version 634.

Pham number 280773 has 27 members, 4 are drafts.

Phages represented in each track:

- Track 1 : Tokki\_58
- Track 2 : Giantsbane\_55
- Track 3 : Ingrid\_56
- Track 4 : Zippen\_56
- Track 5 : Inked\_57
- Track 6 : Francob\_148
- Track 7 : Moab\_144, Patelgo\_146
- Track 8 : Karp\_140, Belfort\_145
- Track 9 : Jada\_148, DeluluLabubu\_153
- Track 10 : Maupel\_150, Emma1919\_150
- Track 11 : Phredrick\_149, Kenrey\_152
- Track 12 : Westy\_148
- Track 13 : MeganTheeKilla\_146
- Track 14 : TunaTartare\_145
- Track 15 : Poco6\_092
- Track 16 : NiceHouse\_269
- Track 17 : PauloDiaboli\_196, A3Wally\_197
- Track 18 : Dodo\_198
- Track 19 : Rando14\_37
- Track 20 : Sunfish\_28
- Track 21 : Finch\_58

### ***Summary of Final Annotations (See graph section above for start numbers):***

The start number called the most often in the published annotations is 13, it was called in 11 of the 23 non-draft genes in the pham.

Genes that call this "Most Annotated" start:

- Belfort\_145, DeluluLabubu\_153, Emma1919\_150, Francob\_148, Jada\_148, Karp\_140, Kenrey\_152, Maupel\_150, MeganTheeKilla\_146, Moab\_144, Patelgo\_146, Phredrick\_149, TunaTartare\_145,

Genes that have the "Most Annotated" start but do not call it:

- Westy\_148,

Genes that do not have the "Most Annotated" start:

- A3Wally\_197, Dodo\_198, Finch\_58, Giantsbane\_55, Ingrid\_56, Inked\_57, NiceHouse\_269, PauloDiaboli\_196, Poco6\_092, Rando14\_37, Sunfish\_28, Tokki\_58, Zippen\_56,

### Summary by start number:

Start 7:

- Found in 5 of 27 ( 18.5% ) of genes in pham
- Manual Annotations of this start: 3 of 23
- Called 80.0% of time when present
- Phage (with cluster) where this start called: Ingrid\_56 (AU3), Inked\_57 (AU7), NiceHouse\_269 (CE), Poco6\_092 (CC),

Start 8:

- Found in 2 of 27 ( 7.4% ) of genes in pham
- Manual Annotations of this start: 2 of 23
- Called 100.0% of time when present
- Phage (with cluster) where this start called: Giantsbane\_55 (AU2), Tokki\_58 (AU2),

Start 9:

- Found in 3 of 27 ( 11.1% ) of genes in pham
- Manual Annotations of this start: 1 of 23
- Called 33.3% of time when present
- Phage (with cluster) where this start called: Westy\_148 (BK1),

Start 11:

- Found in 1 of 27 ( 3.7% ) of genes in pham
- Manual Annotations of this start: 1 of 23
- Called 100.0% of time when present
- Phage (with cluster) where this start called: Rando14\_37 (K5),

Start 12:

- Found in 4 of 27 ( 14.8% ) of genes in pham
- Manual Annotations of this start: 1 of 23
- Called 25.0% of time when present
- Phage (with cluster) where this start called: Zippen\_56 (AU7),

Start 13:

- Found in 14 of 27 ( 51.9% ) of genes in pham
- Manual Annotations of this start: 11 of 23
- Called 92.9% of time when present
- Phage (with cluster) where this start called: Belfort\_145 (BK1), DeluluLabubu\_153 (BK1), Emma1919\_150 (BK1), Francob\_148 (BK1), Jada\_148 (BK1), Karp\_140 (BK1), Kenrey\_152 (BK1), Maupel\_150 (BK1), MeganTheeKilla\_146 (BK1), Moab\_144 (BK1), Patelgo\_146 (BK1), Phredrick\_149 (BK1), TunaTartare\_145 (BK1),

Start 14:

- Found in 1 of 27 ( 3.7% ) of genes in pham
- Manual Annotations of this start: 1 of 23
- Called 100.0% of time when present
- Phage (with cluster) where this start called: Sunfish\_28 (singleton),

Start 15:

- Found in 1 of 27 ( 3.7% ) of genes in pham
- Manual Annotations of this start: 1 of 23
- Called 100.0% of time when present
- Phage (with cluster) where this start called: Finch\_58 (singleton),

Start 16:

- Found in 3 of 27 ( 11.1% ) of genes in pham
- No Manual Annotations of this start.
- Called 33.3% of time when present
- Phage (with cluster) where this start called: Dodo\_198 (GD1),

Start 17:

- Found in 3 of 27 ( 11.1% ) of genes in pham
- Manual Annotations of this start: 2 of 23
- Called 66.7% of time when present
- Phage (with cluster) where this start called: A3Wally\_197 (GD1), PauloDiaboli\_196 (GD1),

### **Summary by clusters:**

There are 9 clusters represented in this pham: GD1, singleton, AU7, CC, CE, AU3, AU2, BK1, K5,

Info for manual annotations of cluster AU2:

- Start number 8 was manually annotated 2 times for cluster AU2.

Info for manual annotations of cluster AU3:

- Start number 7 was manually annotated 1 time for cluster AU3.

Info for manual annotations of cluster AU7:

- Start number 7 was manually annotated 1 time for cluster AU7.
- Start number 12 was manually annotated 1 time for cluster AU7.

Info for manual annotations of cluster BK1:

- Start number 9 was manually annotated 1 time for cluster BK1.
- Start number 13 was manually annotated 11 times for cluster BK1.

Info for manual annotations of cluster CE:

- Start number 7 was manually annotated 1 time for cluster CE.

Info for manual annotations of cluster GD1:

- Start number 17 was manually annotated 2 times for cluster GD1.

Info for manual annotations of cluster K5:

- Start number 11 was manually annotated 1 time for cluster K5.

### **Gene Information:**

Gene: A3Wally\_197 Start: 109106, Stop: 109285, Start Num: 17  
Candidate Starts for A3Wally\_197:  
(16, 109103), (Start: 17 @109106 has 2 MA's), (19, 109142), (24, 109178), (29, 109232),

Gene: Belfort\_145 Start: 82737, Stop: 82892, Start Num: 13  
Candidate Starts for Belfort\_145:  
(Start: 13 @82737 has 11 MA's), (18, 82788), (26, 82851),

Gene: DeluluLabubu\_153 Start: 83559, Stop: 83717, Start Num: 13  
Candidate Starts for DeluluLabubu\_153:  
(Start: 13 @83559 has 11 MA's), (18, 83610), (26, 83673),

Gene: Dodo\_198 Start: 108714, Stop: 108896, Start Num: 16  
Candidate Starts for Dodo\_198:  
(16, 108714), (Start: 17 @108717 has 2 MA's), (19, 108753), (24, 108789), (29, 108843),

Gene: Emma1919\_150 Start: 82354, Stop: 82509, Start Num: 13  
Candidate Starts for Emma1919\_150:  
(2, 82285), (3, 82309), (5, 82324), (Start: 13 @82354 has 11 MA's), (18, 82405), (26, 82468),

Gene: Finch\_58 Start: 47919, Stop: 48083, Start Num: 15  
Candidate Starts for Finch\_58:  
(Start: 15 @47919 has 1 MA's),

Gene: Francob\_148 Start: 82862, Stop: 83017, Start Num: 13  
Candidate Starts for Francob\_148:  
(2, 82793), (3, 82817), (5, 82832), (Start: 9 @82856 has 1 MA's), (10, 82859), (Start: 13 @82862 has 11 MA's), (18, 82913), (26, 82976),

Gene: Giantsbane\_55 Start: 36034, Stop: 36225, Start Num: 8  
Candidate Starts for Giantsbane\_55:  
(Start: 8 @36034 has 2 MA's), (27, 36172),

Gene: Ingrid\_56 Start: 36844, Stop: 37038, Start Num: 7  
Candidate Starts for Ingrid\_56:  
(Start: 7 @36844 has 3 MA's), (Start: 12 @36856 has 1 MA's), (27, 36985), (29, 36997),

Gene: Inked\_57 Start: 37966, Stop: 38160, Start Num: 7  
Candidate Starts for Inked\_57:  
(Start: 7 @37966 has 3 MA's), (Start: 12 @37978 has 1 MA's), (27, 38107),

Gene: Jada\_148 Start: 82145, Stop: 82300, Start Num: 13  
Candidate Starts for Jada\_148:  
(Start: 13 @82145 has 11 MA's), (18, 82196), (26, 82259),

Gene: Karp\_140 Start: 82164, Stop: 82319, Start Num: 13  
Candidate Starts for Karp\_140:  
(Start: 13 @82164 has 11 MA's), (18, 82215), (26, 82278),

Gene: Kenrey\_152 Start: 83476, Stop: 83631, Start Num: 13  
Candidate Starts for Kenrey\_152:  
(3, 83431), (5, 83446), (Start: 13 @83476 has 11 MA's), (18, 83527), (26, 83590),

Gene: Maupel\_150 Start: 82316, Stop: 82471, Start Num: 13

Candidate Starts for Maupel\_150:

(2, 82247), (3, 82271), (5, 82286), (Start: 13 @82316 has 11 MA's), (18, 82367), (26, 82430),

Gene: MeganTheeKilla\_146 Start: 81670, Stop: 81822, Start Num: 13

Candidate Starts for MeganTheeKilla\_146:

(Start: 13 @81670 has 11 MA's), (18, 81721), (24, 81757), (26, 81781),

Gene: Moab\_144 Start: 83836, Stop: 83991, Start Num: 13

Candidate Starts for Moab\_144:

(Start: 13 @83836 has 11 MA's), (18, 83887), (26, 83950),

Gene: NiceHouse\_269 Start: 134061, Stop: 134252, Start Num: 7

Candidate Starts for NiceHouse\_269:

(4, 134034), (6, 134049), (Start: 7 @134061 has 3 MA's), (21, 134133), (22, 134145),

Gene: Patelgo\_146 Start: 84528, Stop: 84683, Start Num: 13

Candidate Starts for Patelgo\_146:

(Start: 13 @84528 has 11 MA's), (18, 84579), (26, 84642),

Gene: PauloDiaboli\_196 Start: 107152, Stop: 107331, Start Num: 17

Candidate Starts for PauloDiaboli\_196:

(16, 107149), (Start: 17 @107152 has 2 MA's), (19, 107188), (24, 107224), (29, 107278),

Gene: Phredrick\_149 Start: 81811, Stop: 81966, Start Num: 13

Candidate Starts for Phredrick\_149:

(3, 81766), (5, 81781), (Start: 13 @81811 has 11 MA's), (18, 81862), (26, 81925),

Gene: Poco6\_092 Start: 48067, Stop: 48252, Start Num: 7

Candidate Starts for Poco6\_092:

(Start: 7 @48067 has 3 MA's), (20, 48130), (24, 48163),

Gene: Rando14\_37 Start: 29193, Stop: 29357, Start Num: 11

Candidate Starts for Rando14\_37:

(1, 29094), (Start: 11 @29193 has 1 MA's), (25, 29298), (29, 29334),

Gene: Sunfish\_28 Start: 13980, Stop: 14147, Start Num: 14

Candidate Starts for Sunfish\_28:

(Start: 14 @13980 has 1 MA's), (18, 14028), (23, 14064), (30, 14127),

Gene: Tokki\_58 Start: 37146, Stop: 37340, Start Num: 8

Candidate Starts for Tokki\_58:

(Start: 8 @37146 has 2 MA's),

Gene: TunaTartare\_145 Start: 84538, Stop: 84702, Start Num: 13

Candidate Starts for TunaTartare\_145:

(3, 84490), (5, 84505), (Start: 9 @84529 has 1 MA's), (10, 84532), (Start: 12 @84535 has 1 MA's),  
(Start: 13 @84538 has 11 MA's), (26, 84658), (28, 84685),

Gene: Westy\_148 Start: 83690, Stop: 83851, Start Num: 9

Candidate Starts for Westy\_148:

(3, 83651), (5, 83666), (Start: 9 @83690 has 1 MA's), (10, 83693), (Start: 13 @83696 has 11 MA's),  
(18, 83747), (26, 83810),

Gene: Zippen\_56 Start: 37678, Stop: 37860, Start Num: 12

Candidate Starts for Zippen\_56:

(Start: 7 @37666 has 3 MA's), (Start: 12 @37678 has 1 MA's), (27, 37807),