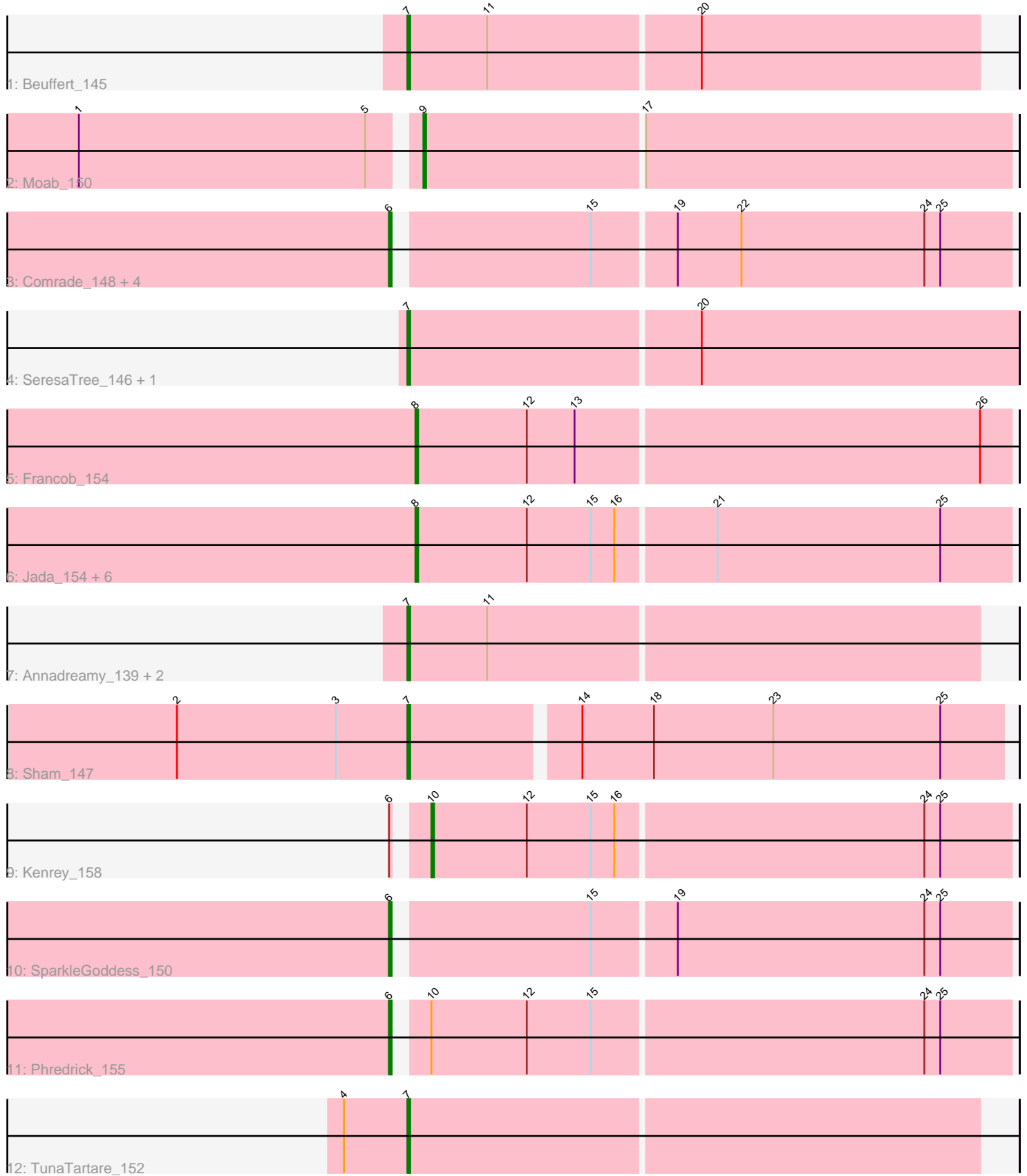


## Pham 280811



Note: Tracks are now grouped by subcluster and scaled. Switching in subcluster is indicated by changes in track color. Track scale is now set by default to display the region 30 bp upstream of start 1 to 30 bp downstream of the last possible start. If this default region is judged to be packed too tightly with annotated starts, the track will be further scaled to only show that region of the ORF with annotated starts. This action will be indicated by adding "Zoomed" to the title. For starts, yellow indicates the location of called starts comprised solely of Glimmer/GeneMark auto-annotations, green indicates the location of called starts with at least 1 manual gene annotation.

## Pham 280811 Report

This analysis was run 02/07/26 on database version 634.

Pham number 280811 has 25 members, 3 are drafts.

Phages represented in each track:

- Track 1 : Beuffert\_145
- Track 2 : Moab\_150
- Track 3 : Comrade\_148, Karp\_145, Westy\_153, Belfort\_151, Stigma\_149
- Track 4 : SeresaTree\_146, Faust\_145
- Track 5 : Francob\_154
- Track 6 : Jada\_154, Maupel\_156, Forrest\_157, Emma1919\_156, Gilson\_155, DeluluLabubu\_160, MeganTheeKilla\_152
- Track 7 : Annadreamy\_139, Blueeyedbeauty\_148, Limpid\_146
- Track 8 : Sham\_147
- Track 9 : Kenrey\_158
- Track 10 : SparkleGoddess\_150
- Track 11 : Phredrick\_155
- Track 12 : TunaTartare\_152

### ***Summary of Final Annotations (See graph section above for start numbers):***

The start number called the most often in the published annotations is 6, it was called in 7 of the 22 non-draft genes in the pham.

Genes that call this "Most Annotated" start:

- Belfort\_151, Comrade\_148, Karp\_145, Phredrick\_155, SparkleGoddess\_150, Stigma\_149, Westy\_153,

Genes that have the "Most Annotated" start but do not call it:

- Kenrey\_158,

Genes that do not have the "Most Annotated" start:

- Annadreamy\_139, Beuffert\_145, Blueeyedbeauty\_148, DeluluLabubu\_160, Emma1919\_156, Faust\_145, Forrest\_157, Francob\_154, Gilson\_155, Jada\_154, Limpid\_146, Maupel\_156, MeganTheeKilla\_152, Moab\_150, SeresaTree\_146, Sham\_147, TunaTartare\_152,

### **Summary by start number:**

Start 6:

- Found in 8 of 25 ( 32.0% ) of genes in pham
- Manual Annotations of this start: 7 of 22
- Called 87.5% of time when present
- Phage (with cluster) where this start called: Belfort\_151 (BK1), Comrade\_148 (BK1), Karp\_145 (BK1), Phredrick\_155 (BK1), SparkleGoddess\_150 (BK1), Stigma\_149 (BK1), Westy\_153 (BK1),

Start 7:

- Found in 8 of 25 ( 32.0% ) of genes in pham
- Manual Annotations of this start: 7 of 22
- Called 100.0% of time when present
- Phage (with cluster) where this start called: Annadreamy\_139 (BK1), Beuffert\_145 (BK1), Blueeyedbeauty\_148 (BK1), Faust\_145 (BK1), Limpid\_146 (BK1), SeresaTree\_146 (BK1), Sham\_147 (BK1), TunaTartare\_152 (BK1),

Start 8:

- Found in 8 of 25 ( 32.0% ) of genes in pham
- Manual Annotations of this start: 6 of 22
- Called 100.0% of time when present
- Phage (with cluster) where this start called: DeluluLabubu\_160 (BK1), Emma1919\_156 (BK1), Forrest\_157 (BK1), Francob\_154 (BK1), Gilson\_155 (BK1), Jada\_154 (BK1), Maupel\_156 (BK1), MeganTheeKilla\_152 (BK1),

Start 9:

- Found in 1 of 25 ( 4.0% ) of genes in pham
- Manual Annotations of this start: 1 of 22
- Called 100.0% of time when present
- Phage (with cluster) where this start called: Moab\_150 (BK1),

Start 10:

- Found in 2 of 25 ( 8.0% ) of genes in pham
- Manual Annotations of this start: 1 of 22
- Called 50.0% of time when present
- Phage (with cluster) where this start called: Kenrey\_158 (BK1),

**Summary by clusters:**

There is one cluster represented in this pham: BK1

Info for manual annotations of cluster BK1:

- Start number 6 was manually annotated 7 times for cluster BK1.
- Start number 7 was manually annotated 7 times for cluster BK1.
- Start number 8 was manually annotated 6 times for cluster BK1.
- Start number 9 was manually annotated 1 time for cluster BK1.
- Start number 10 was manually annotated 1 time for cluster BK1.

**Gene Information:**

Gene: Annadreamy\_139 Start: 79179, Stop: 79391, Start Num: 7

Candidate Starts for Annadreamy\_139:

(Start: 7 @79179 has 7 MA's), (11, 79209),

Gene: Belfort\_151 Start: 84987, Stop: 85211, Start Num: 6

Candidate Starts for Belfort\_151:

(Start: 6 @84987 has 7 MA's), (15, 85056), (19, 85086), (22, 85110), (24, 85179), (25, 85185),

Gene: Beuffert\_145 Start: 83733, Stop: 83945, Start Num: 7

Candidate Starts for Beuffert\_145:

(Start: 7 @83733 has 7 MA's), (11, 83763), (20, 83841),

Gene: Blueeyedbeauty\_148 Start: 83607, Stop: 83819, Start Num: 7

Candidate Starts for Blueeyedbeauty\_148:

(Start: 7 @83607 has 7 MA's), (11, 83637),

Gene: Comrade\_148 Start: 85186, Stop: 85410, Start Num: 6

Candidate Starts for Comrade\_148:

(Start: 6 @85186 has 7 MA's), (15, 85255), (19, 85285), (22, 85309), (24, 85378), (25, 85384),

Gene: DeluluLabubu\_160 Start: 86657, Stop: 86878, Start Num: 8

Candidate Starts for DeluluLabubu\_160:

(Start: 8 @86657 has 6 MA's), (12, 86699), (15, 86723), (16, 86732), (21, 86768), (25, 86852),

Gene: Emma1919\_156 Start: 84605, Stop: 84826, Start Num: 8

Candidate Starts for Emma1919\_156:

(Start: 8 @84605 has 6 MA's), (12, 84647), (15, 84671), (16, 84680), (21, 84716), (25, 84800),

Gene: Faust\_145 Start: 84581, Stop: 84808, Start Num: 7

Candidate Starts for Faust\_145:

(Start: 7 @84581 has 7 MA's), (20, 84689),

Gene: Forrest\_157 Start: 85699, Stop: 85920, Start Num: 8

Candidate Starts for Forrest\_157:

(Start: 8 @85699 has 6 MA's), (12, 85741), (15, 85765), (16, 85774), (21, 85810), (25, 85894),

Gene: Francob\_154 Start: 85123, Stop: 85344, Start Num: 8

Candidate Starts for Francob\_154:

(Start: 8 @85123 has 6 MA's), (12, 85165), (13, 85183), (26, 85333),

Gene: Gilson\_155 Start: 84567, Stop: 84788, Start Num: 8

Candidate Starts for Gilson\_155:

(Start: 8 @84567 has 6 MA's), (12, 84609), (15, 84633), (16, 84642), (21, 84678), (25, 84762),

Gene: Jada\_154 Start: 84396, Stop: 84617, Start Num: 8

Candidate Starts for Jada\_154:

(Start: 8 @84396 has 6 MA's), (12, 84438), (15, 84462), (16, 84471), (21, 84507), (25, 84591),

Gene: Karp\_145 Start: 84414, Stop: 84638, Start Num: 6

Candidate Starts for Karp\_145:

(Start: 6 @84414 has 7 MA's), (15, 84483), (19, 84513), (22, 84537), (24, 84606), (25, 84612),

Gene: Kenrey\_158 Start: 85728, Stop: 85943, Start Num: 10

Candidate Starts for Kenrey\_158:

(Start: 6 @85719 has 7 MA's), (Start: 10 @85728 has 1 MA's), (12, 85764), (15, 85788), (16, 85797), (24, 85911), (25, 85917),

Gene: Limpid\_146 Start: 84480, Stop: 84692, Start Num: 7

Candidate Starts for Limpid\_146:

(Start: 7 @84480 has 7 MA's), (11, 84510),

Gene: Maupel\_156 Start: 84567, Stop: 84788, Start Num: 8

Candidate Starts for Maupel\_156:

(Start: 8 @84567 has 6 MA's), (12, 84609), (15, 84633), (16, 84642), (21, 84678), (25, 84762),

Gene: MeganTheeKilla\_152 Start: 83918, Stop: 84139, Start Num: 8

Candidate Starts for MeganTheeKilla\_152:

(Start: 8 @83918 has 6 MA's), (12, 83960), (15, 83984), (16, 83993), (21, 84029), (25, 84113),

Gene: Moab\_150 Start: 86203, Stop: 86421, Start Num: 9

Candidate Starts for Moab\_150:

(1, 86080), (5, 86188), (Start: 9 @86203 has 1 MA's), (17, 86284),

Gene: Phredrick\_155 Start: 84063, Stop: 84287, Start Num: 6

Candidate Starts for Phredrick\_155:

(Start: 6 @84063 has 7 MA's), (Start: 10 @84072 has 1 MA's), (12, 84108), (15, 84132), (24, 84255), (25, 84261),

Gene: SeresaTree\_146 Start: 83963, Stop: 84190, Start Num: 7

Candidate Starts for SeresaTree\_146:

(Start: 7 @83963 has 7 MA's), (20, 84071),

Gene: Sham\_147 Start: 86459, Stop: 86677, Start Num: 7

Candidate Starts for Sham\_147:

(2, 86372), (3, 86432), (Start: 7 @86459 has 7 MA's), (14, 86519), (18, 86546), (23, 86591), (25, 86654),

Gene: SparkleGoddess\_150 Start: 85233, Stop: 85457, Start Num: 6

Candidate Starts for SparkleGoddess\_150:

(Start: 6 @85233 has 7 MA's), (15, 85302), (19, 85332), (24, 85425), (25, 85431),

Gene: Stigma\_149 Start: 85631, Stop: 85855, Start Num: 6

Candidate Starts for Stigma\_149:

(Start: 6 @85631 has 7 MA's), (15, 85700), (19, 85730), (22, 85754), (24, 85823), (25, 85829),

Gene: TunaTartare\_152 Start: 87717, Stop: 87929, Start Num: 7

Candidate Starts for TunaTartare\_152:

(4, 87693), (Start: 7 @87717 has 7 MA's),

Gene: Westy\_153 Start: 85946, Stop: 86170, Start Num: 6

Candidate Starts for Westy\_153:

(Start: 6 @85946 has 7 MA's), (15, 86015), (19, 86045), (22, 86069), (24, 86138), (25, 86144),