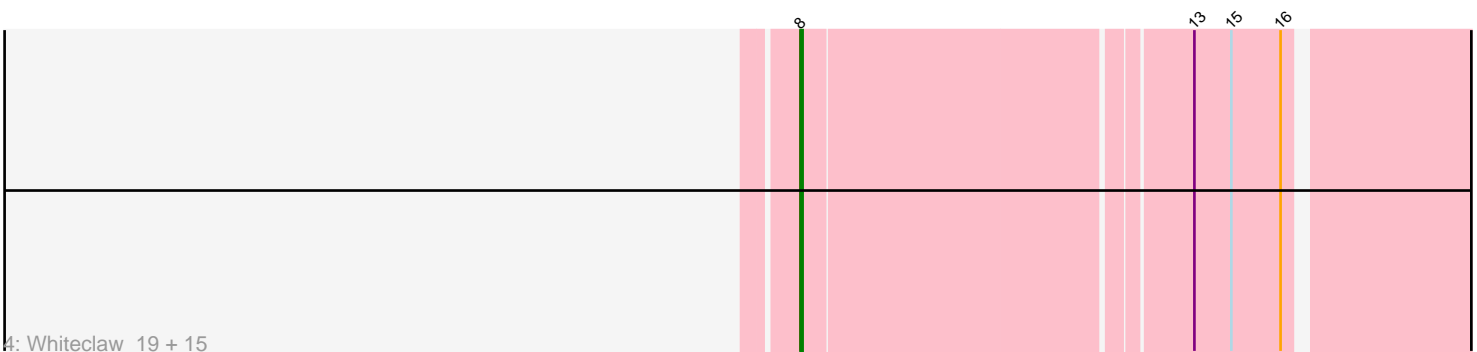
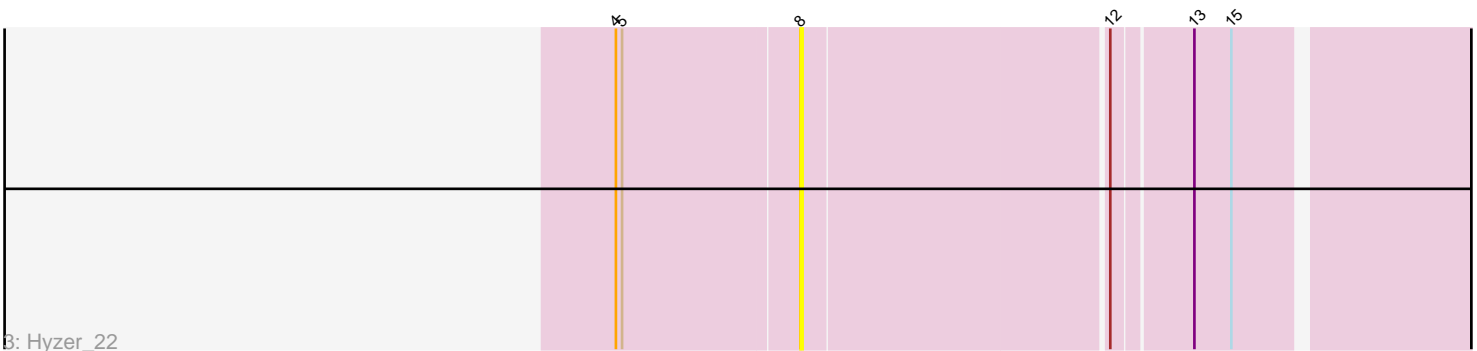
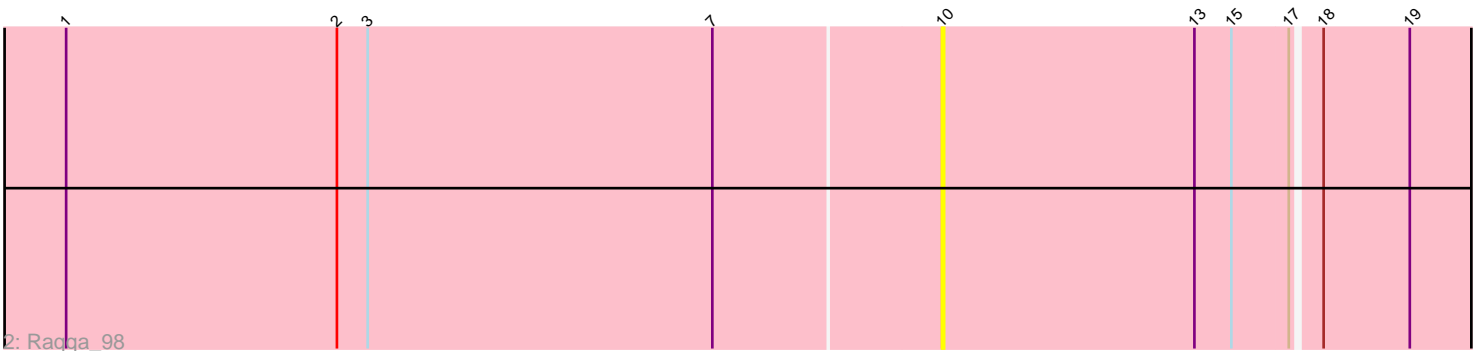
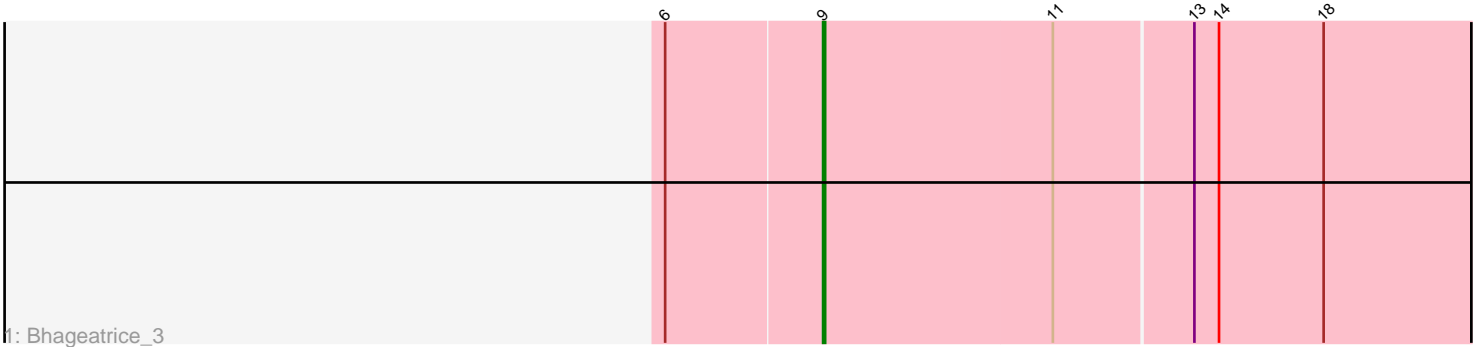


Pham 280919



Note: Tracks are now grouped by subcluster and scaled. Switching in subcluster is indicated by changes in track color. Track scale is now set by default to display the region 30 bp upstream of start 1 to 30 bp downstream of the last possible start. If this default region is judged to be packed too tightly with annotated starts, the track will be further scaled to only show that region of the ORF with annotated starts. This action will be indicated by adding "Zoomed" to the title. For starts, yellow indicates the location of called starts comprised solely of Glimmer/GeneMark auto-annotations, green indicates the location of called starts with at least 1 manual gene annotation.

Pham 280919 Report

This analysis was run 02/07/26 on database version 634.

Pham number 280919 has 19 members, 2 are drafts.

Phages represented in each track:

- Track 1 : Bhageatrice_3
- Track 2 : Raqqa_98
- Track 3 : Hyzer_22
- Track 4 : Whiteclaw_19, Savage_19, SoilAssassin_19, Yeet412_19, Clap_19, Gizermo_19, TuertoX_19, Bjanese7_19, GemG_19, Cynthia_19, LordFarquaad_19, Mocha12_19, Haley23_19, Ebert_19, Sproutie_19, Attis_19

Summary of Final Annotations (See graph section above for start numbers):

The start number called the most often in the published annotations is 8, it was called in 16 of the 17 non-draft genes in the pham.

Genes that call this "Most Annotated" start:

- Attis_19, Bjanese7_19, Clap_19, Cynthia_19, Ebert_19, GemG_19, Gizermo_19, Haley23_19, Hyzer_22, LordFarquaad_19, Mocha12_19, Savage_19, SoilAssassin_19, Sproutie_19, TuertoX_19, Whiteclaw_19, Yeet412_19,

Genes that have the "Most Annotated" start but do not call it:

-

Genes that do not have the "Most Annotated" start:

- Bhageatrice_3, Raqqa_98,

Summary by start number:

Start 8:

- Found in 17 of 19 (89.5%) of genes in pham
- Manual Annotations of this start: 16 of 17
- Called 100.0% of time when present
- Phage (with cluster) where this start called: Attis_19 (CZ2), Bjanese7_19 (CZ2), Clap_19 (CZ2), Cynthia_19 (CZ2), Ebert_19 (CZ2), GemG_19 (CZ2), Gizermo_19 (CZ2), Haley23_19 (CZ2), Hyzer_22 (CZ1), LordFarquaad_19 (CZ2), Mocha12_19 (CZ2), Savage_19 (CZ2), SoilAssassin_19 (CZ2), Sproutie_19 (CZ2), TuertoX_19 (CZ2), Whiteclaw_19 (CZ2), Yeet412_19 (CZ2),

Start 9:

- Found in 1 of 19 (5.3%) of genes in pham
- Manual Annotations of this start: 1 of 17
- Called 100.0% of time when present
- Phage (with cluster) where this start called: Bhageatrice_3 (AY),

Start 10:

- Found in 1 of 19 (5.3%) of genes in pham
- No Manual Annotations of this start.
- Called 100.0% of time when present
- Phage (with cluster) where this start called: Raqqa_98 (AY),

Summary by clusters:

There are 3 clusters represented in this pham: CZ2, AY, CZ1,

Info for manual annotations of cluster AY:

- Start number 9 was manually annotated 1 time for cluster AY.

Info for manual annotations of cluster CZ2:

- Start number 8 was manually annotated 16 times for cluster CZ2.

Gene Information:

Gene: Attis_19 Start: 17679, Stop: 18002, Start Num: 8

Candidate Starts for Attis_19:

(Start: 8 @17679 has 16 MA's), (13, 17859), (15, 17877), (16, 17901),

Gene: Bhageatrice_3 Start: 1708, Stop: 2037, Start Num: 9

Candidate Starts for Bhageatrice_3:

(6, 1633), (Start: 9 @1708 has 1 MA's), (11, 1819), (13, 1885), (14, 1897), (18, 1948),

Gene: Bjanes7_19 Start: 17679, Stop: 18002, Start Num: 8

Candidate Starts for Bjanes7_19:

(Start: 8 @17679 has 16 MA's), (13, 17859), (15, 17877), (16, 17901),

Gene: Clap_19 Start: 17686, Stop: 18009, Start Num: 8

Candidate Starts for Clap_19:

(Start: 8 @17686 has 16 MA's), (13, 17866), (15, 17884), (16, 17908),

Gene: Cynthia_19 Start: 17686, Stop: 18009, Start Num: 8

Candidate Starts for Cynthia_19:

(Start: 8 @17686 has 16 MA's), (13, 17866), (15, 17884), (16, 17908),

Gene: Ebert_19 Start: 17686, Stop: 18009, Start Num: 8

Candidate Starts for Ebert_19:

(Start: 8 @17686 has 16 MA's), (13, 17866), (15, 17884), (16, 17908),

Gene: GemG_19 Start: 17686, Stop: 18009, Start Num: 8

Candidate Starts for GemG_19:

(Start: 8 @17686 has 16 MA's), (13, 17866), (15, 17884), (16, 17908),

Gene: Gizermo_19 Start: 17686, Stop: 18009, Start Num: 8

Candidate Starts for Gizermo_19:

(Start: 8 @17686 has 16 MA's), (13, 17866), (15, 17884), (16, 17908),

Gene: Haley23_19 Start: 17686, Stop: 18009, Start Num: 8

Candidate Starts for Haley23_19:

(Start: 8 @17686 has 16 MA's), (13, 17866), (15, 17884), (16, 17908),

Gene: Hyzer_22 Start: 21136, Stop: 21459, Start Num: 8

Candidate Starts for Hyzer_22:

(4, 21049), (5, 21052), (Start: 8 @21136 has 16 MA's), (12, 21280), (13, 21316), (15, 21334),

Gene: LordFarquaad_19 Start: 17679, Stop: 18002, Start Num: 8

Candidate Starts for LordFarquaad_19:

(Start: 8 @17679 has 16 MA's), (13, 17859), (15, 17877), (16, 17901),

Gene: Mocha12_19 Start: 17686, Stop: 18009, Start Num: 8

Candidate Starts for Mocha12_19:

(Start: 8 @17686 has 16 MA's), (13, 17866), (15, 17884), (16, 17908),

Gene: Raqqa_98 Start: 52973, Stop: 53242, Start Num: 10

Candidate Starts for Raqqa_98:

(1, 52550), (2, 52682), (3, 52697), (7, 52865), (10, 52973), (13, 53096), (15, 53114), (17, 53141), (18, 53153), (19, 53195),

Gene: Savage_19 Start: 17686, Stop: 18009, Start Num: 8

Candidate Starts for Savage_19:

(Start: 8 @17686 has 16 MA's), (13, 17866), (15, 17884), (16, 17908),

Gene: SoilAssassin_19 Start: 17679, Stop: 18002, Start Num: 8

Candidate Starts for SoilAssassin_19:

(Start: 8 @17679 has 16 MA's), (13, 17859), (15, 17877), (16, 17901),

Gene: Sproutie_19 Start: 17686, Stop: 18009, Start Num: 8

Candidate Starts for Sproutie_19:

(Start: 8 @17686 has 16 MA's), (13, 17866), (15, 17884), (16, 17908),

Gene: TuertoX_19 Start: 17686, Stop: 18009, Start Num: 8

Candidate Starts for TuertoX_19:

(Start: 8 @17686 has 16 MA's), (13, 17866), (15, 17884), (16, 17908),

Gene: Whiteclaw_19 Start: 17686, Stop: 18009, Start Num: 8

Candidate Starts for Whiteclaw_19:

(Start: 8 @17686 has 16 MA's), (13, 17866), (15, 17884), (16, 17908),

Gene: Yeet412_19 Start: 17679, Stop: 18002, Start Num: 8

Candidate Starts for Yeet412_19:

(Start: 8 @17679 has 16 MA's), (13, 17859), (15, 17877), (16, 17901),