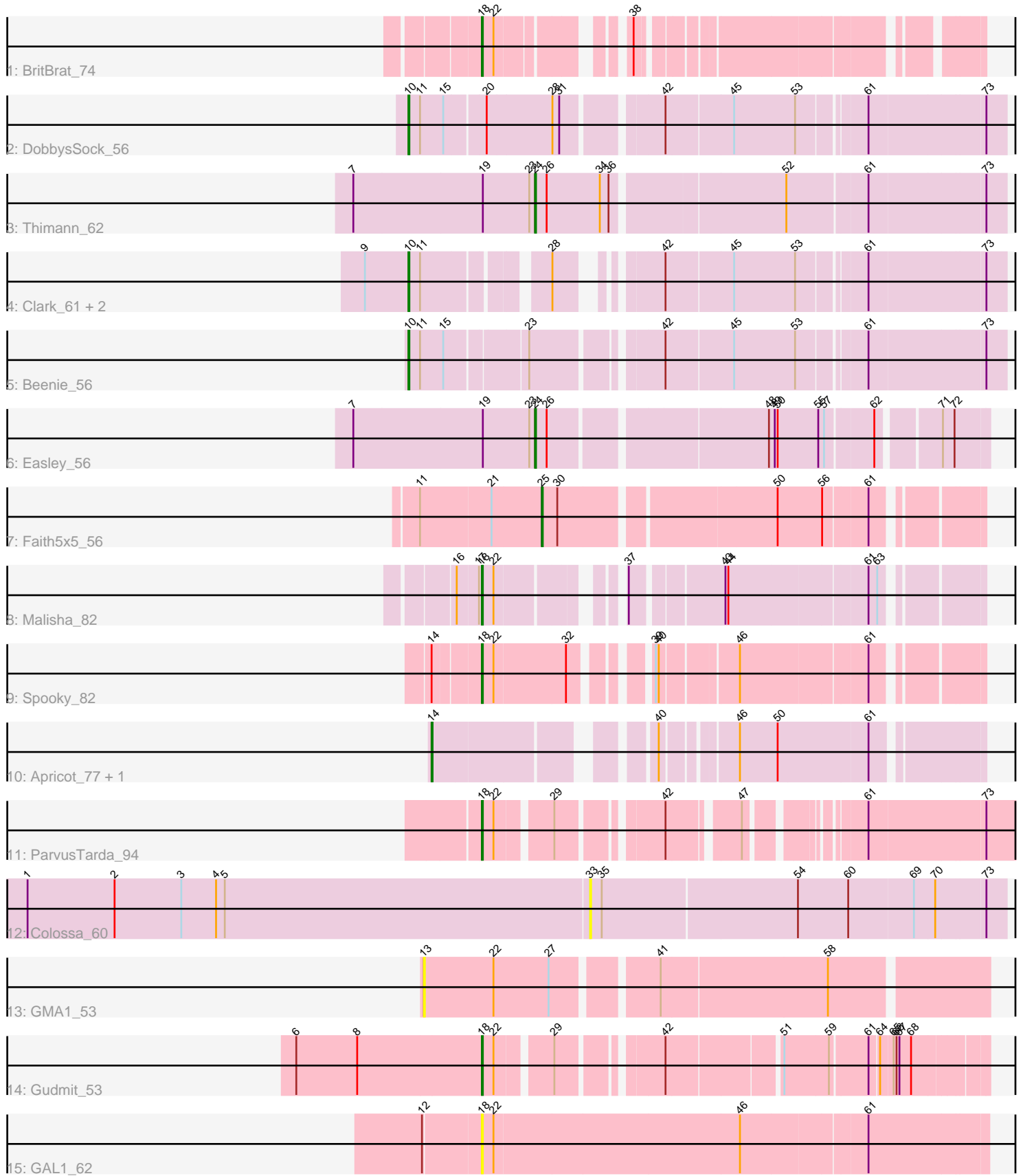


# Pham 280939



Note: Tracks are now grouped by subcluster and scaled. Switching in subcluster is indicated by changes in track color. Track scale is now set by default to display the region 30 bp upstream of start 1 to 30 bp downstream of the last possible start. If this default region is judged to be packed too tightly with annotated starts, the track will be further scaled to only show that region of the ORF with annotated starts. This action will be indicated by adding "Zoomed" to the title. For starts, yellow indicates the location of called starts comprised solely of Glimmer/GeneMark auto-annotations, green indicates the location of called starts with at least 1 manual gene annotation.

## Pham 280939 Report

This analysis was run 02/07/26 on database version 634.

Pham number 280939 has 18 members, 3 are drafts.

Phages represented in each track:

- Track 1 : BritBrat\_74
- Track 2 : DobbysSock\_56
- Track 3 : Thimann\_62
- Track 4 : Clark\_61, Samman98\_62, Invecetra\_64
- Track 5 : Beenie\_56
- Track 6 : Easley\_56
- Track 7 : Faith5x5\_56
- Track 8 : Malisha\_82
- Track 9 : Spooky\_82
- Track 10 : Apricot\_77, Lton\_57
- Track 11 : ParvusTarda\_94
- Track 12 : Colossa\_60
- Track 13 : GMA1\_53
- Track 14 : Gudmit\_53
- Track 15 : GAL1\_62

### ***Summary of Final Annotations (See graph section above for start numbers):***

The start number called the most often in the published annotations is 18, it was called in 5 of the 15 non-draft genes in the pham.

Genes that call this "Most Annotated" start:

- BritBrat\_74, GAL1\_62, Gudmit\_53, Malisha\_82, ParvusTarda\_94, Spooky\_82,

Genes that have the "Most Annotated" start but do not call it:

- 

Genes that do not have the "Most Annotated" start:

- Apricot\_77, Beenie\_56, Clark\_61, Colossa\_60, DobbysSock\_56, Easley\_56, Faith5x5\_56, GMA1\_53, Invecetra\_64, Lton\_57, Samman98\_62, Thimann\_62,

### **Summary by start number:**

Start 10:

- Found in 5 of 18 ( 27.8% ) of genes in pham
- Manual Annotations of this start: 5 of 15
- Called 100.0% of time when present
- Phage (with cluster) where this start called: Beenie\_56 (CZ4), Clark\_61 (CZ4), DobbysSock\_56 (CZ4), Invectra\_64 (CZ4), Samman98\_62 (CZ4),

Start 13:

- Found in 1 of 18 ( 5.6% ) of genes in pham
- No Manual Annotations of this start.
- Called 100.0% of time when present
- Phage (with cluster) where this start called: GMA1\_53 (singleton),

Start 14:

- Found in 3 of 18 ( 16.7% ) of genes in pham
- Manual Annotations of this start: 2 of 15
- Called 66.7% of time when present
- Phage (with cluster) where this start called: Apricot\_77 (DN3), Lton\_57 (CZ),

Start 18:

- Found in 6 of 18 ( 33.3% ) of genes in pham
- Manual Annotations of this start: 5 of 15
- Called 100.0% of time when present
- Phage (with cluster) where this start called: BritBrat\_74 (CY2), GAL1\_62 (singleton), Gudmit\_53 (singleton), Malisha\_82 (DN), ParvusTarda\_94 (DV), Spooky\_82 (DN2),

Start 24:

- Found in 2 of 18 ( 11.1% ) of genes in pham
- Manual Annotations of this start: 2 of 15
- Called 100.0% of time when present
- Phage (with cluster) where this start called: Easley\_56 (CZ4), Thimann\_62 (CZ4),

Start 25:

- Found in 1 of 18 ( 5.6% ) of genes in pham
- Manual Annotations of this start: 1 of 15
- Called 100.0% of time when present
- Phage (with cluster) where this start called: Faith5x5\_56 (CZ6),

Start 33:

- Found in 1 of 18 ( 5.6% ) of genes in pham
- No Manual Annotations of this start.
- Called 100.0% of time when present
- Phage (with cluster) where this start called: Colossa\_60 (KA),

### **Summary by clusters:**

There are 10 clusters represented in this pham: DN, CY2, singleton, CZ6, KA, CZ4, CZ, DN3, DN2, DV,

Info for manual annotations of cluster CY2:

- Start number 18 was manually annotated 1 time for cluster CY2.

Info for manual annotations of cluster CZ:

- Start number 14 was manually annotated 1 time for cluster CZ.

Info for manual annotations of cluster CZ4:

- Start number 10 was manually annotated 5 times for cluster CZ4.
- Start number 24 was manually annotated 2 times for cluster CZ4.

Info for manual annotations of cluster CZ6:

- Start number 25 was manually annotated 1 time for cluster CZ6.

Info for manual annotations of cluster DN:

- Start number 18 was manually annotated 1 time for cluster DN.

Info for manual annotations of cluster DN2:

- Start number 18 was manually annotated 1 time for cluster DN2.

Info for manual annotations of cluster DN3:

- Start number 14 was manually annotated 1 time for cluster DN3.

Info for manual annotations of cluster DV:

- Start number 18 was manually annotated 1 time for cluster DV.

### ***Gene Information:***

Gene: Apricot\_77 Start: 44433, Stop: 44912, Start Num: 14

Candidate Starts for Apricot\_77:

(Start: 14 @44433 has 2 MA's), (40, 44619), (46, 44682), (50, 44721), (61, 44811),

Gene: Beenie\_56 Start: 40503, Stop: 41057, Start Num: 10

Candidate Starts for Beenie\_56:

(Start: 10 @40503 has 5 MA's), (11, 40515), (15, 40539), (23, 40614), (42, 40731), (45, 40797), (53, 40860), (61, 40923), (73, 41037),

Gene: BritBrat\_74 Start: 46520, Stop: 46924, Start Num: 18

Candidate Starts for BritBrat\_74:

(Start: 18 @46520 has 5 MA's), (22, 46532), (38, 46631),

Gene: Clark\_61 Start: 40299, Stop: 40820, Start Num: 10

Candidate Starts for Clark\_61:

(9, 40254), (Start: 10 @40299 has 5 MA's), (11, 40311), (28, 40419), (42, 40494), (45, 40560), (53, 40623), (61, 40686), (73, 40800),

Gene: Colossa\_60 Start: 39464, Stop: 39880, Start Num: 33

Candidate Starts for Colossa\_60:

(1, 38885), (2, 38975), (3, 39044), (4, 39080), (5, 39089), (33, 39464), (35, 39476), (54, 39674), (60, 39725), (69, 39791), (70, 39812), (73, 39860),

Gene: DobbysSock\_56 Start: 39905, Stop: 40468, Start Num: 10

Candidate Starts for DobbysSock\_56:

(Start: 10 @39905 has 5 MA's), (11, 39917), (15, 39941), (20, 39980), (28, 40046), (31, 40052), (42, 40142), (45, 40208), (53, 40271), (61, 40334), (73, 40448),

Gene: Easley\_56 Start: 39021, Stop: 39443, Start Num: 24

Candidate Starts for Easley\_56:

(7, 38835), (19, 38967), (23, 39015), (Start: 24 @39021 has 2 MA's), (26, 39033), (48, 39240), (49, 39246), (50, 39249), (55, 39291), (57, 39297), (62, 39342), (71, 39399), (72, 39411),

Gene: Faith5x5\_56 Start: 35249, Stop: 35653, Start Num: 25

Candidate Starts for Faith5x5\_56:

(11, 35126), (21, 35198), (Start: 25 @35249 has 1 MA's), (30, 35264), (50, 35471), (56, 35516), (61, 35558),

Gene: GAL1\_62 Start: 40466, Stop: 40969, Start Num: 18

Candidate Starts for GAL1\_62:

(12, 40409), (Start: 18 @40466 has 5 MA's), (22, 40478), (46, 40727), (61, 40850),

Gene: GMA1\_53 Start: 33138, Stop: 33686, Start Num: 13

Candidate Starts for GMA1\_53:

(13, 33138), (22, 33210), (27, 33267), (41, 33363), (58, 33531),

Gene: Gudmit\_53 Start: 33127, Stop: 33576, Start Num: 18

Candidate Starts for Gudmit\_53:

(6, 32938), (8, 33001), (Start: 18 @33127 has 5 MA's), (22, 33139), (29, 33190), (42, 33280), (51, 33388), (59, 33433), (61, 33469), (64, 33478), (65, 33490), (66, 33493), (67, 33496), (68, 33508),

Gene: Invecetra\_64 Start: 41872, Stop: 42393, Start Num: 10

Candidate Starts for Invecetra\_64:

(9, 41827), (Start: 10 @41872 has 5 MA's), (11, 41884), (28, 41992), (42, 42067), (45, 42133), (53, 42196), (61, 42259), (73, 42373),

Gene: Lton\_57 Start: 34468, Stop: 34947, Start Num: 14

Candidate Starts for Lton\_57:

(Start: 14 @34468 has 2 MA's), (40, 34654), (46, 34717), (50, 34756), (61, 34846),

Gene: Malisha\_82 Start: 49477, Stop: 49902, Start Num: 18

Candidate Starts for Malisha\_82:

(16, 49453), (17, 49474), (Start: 18 @49477 has 5 MA's), (22, 49489), (37, 49585), (43, 49669), (44, 49672), (61, 49807), (63, 49816),

Gene: ParvusTarda\_94 Start: 64352, Stop: 64807, Start Num: 18

Candidate Starts for ParvusTarda\_94:

(Start: 18 @64352 has 5 MA's), (22, 64364), (29, 64415), (42, 64505), (47, 64568), (61, 64661), (73, 64775),

Gene: Samman98\_62 Start: 40402, Stop: 40923, Start Num: 10

Candidate Starts for Samman98\_62:

(9, 40357), (Start: 10 @40402 has 5 MA's), (11, 40414), (28, 40522), (42, 40597), (45, 40663), (53, 40726), (61, 40789), (73, 40903),

Gene: Spooky\_82 Start: 46716, Stop: 47147, Start Num: 18

Candidate Starts for Spooky\_82:

(Start: 14 @46671 has 2 MA's), (Start: 18 @46716 has 5 MA's), (22, 46728), (32, 46800), (39, 46857), (40, 46860), (46, 46929), (61, 47052),

Gene: Thimann\_62 Start: 40740, Stop: 41195, Start Num: 24

Candidate Starts for Thimann\_62:

(7, 40554), (19, 40686), (23, 40734), (Start: 24 @40740 has 2 MA's), (26, 40752), (34, 40806), (36, 40815), (52, 40983), (61, 41061), (73, 41175),