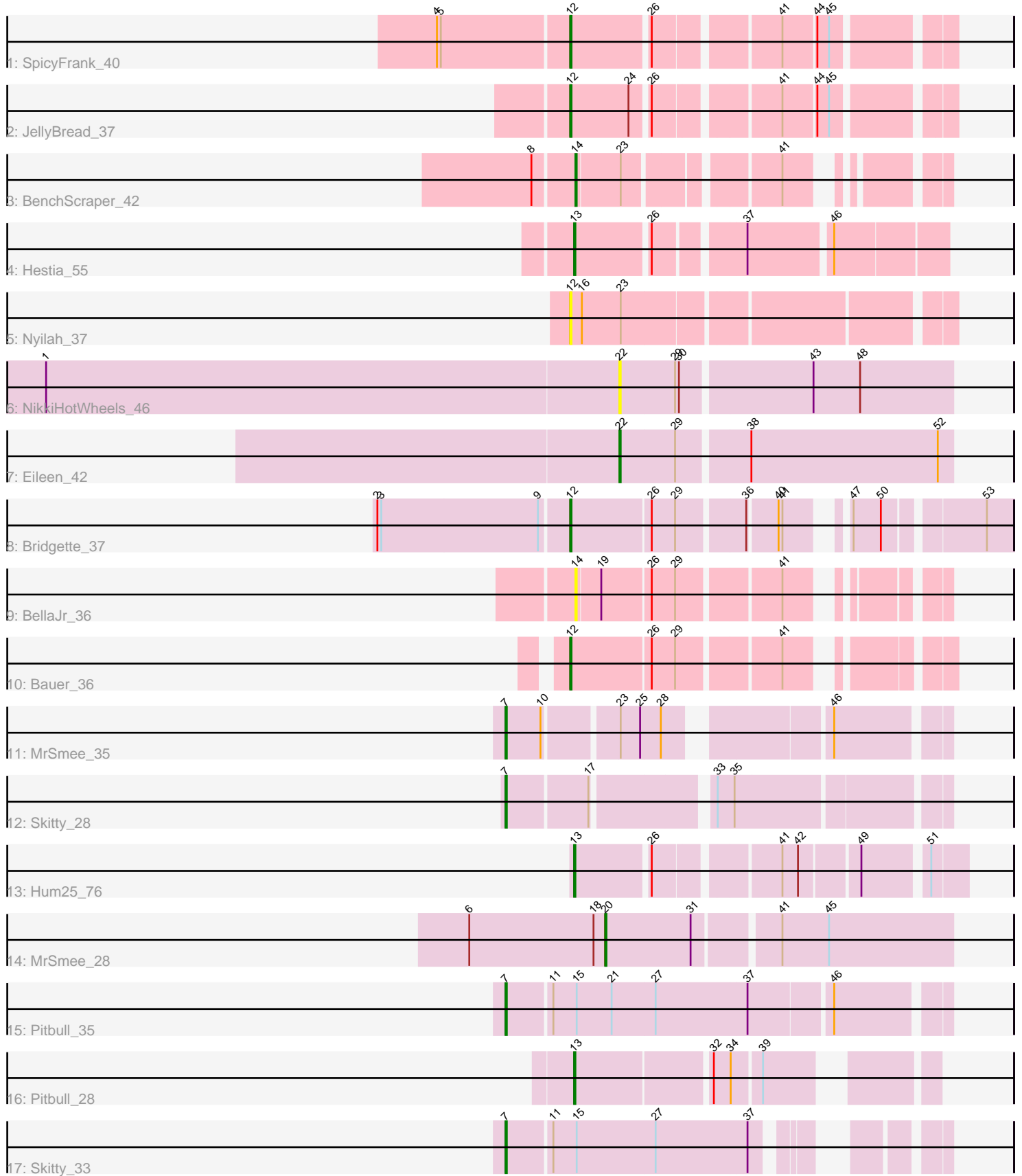


# Pham 280961



Note: Tracks are now grouped by subcluster and scaled. Switching in subcluster is indicated by changes in track color. Track scale is now set by default to display the region 30 bp upstream of start 1 to 30 bp downstream of the last possible start. If this default region is judged to be packed too tightly with annotated starts, the track will be further scaled to only show that region of the ORF with annotated starts. This action will be indicated by adding "Zoomed" to the title. For starts, yellow indicates the location of called starts comprised solely of Glimmer/GeneMark auto-annotations, green indicates the location of called starts with at least 1 manual gene annotation.

## Pham 280961 Report

This analysis was run 02/07/26 on database version 634.

Pham number 280961 has 17 members, 3 are drafts.

Phages represented in each track:

- Track 1 : SpicyFrank\_40
- Track 2 : JellyBread\_37
- Track 3 : BenchScraper\_42
- Track 4 : Hestia\_55
- Track 5 : Nyilah\_37
- Track 6 : NikkiHotWheels\_46
- Track 7 : Eileen\_42
- Track 8 : Bridgette\_37
- Track 9 : BellaJr\_36
- Track 10 : Bauer\_36
- Track 11 : MrSmee\_35
- Track 12 : Skitty\_28
- Track 13 : Hum25\_76
- Track 14 : MrSmee\_28
- Track 15 : Pitbull\_35
- Track 16 : Pitbull\_28
- Track 17 : Skitty\_33

### ***Summary of Final Annotations (See graph section above for start numbers):***

The start number called the most often in the published annotations is 7, it was called in 4 of the 14 non-draft genes in the pham.

Genes that call this "Most Annotated" start:

- MrSmee\_35, Pitbull\_35, Skitty\_28, Skitty\_33,

Genes that have the "Most Annotated" start but do not call it:

- 

Genes that do not have the "Most Annotated" start:

- Bauer\_36, BellaJr\_36, BenchScraper\_42, Bridgette\_37, Eileen\_42, Hestia\_55, Hum25\_76, JellyBread\_37, MrSmee\_28, NikkiHotWheels\_46, Nyilah\_37, Pitbull\_28, SpicyFrank\_40,

## Summary by start number:

### Start 7:

- Found in 4 of 17 ( 23.5% ) of genes in pham
- Manual Annotations of this start: 4 of 14
- Called 100.0% of time when present
- Phage (with cluster) where this start called: MrSmee\_35 (FQ), Pitbull\_35 (FQ), Skitty\_28 (FQ), Skitty\_33 (FQ),

### Start 12:

- Found in 5 of 17 ( 29.4% ) of genes in pham
- Manual Annotations of this start: 4 of 14
- Called 100.0% of time when present
- Phage (with cluster) where this start called: Bauer\_36 (FN), Bridgette\_37 (FA), JellyBread\_37 (AY), Nyilah\_37 (AY), SpicyFrank\_40 (AY),

### Start 13:

- Found in 3 of 17 ( 17.6% ) of genes in pham
- Manual Annotations of this start: 3 of 14
- Called 100.0% of time when present
- Phage (with cluster) where this start called: Hestia\_55 (AY), Hum25\_76 (FQ), Pitbull\_28 (FQ),

### Start 14:

- Found in 2 of 17 ( 11.8% ) of genes in pham
- Manual Annotations of this start: 1 of 14
- Called 100.0% of time when present
- Phage (with cluster) where this start called: BellaJr\_36 (FN), BenchScraper\_42 (AY),

### Start 20:

- Found in 1 of 17 ( 5.9% ) of genes in pham
- Manual Annotations of this start: 1 of 14
- Called 100.0% of time when present
- Phage (with cluster) where this start called: MrSmee\_28 (FQ),

### Start 22:

- Found in 2 of 17 ( 11.8% ) of genes in pham
- Manual Annotations of this start: 1 of 14
- Called 100.0% of time when present
- Phage (with cluster) where this start called: Eileen\_42 (FA), NikkiHotWheels\_46 (FA),

## Summary by clusters:

There are 4 clusters represented in this pham: AY, FQ, FN, FA,

### Info for manual annotations of cluster AY:

- Start number 12 was manually annotated 2 times for cluster AY.
- Start number 13 was manually annotated 1 time for cluster AY.
- Start number 14 was manually annotated 1 time for cluster AY.

### Info for manual annotations of cluster FA:

- Start number 12 was manually annotated 1 time for cluster FA.

- Start number 22 was manually annotated 1 time for cluster FA.

Info for manual annotations of cluster FN:

- Start number 12 was manually annotated 1 time for cluster FN.

Info for manual annotations of cluster FQ:

- Start number 7 was manually annotated 4 times for cluster FQ.
- Start number 13 was manually annotated 2 times for cluster FQ.
- Start number 20 was manually annotated 1 time for cluster FQ.

### **Gene Information:**

Gene: Bauer\_36 Start: 26236, Stop: 26484, Start Num: 12

Candidate Starts for Bauer\_36:

(Start: 12 @26236 has 4 MA's), (26, 26296), (29, 26314), (41, 26386),

Gene: BellaJr\_36 Start: 27299, Stop: 27532, Start Num: 14

Candidate Starts for BellaJr\_36:

(Start: 14 @27299 has 1 MA's), (19, 27317), (26, 27353), (29, 27371), (41, 27443),

Gene: BenchScraper\_42 Start: 27914, Stop: 27690, Start Num: 14

Candidate Starts for BenchScraper\_42:

(8, 27944), (Start: 14 @27914 has 1 MA's), (23, 27881), (41, 27779),

Gene: Bridgette\_37 Start: 26378, Stop: 26668, Start Num: 12

Candidate Starts for Bridgette\_37:

(2, 26234), (3, 26237), (9, 26357), (Start: 12 @26378 has 4 MA's), (26, 26438), (29, 26456), (36, 26504), (40, 26525), (41, 26528), (47, 26558), (50, 26579), (53, 26648),

Gene: Eileen\_42 Start: 28759, Stop: 29007, Start Num: 22

Candidate Starts for Eileen\_42:

(Start: 22 @28759 has 1 MA's), (29, 28801), (38, 28852), (52, 28996),

Gene: Hestia\_55 Start: 31927, Stop: 32184, Start Num: 13

Candidate Starts for Hestia\_55:

(Start: 13 @31927 has 3 MA's), (26, 31981), (37, 32041), (46, 32101),

Gene: Hum25\_76 Start: 39195, Stop: 39458, Start Num: 13

Candidate Starts for Hum25\_76:

(Start: 13 @39195 has 3 MA's), (26, 39249), (41, 39333), (42, 39345), (49, 39387), (51, 39432),

Gene: JellyBread\_37 Start: 26498, Stop: 26244, Start Num: 12

Candidate Starts for JellyBread\_37:

(Start: 12 @26498 has 4 MA's), (24, 26453), (26, 26441), (41, 26357), (44, 26333), (45, 26324),

Gene: MrSmee\_35 Start: 26014, Stop: 25721, Start Num: 7

Candidate Starts for MrSmee\_35:

(Start: 7 @26014 has 4 MA's), (10, 25987), (23, 25936), (25, 25921), (28, 25906), (46, 25801),

Gene: MrSmee\_28 Start: 22939, Stop: 22682, Start Num: 20

Candidate Starts for MrSmee\_28:

(6, 23044), (18, 22948), (Start: 20 @22939 has 1 MA's), (31, 22873), (41, 22813), (45, 22777),

Gene: NikkiHotWheels\_46 Start: 29764, Stop: 30012, Start Num: 22

Candidate Starts for NikkiHotWheels\_46:

(1, 29323), (Start: 22 @29764 has 1 MA's), (29, 29806), (30, 29809), (43, 29905), (48, 29941),

Gene: Nyilah\_37 Start: 26243, Stop: 25974, Start Num: 12

Candidate Starts for Nyilah\_37:

(Start: 12 @26243 has 4 MA's), (16, 26234), (23, 26204),

Gene: Pitbull\_35 Start: 25095, Stop: 24775, Start Num: 7

Candidate Starts for Pitbull\_35:

(Start: 7 @25095 has 4 MA's), (11, 25062), (15, 25044), (21, 25017), (27, 24984), (37, 24915), (46, 24855),

Gene: Pitbull\_28 Start: 22251, Stop: 22015, Start Num: 13

Candidate Starts for Pitbull\_28:

(Start: 13 @22251 has 3 MA's), (32, 22152), (34, 22140), (39, 22119),

Gene: Skitty\_28 Start: 22362, Stop: 22060, Start Num: 7

Candidate Starts for Skitty\_28:

(Start: 7 @22362 has 4 MA's), (17, 22302), (33, 22221), (35, 22209),

Gene: Skitty\_33 Start: 24641, Stop: 24363, Start Num: 7

Candidate Starts for Skitty\_33:

(Start: 7 @24641 has 4 MA's), (11, 24608), (15, 24590), (27, 24530), (37, 24461),

Gene: SpicyFrank\_40 Start: 27728, Stop: 27474, Start Num: 12

Candidate Starts for SpicyFrank\_40:

(4, 27827), (5, 27824), (Start: 12 @27728 has 4 MA's), (26, 27671), (41, 27587), (44, 27563), (45, 27554),