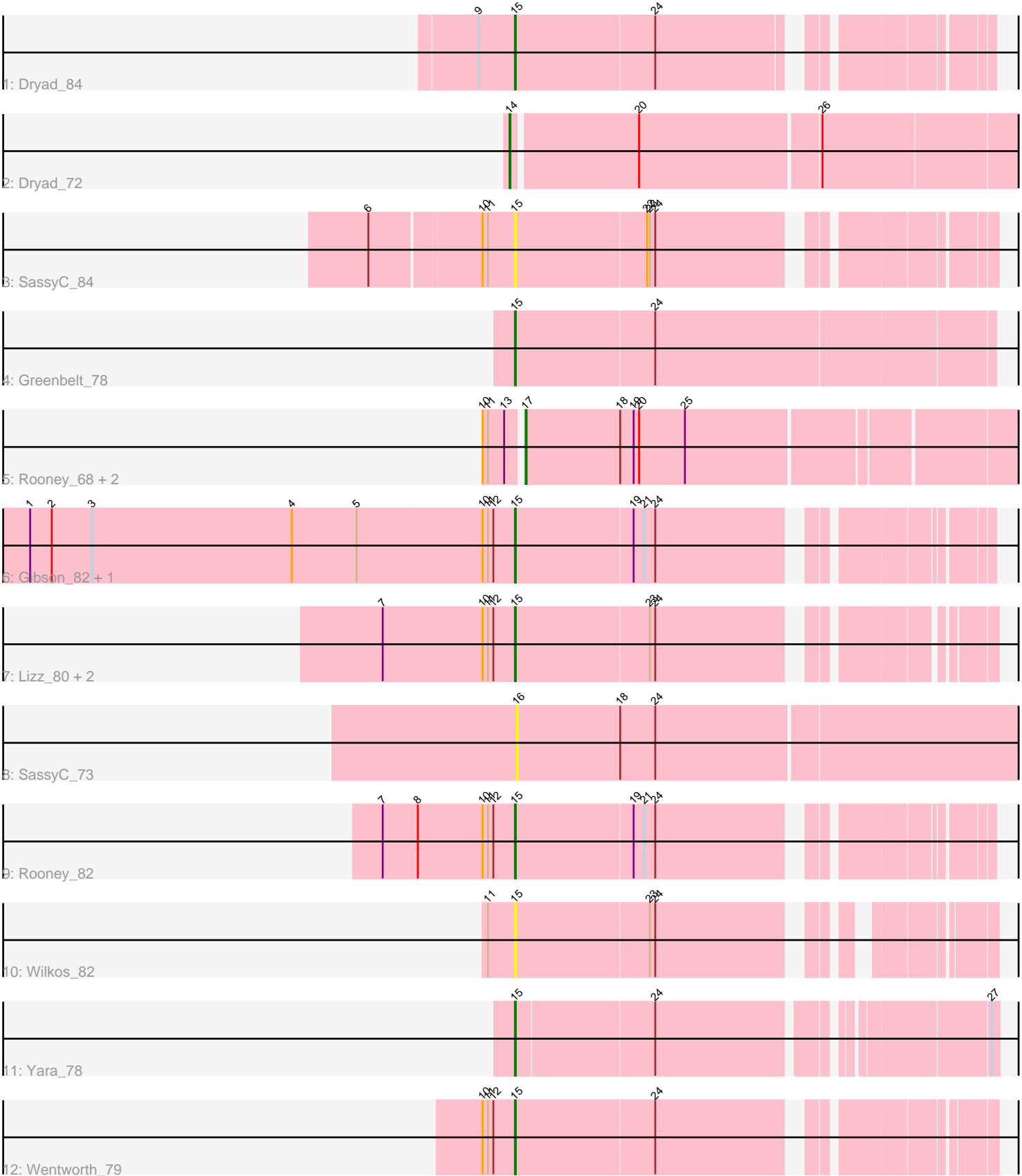


Pham 280964



Note: Tracks are now grouped by subcluster and scaled. Switching in subcluster is indicated by changes in track color. Track scale is now set by default to display the region 30 bp upstream of start 1 to 30 bp downstream of the last possible start. If this default region is judged to be packed too tightly with annotated starts, the track will be further scaled to only show that region of the ORF with annotated starts. This action will be indicated by adding "Zoomed" to the title. For starts, yellow indicates the location of called starts comprised solely of Glimmer/GeneMark auto-annotations, green indicates the location of called starts with at least 1 manual gene annotation.

Pham 280964 Report

This analysis was run 02/07/26 on database version 634.

Pham number 280964 has 17 members, 5 are drafts.

Phages represented in each track:

- Track 1 : Dryad_84
- Track 2 : Dryad_72
- Track 3 : SassyC_84
- Track 4 : Greenbelt_78
- Track 5 : Rooney_68, Virizion_73, Gibson_68
- Track 6 : Gibson_82, Virizion_88
- Track 7 : Lizz_80, PHTowN_80, ShakeNBake_80
- Track 8 : SassyC_73
- Track 9 : Rooney_82
- Track 10 : Wilkos_82
- Track 11 : Yara_78
- Track 12 : Wentworth_79

Summary of Final Annotations (See graph section above for start numbers):

The start number called the most often in the published annotations is 15, it was called in 9 of the 12 non-draft genes in the pham.

Genes that call this "Most Annotated" start:

- Dryad_84, Gibson_82, Greenbelt_78, Lizz_80, PHTowN_80, Rooney_82, SassyC_84, ShakeNBake_80, Virizion_88, Wentworth_79, Wilkos_82, Yara_78,

Genes that have the "Most Annotated" start but do not call it:

-

Genes that do not have the "Most Annotated" start:

- Dryad_72, Gibson_68, Rooney_68, SassyC_73, Virizion_73,

Summary by start number:

Start 14:

- Found in 1 of 17 (5.9%) of genes in pham
- Manual Annotations of this start: 1 of 12
- Called 100.0% of time when present

- Phage (with cluster) where this start called: Dryad_72 (BN),

Start 15:

- Found in 12 of 17 (70.6%) of genes in pham
- Manual Annotations of this start: 9 of 12
- Called 100.0% of time when present
- Phage (with cluster) where this start called: Dryad_84 (BN), Gibson_82 (BN), Greenbelt_78 (BN), Lizz_80 (BN), PHTowN_80 (BN), Rooney_82 (BN), SassyC_84 (BN), ShakeNBake_80 (BN), Virizion_88 (BN), Wentworth_79 (BN), Wilkos_82 (BN), Yara_78 (BN),

Start 16:

- Found in 1 of 17 (5.9%) of genes in pham
- No Manual Annotations of this start.
- Called 100.0% of time when present
- Phage (with cluster) where this start called: SassyC_73 (BN),

Start 17:

- Found in 3 of 17 (17.6%) of genes in pham
- Manual Annotations of this start: 2 of 12
- Called 100.0% of time when present
- Phage (with cluster) where this start called: Gibson_68 (BN), Rooney_68 (BN), Virizion_73 (BN),

Summary by clusters:

There is one cluster represented in this pham: BN

Info for manual annotations of cluster BN:

- Start number 14 was manually annotated 1 time for cluster BN.
- Start number 15 was manually annotated 9 times for cluster BN.
- Start number 17 was manually annotated 2 times for cluster BN.

Gene Information:

Gene: Dryad_84 Start: 55433, Stop: 54966, Start Num: 15

Candidate Starts for Dryad_84:

(9, 55472), (Start: 15 @55433 has 9 MA's), (24, 55280),

Gene: Dryad_72 Start: 48943, Stop: 48380, Start Num: 14

Candidate Starts for Dryad_72:

(Start: 14 @48943 has 1 MA's), (20, 48808), (26, 48613),

Gene: Gibson_82 Start: 55230, Stop: 54763, Start Num: 15

Candidate Starts for Gibson_82:

(1, 55767), (2, 55743), (3, 55698), (4, 55476), (5, 55404), (10, 55266), (11, 55260), (12, 55254), (Start: 15 @55230 has 9 MA's), (19, 55101), (21, 55089), (24, 55077),

Gene: Gibson_68 Start: 48192, Stop: 47644, Start Num: 17

Candidate Starts for Gibson_68:

(10, 48231), (11, 48225), (13, 48207), (Start: 17 @48192 has 2 MA's), (18, 48087), (19, 48072), (20, 48066), (25, 48015),

Gene: Greenbelt_78 Start: 51064, Stop: 50546, Start Num: 15

Candidate Starts for Greenbelt_78:

(Start: 15 @51064 has 9 MA's), (24, 50911),

Gene: Lizz_80 Start: 54885, Stop: 54421, Start Num: 15

Candidate Starts for Lizz_80:

(7, 55032), (10, 54921), (11, 54915), (12, 54909), (Start: 15 @54885 has 9 MA's), (23, 54738), (24, 54732),

Gene: PHTowN_80 Start: 54883, Stop: 54419, Start Num: 15

Candidate Starts for PHTowN_80:

(7, 55030), (10, 54919), (11, 54913), (12, 54907), (Start: 15 @54883 has 9 MA's), (23, 54736), (24, 54730),

Gene: Rooney_68 Start: 48168, Stop: 47620, Start Num: 17

Candidate Starts for Rooney_68:

(10, 48207), (11, 48201), (13, 48183), (Start: 17 @48168 has 2 MA's), (18, 48063), (19, 48048), (20, 48042), (25, 47991),

Gene: Rooney_82 Start: 55236, Stop: 54769, Start Num: 15

Candidate Starts for Rooney_82:

(7, 55383), (8, 55344), (10, 55272), (11, 55266), (12, 55260), (Start: 15 @55236 has 9 MA's), (19, 55107), (21, 55095), (24, 55083),

Gene: SassyC_84 Start: 55255, Stop: 54782, Start Num: 15

Candidate Starts for SassyC_84:

(6, 55411), (10, 55291), (11, 55285), (Start: 15 @55255 has 9 MA's), (22, 55111), (23, 55108), (24, 55102),

Gene: SassyC_73 Start: 49109, Stop: 48540, Start Num: 16

Candidate Starts for SassyC_73:

(16, 49109), (18, 48995), (24, 48956),

Gene: ShakeNBake_80 Start: 54910, Stop: 54446, Start Num: 15

Candidate Starts for ShakeNBake_80:

(7, 55057), (10, 54946), (11, 54940), (12, 54934), (Start: 15 @54910 has 9 MA's), (23, 54763), (24, 54757),

Gene: Virizion_88 Start: 55426, Stop: 54959, Start Num: 15

Candidate Starts for Virizion_88:

(1, 55963), (2, 55939), (3, 55894), (4, 55672), (5, 55600), (10, 55462), (11, 55456), (12, 55450), (Start: 15 @55426 has 9 MA's), (19, 55297), (21, 55285), (24, 55273),

Gene: Virizion_73 Start: 48388, Stop: 47840, Start Num: 17

Candidate Starts for Virizion_73:

(10, 48427), (11, 48421), (13, 48403), (Start: 17 @48388 has 2 MA's), (18, 48283), (19, 48268), (20, 48262), (25, 48211),

Gene: Wentworth_79 Start: 54336, Stop: 53863, Start Num: 15

Candidate Starts for Wentworth_79:

(10, 54372), (11, 54366), (12, 54360), (Start: 15 @54336 has 9 MA's), (24, 54183),

Gene: Wilkos_82 Start: 54813, Stop: 54361, Start Num: 15

Candidate Starts for Wilkos_82:

(11, 54843), (Start: 15 @54813 has 9 MA's), (23, 54666), (24, 54660),

Gene: Yara_78 Start: 53975, Stop: 53490, Start Num: 15

Candidate Starts for Yara_78:

(Start: 15 @53975 has 9 MA's), (24, 53825), (27, 53498),